



# MURRAY ST. RACERS AT ARKANSAS ST. RED WOLVES

Joneboro, Ark.; First National Bank Arena

Tuesday, Nov. 27, 2018; 7 p.m.

TV/Web: None

Live Audio: WNBS 1340 AM

(PxP - Jeremy Rose)



1-4

## 2018-19 SCHEDULE

Date	Opponent	Time /Result
11/1	#LINDSEY WILSON	W 72-51
11/7	EVANSVILLE	W 81-53
11/10	OAKLAND CITY	W 113-55
11/13	at Butler	L 65-86
11/20	LIPSCOMB	W 97-61
11/27	at Arkansas St.	7 p.m.
12/1	ALABAMA A&M	5 p.m.
12/11	at Illinois	7 p.m.
12/13	BETHEL (TN)	6 p.m.
12/18	SOUTHERN ILL.	5 p.m.
12/21	at Kentucky	11 a.m.
12/28	at Tennessee	6 p.m.
1/3	*MOREHEAD ST.	5 p.m.
1/5	*EASTERN KY.	5 p.m.
1/10	*at UT Martin	5:30 p.m.
1/12	*at Southeast Mo.	2 p.m.
1/17	*at Eastern Ill.	5:15 p.m.
1/19	*at SIUE	5:15 p.m.
1/24	*BELMONT	2 p.m.
1/26	*TENNESSEE ST.	5 p.m.
1/31	*at Jacksonville St.	5 p.m.
2/2	*at Tennessee Tech	11:30 p.m.
2/7	*EASTERN ILLINOIS	5:30 p.m.
2/9	*SIUE	5 p.m.
2/14	*at Eastern Ky.	4 p.m.
2/16	*at Austin Peay	2 p.m.
2/21	*UT MARTIN	5 p.m.
2/23	*SOUTHEAST MO.	5 p.m.
2/28	*at Morehead St.	4:05 p.m.
3/1	*AUSTIN PEAY	5 PM
3/6-9	OVC Tournament	TBD

\* - OVC Contest

# - Exhibition

## 2018-19 OVC STANDINGS

Team	OVC	Overall
Morehead State	0-0	5-1
Belmont	0-0	4-1
Eastern Illinois	0-0	3-1
<b>Murray State</b>	<b>0-0</b>	<b>3-1</b>
SIUE	0-0	3-1
Tennessee Tech	0-0	4-2
UT Martin	0-0	4-2
Austin Peay	0-0	2-3
Jacksonville State	0-0	2-3
Southeast Missouri	0-0	2-4
Eastern Kentucky	0-0	0-5
Tennessee State	0-0	0-7

As of Nov. 26, 2018

## MURRAY STATE PROBABLE STARTERS

No.	Name	Pos.	GP/GS	FG%	3FG%	FT%	RPG	APG	PPG
3	DeAsia Outlaw	G	4/3	.375	1.00	.667	1.5	1.0	4.3
4	Lex Mayes	G	4/4	.471	.538	.800	3.8	1.8	12.5
5	Macey Turley	G	4/4	.471	.538	.800	3.5	6.8	14.3
14	Evelyn Adebayo	F	4/4	.532	.143	.765	10.3	1.3	16.0
32	Alexis Burpo	F/G	4/1	.556	.500	.667	2.5	1.5	6.5

### Key Reserves

00	Janika Griffith-Wallace	G	4/1	.378	.286	.800	5.3	3.5	10.5
20	Cekeya Mack	F	4/0	.625	.000	.875	3.3	0.5	6.8
31	Brianna Crane	F	4/3	.526	.000	.625	3.8	0.8	6.3

<b>Team</b>	<b>4</b>	<b>.489</b>	<b>.414</b>	<b>.800</b>	<b>43.3</b>	<b>19.8</b>	<b>89.0</b>
-------------	----------	-------------	-------------	-------------	-------------	-------------	-------------

## ARKANSAS STATE PROBABLE STARTERS

No.	Name	Pos.	GP/GS	FG%	3FG%	FT%	RPG	APG	PPG
1	Jireh Washington	G	5/4	.500	.000	.545	2.8	1.6	10.4
3	Morgan Wallace	G	5/5	.240	.000	.594	3.8	1.4	6.2
10	Akasha Westbrook	G	5/5	.261	.000	.769	6.6	1.6	8.8
11	Lycia Peevy	F	5/5	.364	.286	.667	3.2	0.6	5.6
35	Peyton Martin	F	5/5	.551	.000	.750	5.4	0.0	15.0

### Key Reserves

2	Starr Taylor	G	5/0	.632	.000	.333	1.8	2.4	5.0
23	Trinitee Jackson	F	5/0	.643	.000	.444	4.4	0.2	5.2
25	Kayla Williams	F	5/0	.500	.500	.857	0.8	1.0	6.6

<b>Team</b>	<b>5</b>	<b>.405</b>	<b>.188</b>	<b>.653</b>	<b>37.0</b>	<b>10.6</b>	<b>70.8</b>
-------------	----------	-------------	-------------	-------------	-------------	-------------	-------------

All stats are from 2018-19

## 2018 RECORD BREAKDOWN

	Record	Home	Away	Neutral	OT
<b>Overall</b>	<b>3-1</b>	<b>3-0</b>	<b>0-1</b>	<b>0-0</b>	<b>0-0</b>
<b>OVC</b>	<b>0-0</b>	<b>0-0</b>	<b>0-0</b>	<b>0-0</b>	<b>0-0</b>

## SEASON STREAKS

Overall: Won 1 Home: Won 3 Away: Lost 1 Neutral: --- OT: ---

## OVERALL STREAKS

Overall: Won 1 Home: Won 4 Away: Lost 2 Neutral: Lost 1 OT: Lost 1

## UPCOMING SCHEDULE

DATE	OPPONENT	SITE	TIME	WEB	RADIO
Dec. 1	Alabama A&M	Murray, Ky. (CFSB Center)	5 p.m.	ESPN+	1340 AM
Dec. 11	Illinois	Champaign, Ill. (State Farm Center)	7 p.m.	BTN+	104.5 FM
Dec. 13	Bethel (TN)	Murray, Ky. (CFSB Center)	6 p.m.	ESPN+	1340 AM
Dec. 18	Southern Ill.	Murray, Ky. (CFSB Center)	5 p.m.	ESPN+	1340 AM
Dec. 22	Kentucky	Lexington, Ky. (Memorial Coliseum)	11 a.m.	SECN+	1340 AM

## LAST TIME OUT

**vs. Lipscomb (W 97-61)**  
**Nov. 20 at CFSB Center**

MURRAY, Ky. - The Racers never trailed and led by as many as 37 in a convincing 97-61 win over Lipscomb last Tuesday night. The Racers came out of the gate with a smothering defense that held Lipscomb to just two field goals and eight total points in the first quarter. While Murray State continued to clamp down on defense on one end of the court, they lit up the scoreboard on the other throughout the game, shooting 50.7-percent from the floor and 53.8-percent from 3-point range. The Racers were also near perfect at the free throw line going 13-for-16 on the night. Macey Turley scored a game-high 21 points, while Lex Mayes followed with 16. Evelyn Adebayo was just one board from a double-double with 13 points and nine rebounds, while Cekeya Mack had the first double-digit point performance of her career with 10.

## TODAY'S OPPONENT:

**at Arkansas State Red Wolves**


**Nov. 27, 2018**

**7 p.m.**

**First National Bank Arena**

**SERIES HISTORY:** Tuesday will be the 17th all-time meeting between the Racers and the Red Wolves, but the first time since 2007. The two teams met 13 times from 1982 to 1991, but have met just three times since then. The series currently stands even at eight games apiece, however Arkansas State holds a 6-3 lead in games played in Jonesboro.

**SCOUTING REPORT:** Arkansas State is 1-4 on the year with a win over Memphis and a two-point loss to Oklahoma State and an overtime loss on the road at OVC member UT Martin. The Red Wolves currently average 70.8 points per game, while giving up 80.4. Peyton Martin currently leads ASU at 15.0 points per game, while Jireh Washington follows at 10.4. Akasha Westbrook leads all rebounders for the Red Wolves with 6.6 per game, to go along with 8.8 points. As a team, ASU is shooting 40.5 percent from the floor, despite shooting just 18.8-percent from three-point range. The Red Wolves have also struggled at the free so far this season, shooting just 65.3-percent.

MURRAY STATE VS. ARKANSAS STATE		RACERS - 8 WINS, RED WOLVES - 8 WINS	
	<b>Arkansas State Quick Facts</b> <b>Founded:</b> 1909 <b>Location:</b> Joesboro, Ark. <b>Colors:</b> Scarlet & Black <b>Enrollment:</b> 14,805	<b>Conference:</b> Sun Belt <b>Arena:</b> First National Bank Arena (10,563) <b>2017-18 Rec.:</b> 15-15 (10-8, 8th SBC) <b>Postseason:</b> L SBC 1st Rd.	<b>Head Coach:</b> Brian Boyer <b>Alma Mater:</b> Missouri Western, 1993 <b>Overall Record (season):</b> 322-273 (20th) <b>ASU Record (season):</b> Same
	<b>Last 3 vs. ASU:</b> 3/15/07 @ASU L 52-59 12/1/03 @ASU L 79-84 1/2/97 @ASU L 50-68	<b>Current Streaks vs. ASU:</b> <b>Overall:</b> Lost 4 <b>Home:</b> Won 1 <b>Away:</b> Lost 5	<b>All-Time vs. ASU:</b> <b>Home:</b> 5-1 <b>Away:</b> 3-6 <b>Neutral:</b> 0-1
		<b>MSU-ASU Series Misc.:</b> <b>First Meeting:</b> 12/4/82 @MSU W 76-62 <b>Largest MSU Win:</b> 2/2/84 @MSU W 78-58 <b>Largest ASU Win:</b> 12/14/91 @MEM L 50-80	

## 2018-19 MURRAY STATE ROSTER

No.	Player	Pos.	Ht.	Yr.	Hometown (Previous School)
0	Janika Griffith-Wallace	G	5-9	So.	Brampton, Ontario (Tech Academy at Sault Ste Marie)
1	Raegan Blackburn	G	5-8	Fr.	Greenville, Ky. (Muhlenberg County HS)
2	Sadie Hill	F/G	6-0	Fr.	Indianapolis, Ind. (Perry Meridian HS)
3	DeAsia Outlaw	G	5-11	Jr.	Henderson, Ky. (Wabash Valley CC)
4	Lex Mayes	G	5-7	Fr.	Murray, Ky. (Murray HS)
5	Macey Turley	G	5-6	Fr.	Murray, Ky. (Murray HS)
11	Paige Barrett	G/F	5-10	So.	Scottsburg, Ind. (Scottsburg HS)
14	Evelyn Adebayo	F	6-0	Jr.	London, England (Gardner-Webb)
20	Cekeya Mack	F	6-0	Jr.	Albany, Ga. (Albany Tech)
31	Brianna Crane	F	6-0	So.	Birmingham, Ala. (Ramsay HS)
32	Alexis Burpo	F/G	5-10	Fr.	Murray, Ky. (Murray HS)
33	Michaela Manley	G	5-10	Sr.	Benton, Ky. (Marshall County HS)
44	Macie Gibson	F	6-1	Fr.	Booneville, Ky. (Owsley County HS)

**Head Coach:** Rechelle Turner (Murray St., 1996), 2nd Season

**Assistant Coaches:** Amber Guffey (Murray St., 2009), 2nd Season;  
Jauwan Scaife (Ball St., 2012), 1st Season; Monica Evans, 2nd Season

### PRONUNCIATION GUIDE

JANIKA Griffith-Wallace ..... Juh-nee-kuh  
 Evelyn ADEBAYO ..... Add-uh-buy-oh  
 CEKEYA Mack ..... Suh-key-uh  
 RECHELLE Turner ..... Ruh-shell  
 JAUWAN Scaife ..... Juh-wahn

## 2018-19 ARKANSAS STATE ROSTER

No.	Name	Pos.	Ht.	Cl.	Hometown (Previous School)
0	Jada Ford	G	5-8	Jr.	Muskogee, Okla. (Muskogee HS)
1	Jireh Washington	G	5-9	Fr.	Memphis, Tenn. (Central HS)
2	Starr Taylor	G	5-6	Jr.	Jonesboro, Ark. (Jonesboro HS)
3	Morgan Wallace	G	5-10	So.	Little Rock, Ark. (Pulaski Academy)
5	Payton Tennison	G	5-11	Jr.	Valley Springs, Ark. (Valley Springs HS)
10	Akasha Westbrook	G	5-10	R-Sr.	Malvern, Ark. (Malvern HS)
11	Lycia Peevy	F	6-2	So.	Paris, Ark. (Paris HS)
14	Ashley Clayborn	G	5-9	Sr.	Hot Springs, Ark. (Tyler CC)
21	Shameka Tubbs	F	6-0	Jr.	Tuscaloosa, Ala. (Labette CC)
22	Maggie Mahan	G	5-9	So.	Center Ridge, Ark. (Nemo Vista HS)
23	Trinitee Jackson	F	6-3	Fr.	Hopkinsville, Ky. (Christian County HS)
24	Jordan Elder	G	5-7	Fr.	Joiner, Ark. (Nettleton HS)
25	Kayla Williams	F	6-1	R-So.	Memphis, Tenn. (Wichita St.)
35	Peyton Martin	F	5-11	So.	Pine Bluff, Ark. (Watson Chapel HS)
50	Madison Heckert	F	6-4	Jr.	Atwood, Tenn. (West Carroll HS)

**Head Coach:** Brian Boyer (Missouri Western, 1993), 20th Season

**Assistant Coach:** Autumn Rademacher (Detroit, 1997), 4th Season; Deidra Johnson (Oklahoma St., 2004) 4th Season;  
Todd Buchanan (Murray St., 1995), 1st Season

## HOW THEY RANK - TEAM VS. ASU

Statistic	Team	National Rank	Conference Rank	Value	National Leader	Value
Assist Turnover Ratio (349 ranked)	Murray St. Arkansas St.	16 307	1 11	1.34 0.56	Oregon	1.86
Assists (349 ranked)	Murray St. Arkansas St.	141 288	4 9	79 53	Drake	157
Assists Per Game (349 ranked)	Murray St. Arkansas St.	11 299	2 10	19.8 10.6	Iowa	25.0
Blocked Shots (348 ranked)	Murray St. Arkansas St.	195 317	6 10	15 7	Mississippi St.	59
Blocked Shots Per Game (348 ranked)	Murray St. Arkansas St.	113 319	5 10	3.8 1.4	Mississippi St.	9.8
Defensive Rebounds per Game (30 ranked)	Murray St.	30	1	30	Baylor	36
Fewest Fouls (345 ranked)	Murray St. Arkansas St.	5 184	1 10	54 100	Longwood	43
Fewest Turnovers (349 ranked)	Murray St. Arkansas St.	23 195	2 6	59 95	Longwood	29
Field-Goal Percentage (349 ranked)	Murray St. Arkansas St.	13 169	2 5	48.9 40.4	Baylor	56.1
Field-Goal Percentage Defense (349 ranked)	Murray St. Arkansas St.	191 325	7 12	39.7 46.1	Portland St.	25.2
Free Throw Attempts (349 ranked)	Arkansas St. Murray St.	1 285	1 8	170 70	Arkansas St.	170
Free Throws Made (349 ranked)	Arkansas St. Murray St.	4 243	1 6	111 56	North Carolina	118
Free-Throw Percentage (349 ranked)	Murray St. Arkansas St.	10 221	1 10	80.0 65.3	DePaul	86.9
Offensive Rebounds per Game (29 ranked)					Savannah St.	25
Personal Fouls Per Game (349 ranked)	Murray St. Arkansas St.	12 260	1 10	13.5 20.0	Oklahoma St.	11.3
Rebound Margin (349 ranked)	Murray St. Arkansas St.	28 272	1 9	11.3 -4.6	Baylor	21.5
Rebounds (348 ranked)	Arkansas St. Murray St.	236 268	6 9	185 173	Wisconsin	336
Rebounds Per Game (349 ranked)	Murray St. Arkansas St.	51 209	1 7	43.25 37.00	Savannah St.	52.50
Scoring Defense (349 ranked)	Murray St. Arkansas St.	160 335	6 12	63.8 80.4	Drexel	43.0
Scoring Margin (349 ranked)	Murray St. Arkansas St.	20 289	2 11	25.3 -9.6	Mississippi St.	53.0
Scoring Offense (349 ranked)	Murray St. Arkansas St.	8 107	2 3	89.0 70.8	Sacramento St.	98.0
Steals (349 ranked)	Murray St. Arkansas St.	114 177	7 4	51 43	Lamar University	112
Steals Per Game (349 ranked)	Murray St. Arkansas St.	26 137	4 5	12.8 8.6	Savannah St.	23.5
Three Pt FG Defense (349 ranked)	Murray St. Arkansas St.	61 293	4 10	25.7 35.2	Miami (OH)	11.8
Three-Point Field Goals Attempted (148 ranked)					FGCU	213
Three-Point Field Goals Made (349 ranked)	Murray St. Arkansas St.	128 341	5 12	36 13	FGCU	71
Three-Point Field Goals Per Game (349 ranked)	Murray St. Arkansas St.	31 344	2 12	9.0 2.6	Sacramento St.	13.7
Three-Point Field-Goal Percentage (349 ranked)	Murray St. Arkansas St.	11 345	1 12	41.4 18.8	Louisville	47.9
Turnover Margin (349 ranked)	Murray St. Arkansas St.	37 224	5 7	5.75 -1.20	Prairie View	15.00
Turnovers Forced (349 ranked)	Murray St. Arkansas St.	60 141	5 5	20.50 17.80	Savannah St.	33.00
Turnovers Per Game (349 ranked)	Murray St. Arkansas St.	81 263	4 8	14.8 19.0	South Dakota	10.2
Won-Lost Percentage (329 ranked)	Murray St. Arkansas St.	90 291	3 12	75.0 20.0	37 teams tied	100.0

## HOW THEY RANK - INDIVIDUAL VS. ASU

Statistic	Player	National Rank	Conference Rank	Value	National Leader	Value
Assist Turnover Ratio (247 ranked)	Macey Turley, Murray St.	69	3	2.45	La'Neique Nealey, Prairie View	11.00
Assists (131 ranked)	Macey Turley, Murray St.	83	2	27	Shania Johnson, Stony Brook	44
Assists Per Game (244 ranked)	Macey Turley, Murray St.	10	1	6.8	Aisia Robertson, New Mexico	10.0
Blocked Shots (149 ranked)					Teaira McCowan, Mississippi St.	24
Blocked Shots Per Game (225 ranked)	Cekeya Mack, Murray St.	168	5	1.25	Teaira McCowan, Mississippi St.	4.00
Defensive Rebounds per Game (28 ranked)	Evelyn Adebayo, Murray St.	25	1	8	Regan Magarity, Virginia Tech	11
Double Doubles (23 ranked)					Regan Magarity, Virginia Tech	6
					Kristine Anigwe, California	6
					Brandy Thomas, LIU Brooklyn	6
Field Goal Attempts (149 ranked)					Shayna Mehta, Brown	134
Field Goals Made (127 ranked)					Shayna Mehta, Brown	60
Field-Goal Percentage (250 ranked)	Peyton Martin, Arkansas St.	72	3	55.1	Megan Gustafson, Iowa	76.8
	Evelyn Adebayo, Murray St.	92	3	53.2		
	Macey Turley, Murray St.	122	4	50.0		
Final Points (197 ranked)					Shayna Mehta, Brown	164
Free Throw Attempts (145 ranked)	Morgan Wallace, Arkansas St.	80	3	32	Nicole Cardano-Hillary, George Mason	57
	Peyton Martin, Arkansas St.	145	4	28		
Free Throws Made (150 ranked)	Peyton Martin, Arkansas St.	122	4	21	Cierra Dillard, Buffalo	44
	Akasha Westbrook, Arkansas St.	150	6	20		
Free-Throw Percentage (237 ranked)	Akasha Westbrook, Arkansas St.	208	8	76.9	10 players tied	100.0
	Evelyn Adebayo, Murray St.	217	7	76.5		
	Peyton Martin, Arkansas St.	237	9	75.0		
Minutes Played (148 ranked)					Shayna Mehta, Brown	287:10
Minutes Played Per Game (150 ranked)					Kiana Patterson, Central Conn. St.	46.78
Offensive Rebounds per Game (30 ranked)					Arielle Gonzalez-Varner, Austin Peay	7
Points Per Game (249 ranked)	Evelyn Adebayo, Murray St.	156	6	16.0	Cierra Dillard, Buffalo	26.6
	Peyton Martin, Arkansas St.	213	6	15.0	Aari McDonald, Arizona	26.6
Rebounds (150 ranked)					Regan Magarity, Virginia Tech	100
Rebounds Per Game (244 ranked)	Evelyn Adebayo, Murray St.	41	3	10.3	Ty'Reona Doucet, Louisiana	14.6
Steals (143 ranked)	Akasha Westbrook, Arkansas St.	143	5	12	Chastadie Barrs, Lamar University	33
Steals Per Game (192 ranked)	Akasha Westbrook, Arkansas St.	118	5	2.40	Jacquece Alston, Savannah St.	5.75
	Macey Turley, Murray St.	152	9	2.25		
	Janika Griffith-Wallace, Murray St.	192	11	2.00		
	Lex Mayes, Murray St.	192	11	2.00		
Three-Point Field Goals Attempted (143 ranked)					Jasmyne Harris, Houston	71
Three-Point Field Goals Made (140 ranked)	Lex Mayes, Murray St.	108	3	14	Lauren Loven, Denver	30
Three-Point Field Goals Per Game (211 ranked)	Lex Mayes, Murray St.	20	2	3.50	Lauren Loven, Denver	5.00
Three-Point Field-Goal Percentage (250 ranked)	Lex Mayes, Murray St.	22	1	53.8	Shalexus Aaron, Southern California	70.0
Triple Doubles (2 ranked)					Sabrina Ionescu, Oregon	2

## THE INSIDE TRACK

### GAME 5 NOTES - ASU

---

#### A WIN TUESDAY WOULD...

Give the Racers their first win over a program that sponsors FBS football since 2012 when they defeated Ball State at home, 63-53.

#### RANK AND FILE

Murray State currently ranks in the top 10 nationally in three separate categories. They are 10th in free throw percentage at 80.0, eighth in scoring offense at 89.0 and fifth in fewest fouls at 54.

#### EIGHT IS GREAT

In three of their four games this season, the Racers have limited their opponents to just eight points in the opening stanza. They did so against Evansville, Oakland City and Lipscomb and went 3-0 in those contests.

#### THREE FOR ALL

Macey Turley kept Murray State's streak of winning a weekly award alive Tuesday when she was named as the OVC Freshman of the Week for the second time this season.

#### A FRIENDLY FACE

Arkansas State assistant Todd Buchanan is no stranger to the Racers, as he is a 1995 graduate of Murray State. In addition to his time as a student at Murray State, Buchanan served as an assistant for the Racer women from 1992-1995 and also coached at three local high schools; Lyon County, Calloway County and Murray.

#### OK, WHAT'S NEXT?

The Racers return home Saturday to take on regional foe Alabama A&M at 5 p.m.

### GAME 4 NOTES - LIP

---

#### A WIN TUESDAY WOULD...

Give the Racers their first three-game win-streak at home since 2016-17 when they posted wins over MacMurray, Tennessee State and Eastern Illinois (Dec. 12-Jan. 11).

#### BACK-TO-BACK

Although she did come up just short of her third straight double-double against Butler, Evelyn Adebayo was named as the OVC Newcomer of the Week, giving the Racers a weekly winner in each of the first two weeks of the season. Macey Turley was the first winner for Murray State, taking home freshman honors last week.

#### TURNOVER TROUBLE

The Racers committed a season-high 23 turnovers against Butler, leading directly to 27 points for the Bulldogs. The game also marked the first-time this year that MSU had finished a game with more turnovers than assists (11).

### GAME 3 NOTES - BUT

---

#### DOUBLE YOUR FUN

For the second time in as many games, Evelyn Adebayo notched a double-double. Through two games this season she is averaging 18.0 points per game and 11.5 rebounds.

#### BIG NUMBERS

The Racers scored 113 points against Oakland City Saturday for the fourth most points in school single-game history. In addition, the Racers' 40-made field goals is the 11th most in program history.

#### SPREADING THE LOVE

All 12 eligible players played for the Racers with 11 of them tallying points. Of the 11 players that scored in the game, seven reached double digits.

### GAME 2 NOTES - OAK

---

#### OPENING STATEMENT

MSU's win Wednesday was the first in a season opener against a Division I team since beating the Purple Aces to start the 2011-12 season, as well as the largest margin of victory against any Division I opponents since a 32 point win over Alabama A&M in 2016-17.

#### HISTORIC DEBUT

With game-highs of 18 points and 10 rebounds, Evelyn Adebayo became the first known Racer to debut with a double-double (single-game records dating back to 1997-98) Wednesday versus Evansville.

#### QUICK TURNAROUND

In Wednesday's opener, the Racers addressed two areas of concerns from the exhibition Thursday night, three-point and free throw shooting. The Racers were just 1-for-13 (7.7%) from three and 19-for-35 (54.3%) in their lone exhibition. However, on Wednesday, MSU was 7-for-10 (70.0%) from the stripe and 10-for-20 (50.0%) from beyond the arc.

### GAME 1 NOTES - UE

---

#### LIFTING THE LID

Murray State opens its 52nd season of women's basketball Wednesday and is 22-30 all-time in season openers and 26-23 in home openers. The Racers are 4-4 all-time against UE in season openers and 3-3 against the Purple Aces in home openers.

#### SHAKING THE DUST OFF

The Racers won their only exhibition of the year last Thursday, 72-51 over Lindsey Wilson. After sitting out last season due to NCAA transfer rules, Evelyn Adebayo easily got back in the groove and led MSU with 21 points, while Janika Griffith-Wallace posted a double-double with 13 points and 11 rebounds.

#### NEXT ONE UP

The Racers return just 20.4 percent of their scoring from last year with the most notable loss being the 2017-18 OVC Player of the Year, Ke'Shunnan James. Brianna Crane will lead all returners this season after averaging 7.2 points and 5.7 rebounds per game last season.

# HEAD COACH RECEHELLE TURNER

2ND SEASON AT MSU/2ND SEASON OVERALL

## TURNER'S CAREER YEAR-BY-YEAR COACHING RECORD

Year	Team	OVERALL			OVC			POSTSEASON		
		W	L	Pct.	W	L	Pct.	W	L	Pct.
2017-18	Murray St.	11	19	.367	7	11	.389	0	1	.000
2018-19	Murray St.	3	1	.750	---	---	.000	-	-	.000
<b>TOTAL</b>		<b>14</b>	<b>20</b>	<b>.411</b>	<b>7</b>	<b>11</b>	<b>.389</b>	<b>0</b>	<b>1</b>	<b>.000</b>
<b>OT</b>		<b>0</b>	<b>1</b>	<b>.000</b>	<b>0</b>	<b>1</b>	<b>.000</b>	<b>0</b>	<b>1</b>	<b>.000</b>

## TURNER VS. THE COMPETITION

OPPONENT	RECORD	OPPONENT	RECORD
<b>Austin Peay*</b>	<b>1-1</b>	<b>Lipscomb</b>	<b>1-1</b>
Alabama	1-0	Louisville	0-1
<b>Alabama A&amp;M</b>	<b>0-1</b>	Mississippi Valley St.	1-0
<b>Arkansas St.</b>	<b>0-0</b>	<b>Morehead St.*</b>	<b>0-2</b>
<b>Belmont*</b>	<b>0-2</b>	UNC Greensboro	1-0
<b>Bethel (TN)</b>	<b>1-0</b>	<b>Oakland City</b>	<b>1-0</b>
<b>Butler</b>	<b>0-2</b>	Northern Kentucky	1-0
<b>Evansville</b>	<b>1-1</b>	<b>Southern Illinois</b>	<b>0-0</b>
ETSU	0-1	<b>SIUE*</b>	<b>0-2</b>
<b>Eastern Illinois*</b>	<b>2-0</b>	<b>Southeast Missouri*</b>	<b>0-2</b>
<b>Eastern Kentucky*</b>	<b>1-0</b>	<b>Tennessee</b>	<b>0-0</b>
<b>Illinois</b>	<b>0-0</b>	<b>Tennessee State*</b>	<b>1-0</b>
<b>Jacksonville State*</b>	<b>0-2</b>	<b>Tennessee Tech*</b>	<b>2-0</b>
<b>Kentucky</b>	<b>0-0</b>	<b>UT Martin*</b>	<b>0-2</b>

2018 Opponents Listed In BOLD

\*Indicates OVC Opponent



## THE RACERS ARE....

3-1 ...Overall	1-1 ...Bench outscored by Opp. bench	3-1 ...in November
...vs. OVC	...Tied, bench scoring	...in December
3-1 ...vs. Non-Conference	3-0 ...Outrebound Opponent	...in January
	0-1 ...Outrebounded by Opponent	...in February
	...Tied, rebounds	...in March
	3-0 ...More FTM than Opponent	
3-0 ...Leading at Half	...Less FTM than Opponent	...on Mondays
0-1 ...Trailing at Half	0-1 ...Tied, FTM	1-1 ...on Tuesdays
...Tied at Half	3-1 ...More 3FGM than Opponent	1-0 ...on Wednesdays
...In Overtime	...Less 3FGM than Opponent	...on Thursdays
3-0 ...Outshoot Opponent (%)	...Tied, 3FGM	...on Fridays
0-1 ...Outshot by Opponent (%)	0-1 ...More turnovers than Opponent	1-0 ...on Saturdays
...Tied opponent, shooting (%)	3-0 ...Less turnovers than Opponent	...on Sundays
3-1 ...Shoot .400 or better	...Tied, turnovers	
...Shoot under .400	...Score ≤ 60	...in the Afternoon (Before 4 p.m.)
0-1 ...Opponent shoot .400 or better	3-0 ...Score 75+	3-1 ...in the Evenings (4 p.m. or After)
3-0 ...Opponent shoot under .400	2-0 ...Opponents Score ≤ 60	
2-0 ...Bench outscores Opp. bench	0-1 ...Opponents Score 75+	

## 2018 SCORE BY QUARTERS

	1st Qtr.	2nd Qtr.	3rd Qtr.	4th Qtr.	OT	Total
<b>Murray St.</b>	74	88	97	97	0	356
<b>Avg.</b>	18.5	22.0	24.3	24.3	0.0	89.0
<b>Opponents</b>	48	73	80	54	0	255
<b>Avg.</b>	12.0	18.3	20.0	13.5	0.0	63.8

## BENCH SCORING

RACERS	OPPONENTS
<b>Season Avg.:</b> 35.0	<b>Season Avg.:</b> 28.3
<b>Team High:</b> 60 (OCU, 11/10)	<b>Team High:</b> 34 (OCU, 11/10)
<b>Team Low:</b> 16 (BUT, 11/13)	<b>Team Low:</b> 22 (BUT, 11/13)
<b>Individual High:</b>	<b>Individual High:</b>
14 - Burpo (OCU, 11/10)	17 - Hammaker (LIP, 11/20)

## 2018 WON-LOST MARGINS

Margin	1	2	3	4	5	6	7	8	9	10	11	12	13	14	15
<b>Won By</b>															
<b>Lost By</b>															
Margin	16	17	18	19	20	21	22	23	24	25	26	27	28	29	30+
<b>Won By</b>													1		2
<b>Lost By</b>						1									



## 2018-19 TEAM HIGHS & LOWS - RACERS

CATEGORY	HIGH	LOW
Total Points	113 - OCU, 11/10	65 - BUT, 11/13
Points In A Quarter	33 [3rd, 4th] - OCU, 11/10	14 [4th] - BUT, 11/13
Overtime Points	---	---
FG Made	40 - OCU, 11/10	25 - BUT, 11/13
FG Attempted	79 - OCU, 11/10	55 - BUT, 11/13
FG%	50.7 - LIP, 11/20	45.5 - BUT, 11/13
3PT FG Made	14 - LIP, 11/20	5 - OCU, 11/10
3PT FG Attempted	26 - LIP, 11/20	19 - OCU, 11/10
3PT FG%	58.3 - LIP, 11/20	26.3 - OCU, 11/10
FT Made	28 - OCU, 11/10	7 - UE, 11/7
FT Attempted	34 - OCU, 11/10	10 - UE, 11/7; BUT, 11/13
FT%	82.4 - OCU, 11/10	70.0 - UE, 11/7
Rebounds	57 - OCU, 11/10	29 - BUT, 11/13
Offensive Rebounds	20 - OCU, 11/10	10 - BUT, 11/13; LIP, 11/20
Defensive Rebounds	37 - OCU, 11/10	19 - BUT, 11/13
Assists	23 - OCU, 11/10	9 - LIP, 11/20
Steals	24 - OCU, 11/10	4 - UE, 11/7
Turnovers	23 - BUT, 11/13	9 - LIP, 11/20
Blocked Shots	5 - LIP, 11/20	3 - OCU, 11/10; BUT, 11/13
Assist/Turnover Ratio	2.5 - LIP, 11/20	0.5 - BUT, 11/13
Fouls	16 - LIP, 11/20	12 - UE, 11/7; OCU, 11/10

## 2018-19 TEAM HIGHS & LOWS - OPPONENTS

CATEGORY	HIGH	LOW
Total Points	86 - BUT, 11/13	53 - UE, 11/7
Points In A Quarter	25 - [2nd] - BUT, 11/13	8 - 3 Times
Overtime Points	---	---
FG Made	36 - BUT, 11/13	19 - OCU, 11/10
FG Attempted	68 - BUT, 11/13	59 - OCU, 11/10
FG%	52.9 - BUT, 11/13	32.2 - OCU, 11/10
3PT FG Made	6 - BUT, 11/1; LIP, 11/20	3 - UE, 11/7; OCU, 11/10
3PT FG Attempted	22 - BUT, 11/13	15 - UE, 11/7; OCU, 11/10
3PT FG%	33.3 - LIP, 11/20	20.0 - UE, 11/7; OCU, 11/10
FT Made	14 - OCU, 11/10	6 - UE, 11/7
FT Attempted	18 - OCU, 11/10	8 - UE, 11/7
FT%	81.8 - LIP, 11/20	75.0 - UE, 11/7
Rebounds	35 - LIP, 11/20	27 - OCU, 11/10
Offensive Rebounds	14 - BUT, 11/13	6 - OCU, 11/10
Defensive Rebounds	25 - UE, 11/7; LIP, 11/20	20 - BUT, 11/13
Assists	16 - BUT, 11/13	6 - UE, 11/7
Steals	17 - BUT, 11/13	4 - LIP, 11/20
Turnovers	32 - OCU, 11/10	13 - UE, 11/7
Blocked Shots	5 - UE, 11/7	0 - LIP, 11/20
Assist/Turnover Ratio	1.1 - BUT, 11/13	0.3 - OCU, 11/10; LIP, 11/20
Fouls	21 - OCU, 11/10	12 - BUT, 11/13

## 2018-19 INDIVIDUAL GAME HIGHS

CATEGORY	MURRAY STATE	OPPONENT
<b>Total Points</b>	21 - Turley (LIP, 11/20)	24 - Jennings (BUT, 11/13)
<b>Points In A Quarter</b>	9 [4th] - Manley (LIP, 11/20)	11 [1st] - Jennings (BUT, 11/13)
<b>Overtime Points</b>	---	---
<b>FG Made</b>	9 - Adebayo (UE, 11/7)	10- Jennings (BUT, 11/13)
<b>FG Attempted</b>	20 - Adebayo (UE, 11/7)	13- Jennings (BUT, 11/13); Hammaker (LIP, 11/20)
<b>3PT FG Made</b>	5 - Mayes (BUT, 11/13)	3 - Jennings (BUT, 11/13); Kmec (LIP, 11/20)
<b>3PT FG Attempted</b>	7 - Turley (BUT, 11/13); Mayes (LIP, 11/20)	8 - Kmec (LIP, 11/20)
<b>FT Made</b>	6 - Barrett (OCU, 11/10)	4 - Pittman (OCU, 11/10)
<b>FT Attempted</b>	7 - Adebayo (OCU, 11/10)	7 - Pittman (OCU, 11/10)
<b>Rebounds</b>	13 - Adebayo (OCU, 11/10)	10 - Schickel (BUT, 11/13)
<b>Offensive Rebounds</b>	4 - Adebayo (OCU, 11/10)	4 - Schickel (BUT, 11/13)
<b>Defensive rebounds</b>	9 - Adebayo (OCU, 11/10)	7 - Morrow (LIP, 11/20)
<b>Assists</b>	9 - Turley (UE, 11/7)	5- Weaver (BUT, 11/13)
<b>Steals</b>	4 - Mack (OCU, 11/10)	5 - Weaver, Jennings (BUT, 11/13)
<b>Turnovers</b>	6 - Griffith-Wallace (OCU, 11/10)	10 - Sanford (OCU, 11/10)
<b>Blocks</b>	2 - Mack (BUT, 11/13); Burpo (LIP, 11/20)	4 - Coffman (UE, 11/7)
<b>Minutes</b>	35 - Adebayo (BUT, 11/13)	36 - Newman (UE, 11/7)

## 2018-19 GAME-BY-GAME INDIVIDUAL HIGHS

Game	Points	Rebounds	Assists	Steals	Blocks
11/7 - Evansville	18 - Adebayo	10 - Adebayo	9 - Turley	3 - Turley	1 - 4 Players
11/10 - Oakland City	18 - Adebayo	13 - Adebayo	7 - Turley	4 - Mack	1 - 2 Players
11/13 - at Butler	15 - Adebayo, Mayes	9 - Adebayo	5 - Turley	3 - Outlaw, Turley	2 - Mack
11/20 - Lipscomb	21 - Turley	9 - Adebayo	6 - Turley	3 - Griffith-Wallace	2 - Burpo
11/27 - at Arkansas St.					
12/1 - Alabama A&M					
12/11 - at Illinois					
12/13 - Bethel (TN)					
12//18 - Southern Ill.					
12/21 - at Kentucky					
12/28 - at Tennessee					
1/3 - Morehead St.					
1/5 - Eastern Ky.					
1/10 - at UT Martin					
1/12 - at Southeast Mo.					
1/17 - at Eastern Ill.					
1/19 - at SIUE					
1/24 - Belmont					
1/26 - Tennessee St.					
1/31 - at Jacksonville State					
2/2 -at Tennessee Tech					
2/7 - Eastern Ill.					
2/9 - SIUE					
2/14 - at Eastern Ky.					
2/116 - at Austin Peay					
2/21 - UT Martin					
2/23 - Southeast Mo.					
2/28 - at Morehead St.					
3/2 - Austin Peay					

## 2018-19 STARTERS BY GAME

Game	1 - G	2 - G	3 - G/F	4 - F	5 - C
11/7 - Evansville	Turley	Mayes	Outlaw	Crane	Adebayo
11/10 - Oakland City	Turley	Mayes	Griffith-Wallace	Crane	Adebayo
11/13 - at Butler	Turley	Mayes	Outlaw	Crane	Adebayo
11/20 - Lipscomb	Turley	Mayes	Outlaw	Burpo	Adebayo
11/27 - at Arkansas St.					
12/1 - Alabama A&M					
12/11 - at Illinois					
12/13 - Bethel (TN)					
12/18 - Southern Ill.					
12/21 - at Kentucky					
12/28 - at Tennessee					
1/3 - Morehead St.					
1/5 - Eastern Ky.					
1/10 - at UT Martin					
1/12 - at Southeast Mo.					
1/17 - at Eastern Ill.					
1/19 - at SIUE					
1/24 - Belmont					
1/26 - Tennessee St.					
1/31 - at Jacksonville State					
2/2 - at Tennessee Tech					
2/7 - Eastern Ill.					
2/9 - SIUE					
2/14 - at Eastern Ky.					
2/116 - at Austin Peay					
2/21 - UT Martin					
2/23 - Southeast Mo.					
2/28 - at Morehead St.					
3/2 - Austin Peay					

## 2018-19 DOUBLE-DOUBLES

Player	Game	Category 1	Category 2
Evelyn Adebayo	Evansville	18 Points	10 Rebounds
Evelyn Adebayo	Oakland City	18 Points	13 Rebounds

## 2018-19 HONORS

<b>Evelyn Adebayo</b> OVC Newcomer of the Week - 11/20	<b>Macey Turley</b> OVC Freshman of the Week - 11/13 OVC Freshman of the Week - 11/27	

# 2018-19 STATISTICS

RECORD:	OVERALL	HOME	AWAY	NEUTRAL
ALL GAMES	3-1	3-0	0-1	0-0
CONFERENCE	0-0	0-0	0-0	0-0
NON-CONFERENCE	3-1	3-0	0-1	0-0

#	Player	gp-gs	min	avg	Total	3-Point	F-Throw	Rebounds	pf	dq	a	to	blk	stl	pts	avg
					fg-fga	fg%	3fg-fga	3fg%	ft-fa	ft%	off	def	tot	avg		
14	Adebayo, Evelyn	4-4	104	26.0	25-47	.532	1-7	.143	13-17	.765	10	31	41	10.3	5	0
05	Turley, Macey	4-4	118	29.5	22-44	.500	7-20	.350	6-6	1.000	5	9	14	3.5	8	0
04	Mayes, Lex	4-4	110	27.5	16-34	.471	14-26	.538	4-5	.800	5	10	15	3.8	7	0
00	Griffith-Wallace, J.	4-1	93	23.3	17-45	.378	4-14	.286	4-5	.800	6	15	21	5.3	5	0
20	Mack, Cekeya	4-0	53	13.3	10-16	.625	0-0	.000	7-8	.875	3	10	13	3.3	4	0
32	Burpo, Alexis	4-1	54	13.5	10-18	.556	4-8	.500	2-3	.667	4	6	10	2.5	3	0
44	Gibson, Macie	2-0	25	12.5	5-6	.833	0-0	.000	3-4	.750	3	4	7	3.5	2	0
31	Crane, Brianna	4-3	78	19.5	10-19	.526	0-0	.000	5-8	.625	3	12	15	3.8	3	0
33	Manley, Michaela	4-0	41	10.3	6-13	.462	4-8	.500	2-2	1.000	0	5	5	1.3	2	0
03	Outlaw, DeAsia	4-3	80	20.0	6-16	.375	1-1	1.000	4-6	.667	3	3	6	1.5	8	0
11	Barrett, Paige	4-0	22	5.5	3-7	.429	0-1	.000	6-6	1.000	5	2	7	1.8	4	0
02	Hill, Sadie	4-0	20	5.0	2-4	.500	1-2	.500	0-0	.000	0	3	3	0.8	3	0
01	Blackburn, Raegan	1-0	2	2.0	0-1	.000	0-0	.000	0-0	.000	0	0	0	0.0	0	0
Team											5	11	16			1
Total.....		4	800		132-270	.489	36-87	.414	56-70	.800	52	121	173	43.2	54	0
Opponents.....		4	800		100-252	.397	18-70	.257	37-47	.787	37	91	128	32.0	68	-

TEAM STATISTICS	MUR	OPP	Date	Opponent	Score	Att.
SCORING	356	255	11/07/18	EVANSVILLE	w 81-53	585
Points per game	89.0	63.8	11/10/18	OAKLAND CITY	w 113-55	938
Scoring margin	+25.3	-	11/13/18	at Butler	L 65-86	484
FIELD GOALS-ATT	132-270	100-252	11/20/18	LIPSCOMB	w 97-61	448
Field goal pct	.489	.397	* - OVC game			
3 POINT FG-ATT	36-87	18-70				
3-point FG pct	.414	.257				
3-pt FG made per game	9.0	4.5				
FREE THROWS-ATT	56-70	37-47				
Free throw pct	.800	.787				
F-Throws made per game	14.0	9.3				
REBOUNDS	173	128				
Rebounds per game	43.2	32.0				
Rebounding margin	+11.3	-				
ASSISTS	79	41				
Assists per game	19.8	10.3				
TURNOVERS	59	82				
Turnovers per game	14.8	20.5				
Turnover margin	+5.8	-				
Assist/turnover ratio	1.3	0.5				
STEALS	51	35				
Steals per game	12.8	8.8				
BLOCKS	15	8				
Blocks per game	3.8	2.0				
ATTENDANCE	1971	484				
Home games-Avg/Game	3-657	1-484				
Neutral site-Avg/Game	-	0-0				

Score by Periods	1st	2nd	3rd	4th	Totals
Murray St.	74	88	97	97	356
Opponents	48	73	80	54	255



**JANIKA  
GRIFFITH-WALLACE**  
G ■ 5-9 ■ So.  
Brampton, Ontario



**REAGAN  
BLACKBURN**  
G ■ 5-8 ■ Fr.  
Greenville, Ky.



**SADIE  
HILL**  
G/F ■ 6-0 ■ Fr.  
Indianapolis, Ind



**DEASIA  
OUTLAW**  
G ■ 5-11 ■ Jr.  
Henderson, Ky.



**LEX  
MAYES**  
G ■ 5-7 ■ Fr.  
Murray, Ky.



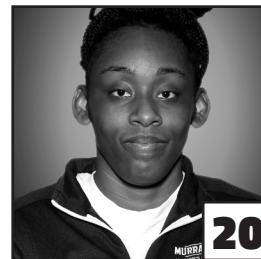
**MACEY  
TURLEY**  
G ■ 5-6 ■ Fr.  
Murray, Ky.



**PAIGE  
BARRETT**  
G/F ■ 5-10 ■ So.  
Scottsburg, Ind.



**EVELYN  
ADEBAYO**  
F ■ 6-0 ■ R-Jr.  
London, England



**CEKEYA  
MACK**  
F ■ 6-1 ■ Jr.  
Murray, Ky.



**BRIANNA  
CRANE**  
F ■ 6-0 ■ So.  
Birmingham, Ala.



**ALEXIS  
BURPO**  
F/G ■ 5-10 ■ Fr.  
Murray, Ky.



**MICHAELA  
MANLEY**  
G ■ 5-10 ■ Sr.  
Benton, Ky.



**MACIE  
GIBSON**  
F ■ 6-1 ■ Fr.  
Booneville, Ky.



**RECHELLE  
TURNER**  
Head Coach  
2nd Season



**MONICA  
EVANS**  
Assistant Coach  
2nd Season



**AMBER  
GUFFEY**  
Assistant Coach  
2nd Season



**JAUWAN  
SCAIFE**  
Assistant Coach  
1st Season