



6-9 (2-2)

MURRAY ST. RACERS AT EASTERN ILL./SIUE

Charleston, Ill./Edwardsville, Ill.; Lantz Arena/Valdalabene Center

Thursday & Saturday, Jan 17 & 19, 2019; 12 & 2 p.m.

TV/Web: ESPN+

Live Audio: WNBS 1340 AM

(PxP - Jeremy Rose)



7-8 (1-3)



7-8 (2-2)

2018-19 SCHEDULE

Date	Opponent	Time /Result
11/1	#LINDSEY WILSON	W 72-51
11/7	EVANSVILLE	W 81-53
11/10	OAKLAND CITY	W 113-55
11/13	at Butler	L 65-86
11/20	LIPSCOMB	W 97-61
11/27	at Arkansas St.	L 63-74
12/1	ALABAMA A&M	L 53-59
12/11	at Illinois	L 52-84
12/13	BETHEL (TN)	W 86-50
12/18	SOUTHERN ILL.	L 59-65
12/21	at #18 Kentucky	L 49-88
12/28	at #10 Tennessee	L 77-98
1/3	*MOREHEAD ST.	L 61-83
1/5	*EASTERN KY.	W 81-63
1/10	*at UT Martin	L 67-75
1/12	*at Southeast Mo.	W 64-59
1/17	*at Eastern Ill.	12 p.m.
1/19	*at SIUE	2 p.m.
1/24	*BELMONT	2 p.m.
1/26	*TENNESSEE ST.	5 p.m.
1/31	*at Jacksonville St.	5 p.m.
2/2	*at Tennessee Tech	11:30 p.m.
2/7	*EASTERN ILLINOIS	5:30 p.m.
2/9	*SIUE	5 p.m.
2/14	*at Eastern Ky.	4 p.m.
2/16	*at Austin Peay	2 p.m.
2/21	*UT MARIN	5 p.m.
2/23	*SOUTHEAST MO.	5 p.m.
2/28	*at Morehead St.	4:05 p.m.
3/1	*AUSTIN PEAY	5 p.m.
3/6-9	OVC Tournament	TBD

* - OVC Contest

- Exhibition

2018-19 OVC STANDINGS

Team	OVC	Overall
Tennessee Tech	4-0	12-3
UT Martin	3-1	11-4
Belmont	3-1	10-5
Austin Peay	2-2	7-8
Jacksonville State	2-2	8-7
Morehead State	2-2	11-6
Murray State	2-2	6-9
SIUE	2-2	7-8
Southeast Missouri	2-2	7-8
Eastern Illinois	1-3	7-8
Tennessee State	1-3	1-15
Eastern Kentucky	0-4	2-13

As of Jan 14, 2019

MURRAY STATE PROBABLE STARTERS

No.	Name	Pos.	GP/GS	FG%	3FG%	FT%	RPG	APG	PPG
4	Lex Mayes	G	15/15	.322	.341	.793	3.1	1.1	8.3
5	Macey Turley	G	15/15	.419	.298	.860	3.1	5.0	12.5
14	Evelyn Adebayo	F	15/15	.480	.412	.796	10.1	1.2	18.7
31	Brianna Crane	F	15/9	.460	.000	.714	5.8	0.7	7.3
32	Alexis Burpo	F/G	15/5	.456	.348	.381	4.2	1.7	5.2

Key Reserves

00	Janika Griffith-Wallace	G	14/9	.321	.265	.714	3.1	2.3	8.1
3	DeAsia Outlaw	G	9/4	.414	.333	.667	1.1	0.6	3.2
20	Cekeya Mack	F	15/3	.577	.000	.640	3.6	0.3	5.1
Team			15	.421	.327	.749	39.7	13.5	71.2

EASTERN ILLINOIS PROBABLE STARTERS

No.	Name	Pos.	GP/GS	FG%	3FG%	FT%	RPG	APG	PPG
5	Grace Lennox	G	15/15	.400	.244	.773	3.8	3.7	8.5
11	Karle Pace	G	14/13	.452	.373	.723	2.6	1.9	14.7
14	Grace McRae	F	14/14	.447	.357	.222	6.8	1.2	6.8
15	Taylor Steele	G	15/15	.367	.351	.733	2.5	1.6	10.9
32	Jennifer Nehls	F	15/15	.342	.083	.727	6.3	1.7	4.6
Team			15	.427	.341	.653	37.7	14.8	70.1

SIUE PROBABLE STARTERS

No.	Name	Pos.	GP/GS	FG%	3FG%	FT%	RPG	APG	PPG
1	Christen King	G	15/13	.407	.167	.549	4.4	1.1	8.7
5	Jay'nee Alston	G	14/12	.308	.282	.625	3.4	1.8	6.6
14	Micah Jones	F	15/8	.377	.000	.576	4.9	1.5	6.6
23	Allie Troeckler	G/F	15/15	.464	.000	.804	6.3	1.7	9.4
34	Sydney Bauman	C	15/13	.368	.000	.565	8.2	1.1	7.4
Team			15	.362	.264	.630	41.5	12.1	58.7

2018-19 RECORD BREAKDOWN

	Record	Home	Away	Neutral	OT
Overall	6-9	5-3	1-6	0-0	0-0
OVC	2-2	1-1	1-1	0-0	0-0

SEASON STREAKS

Overall: Won 1 Home: Won 1 Away: Won 1 Neutral: --- OT: ---

UPCOMING SCHEDULE

DATE	OPPONENT	SITE	TIME	WEB	RADIO
Jan. 24	Belmont	Murray, Ky. (CFSB Center)	5 p.m.	ESPN+	1340 AM
Jan. 26	Tennessee St.	Murray, Ky. (CFSB Center)	5 p.m.	ESPN+	1340 AM
Jan. 31	Jacksonville St.	Jacksonville, Ala. (Pete Mathews Coliseum)	11:30 a.m.	ESPN+	1340 AM
Feb. 2	Tennessee Tech	Cookeville, Tenn. (Eblen Center)	5:30 p.m.	ESPN+	1340 AM
Feb. 7	Eastern Ill.	Murray, Ky. (CFSB Center)	5 p.m.	ESPN+	104.5 FM

LAST TIME OUT

vs. UT Martin (L 67-75)/Southeast Mo. (W 64-59)

Jan. 10 & 12 at CFSB Center

MARTIN, Tenn. & CAPE GIRARDEAU, Mo. - The Racers outscored UT Martin in the third quarter of Thursday to trim the Skyhawk lead to three. However, the Racers could not carry their momentum over to the final stanza and fell to UT Martin, 75-67. A big part of the third quarter surge was Evelyn Adebayo, who despite being held to just four points in the first half score a Racers season-high 13 in the third. Adebayo finished the game with her second consecutive and seventh double of the season of 25 points and 12 rebounds to lead all players. She was also 11-for-16 at the free throw line, which is a team season-high in both free throws made and free throws attempted. On Saturday, the Racers walked out of the Show-Me Center with a win for the first time since 2011, as they picked up a 64-59 win over Southeast Missouri. The Redhawks cut the lead to just one with over a minute to play, but Macey Turley went 4-for-4 from the line in the final minute to help the Racers escape with the win. Murray State beat the Redhawks in nearly every facet of the game including shooting from the floor, 3-point range and the free throw line, rebounding and turnovers. The feat was made all that more impressive with the fact the MSU's five starters never left the game in the second half and combined for all 64 of the Racers' points Saturday.

THURSDAY'S OPPONENT:

at Eastern Illinois Panthers


Jan. 17, 2019

12 p.m.

Lantz Arena

SERIES HISTORY: The Racers enter Thursday's meeting with Eastern Illinois on a six-game win streak in the series, including the last three in Charleston. Murray State leads the all-time series with the Panthers, 31-19, but trails the series at Eastern Illinois, 13-11.

SCOUTING REPORT: After falling at Jacksonville State and at Tennessee Tech last week, Eastern Illinois is now 7-8 on the year and 1-3 in OVC play. The Panthers currently average 70.1 points per game, while giving up 63.6. Like the Racers, they shoot the ball fairly well, at 42.7 percent compared to 42.1 by MSU, and also excel at shooting the three ball, knocking down 34.1-percent of all 3-pointers taken. Karlee Pace leads EIU on the season with 14.7 points per game, while Taylor Steele follows at 10.9. Grace McRae currently leads her team in rebounding at 6.8 per game, while Jennifer Nehls is close behind at 6.3

MURRAY STATE VS. EASTERN ILLINOIS				RACERS - 31 WINS, PANTHERS - 19 WINS			
	<u>Eastern Illinois Quick Facts</u>			Head Coach: Matt Bollant			
	Founded: 1895			Alma Mater: Winona St., 1994			
	Location: Charleston, Ill..			Overall Record (season): 353-183 (17th)			
	Colors: Blue & Gray			EIU Record (season): 10-34 (2nd)			
	Enrollment: 7,526						
<u>Last 3 vs. EIU:</u>		<u>Current Streaks vs. EIU:</u>		<u>All-Time vs. EIU:</u>		<u>MSU-EIU Series Misc.:</u>	
2/22/18 @EIU W 70-63		Overall: Won 6		Home: 18-6		First Meeting: 1/14/78 @MSU W 84-53	
12/28/17 @MMSU W 72-61		Home: Won 3		Away: 11-13		Largest MSU Win: 2/28/04 @MSU W 84-53	
2/15/17 @EIU W 66-57		Away: Won 3		Neutral: 2-0		Largest EIU Win: 1/2/12 @EIU L 51-76	

SATURDAY'S OPPONENT:

at SIUE Cougars


Jan. 19, 2019

2 p.m.

Valdalabene Center

SERIES HISTORY: In one of the youngest regular series that the Racers play, SIUE currently leads the way with 11 wins in 18 meeting. Saturday will be the 10th all-time meeting in Edwardsville, with the Cougars leading there as well, 6-3.

SCOUTING REPORT: The Cougars split a pair of road games last weekend and are now 2-2 in the OVC and 7-8 overall. SIUE's offense is not one of the most prolific in the league, at just 58.7 points per game, however, their defense is one of the better ones, giving up a meager 61.1 points a night. The Cougars are also one of the better rebounding teams in the league at 41.5 per game, the second best average in the OVC, to go along with a +3.2 rebound margin. Allie Troeckler currently leads the Cougars in points per game at 9.4, while Nakiah Bell follows closely at 9.3. Sydney Bauman leads the way for SIUE in the rebounding category with 8.2 per game, while Troeckler chips in 6.3.

MURRAY STATE VS. SIUE			COUGARS - 11 WINS , RACERS - 7 WINS		
	<u>SIUE Quick Facts</u> Founded: 1957 Location: Edwardsville, Ill.. Colors: Red & White Enrollment: 13,281		Conference: Ohio Valley Arena: Valdalabene Center (4,000) 2017-18 Rec.: 17-15 (13-5, T-2nd OVC) Postseason: L OVC SF		Head Coach: Paula Buscher Alma Mater: Missouri St., 1986 Overall Record (season): 312-325 (22nd) SIUE Record (season): 102-99 (75th)
	Last 3 vs. SIUE: 2/10/18 @SIUE L 68-77 1/30/17 @MSU L 70-75 2/18/17 @MSU L 76-85	<u>Current Streaks vs. SIUE:</u> Overall: Lost 3 Home: Lost 5 Away: Lost 1	<u>All-Time vs. SIUE:</u> Home: 4-5 Away: 3-6 Neutral: 1-1	<u>MSU-SIUE Series Misc.:</u> First Meeting: 12/16/85 @MSU W 83-75 Largest MSU Win: 12/15/86 @MSU W 88-53 Largest SIUE Win: 1/24/15 @SIUE L 52-78	

2018-19 MURRAY STATE ROSTER

No.	Player	Pos.	Ht.	Yr.	Hometown (Previous School)
0	Janika Griffith-Wallace	G	5-9	So.	Brampton, Ontario (Tech Academy at Sault Ste Marie)
1	Raegan Blackburn	G	5-8	Fr.	Greenville, Ky. (Muhlenberg County HS)
2	Sadie Hill	F/G	6-0	Fr.	Indianapolis, Ind. (Perry Meridian HS)
3	DeAsia Outlaw	G	5-11	Jr.	Henderson, Ky. (Wabash Valley CC)
4	Lex Mayes	G	5-7	Fr.	Murray, Ky. (Murray HS)
5	Macey Turley	G	5-6	Fr.	Murray, Ky. (Murray HS)
11	Paige Barrett	G/F	5-10	So.	Scottsburg, Ind. (Scottsburg HS)
14	Evelyn Adebayo	F	6-0	Jr.	London, England (Gardner-Webb)
20	Cekeya Mack	F	6-0	Jr.	Albany, Ga. (Albany Tech)
31	Brianna Crane	F	6-0	So.	Birmingham, Ala. (Ramsay HS)
32	Alexis Burpo	F/G	5-10	Fr.	Murray, Ky. (Murray HS)
33	Michaela Manley	G	5-10	Sr.	Benton, Ky. (Marshall County HS)
44	Macie Gibson	F	6-1	Fr.	Booneville, Ky. (Owsley County HS)

Head Coach: Rechelle Turner (Murray St., 1996), 2nd Season

Assistant Coaches: Amber Guffey (Murray St., 2009), 2nd Season;
 Jauwan Scaife (Ball St., 2012), 1st Season; Monica Evans, 2nd Season

PRONUNCIATION GUIDE

JANIKA Griffith-Wallace.....Juh-nee-kuh
 Evelyn ADEBAYO.....Add-uh-buy-oh
 CEKEYA Mack.....Suh-key-uh
 DEASIA Outlaw.....Dee-Asia
 RECHELLE TurnerRuh-shell
 JAUWAN SCAIFE.....Juh-wahn Scayf

HOW THEY RANK - TEAM

Statistic	Team	National Rank	Conference Rank	Value	National Leader	Value
Assist Turnover Ratio (349 ranked)	Eastern Ill. Murray St. SIUE	143 196 200	5 7 8	0.87 0.77 0.76	Oregon	1.85
Assists (349 ranked)	Eastern Ill. Murray St. SIUE	123 179 244	4 6 9	222 202 181	Drake	356
Assists Per Game (349 ranked)	Eastern Ill. Murray St. SIUE	88 163 243	4 6 9	14.8 13.5 12.1	Baylor	22.8
Blocked Shots (349 ranked)	SIUE Murray St. Eastern Ill.	97 207 216	5 7 8	60 43 42	Georgia	116
Blocked Shots Per Game (349 ranked)	SIUE Murray St. Eastern Ill.	82 205 215	5 7 8	4.0 2.9 2.8	South Carolina	7.1
Defensive Rebounds per Game (29 ranked)					Baylor	35
Fewest Fouls (345 ranked)	Murray St. Eastern Ill. SIUE	45 235 276	1 5 8	229 286 302	Penn	145
Fewest Turnovers (349 ranked)	SIUE Eastern Ill. Murray St.	128 190 219	5 7 9	238 255 264	Wyoming	142
Field-Goal Percentage (349 ranked)	Eastern Ill. Murray St. SIUE	82 103 297	3 4 9	42.7 42.1 36.2	Oregon	52.2
Field-Goal Percentage Defense (349 ranked)	SIUE Eastern Ill. Murray St.	62 191 264	4 5 8	36.8 39.8 41.6	Baylor	30.0
Free Throw Attempts (349 ranked)	Murray St. SIUE Eastern Ill.	108 233 248	6 9 10	291 246 239	Arkansas St.	425
Free Throws Made (347 ranked)	Murray St. Eastern Ill. SIUE	56 267 271	5 9 10	218 156 155	Notre Dame	290
Free-Throw Percentage (349 ranked)	Murray St. Eastern Ill. SIUE	39 253 293	3 9 10	74.9 65.3 63.0	Virginia Tech	81.0
Offensive Rebounds per Game (30 ranked)					Troy	23
Personal Fouls Per Game (349 ranked)	Murray St. Eastern Ill. SIUE	58 263 301	1 5 9	15.3 19.1 20.1	UConn	11.3
Rebound Margin (349 ranked)	SIUE Murray St. Eastern Ill.	100 114 185	2 3 7	3.2 2.8 0.5	Baylor	18.5
Rebounds (349 ranked)	SIUE Murray St. Eastern Ill.	118 155 217	4 6 9	622 595 565	Miami (FL)	779
Rebounds Per Game (349 ranked)	SIUE Murray St. Eastern Ill.	57 111 186	2 4 9	41.47 39.67 37.67	Troy	51.60
Scoring Defense (349 ranked)	SIUE Eastern Ill. Murray St.	116 165 292	3 5 9	61.9 63.6 70.2	Drexel	46.6
Scoring Margin (349 ranked)	Eastern Ill. Murray St. SIUE	107 179 249	5 8 10	6.5 1.0 -3.2	Mississippi St.	35.9
Scoring Offense (349 ranked)	Murray St. Eastern Ill. SIUE	82 98 288	4 6 10	71.2 70.1 58.7	Mississippi St.	91.4

HOW THEY RANK - TEAM

	Murray St.	180	8	122		
Steals Per Game (349 ranked)	Eastern Ill.	27	3	11.2	Lamar University	15.9
	SIUE	146	5	8.3		
	Murray St.	161	7	8.1		
Three Pt FG Defense (349 ranked)	SIUE	5	1	23.2	Miami (OH)	20.6
	Eastern Ill.	99	4	29.1		
	Murray St.	259	8	32.9		
Three-Point Field Goals Attempted (150 ranked)	Eastern Ill.	127	8	320	DePaul	611
Three-Point Field Goals Made (349 ranked)	Eastern Ill.	99	6	109	DePaul	200
	Murray St.	188	8	88		
	SIUE	312	11	61		
Three-Point Field Goals Per Game (349 ranked)	Eastern Ill.	85	5	7.3	FGCU	12.1
	Murray St.	180	8	5.9		
	SIUE	318	11	4.1		
Three-Point Field-Goal Percentage (349 ranked)	Eastern Ill.	74	2	34.1	Oregon St.	43.3
	Murray St.	112	4	32.7		
	SIUE	317	10	26.4		
Turnover Margin (349 ranked)	Eastern Ill.	48	3	3.80	Lamar University	11.27
	SIUE	250	10	-1.53		
	Murray St.	271	11	-2.13		
Turnovers Forced (349 ranked)	Eastern Ill.	33	3	20.80	Northwestern St.	26.47
	Murray St.	239	9	15.47		
	SIUE	290	10	14.33		
Turnovers Per Game (349 ranked)	SIUE	155	6	15.9	Fordham	10.5
	Eastern Ill.	215	7	17.0		
	Murray St.	247	9	17.6		
Won-Lost Percentage (348 ranked)	Eastern Ill.	207	6	46.7	NC State	100.0
	SIUE	207	6	46.7		
	Murray St.	235	10	40.0		

HOW THEY RANK - INDIVIDUAL

Statistic	Player	National Rank	Conference Rank	Value	National Leader	Value
Assist Turnover Ratio (250 ranked)	Grace Lennox, Eastern Ill. Macey Turley, Murray St.	151 170	6 7	1.57 1.50	Jazzmun Holmes, Mississippi St.	4.20
Assists (148 ranked)	Macey Turley, Murray St.	60	1	75	Sabrina Ionescu, Oregon Shania Johnson, Stony Brook	139 139
Assists Per Game (250 ranked)	Macey Turley, Murray St. Grace Lennox, Eastern Ill.	57 204	1 9	5.0 3.7	Sabrina Ionescu, Oregon	8.7
Blocked Shots (139 ranked)	Sydney Bauman, SIUE	29	2	33	Ae'Rianna Harris, Purdue	61
Blocked Shots Per Game (222 ranked)	Sydney Bauman, SIUE	31	2	2.20	Channon Fluker, CSUN	3.63
Defensive Rebounds per Game (30 ranked)	Evelyn Adebayo, Murray St.	14	1	8	Regan Magarity, Virginia Tech	11
Double Doubles (45 ranked)	Evelyn Adebayo, Murray St.	19	1	8	Kristine Anigwe, California	15
Field Goal Attempts (150 ranked)					Kierra Anthony, Louisiana Tech	322
Field Goals Made (150 ranked)	Evelyn Adebayo, Murray St.	99	3	96	Megan Gustafson, Iowa	161
Field-Goal Percentage (250 ranked)	Evelyn Adebayo, Murray St. Karle Pace, Eastern Ill.	119 183	3 5	48.0 45.2	Megan Gustafson, Iowa	70.0
Final Points (197 ranked)	Evelyn Adebayo, Murray St.	72	3	280	Kierra Anthony, Louisiana Tech	412
Free Throw Attempts (144 ranked)	Evelyn Adebayo, Murray St.	32	2	93	Cierra Dillard, Buffalo	139
Free Throws Made (147 ranked)	Evelyn Adebayo, Murray St.	24	1	74	Lexi Klabo, North Dakota	119
Free-Throw Percentage (250 ranked)	Evelyn Adebayo, Murray St.	130	4	79.6	Rebekah Hand, Marist	96.4
Minutes Played (150 ranked)					Karissa McLaughlin, Purdue	659:38
Minutes Played Per Game (150 ranked)					Kyara Frames, Albany (NY)	38.88
Offensive Rebounds per Game (30 ranked)					Teaira McCowan, Mississippi St.	6
Points Per Game (250 ranked)	Evelyn Adebayo, Murray St. Karle Pace, Eastern Ill.	50 211	2 7	18.7 14.7	Megan Gustafson, Iowa	25.9
Rebounds (145 ranked)	Evelyn Adebayo, Murray St. Sydney Bauman, SIUE	45 127	1 3	151 123	Kristine Anigwe, California	217
Rebounds Per Game (250 ranked)	Evelyn Adebayo, Murray St. Sydney Bauman, SIUE	37 106	1 3	10.1 8.2	Kristine Anigwe, California	14.5
Steals (146 ranked)	Grace Lennox, Eastern Ill.	112	6	32	Chastadie Barrs, Lamar University	91
Steals Per Game (246 ranked)	Grace Lennox, Eastern Ill.	113	5	2.13	Chastadie Barrs, Lamar University	6.07
Three-Point Field Goals Attempted (148 ranked)					Shania Johnson, Stony Brook	163
Three-Point Field Goals Made (137 ranked)					Lauren Loven, Denver	74
Three-Point Field Goals Per Game (249 ranked)	Nakiah Bell, SIUE	197	6	2.00	Taylor Robertson, Oklahoma	4.13
Three-Point Field-Goal Percentage (234 ranked)	Nakiah Bell, SIUE	191	6	33.0	Jocelyn Willoughby, Virginia	50.7
Triple Doubles (4 ranked)					Sabrina Ionescu, Oregon	5

THE INSIDE TRACK

GAME 15-16 NOTES - EIU & SIUE

A WIN THURSDAY WOULD...

Give the Racers their first back-to-back road wins since 2016-17. A weekend sweep would give MSU its first three-game road winning streak since 2012-13 season, when it won four in a row.

STOCKPILING

Evelyn Adebayo picked up her fifth Newcomer of the Week honor Tuesday, while Macey Turley received her fourth Freshman of the Week honor. Adebayo average a double-double over two games, while Turley averaged 21.5 including 32 at SEMO.

A NEW MEMBER

With 32 points at SEMO, Macey Turley became just the fifth Murray State freshman to score at least 30 points in a single game Saturday.

Name	Opp. (Date)	Pts.
Rona Poe	SIUE (12/16/85)	34
Sheila Smith	YSU (1/18/86)	34
Lori Trumblee	BUT (11/30/02)	32
Macey Turley	SEMO (1/12/19)	32
Sheila Smith	EKU (1/25/86)	31
Ke'Shunnan James	APSU (2/7/15)	31

BASKETBALL ON YOUR LUNCH BREAK

This week the Racers will play two afternoon games including a rare weekday OVC matinee. MSU has played two game this season that started before 4 p.m. and went 1-1. The Racers fell against Kentucky in December a Noon Eastern tip, but were victorious last Saturday at SEMO with a 2 p.m. start.

OK, WHAT'S NEXT?

The Racers return home next week to host Belmont Thursday and Tennessee State Saturday.

GAME 13-14 NOTES - UTM & SEMO

A WIN IN EITHER GAME WOULD...

Give the Racers their first win at UT Martin in six years and the first at SEMO in eight years.

REUNION

Thursday will be a reunion of sorts for head coach Rechele Turner and players Lex Mayes, Macey Turley and Alexis Burpo. It will mark the first time that they have been on the court with former player/teammate Maddie Waldrop since the latter graduated from Murray High two years ago.

ADDING UP

With 25 points and 11 rebounds Evelyn Adebayo tallied her sixth double-double of the season. She currently leads the Racers with 18.5 points and 9.9 rebounds per game.

WORKING THE LINE

Thursday will be a battle of the two best free-throw shooting teams in the OVC. UT Martin currently leads the league at 76.8 percent, while the Racers follow at 76.2.

GAME 12-13 NOTES - MOR & ECU

A WIN THURSDAY WOULD...

Put an end to a three-game skid by the Racers. Murray State has lost its last three game with its last win coming against Bethel on Dec. 13.

THE SECOND SEASON

The Racers are 21-20 all-time in OVC openers and are 15-7 in those game when they are played in Murray. MSU has won its last three OVC openers and 5-4 all-time in conference lid lifters against Morehead State.

KEEP 'EM COMIN'

On Monday, Evelyn Adebayo won her second OVC Player of the Week award and fourth Newcomer of the Week honor. The junior had a career-high 28 at No. 10 Tennessee and went 7-for-7 at the free throw line.

IT'S A SMALL, SMALL WORLD

Both Murray State's Janika Griffith-Wallace and Morehead State's Georgia Campbell hail from the Toronto suburb of Brampton in Canada, while the Racers' DeAsia Outlaw and the Eagles' Ashley Moore played junior college ball together at Wabash Valley.

GAME 11 NOTES - UT

A WIN FRIDAY WOULD...

Give MSU its first win over an SEC team since 1980, when the Racers defeated Vanderbilt. Currently, MSU is 6-35 against the Southeastern Conference.

MORE HARDWARE

For the third time this season, Evelyn Adebayo was named as the OVC Newcomer of the Week. Over two games, she averaged 18.5 points and 8.5 rebounds.

ROLE REVERSAL

The Lady Vols are currently ranked 48th out of 349 teams in Division I when it comes to getting to the free throw line. However, when they get there they have trouble, shooting just 67.1 percent and ranking 209th. Conversely, MSU is the 28th best free throw shooting team in the country at 75.7 percent, but they have trouble getting to the line, ranking 231st in attempts at just 17.3 per game.

GAME 10 NOTES - UK

GETTING IT DONE

Despite using just two bench players Tuesday against SIU, the Racer reserves still outscored their SIU counterparts 18-9, despite the Salukis using three more players. Brianna Crane dumped in 13 points, while Alexis Burpo added six.

THE KEY

One thing has separated the Racer wins from losses this season on the stat sheet and that is field-goal percentage. MSU is 4-0 when outshooting their opponents and 0-5 when being outshot.

GAME 9 NOTES - SIU

A WIN TUESDAY WOULD...

Give the Racers a much-needed boost of momentum as they head into arguably their two toughest games of the season; at No. 18 Kentucky On Dec. 22 and at No. 9 Tennessee on Dec. 28.

A CLEAN SWEEP

Evelyn Adebayo and Macey Turley swept the weekly OVC awards for the Racers Tuesday with Adebayo being named both Player and Newcomer and Turley earning the Freshman nod. Adebayo notched a double-double in both games last week to average 22.0 point and 13.0 rebounds, while Turley averaged 14.0 points and 5.0 assists.

LEADING THE WAY

Evelyn Adebayo has had the most points and rebounds, either by herself or shared, in every game for the Racers this season. Already with five double-doubles in eight games, the transfer is averaging 17.6 point and 10.8 rebounds per game.

THE INSIDE TRACK

WELCOME BACK

For the first time since her departure following the 2007-08 season, Jody Adams returns to the CFSB Center, this time as an assistant coach for SIU. Adams coached one season at the Bank, guiding the Racers to a 24-8 mark, an OVC tournament title and the program's first trip to the NCAA Tournament. Current Racer assistant Amber Guffey was a member Adams' championship squad.

GAME 8 NOTES - BET

A WIN THURSDAY WOULD...

Snap a three-game skid by the Racers which includes losses at Arkansas State and Illinois and at home against Alabama A&M.

FOUR & COUNTING

Evelyn Adebayo notched her fourth double-double of the season at Illinois with a career-high 23 points and 13 rebounds, which tied her previous career best.

BEST BEHAVIOR

The Racers continue to be one of the most disciplined teams in the nation as they have committed the sixth fewest fouls in the country. The Racers currently have 101 fouls on the season, while leader Montana has 94. at the CFSB Center in 2018.

GAME 7 NOTES - ILL

A WIN TUESDAY WOULD...

Give the Racers their first win over a Big Ten program. MSU is currently 0-4 against the power five league going with two losses against Indiana and one each against Purdue and Illinois.

DOIN' WORK

Through the first six games this season, Evelyn Adebayo has had three double-doubles. She is currently averaging 16.2 points and 10.0 rebounds per game placing her fourth and second in each category, respectively.

GAME 6 NOTES - AAMU

A WIN SATURDAY WOULD...

Give the Racers just their third 4-0 start at home since 2008-09. The only other previous time the Racer won their first four at The Bank was two seasons ago in 2016-17.

MOVIN' ON UP

With their 18-for-20 performance at the charity stripe Tuesday at Arkansas State, the Racers skyrocketed from 10th to 4th nationally in free throw percentage. MSU is currently shooting 82.2 percent from the free throw line, while DePaul leads the nation at 85.0.

DANGEROUS FROM DOWNTOWN

As a team, Murray State currently has the seventh best three-point shooting percentage in the nation at 41.8 and the nation's 12th-best three-point shooter in Lex Mayes, who is making 55.2-percent of her three-point attempts. St. Francis Brooklyn currently paces the nation in team percentage at 44.4, while Shalexxus Aaron leads individually at 72.7 percent.

BEASTS UNDERNEATH

The Racers currently lead the OVC in both rebounds per game and rebound margin. MSU currently averages 43.0 boards per game, while outrebounding their opponents by an average of 9.6 rebounds per game. Those numbers currently place the Racers 47th nationally in rebounds per game and 27th in rebound margin.

GAME 5 NOTES - ASU

A WIN TUESDAY WOULD...

Give the Racers their first win over a program that sponsors FBS football since 2012 when they defeated Ball State at home, 63-53.

RANK AND FILE

Murray State currently ranks in the top 10 nationally in three separate categories. They are 10th in free throw percentage at 80.0, eighth in scoring offense at 89.0 and fifth in fewest fouls at 54.

EIGHT IS GREAT

In three of their four games this season, the Racers have limited their opponents to just eight points in the opening stanza. They did so against Evansville, Oakland City and Lipscomb and went 3-0 in those contests.

THREE FOR ALL

Macey Turley kept Murray State's streak of winning a weekly award alive Tuesday when she was named as the OVC Freshman of the Week for the second time this season.

A FRIENDLY FACE

Arkansas State assistant Todd Buchanan is no stranger to the Racers, as he is a 1995 graduate of Murray State. In addition to his time as a student at Murray State, Buchanan served as an assistant for the Racer women from 1992-1995 and also coached at three local high schools; Lyon County, Calloway County and Murray.

GAME 4 NOTES - LIP

A WIN TUESDAY WOULD...

Give the Racers their first three-game win-streak at home since 2016-17 when they posted wins over MacMurray, Tennessee State and Eastern Illinois (Dec. 12 -Jan. 11).

BACK-TO-BACK

Although she did come up just short of her third straight double-double against Butler, Evelyn Adebayo was named as the OVC Newcomer of the Week, giving the Racers a weekly winner in each of the first two weeks of the season. Macey Turley was the first winner for Murray State, taking home freshman honors last week.

TURNOVER TROUBLE

The Racers committed a season-high 23 turnovers against Butler, leading directly to 27 points for the Bulldogs. The game also marked the first-time this year that MSU had finished a game with more turnovers than assists (11).

GAME 3 NOTES - BUT

DOUBLE YOUR FUN

For the second time in as many games, Evelyn Adebayo notched a double-double. Through two games this season she is averaging 18.0 points per game and 11.5 rebounds.

BIG NUMBERS

The Racers scored 113 points against Oakland City Saturday for the fourth most points in school single-game history. In addition, the Racers' 40-made field goals is the 11th most in program history.

SPREADING THE LOVE

All 12 eligible players played for the Racers with 11 of them tallying points. Of the 11 players that scored in the game, seven reached double digits.

GAME 2 NOTES - OAK

OPENING STATEMENT

MSU's win Wednesday was the first in a season opener against a Division I team since beating the Purple Aces to start the 2011-12 season, as well as the largest margin of victory against any Division I opponents since a 32 point win over Alabama A&M in 2016-17.

HISTORIC DEBUT

With game-highs of 18 points and 10 rebounds, Evelyn Adebayo became the first known Racer to debut with a double-double (single-game records dating back to 1997-98) Wednesday versus Evansville.

QUICK TURNAROUND

In Wednesday's opener, the Racers addressed two areas of concerns from the exhibition Thursday night, three-point and free throw shooting. The Racers were just 1-for-13 (7.7%) from three and 19-for-35 (54.3%) in their lone exhibition. However, on Wednesday, MSU was 7-for-10 (70.0%) from the stripe and 10-for-20 (50.0 %) from beyond the arc.

GAME 1 NOTES - UE

LIFTING THE LID

Murray State opens its 52nd season of women's basketball Wednesday and is 22-30 all-time in season openers and 26-23 in home openers. The Racers are 4-4 all-time against UE in season openers and 3-3 against the Purple Aces in home openers.

SHAKING THE DUST OFF

The Racers won their only exhibition of the year last Thursday, 72-51 over Lindsey Wilson. After sitting out last season due to NCAA transfer rules, Evelyn Adebayo easily got back in the groove and led MSU with 21 points, while Janika Griffith-Wallace posted a double-double with 13 points and 11 rebounds.

NEXT ONE UP

The Racers return just 20.4 percent of their scoring from last year with the most notable loss being the 2017-18 OVC Player of the Year, Ke'Shunna James. Brianna Crane will lead all returners this season after averaging 7.2 points and 5.7 rebounds per game last season.

HEAD COACH RECEHELLE TURNER

2ND SEASON AT MSU/2ND SEASON OVERALL

TURNER'S CAREER YEAR-BY-YEAR COACHING RECORD

Year	Team	OVERALL			OVC			POSTSEASON		
		W	L	Pct.	W	L	Pct.	W	L	Pct.
2017-18	Murray St.	11	19	.367	7	11	.389	0	1	.000
2018-19	Murray St.	6	9	.400	2	2	.500	-	-	.000
TOTAL		16	28	.363	9	13	.409	0	1	.000
OT		0	1	.000	0	1	.000	0	1	.000

TURNER VS. THE COMPETITION

OPPONENT	RECORD	OPPONENT	RECORD
Austin Peay*	1-1	Lipscomb	1-1
Alabama	1-0	Louisville	0-1
Alabama A&M	0-2	Mississippi Valley St.	1-0
Arkansas St.	0-1	Morehead St.*	0-2
Belmont*	0-2	UNC Greensboro	1-0
Bethel (TN)	2-0	Oakland City	1-0
Butler	0-2	Northern Kentucky	1-0
Evansville	1-1	Southern Illinois	0-1
ETSU	0-1	SIUE*	0-2
Eastern Illinois*	2-0	Southeast Missouri*	1-2
Eastern Kentucky*	2-0	Tennessee	0-1
Illinois	0-1	Tennessee State*	1-0
Jacksonville State*	0-2	Tennessee Tech*	2-0
Kentucky	0-1	UT Martin*	1-2

2018 Opponents Listed In BOLD

*Indicates OVC Opponent

THE RACERS ARE....

6-9	...Overall	2-7	...Bench outscored by Opp. bench	3-2	...in November
2-2	...vs. OVC		...Tied, bench scoring	1-5	...in December
4-7	...vs. Non-Conference	6-4	...Outrebound Opponent	2-2	...in January
		0-5	...Outrebounded by Opponent		...in February
			...Tied, rebounds		...in March
		5-5	...More FTM than Opponent		
6-1	...Leading at Half	1-3	...Less FTM than Opponent		...on Mondays
0-8	...Trailing at Half	0-1	...Tied, FTM	1-4	...on Tuesdays
	...Tied at Half	5-1	...More 3FGM than Opponent	1-0	...on Wednesdays
	...In Overtime	1-8	...Less 3FGM than Opponent	1-2	...on Thursdays
6-1	...Outshoot Opponent (%)		...Tied, 3FGM	0-2	...on Fridays
0-8	...Outshot by Opponent (%)	2-7	...More turnovers than Opponent	3-1	...on Saturdays
	...Tied opponent, shooting (%)	4-2	...Less turnovers than Opponent		...on Sundays
7-3	...Shoot .400 or better		...Tied, turnovers		
0-5	...Shoot under .400	0-4	...Score ≤ 60	1-1	...in the Afternoon (Before 4 p.m.)
0-6	...Opponent shoot .400 or better	5-1	...Score 75+	5-8	...in the Evenings (4 p.m. or After)
7-5	...Opponent shoot under .400	4-1	...Opponents Score ≤ 60		
4-2	...Bench outscores Opp. bench	0-6	...Opponents Score 75+		

2018 SCORE BY QUARTERS

	1st Qtr.	2nd Qtr.	3rd Qtr.	4th Qtr.	OT	Total
Murray St.	247	241	291	289	0	1068
Avg.	16.5	16.1	19.4	19.3	0.0	71.2
Opponents	215	279	309	250	0	1053
Avg.	14.3	18.6	20.6	16.7	0.0	70.2

BENCH SCORING

RACERS	OPPONENTS
Season Avg.: 19.3	Season Avg.: 26.5
Team High: 60 (OCU, 11/10)	Team High: 41 (MOR, 1/3)
Team Low: 0 (SEMO, 1/12)	Team Low: 7 (BET, 12/13)
Individual High: 14 - Burpo (OCU, 11/10)	Individual High: 28 - Jeune (MOR, 1/3)

2018 WON-LOST MARGINS

Margin	1	2	3	4	5	6	7	8	9	10	11	12	13	14	15
Won By					1										
Lost By						2		1			1				
Margin	16	17	18	19	20	21	22	23	24	25	26	27	28	29	30+
Won By			1										1		3
Lost By						2	1								2

2018-19 TEAM HIGHS & LOWS - RACERS

CATEGORY	HIGH	LOW
Total Points	113 - OCU, 11/10	49 - UK, 12/21
Points In A Quarter	33 - [3rd, 4th] OCU, 11/10	6 - [2nd] AAMU, 12/1; [1st] ILL, 12/11
Overtime Points	---	---
FG Made	40 - OCU, 11/10	19 - 4 Times
FG Attempted	79 - OCU, 11/10	46 - SEMO, 1/12
FG%	51.5 - BET, 12/13	27.1 - ILL, 12/11
3PT FG Made	14 - LIP, 11/20	0 - AAMU, 12/1
3PT FG Attempted	26 - LIP, 11/20; UT, 12/28	11 - ASU, 11/27; AAMU, 12/1
3PT FG%	58.3 - LIP, 11/20	0.0 - AAMU, 12/1
FT Made	28 - OCU, 11/10	7 - UE, 11/7; UK, 12/21
FT Attempted	34 - OCU, 11/10	10 - UE, 11/7; BUT, 11/13
FT%	90.0 - ASU, 11/27	50.0 - UK, 12/21
Rebounds	57 - OCU, 11/10	24 - UT, 12/28
Offensive Rebounds	20 - OCU, 11/10	6 - UT, 12/28
Defensive Rebounds	40 - BET, 12/13	18 - UT, 12/28
Assists	23 - OCU, 11/10	7 - SIU, 12/18
Steals	24 - OCU, 11/10	4 - 3 Times
Turnovers	27 - UK, 12/21	9 - LIP, 11/20
Blocked Shots	5 - LIP, 11/20	1 - 3 Times
Assist/Turnover Ratio	2.5 - LIP, 11/20	0.4 - ASU, 11/27; SIU, 12/18
Fouls	25 - ASU, 11/27	9 - ILL, 12/11

2018-19 TEAM HIGHS & LOWS - OPPONENTS

CATEGORY	HIGH	LOW
Total Points	97 - UT, 12/28	50 - BET, 12/13
Points In A Quarter	35 - [3rd] UT, 12/28	3 - [1st] BET, 12/13
Overtime Points	---	---
FG Made	41 - UT, 12/28	13 - BET, 12/13
FG Attempted	81 - UT, 12/28	55 - SIU, 12/18
FG%	56.5 - ILL, 12/11	22.4 - BET, 12/13
3PT FG Made	11 - MOR, 1/3	2 - SEMO, 1/12
3PT FG Attempted	27 - UTM, 1/10	10 - AAMU, 12/1
3PT FG%	47.6 - UK, 12/21	16.7 - SEMO, 1/12
FT Made	19 - UTM, 1/10	6 - 3 Times
FT Attempted	30 - ASU, 11/27	8 - UE, 11/7
FT%	90.9 - SIU, 12/18	56.3 - UT, 12/28
Rebounds	56 - UT, 12/28	27 - OCU, 11/10; SIU, 12/18
Offensive Rebounds	25 - UT, 12/28	5 - SIU, 12/18
Defensive Rebounds	34 - AAMU, 12/1	17 - SEMO, 1/12
Assists	23 - ILL, 12/11	6 - UE, 11/7; BET, 12/13
Steals	17 - BUT, 11/13	4 - LIP, 11/20; ILL, 12/11
Turnovers	32 - OCU, 11/10	7 - MOR, 1/3
Blocked Shots	8 - ILL, 12/11	0 - LIP, 11/20
Assist/Turnover Ratio	2.1 - ILL, 12/11; MOR, 1/3	0.3 - OCU, 11/10; LIP, 11/20
Fouls	22 - SEMO, 1/12	12 - BUT, 11/13; ILL, 12/11

2018-19 INDIVIDUAL GAME HIGHS

CATEGORY	MURRAY STATE	OPPONENT
Total Points	32 - Turley (SEMO, 1/12)	28 - Jeune (MOR, 1/3)
Points In A Quarter	13 [1st] - Adebayo (UTM, 1/12)	17 [3rd] - Howard (UK, 12/21)
Overtime Points	---	---
FG Made	10 - Adebayo (UT, 12/28)	11 - Wittinger (ILL, 12/11); Jeune (MOR, 1/3)
FG Attempted	22 - Adebayo (ILL, 12/11)	23 - Jeune (MOR, 1/3)
3PT FG Made	5 - Mayes (BUT, 11/13)	5 - Howard (UK, 12/21)
3PT FG Attempted	9 - Griffith-Wallace (UT, 12/28); Mayes (MOR, 1/3)	9 - Jeune (MOR, 1/3); Shepard (SEMO, 1/12)
FT Made	11 - Adebayo (UTM, 1/10); Turley (SEMO, 1/12)	10 - Robertson (UTM, 1/10)
FT Attempted	9 - Adebayo (3 Times)	16 - Robertson (UTM, 1/10)
Rebounds	13 - Adebayo (3 Times)	13 - Davis (UT, 12/28)
Offensive Rebounds	5 - 4 Times	7 - Davis (UT, 12/28)
Defensive Rebounds	11 - Adebayo (BET, 12/13)	8 - Waldrop (UTM, 110)
Assists	9 - Turley (UE, 11/7)	9 - Dotson (AAMU, 12/1)
Steals	4 - Mack (OCU, 11/10)	5 - Weaver, Jennings (BUT, 11/13)
Turnovers	9 - Adebayo (UK, 12/21)	10 - Sanford (OCU, 11/10)
Blocks	3 - Mack (ASU, 11/27)	4 - Coffman (UE, 11/7); Elder (ASU, 11/27)
Minutes	39 - Turley (UTM, 1/10); Adebayo (SEMO, 1/12)	40 - Westbrook (ASU, 11/27)

2018-19 GAME-BY-GAME INDIVIDUAL HIGHS

Game	Points	Rebounds	Assists	Steals	Blocks
11/7 - Evansville	18 - Adebayo	10 - Adebayo	9 - Turley	3 - Turley	1 - 4 Players
11/10 - Oakland City	18 - Adebayo	13 - Adebayo	7 - Turley	4 - Mack	1 - 2 Players
11/13 - at Butler	15 - Adebayo, Mayes	9 - Adebayo	5 - Turley	3 - Outlaw, Turley	2 - Mack
11/20 - Lipscomb	21 - Turley	9 - Adebayo	6 - Turley	3 - Griffith-Wallace	2 - Burpo
11/27 - at Arkansas St.	18 - Adebayo	9 - Adebayo	5 - Turley	2 - Burpo, Crane	3 - Mack
12/1 - Alabama A&M	15 - Adebayo	10 - Adebayo	4 - Turley	3 - Mayes	1 - 3 Players
12/11 - at Illinois	23 - Adebayo	13 - Adebayo	4 - Turley	2 - Mayes, Adebayo	1 - Manley
12/13 - Bethel (TN)	21 - Adebayo	13 - Adebayo	6 - Turley	3 - Griffith-Wallace	2 - Mack
12//18 - Southern Ill.	17 - Adebayo	8 - Adebayo	5 - Turley	2 - Mayes	2 - Mack
12/21 - at Kentucky	20 - Adebayo	9 - Adebayo	5 - Turley	3 - Griffith-Wallace	1 - Burpo
12/28 - at Tennessee	28 - Adebayo	8 - Crane	4 - Turley	3 - Adebayo	1 - Hill
1/3 - Morehead St.	14 - Turley	10 - Adebayo	3 - Burpo	1 - 5 Players	1 - Adebayo, Mack
1/5 - Eastern Ky.	25 - Adebayo	11 - Adebayo	5 - Griffith-Wallace	3 - Burpo, Mayes	1 - 3 Players
1/10 - at UT Martin	25 - Adebayo	12 - Adebayo	6 - Turley	1 - 4 Players	1 - Mayes, Turley
1/12 - at Southeast Mo.	32 - Turley	10 - Adebayo	3 - Turley, Burpo	3 - Turley	2 - Adebayo
1/17 - at Eastern Ill.					
1/19 - at SIUE					
1/24 - Belmont					
1/26 - Tennessee St.					
1/31 - at Jacksonville State					
2/2 -at Tennessee Tech					
2/7 - Eastern Ill.					
2/9 - SIUE					
2/14 - at Eastern Ky.					
2/116 - at Austin Peay					
2/21 - UT Martin					
2/23 - Southeast Mo.					
2/28 - at Morehead St.					
3/2 - Austin Peay					

Bold Italics Indicates Team Season-High

2018-19 STARTERS BY GAME

Game	1 - G	2 - G	3 - G/F	4 - F	5 - C	Lineup # (Times Used)
11/7 - Evansville	Turley	Mayes	Outlaw	Crane	Adebayo	1 (1)
11/10 - Oakland City	Turley	Mayes	Griffith-Wallace	Crane	Adebayo	2 (1)
11/13 - at Butler	Turley	Mayes	Outlaw	Crane	Adebayo	1 (2)
11/20 - Lipscomb	Turley	Mayes	Outlaw	Burpo	Adebayo	3 (1)
11/27 - at Arkansas St.	Turley	Mayes	Outlaw	Burpo	Adebayo	3 (2)
12/1 - Alabama A&M	Turley	Mayes	Crane	Burpo	Adebayo	4 (1)
12/11 - at Illinois	Turley	Mayes	Griffith-Wallace	Burpo	Adebayo	5 (1)
12/13 - Bethel (TN)	Turley	Mayes	Griffith-Wallace	Mack	Adebayo	6 (1)
12/18 - Southern Ill.	Turley	Mayes	Griffith-Wallace	Mack	Adebayo	6 (2)
12/21 - at Kentucky	Turley	Mayes	Griffith-Wallace	Mack	Adebayo	6 (3)
12/28 - at Tennessee	Turley	Mayes	Griffith-Wallace	Crane	Adebayo	2 (2)
1/3 - Morehead St.	Turley	Mayes	Griffith-Wallace	Crane	Adebayo	2 (3)
1/5 - Eastern Ky.	Turley	Mayes	Griffith-Wallace	Crane	Adebayo	2 (4)
1/10 - at UT Martin	Turley	Mayes	Griffith-Wallace	Crane	Adebayo	2 (5)
1/12 - at Southeast Mo.	Turley	Mayes	Burpo	Crane	Adebayo	5 (2)
1/17 - at Eastern Ill.						
1/19 - at SIUE						
1/24 - Belmont						
1/26 - Tennessee St.						
1/31 - at Jacksonville St.						
2/2 - at Tennessee Tech						
2/7 - Eastern Ill.						
2/9 - SIUE						
2/14 - at Eastern Ky.						
2/116 - at Austin Peay						
2/21 - UT Martin						
2/23 - Southeast Mo.						
2/28 - at Morehead St.						
3/2 - Austin Peay						

2018-19 DOUBLE-DOUBLES

Player	Game	Category 1	Category 2
Evelyn Adebayo (1)	Evansville	18 Points	10 Rebounds
Evelyn Adebayo (2)	Oakland City	18 Points	13 Rebounds
Evelyn Adebayo (3)	Alabama A&M	15 Points	10 Rebounds
Evelyn Adebayo (4)	Illinois	23 Points	13 Rebounds
Evelyn Adebayo (5)	Bethel (TN)	21 Points	13 Rebounds
Evelyn Adebayo (6)	Eastern Ky.	25 Points	11 Rebounds
Evelyn Adebayo (7)	UT Martin	25 Points	12 Rebounds
Evelyn Adebayo (8)	Southeast Mo.	15 Points	10 rebounds
Janika Griffith-Wallace (1)	Bethel (TN)	10 Points	10 Rebounds

2018-19 HONORS

Evelyn Adebayo - F - Jr. OVC Newcomer of the Week - 11/20 OVC Player of the Week - 12/18 OVC Newcomer of the Week - 12/18 OVC Newcomer of the Week - 12/25 OVC Player of the Week - 12/31 OVC Newcomer of the Week - 12/31 OVC Newcomer of the Week - 1/15	Macey Turley - G - Fr. OVC Freshman of the Week - 11/13 OVC Freshman of the Week - 11/27 OVC Freshman of the Week - 12/18 OVC Freshman of the Week - 1/15	

2018-19 STATISTICS

RECORD:	OVERALL	HOME	AWAY	NEUTRAL
ALL GAMES	6-9	5-3	1-6	0-0
CONFERENCE	2-2	1-1	1-1	0-0
NON-CONFERENCE	4-7	4-2	0-5	0-0

#	Player	gp-gs	min	avg	Total		3-Point		F-Throw		Rebounds											
					fg-fga	fg%	3fg-fga	3fg%	ft-fa	ft%	off	def	tot	avg	pf	dq	a	to	blk	stl	pts	avg
14	Adebayo, Evelyn	15-15	484	32.3	96-200	.480	14-34	.412	74-93	.796	30	121	151	10.1	27	1	18	56	5	16	280	18.7
05	Turley, Macey	15-15	492	32.8	67-160	.419	17-57	.298	37-43	.860	15	32	47	3.1	41	0	75	50	3	20	188	12.5
04	Mayes, Lex	15-15	464	30.9	37-115	.322	28-82	.341	23-29	.793	13	33	46	3.1	40	0	16	23	4	21	125	8.3
00	Griffith-Wallace, J.	14-9	336	24.0	45-140	.321	13-49	.265	10-14	.714	8	36	44	3.1	22	0	32	38	0	17	113	8.1
31	Crane, Brianna	15-9	352	23.5	40-87	.460	0-1	.000	30-42	.714	34	53	87	5.8	14	0	11	22	4	10	110	7.3
44	Gibson, Macie	2-0	25	12.5	5-6	.833	0-0	.000	3-4	.750	3	4	7	3.5	2	0	2	0	1	0	13	6.5
32	Burpo, Alexis	15-5	311	20.7	31-68	.456	8-23	.348	8-21	.381	24	39	63	4.2	25	0	26	24	6	9	78	5.2
20	Mack, Cekeya	15-3	202	13.5	30-52	.577	0-0	.000	16-25	.640	19	35	54	3.6	26	0	4	19	13	11	76	5.1
03	Outlaw, DeAsia	9-4	125	13.9	12-29	.414	1-3	.333	4-6	.667	4	6	10	1.1	13	0	5	12	1	6	29	3.2
33	Manley, Michaela	12-0	99	8.3	9-25	.360	5-16	.313	3-4	.750	2	7	9	0.8	3	0	8	4	1	6	26	2.2
11	Barrett, Paige	10-0	35	3.5	4-12	.333	0-1	.000	8-8	1.000	6	5	11	1.1	7	0	1	3	1	3	16	1.6
02	Hill, Sadie	11-0	44	4.0	3-7	.429	1-2	.500	2-2	1.000	0	6	6	0.5	8	0	4	1	4	2	9	0.8
01	Blackburn, Raegan	9-0	30	3.3	2-4	.500	1-1	1.000	0-0	.000	0	1	1	0.1	1	0	0	1	0	1	5	0.6
	Team										25	34	59				10					
	Total.....	15	2999		381-905	.421	88-269	.327	218-291	.749	183	412	595	39.7	229	1	202	263	43	122	1068	71.2
	Opponents.....	15	3002		397-955	.416	94-286	.329	165-235	.702	184	369	553	36.9	257	-	205	230	52	131	1053	70.2

TEAM STATISTICS	MUR	OPP	Date	Opponent	Score	Att.
SCORING	1068	1053	11/07/18	EVANSVILLE	w 81-53	585
Points per game	71.2	70.2	11/10/18	OAKLAND CITY	w 113-55	938
Scoring margin	+1.0	-	11/13/18	at Butler	L 65-86	484
FIELD GOALS-ATT	381-905	397-955	11/20/18	LIPSCOMB	w 97-61	448
Field goal pct	.421	.416	11/27/18	at Arkansas St.	L 63-74	719
3 POINT FG-ATT	88-269	94-286	12/01/18	ALABAMA A&M	L 53-59	762
3-point FG pct	.327	.329	12/11/18	at Illinois	L 52-84	986
3-pt FG made per game	5.9	6.3	12/13/18	BETHEL (TN)	w 86-50	432
FREE THROWS-ATT	218-291	165-235	12/18/18	SOUTHERN ILL.	L 59-65	0
Free throw pct	.749	.702	12/21/18	at Kentucky	L 49-88	4312
F-Throws made per game	14.5	11.0	12/28/18	at Tennessee	L 77-98	8518
REBOUNDS	595	553	* 01/03/19	MOREHEAD ST.	L 61-83	716
Rebounds per game	39.7	36.9	* 01/05/19	EASTERN KY.	w 81-63	2852
Rebounding margin	+2.8	-	* 01/10/19	at UT Martin	L 67-75	2921
ASSISTS	202	205	* 01-12-19	at Southeast Mo. St.	w 64-59	603
Assists per game	13.5	13.7				
TURNOVERS	263	230				
Turnovers per game	17.5	15.3				
Turnover margin	-2.2	-				
Assist/turnover ratio	0.8	0.9				
STEALS	122	131				
Steals per game	8.1	8.7				
BLOCKS	43	52				
Blocks per game	2.9	3.5				
ATTENDANCE	6733	18543				
Home games-Avg/Game	8-842	7-2649				
Neutral site-Avg/Game	-	0-0				

* - OVC game

Score by Periods	1st	2nd	3rd	4th	Totals
Murray St.	247	241	291	289	1068
Opponents	215	279	309	250	1053

2018-19 OVC STATISTICS

RECORD:	OVERALL	HOME	AWAY	NEUTRAL
ALL GAMES	2-2	1-1	1-1	0-0
CONFERENCE	2-2	1-1	1-1	0-0
NON-CONFERENCE	0-0	0-0	0-0	0-0

#	Player	gp-gs	min	avg	Total		3-Point		F-Throw		Rebounds											
					fg-fga	fg%	3fg-fga	3fg%	ft-fa	ft%	off	def	tot	avg	pf	dq	a	to	blk	stl	pts	avg
14	Adebayo, Evelyn	4-4	147	36.8	24-50	.480	5-8	.625	21-27	.778	9	34	43	10.8	9	0	5	19	4	3	74	18.5
05	Turley, Macey	4-4	135	33.8	19-35	.543	5-9	.556	17-19	.895	5	6	11	2.8	12	0	15	13	1	4	60	15.0
04	Mayes, Lex	4-4	135	33.8	10-32	.313	9-24	.375	7-8	.875	5	15	20	5.0	12	0	2	4	1	4	36	9.0
31	Crane, Brianna	4-4	110	27.5	9-29	.310	0-1	.000	10-16	.625	15	15	30	7.5	7	0	3	4	1	2	28	7.0
32	Burpo, Alexis	4-1	107	26.8	9-23	.391	2-10	.200	4-12	.333	9	15	24	6.0	11	0	9	8	2	4	24	6.0
00	Griffith-Wallace, J.	4-3	70	17.5	8-30	.267	2-11	.182	2-3	.667	1	8	9	2.3	6	0	7	10	0	2	20	5.0
20	Mack, Cekeya	4-0	42	10.5	6-10	.600	0-0	.000	4-8	.500	5	7	12	3.0	5	0	1	9	1	0	16	4.0
03	Outlaw, DeAsia	2-0	18	9.0	4-7	.571	0-1	.000	0-0	.000	0	2	2	1.0	2	0	1	4	0	0	8	4.0
33	Manley, Michaela	4-0	23	5.8	2-6	.333	1-4	.250	0-0	.000	2	0	2	0.5	0	0	2	1	0	2	5	1.3
02	Hill, Sadie	2-0	4	2.0	0-0	.000	0-0	.000	2-2	1.000	0	1	1	0.5	1	0	0	0	0	0	2	1.0
01	Blackburn, Raegan	3-0	7	2.3	0-0	.000	0-0	.000	0-0	.000	0	0	0	0.0	0	0	0	0	0	0	0	0.0
11	Barrett, Paige	2-0	2	1.0	0-0	.000	0-0	.000	0-0	.000	0	0	0	0.0	0	0	0	0	0	0	0	0.0
	Team										8	7	15				3					
	Total.....	4	800		91-222	.410	24-68	.353	67-95	.705	59	110	169	42.2	65	0	45	75	10	21	273	68.2
	Opponents.....	4	800		102-262	.389	28-88	.318	48-67	.716	60	86	146	36.5	75	-	54	42	20	31	280	70.0

TEAM STATISTICS	MUR	OPP	Date	Opponent	Score	Att.
SCORING	273	280	* 01/03/19	MOREHEAD ST.	L 61-83	716
Points per game	68.2	70.0	* 01/05/19	EASTERN KY.	w 81-63	2852
Scoring margin	-1.7	-	* 01/10/19	at UT Martin	L 67-75	2921
FIELD GOALS-ATT	91-222	102-262	* 01-12-19	at Southeast Mo. St.	w 64-59	603
Field goal pct	.410	.389	* - OVC game			
3 POINT FG-ATT	24-68	28-88				
3-point FG pct	.353	.318				
3-pt FG made per game	6.0	7.0				
FREE THROWS-ATT	67-95	48-67				
Free throw pct	.705	.716				
F-Throws made per game	16.8	12.0				
REBOUNDS	169	146				
Rebounds per game	42.2	36.5				
Rebounding margin	+5.8	-				
ASSISTS	45	54				
Assists per game	11.3	13.5				
TURNOVERS	75	42				
Turnovers per game	18.8	10.5				
Turnover margin	-8.2	-				
Assist/turnover ratio	0.6	1.3				
STEALS	21	31				
Steals per game	5.3	7.8				
BLOCKS	10	20				
Blocks per game	2.5	5.0				
ATTENDANCE	3568	3524				
Home games-Avg/Game	2-1784	2-1762				
Neutral site-Avg/Game	-	0-0				

Score by Periods	1st	2nd	3rd	4th	Totals
Murray St.	68	62	75	68	273
Opponents	71	63	73	73	280



**JANIKA
GRIFFITH-WALLACE**
G ■ 5-9 ■ So.
Brampton, Ontario



**REAGAN
BLACKBURN**
G ■ 5-8 ■ Fr.
Greenville, Ky.



**SADIE
HILL**
G/F ■ 6-0 ■ Fr.
Indianapolis, Ind



**DEASIA
OUTLAW**
G ■ 5-11 ■ Jr.
Henderson, Ky.



**LEX
MAYES**
G ■ 5-7 ■ Fr.
Murray, Ky.



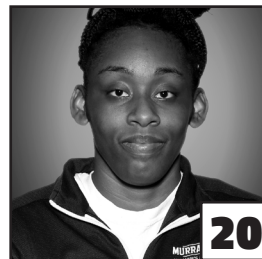
**MACEY
TURLEY**
G ■ 5-6 ■ Fr.
Murray, Ky.



**PAIGE
BARRETT**
G/F ■ 5-10 ■ So.
Scottsburg, Ind.



**EVELYN
ADEBAYO**
F ■ 6-0 ■ R-Jr.
London, England



**CEKEYA
MACK**
F ■ 6-1 ■ Jr.
Murray, Ky.



**BRIANNA
CRANE**
F ■ 6-0 ■ So.
Birmingham, Ala.



**ALEXIS
BURPO**
F/G ■ 5-10 ■ Fr.
Murray, Ky.



**MICHAELA
MANLEY**
G ■ 5-10 ■ Sr.
Benton, Ky.



**MACIE
GIBSON**
F ■ 6-1 ■ Fr.
Booneville, Ky.



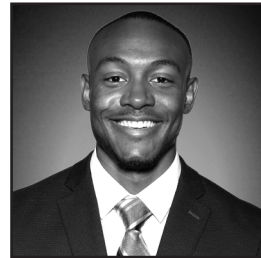
**RECHELLE
TURNER**
Head Coach
2nd Season



**MONICA
EVANS**
Assistant Coach
2nd Season



**AMBER
GUFFEY**
Assistant Coach
2nd Season



**JAUWAN
SCAIFE**
Assistant Coach
1st Season