



9-14 (5-7)

MURRAY ST. RACERS AT EASTERN KY./AUSTIN PEAY

Richmond, Ky. (McBrayer Arena)/Clarksville, Tenn. (Dunn Center)

Thur., Feb. 14 (5:30 p.m ET)/Sat., Feb. 16 (2 p.m.)

TV/Web: ESPN+

Live Audio: WBZB 104.5 FM (Thur.)/WNBS 1340 AM (Sat.)

(PxP - Jeremy Rose)

E
2-21 (0-12)



11-12 (6-6)

2018-19 SCHEDULE

Date	Opponent	Time /Result
11/1	#LINDSEY WILSON	W 72-51
11/7	EVANSVILLE	W 81-53
11/10	OAKLAND CITY	W 113-55
11/13	at Butler	L 65-86
11/20	LIPSCOMB	W 97-61
11/27	at Arkansas St.	L 63-74
12/1	ALABAMA A&M	L 53-59
12/11	at Illinois	L 52-84
12/13	BETHEL (TN)	W 86-50
12/18	SOUTHERN ILL.	L 59-65
12/21	at #18 Kentucky	L 49-88
12/28	at #10 Tennessee	L 77-98
1/3	*MOREHEAD ST.	L 61-83
1/5	*EASTERN KY.	W 81-63
1/10	*at UT Martin	L 67-75
1/12	*at Southeast Mo.	W 64-59
1/17	*at Eastern Ill.	L 67-75
1/19	*at SIUE	L 54-71
1/24	*BELMONT	L 58-65
1/26	*TENNESSEE ST.	L 61-65
1/31	*at Jacksonville St.	W 64-59
2/2	*at Tennessee Tech	L 65-74
2/7	*EASTERN ILLINOIS	W 60-51 ^{OT}
2/9	*SIUE	W 81-75
2/14	*at Eastern Ky.	4:30 p.m.
2/16	*at Austin Peay	2 p.m.
2/21	*UT MARTIN	5 p.m.
2/23	*SOUTHEAST MO.	5 p.m.
2/28	*at Morehead St.	4:05 p.m.
3/1	*AUSTIN PEAY	5 p.m.
3/6-9	OVC Tournament	TBD

* - OVC Contest

- Exhibition

2018-19 OVC STANDINGS

Team	OVC	Overall
Belmont	11-1	18-5
Morehead State	9-3	17-6
Tennessee Tech	9-3	18-7
UT Martin	8-4	16-7
Southeast Missouri	6-6	11-12
Austin Peay	6-6	11-12
Murray State	5-7	9-14
SIUE	5-7	10-13
Jacksonville State	5-7	11-12
Eastern Illinois	4-8	10-13
Tennessee State	4-8	4-20
Eastern Kentucky	0-12	2-21

As of Feb. 11, 2019

MURRAY STATE PROBABLE STARTERS

No.	Name	Pos.	GP/GS	FG%	3FG%	FT%	RPG	APG	PPG
0	Janika Griffith-Wallace	G	22/13	.338	.256	.717	3.2	2.3	9.5
4	Lex Mayes	G	23/23	.333	.360	.771	2.8	1.0	7.3
5	Macey Turley	G	23/23	.368	.311	.876	3.3	4.3	13.3
14	Evelyn Adebayo	F	23/23	.480	.386	.775	11.7	1.4	18.3
31	Brianna Crane	F	23/17	.478	.000	.700	5.3	0.8	7.3

Key Reserves

20	Cekeya Mack	F	23/3	.536	.000	.583	3.0	0.3	4.1
32	Alexis Burpo	F/G	23/10	.411	.235	.414	3.9	1.3	4.1
33	Michaela Manley	F	20/0	.317	.269	.833	0.6	0.5	1.9
Team			23	.407	.314	.738	40.3	12.5	68.6

EASTERN KENTUCKY PROBABLE STARTERS

No.	Name	Pos.	GP/GS	FG%	3FG%	FT%	RPG	APG	PPG
2	Terri Goddlett	G	21/17	.344	.234	.818	2.6	2.7	6.7
14	Shay Solomon	G	23/23	.396	.389	.625	6.2	3.4	10.7
15	Bria Bass	G/F	23/22	.343	.313	.667	6.2	1.2	10.1
30	Catie Kaifes	G	20/12	.307	.308	.750	5.8	1.6	7.6
25	Paige Murphy	F	19/5	.510	.409	.500	0.8	0.9	3.3
Team			23	.350	.283	.678	35.0	12.1	53.2

AUSTIN PEAY PROBABLE STARTERS

No.	Name	Pos.	GP/GS	FG%	3FG%	FT%	RPG	APG	PPG
2	Nieja Crawford	G	23/10	.374	.317	.692	5.5	1.4	7.8
4	Arielle Gonzalez-Varner	F	22/21	.514	.333	.638	7.7	1.4	12.1
22	Keisha Gregory	G	23/23	.406	.323	.914	4.9	2.8	13.1
23	Maggie Knowles	G/F	22/19	.457	.361	.696	4.1	0.6	6.7
33	Brandi Ferby	G	23/23	.370	.386	.730	1.8	2.7	7.9
Team			21	.380	.282	.640	40.9	13.2	60.7

2018-19 RECORD BREAKDOWN

	Record	Home	Away	Neutral	OT
Overall	9-14	7-5	2-9	0-0	0-0
OVC	5-7	3-3	2-4	0-0	0-0

SEASON STREAKS

Overall: Won 2 Home: Won 2 Away: Lost 1 Neutral: --- OT: ---

UPCOMING SCHEDULE

DATE	OPPONENT	SITE	TIME	WEB	RADIO
Feb. 21	UT Martin	Murray, Ky. (CFSB Center)	5 p.m.	ESPN+	1340 AM
Feb. 23	Southeast Missouri	Murray, Ky. (CFSB Center)	5 p.m.	ESPN+	1340 AM
Feb. 28	Morehead State	Morehead, Ky. (Johnson Arena)	4:05 p.m.	ESPN+	1340 AM
Mar. 2	Austin Peay	Murray, Ky. (CFSB Center)	5 p.m.	ESPN+	1340 AM

LAST TIME OUT

vs. Eastern Ill. (W 60-51)/vs. SIUE (W 81-75)

Feb. 7 & 9 at CFSB Center

MURRAY, Ky. - The Racers picked-up two key wins in the race to Evansville last week with a 60-51 overtime win over Eastern Illinois Thursday and a 81-75 win over SIUE Saturday. After a see-saw battle for the entire game Thursday, the Racers were able to get the win thanks in part to the free throw shooting of Macey Turley who went 4-for-4 in the final minute of regulation and 6-for-6 in overtime, where the Racers held the Panthers to just two points. Evelyn Adebayo pulled down a career-best 20 rebounds in the game to go with 12 points, while Janika Griffith-Wallace and Turley had 18 each. Saturday was another monster performance from Adebayo who scored 27 points and had 13 rebounds, while Turley followed with 20 points, fueled by another 10-for-10 performance at the free throw line.

THURSDAY'S OPPONENT:

at Eastern Kentucky Colonels


Feb. 14, 2019

5:30 p.m. ET

McBreyer Arena

SERIES HISTORY: Saturday will be the 91st all-time meeting between Murray State and Eastern Kentucky, with the Colonels holding a healthy 58-32 lead. The series has not been much kinder to the Racers in Richmond, where they trail, 13-26, despite winning the last three overall meetings.

SCOUTING REPORT: The Colonels have had a rough go of it this season and enter Thursday at 2-21 overall and winless in OVC play. Shooting 35.0 percent from the floor on the year, the Colonels are currently being outscored by an average of 17.5 points per game at 70.7 to 53.2. Abby Wright currently leads ECU at 11.9 points per game, while Shay Solomon follows at 10.7 to go along with a team-high 6.2 rebounds per game.

MURRAY STATE VS. EASTERN KENTUCKY				COLONELS - 58 WINS, RACERS - 32 WINS			
	<u>Eastern Kentucky Quick Facts</u>						
	Founded: 1909 Location: Richmond, Ky. Colors: Maroon & White Enrollment: 16,959			Conference: Ohio Valley Arena: McBreyer Arena (6,500) 2017-18 Rec.: 8-19 (5-13, 9th OVC) Postseason: None		Head Coach: Chrissy Roberts Alma Mater: Eastern Ky. '98 Overall Record (season): 122-188 (11th) EKU Record (season): Same	
<u>Last 3 vs. ECU:</u>	<u>Current Streaks vs. ECU:</u>			<u>All-Time vs. ECU:</u>		<u>MSU-EKU Series Misc.:</u>	
1/5/18 @MUR W 81-63	Overall: Won 3			Home: 18-28		First Meeting: 3/3/72 @MSU L 50-53	
2/27/18 @MUR W 75-68	Home: Won 3			Away: 13-26		Largest MSU Win: 2/25/89 @MSU W 101-63	
2/6/17 @MUR W 70-64	Away: Lost 3			Neutral: 1-4		Largest ECU Win: 2/11/96 @EKU L 41-89	

SATURDAY'S OPPONENT:

vs. Austin Peay Governors


Feb. 16, 2019

2 p.m.

Dunn Center

SERIES HISTORY: Arch rivals Murray State and Austin Peay will meet Saturday for the 98th time with the Racers clinging to a five game lead in the overall series at 51-46. Both teams have enjoyed a healthy advantage at home with the Racers leading 33-14 in Murray, while Austin Peay leads 30-17 in Clarksville. The games in the series have also been remarkably close with 41 of the 98 contests being decided by 10 points or less.

SCOUTING REPORT: The Governors will enter the weekend with an overall record of 11-12 and 6-6 in OVC action. Peay is currently outscoring their opponents by a margin of 1.8 points per game at 69.8 to 68.0. The Governors are currently shooting 39.8-percent from the floor, 32.2-percent from 3-point range and 75.1-percent from the free throw line. Keisha Gregory and Arielle Gonzalez-Varner currently lead the Gobs in scoring at 13.1 points and 12.1 points, respectively. Gonzalez-Varner also leads the team in rebounds at 7.7 per game, while Gregory leads in assists at 2.7 per game.

MURRAY STATE VS. AUSTIN PEAY		RACERS - 51 WINS, GOVERNORS - 46 WINS	
	<u>APSU Quick Facts</u>		
	Founded: 1927 Location: Clarksville, Tenn. Colors: Red & White Enrollment: 10,954	Conference: Ohio Valley Arena: Dunn Center (7,257) 2017-18 Rec.: 16-14 (9-9, 6th OVC) Postseason: L OVC QF	Head Coach: David Midlick Alma Mater: Ole Miss '91 Overall Record (season): 96-78 (6th) APSU Record (season): 51-62 (4th)
Last 3 vs. APSU: 2/24/18 @APSU L 69-75 OT 2/8/18 @MSU W 91-65 2/11/17 @MSU W 67-62	<u>Current Streaks vs. APSU:</u> Overall: Lost 1 Home: Won 6 Away: Lost 3	<u>All-Time vs. APSU:</u> Home: 33-14 Away: 17-30 Neutral: 1-2	<u>MSU-APSU Series Misc.:</u> First Meeting: 2/21/31 @MSU W 45-23 Largest MSU Win: 2/19/32 @MSU W 58-16 Largest APSU Win: 1/9/85 @APSU L 59-89

2018-19 MURRAY STATE ROSTER

No.	Player	Pos.	Ht.	Yr.	Hometown (Previous School)
0	Janika Griffith-Wallace	G	5-9	So.	Brampton, Ontario (Tech Academy at Sault Ste Marie)
1	Raegan Blackburn	G	5-8	Fr.	Greenville, Ky. (Muhlenberg County HS)
2	Sadie Hill	F/G	6-0	Fr.	Indianapolis, Ind. (Perry Meridian HS)
4	Lex Mayes	G	5-7	Fr.	Murray, Ky. (Murray HS)
5	Macey Turley	G	5-6	Fr.	Murray, Ky. (Murray HS)
11	Paige Barrett	G/F	5-10	So.	Scottsburg, Ind. (Scottsburg HS)
14	Evelyn Adebayo	F	6-0	Jr.	London, England (Gardner-Webb)
20	Cekeya Mack	F	6-0	Jr.	Albany, Ga. (Albany Tech)
31	Brianna Crane	F	6-0	So.	Birmingham, Ala. (Ramsay HS)
32	Alexis Burpo	F/G	5-10	Fr.	Murray, Ky. (Murray HS)
33	Michaela Manley	G	5-10	Sr.	Benton, Ky. (Marshall County HS)
44	Macie Gibson	F	6-1	Fr.	Booneville, Ky. (Owsley County HS)

Head Coach: Rechelle Turner (Murray St., 1996), 2nd Season

Assistant Coaches: Amber Guffey (Murray St., 2009), 2nd Season;
Jauwan Scaife (Ball St., 2012), 1st Season; Monica Evans, 2nd Season

PRONUNCIATION GUIDE

JANIKA Griffith-Wallace.....Juh-nee-kuh
 Evelyn ADEBAYO.....Add-uh-buy-oh
 CEKEYA Mack.....Suh-key-uh
 RECHELLE TurnerRuh-shell
 JAUWAN SCAIFE.....Juh-wahn Scayf

HOW THEY RANK - TEAM

Statistic	Team	National Rank	Conference Rank	Value	National Leader	Value
Assist Turnover Ratio (349 ranked)	Austin Peay Murray St. Eastern Ky.	165 234 257	6 8 9	0.84 0.72 0.69	Oregon	1.91
Assists (349 ranked)	Murray St. Austin Peay Eastern Ky.	196 212 222	7 8 9	287 282 278	Iowa	534
Assists Per Game (349 ranked)	Murray St. Austin Peay Eastern Ky.	217 228 239	7 8 9	12.5 12.3 12.1	Baylor	23.5
Blocked Shots (349 ranked)	Murray St. Eastern Ky. Austin Peay	243 322 342	9 11 12	59 42 27	Baylor	152
Blocked Shots Per Game (349 ranked)	Murray St. Eastern Ky. Austin Peay	254 326 343	9 11 12	2.6 1.8 1.2	Baylor	6.9
Defensive Rebounds per Game (30 ranked)					Baylor	33
Fewest Fouls (345 ranked)	Murray St. Eastern Ky. Austin Peay	101 260 307	2 5 7	369 431 451	Penn	231
Fewest Turnovers (349 ranked)	Austin Peay Murray St. Eastern Ky.	108 263 266	2 9 10	337 400 401	Wyoming	221
Field-Goal Percentage (349 ranked)	Murray St. Austin Peay Eastern Ky.	144 184 327	6 8 10	40.7 39.8 35.0	Oregon	52.6
Field-Goal Percentage Defense (349 ranked)	Murray St. Eastern Ky. Austin Peay	211 295 340	7 9 12	40.4 42.7 45.3	Baylor	31.9
Free Throw Attempts (349 ranked)	Murray St. Austin Peay Eastern Ky.	48 50 348	5 6 12	462 458 230	Arkansas St.	588
Free Throws Made (349 ranked)	Austin Peay Murray St. Eastern Ky.	22 23 347	4 5 12	344 341 156	Notre Dame	420
Free-Throw Percentage (349 ranked)	Austin Peay Murray St. Eastern Ky.	32 52 224	2 4 6	75.1 73.8 67.8	Fresno St.	79.3
Offensive Rebounds per Game (30 ranked)					Troy	22
Personal Fouls Per Game (349 ranked)	Murray St. Eastern Ky. Austin Peay	92 256 287	2 5 8	16.0 18.7 19.6	UConn	11.8
Rebound Margin (349 ranked)	Murray St. Austin Peay Eastern Ky.	99 207 305	3 8 12	3.3 -0.5 -5.3	Baylor	16.8
Rebounds (349 ranked)	Murray St. Eastern Ky. Austin Peay	64 246 260	4 11 12	927 806 797	Miami (FL)	1,122
Rebounds Per Game (349 ranked)	Murray St. Eastern Ky. Austin Peay	66 283 294	4 11 12	40.30 35.04 34.65	Troy	50.59
Scoring Defense (349 ranked)	Austin Peay Murray St. Eastern Ky.	253 269 302	8 9 10	68.0 69.0 70.7	Drexel	48.1
Scoring Margin (349 ranked)	Austin Peay Murray St. Eastern Ky.	165 197 342	6 8 12	1.8 -0.4 -17.5	Mississippi St.	33.6
Scoring Offense (349 ranked)	Austin Peay Murray St. Eastern Ky.	93 106 342	5 6 12	69.8 68.6 53.2	Oregon	90.2
Steals (349 ranked)	Austin Peay Murray St. Eastern Ky.	144 222 280	7 8 11	186 163 142	Lamar University	336
Steals Per Game (349 ranked)	Austin Peay Murray St. Eastern Ky.	151 236 295	7 8 11	8.1 7.1 6.2	Lamar University	15.3
Three Pt FG Defense (349 ranked)	Murray St. Eastern Ky. Austin Peay	104 127 296	6 7 11	29.9 30.3 34.0	VCU	22.3
Three-Point Field Goals Attempted (150 ranked)	Austin Peay Eastern Ky.	36 72	2 3	566 515	DePaul	827
Three-Point Field Goals Made (349 ranked)	Austin Peay Eastern Ky. Murray St.	45 130 176	2 7 8	182 146 133	DePaul	279
Three-Point Field Goals Per Game (349 ranked)	Austin Peay Eastern Ky. Murray St.	52 137 184	2 6 8	7.9 6.3 5.8	Idaho	11.7
Three-Point Field-Goal Percentage (349 ranked)	Austin Peay Murray St. Eastern Ky.	137 165 287	5 6 10	32.2 31.4 28.3	Oregon	43.8

HOW THEY RANK - TEAM

Turnover Margin (349 ranked)	Austin Peay	57	4	2.87	Lamar University	10.18
	Murray St.	307	11	-3.22		
	Eastern Ky.	336	12	-4.87		
Turnovers Forced (349 ranked)	Austin Peay	99	6	17.52	Lamar University	25.14
	Murray St.	285	10	14.17		
	Eastern Ky.	332	12	12.57		
Turnovers Per Game (349 ranked)	Austin Peay	94	3	14.7	Oregon	10.5
	Murray St.	246	9	17.4		
	Eastern Ky.	248	10	17.4		
Won-Lost Percentage (349 ranked)	Austin Peay	186	6	47.8	Oregon Louisville	95.8 95.8
	Murray St.	246	10	39.1		
	Eastern Ky.	345	12	8.7		

HOW THEY RANK - INDIVIDUAL

Statistic	Player	National Rank	Conference Rank	Value	National Leader	Value
Assist Turnover Ratio (250 ranked)	Macey Turley, Murray St.	232	10	1.32	Jazzmun Holmes, Mississippi St.	4.58
Assists (150 ranked)	Macey Turley, Murray St.	101	3	100	Sabrina Ionescu, Oregon	196
Assists Per Game (249 ranked)	Macey Turley, Murray St. Shay Solomon, Eastern Ky.	112 242	3 10	4.3 3.4	Tiana Mangakahia, Syracuse	8.2
Blocked Shots (140 ranked)					Channon Fluker, CSUN	83
Blocked Shots Per Game (244 ranked)					Channon Fluker, CSUN	3.61
Defensive Rebounds per Game (30 ranked)	Evelyn Adebayo, Murray St.	4	1	9	Kristine Anigwe, California	10
Double Doubles (44 ranked)	Evelyn Adebayo, Murray St.	8	1	15	Kristine Anigwe, California	23
Field Goal Attempts (149 ranked)	Evelyn Adebayo, Murray St.	145	4	300	Kierra Anthony, Louisiana Tech	440
Field Goals Made (149 ranked)	Evelyn Adebayo, Murray St.	86	3	144	Megan Gustafson, Iowa	276
Field-Goal Percentage (250 ranked)	Evelyn Adebayo, Murray St.	110	2	48.0	Ruthy Hebard, Oregon	71.0
Final Points (199 ranked)	Evelyn Adebayo, Murray St.	53	3	420	Megan Gustafson, Iowa	655
Free Throw Attempts (147 ranked)	Evelyn Adebayo, Murray St. Keisha Gregory, Austin Peay	25 141	2 4	142 105	Kristine Anigwe, California	200
Free Throws Made (149 ranked)	Evelyn Adebayo, Murray St. Keisha Gregory, Austin Peay Macey Turley, Murray St.	22 52 122	2 3 5	110 96 78	Cierra Dillard, Buffalo Lexi Klabo, North Dakota	146 146
Free-Throw Percentage (248 ranked)	Keisha Gregory, Austin Peay Macey Turley, Murray St. Evelyn Adebayo, Murray St.	9 22 174	1 2 7	91.4 87.6 77.5	Rebekah Hand, Marist	93.8
Minutes Played (150 ranked)	Macey Turley, Murray St. Evelyn Adebayo, Murray St.	142 146	2 3	782:23 778:55	Karissa McLaughlin, Purdue	967:46
Minutes Played Per Game (150 ranked)					Lauren Holden, Fordham	38.66
Offensive Rebounds per Game (30 ranked)					Teaira McCowan, Mississippi St.	6
Points Per Game (249 ranked)	Evelyn Adebayo, Murray St.	57	1	18.3	Megan Gustafson, Iowa	27.3
Rebounds (150 ranked)	Evelyn Adebayo, Murray St.	9	1	270	Kristine Anigwe, California	364
Rebounds Per Game (246 ranked)	Evelyn Adebayo, Murray St. Arielle Gonzalez-Varner, Austin Peay	12 159	1 7	11.7 7.7	Kristine Anigwe, California	15.8
Steals (150 ranked)					Chastadie Barrs, Lamar University	129
Steals Per Game (250 ranked)					Chastadie Barrs, Lamar University	5.86
Three-Point Field Goals Attempted (147 ranked)					Taylor Pierce, Idaho	227
Three-Point Field Goals Made (145 ranked)					Taylor Pierce, Idaho	96
Three-Point Field Goals Per Game (248 ranked)					Taylor Pierce, Idaho	4.57
Three-Point Field-Goal Percentage (198 ranked)					Marta Gomez, Wyoming	49.1
Triple Doubles (6 ranked)					Sabrina Ionescu, Oregon	6

THE INSIDE TRACK

GAME 22-23 NOTES - EKU & APSU

A WIN THURSDAY WOULD...

Give the Racers a three-game win streak for the first time since the 2016-17 season.

A WIN SATURDAY WOULD...

Potentially vault the Racers into fifth place in the OVC standings, depending on results of Thursday's games by the Racers and Gobs and Thursday and Saturday's games by SEMO.

BATTLE OF THE BORDER

Saturday is the Racers' first of two Heritage Bank Battle of the Border matchup. The Heritage Bank Battle of the Border is an all-sports competition between Murray State and Austin Peay. Through the fall, the Racers currently lead this year's standings, 12-6.

CHASING THE DUB

Evelyn Adebayo currently has 15 double-doubles this season, including one in each of her last three games. Her 15 this season currently places her fifth on the MSU single-season list with 6 regular-season games to play.

#	Player	Seas.	D-Ds
1.	Karen Hubert-Price	83-84	16
	Stephanine Minor	94-95	16
	Stephanine Minor	95-96	16
	Stephanine Minor	96-97	16
5.	Fondeolyn Garner	91-92	15
	Evelyn Adebayo	18-19	15
7.	Michelle Wenning	90-91	14
	Ashley N. Hayes	08-09	14
9.	Monika Gadson	99-00	13
10.	Geralyn Ferth	85-86	11
	Michelle Wenning	88-89	11
	Ke'Shunan James	17-18	11

MACEY ICE

Macey Turley went 10-for-10 from the free throw line in both games last week, giving her 25 consecutive made free throws. The streak is currently the fifth longest in program history.

#	Player	Dates	FTs
1.	Paige Guffey	11/14/08-12/19/08	44
2.	Amber Guffey	12/18/05-1/130/06	31
3.	Melissa Huffman	1/28/89-1/14/90	29
4.	Mariah Robinson	11/12/13-11/29/13	27
5	Macey Turley	1/31/19-Pr.	25

AWARD ROUNDUP

For the second time this season, Evelyn Adebayo and Macey Turley swept the weekly OVC awards. In addition, Adebayo also was named as the National Mid-Major Player of the Week by College Sports Madness. For Adebayo, it was her third Player of the Week honors and her ninth Newcomer nod. For Turley, it was the sixth time this season that she has been named as the Freshman of the Week.

OK, WHAT'S NEXT?

The Racers return home for two games next week against UT Martin Thursday and SEMO Saturday.

GAME 22-23 NOTES - EIU & SIUE

A WIN THURSDAY WOULD...

Put Murray State ahead of EIU in the standings. Depending on results of other games, it could put them in the all-important 8th position.

A WIN SATURDAY WOULD...

Snap a five-game losing streak to SIUE at the CFSB Center. After winning the first four games of the series at home, the Racers have not won at home against the Panthers since 2013.

EIGHT IS GREAT

For the eighth time this season and fourth consecutive week, Evelyn Adebayo was named as the OVC Newcomer of the Week. The redshirt-junior averaged a double-double for the fifth straight week with her 13th double-double of the season at Tennessee Tech. She also grabbed a 15 rebounds in a win over Jacksonville State.

20-POINT CLUB

The Racers only had two players all season reach 20 points in a game, but they doubled that against Jacksonville State. Janika Griffith-Wallace had 25 and Brianna Crane had 20 points in the win, joining Evelyn Adebayo and Macey Turley, who have scored 20+ points on multiple occasions.

GAME 20-21 NOTES - JSU & TTU

A WIN THURSDAY WOULD...

Put an end to a four-game skid by the Racers, which is currently tied for the longest of the season.

A WIN SATURDAY WOULD...

Give the Racers three straight wins over Tennessee Tech, marking the first time MSU has won 3-plus games over the Golden Eagles since a six-game streak from 2007-2010.

LUCKY NUMBER SEVEN

For the seventh time this season, Evelyn Adebayo was named as the OVC Newcomer of the Week. The transfer had 20 points and 11 rebounds against Belmont Thursday and followed that with 16 points and a career-high 18 rebounds against TSU Saturday.

GAME 18-19 NOTES - BEL & TSU

A WIN THURSDAY WOULD...

Give the Racers their first win over Belmont in nine games and would be the first win over the Bruins with both schools being in the OVC.

HONORED AGAIN

For the second week in a row, Evelyn Adebayo and Macey Turley swept the OVC Newcomer and Freshman of the Week awards, respectively. Adebayo averaged a double-double for the second third straight week with her ninth and tenth double-doubles of the season. Turley led the team with 18.0 points per game, making seven threes in the two games. She also pulled down a career-high seven rebounds at SIUE.

ACROSS STATE LINES

Despite Kentucky and Tennessee bordering each other, Murray State has no players from Tennessee while Belmont has none from Kentucky. Tennessee State only has one player that calls Kentucky home, Asia Sims who hails from Paris, Kentucky.

GAME 16-17 NOTES - EIU & SIUE

A WIN THURSDAY WOULD...

Give the Racers their first back-to-back road wins since 2016-17. A weekend sweep would give MSU its first three-game road winning streak since 2012-13 season, when it won four in a row.

STOCKPILING

Evelyn Adebayo picked up her fifth Newcomer of the Week honor Tuesday, while Macey Turley received her fourth Freshman of the Week honor. Adebayo average a double-double over two games, while Turley averaged 21.5 including 32 at SEMO.

THE INSIDE TRACK

A NEW MEMBER

With 32 points at SEMO, Macey Turley became just the fifth Murray State freshman to score at least 30 points in a single game Saturday.

Name	Opp. (Date)	Pts.
Rona Poe	SIUE (12/16/85)	34
Sheila Smith	YSU (1/18/86)	34
Lori Trumblee	BUT (11/30/02)	32
Macey Turley	SEMO (1/12/19)	32
Sheila Smith	EKU (1/25/86)	31
Ke'Shunnan James	APSU (2/7/15)	31

BASKETBALL ON YOUR LUNCH BREAK

This week the Racers will play two afternoon games including a rare weekday OVC matinee. MSU has played two game this season that started before 4 p.m. and went 1-1. The Racers fell against Kentucky in December a Noon Eastern tip, but were victorious last Saturday at SEMO with a 2 p.m. start.

GAME 14-15 NOTES - UTM & SEMO

A WIN IN EITHER GAME WOULD...

Give the Racers their first win at UT Martin in six years and the first at SEMO in eight years.

REUNION

Thursday will be a reunion of sorts for head coach Rechele Turner and players Lex Mayes, Macey Turley and Alexis Burpo. It will mark the first time that they have been on the court with former player/teammate Maddie Waldrop since the latter graduated from Murray High two years ago.

ADDING UP

With 25 points and 11 rebounds Evelyn Adebayo tallied her sixth double-double of the season. She currently leads the Racers with 18.5 points and 9.9 rebounds per game.

WORKING THE LINE

Thursday will be a battle of the two best free-throw shooting teams in the OVC. UT Martin currently leads the league at 76.8 percent, while the Racers follow at 76.2.

GAME 12-13 NOTES - MOR & ECU

A WIN THURSDAY WOULD...

Put an end to a three-game skid by the Racers. Murray State has lost its last three game with its last win coming against Bethel on Dec. 13.

THE SECOND SEASON

The Racers are 21-20 all-time in OVC openers and are 15-7 in those game when they are played in Murray. MSU has won its last three OVC openers and 5-4 all-time in conference lid lifters against Morehead State.

KEEP 'EM COMIN'

On Monday, Evelyn Adebayo won her second OVC Player of the Week award and fourth Newcomer of the Week honor. The junior had a career-high 28 at No. 10 Tennessee and went 7-for-7 at the free throw line.

IT'S A SMALL, SMALL WORLD

Both Murray State's Janika Griffith-Wallace and Morehead State's Georgia Campbell hail from the Toronto suburb of Brampton in Canada, while the Racers' DeAsia Outlaw and the Eagles' Ashley Moore played junior college ball together at Wabash Valley.

GAME 11 NOTES - UT

A WIN FRIDAY WOULD...

Give MSU its first win over an SEC team since 1980, when the Racers defeated Vanderbilt. Currently, MSU is 6-35 against the South-eastern Conference.

MORE HARDWARE

For the third time this season, Evelyn Adebayo was named as the OVC Newcomer of the Week. Over two games, she averaged 18.5 points and 8.5 rebounds.

ROLE REVERSAL

The Lady Vols are currently ranked 48th out of 349 teams in Division I when it comes to getting to the free throw line. However, when they get there they have trouble, shooting just 67.1 percent and ranking 209th. Conversely, MSU is the 28th best free throw shooting team in the country at 75.7 percent, but they have trouble getting to the line, ranking 231st in attempts at just 17.3 per game

GAME 10 NOTES - UK

GETTING IT DONE

Despite using just two bench players Tuesday against SIU, the Racer reserves still outscored their SIU counterparts 18-9, despite the Salukis using three more players. Brianna Crane dumped in 13 points, while Alexis Burpo added six.

THE KEY

One thing has separated the Racer wins from losses this season on the stat sheet and that is field-goal percentage. MSU is 4-0 when outshooting their opponents and 0-5 when being outshot.

GAME 9 NOTES - SIU

A WIN TUESDAY WOULD...

Give the Racers a much-needed boots of momentum as they head into arguably their two toughest games of the season; at No. 18 Kentucky On Dec. 22 and at No. 9 Tennessee on Dec. 28.

A CLEAN SWEEP

Evelyn Adebayo and Macey Turley swept the weekly OVC awards for the Racers Tuesday with Adebayo being named both Player and Newcomer and Turley earning the Freshman nod. Adebayo notched a double-double in both games last week to average 22.0 point and 13.0 rebounds, while Turley averaged 14.0 points and 5.0 assists.

LEADING THE WAY

Evelyn Adebayo has had the most points and rebounds, either by herself or shared, in every game for the Racers this season. Already with five double-doubles in eight games, the transfer is averaging 17.6 point and 10.8 rebounds per game.

WELCOME BACK

For the first time since her departure following the 2007-08 season, Jody Adams returns to the CFSB Center, this time as an assistant coach for SIU. Adams coached one season at the Bank, guiding the Racers to a 24-8 mark, an OVC tournament title and the program's first trip to the NCAA Tournament. Current Racer assistant Amber Guffey was a member Adams' championship squad.

GAME 8 NOTES - BET

A WIN THURSDAY WOULD...

Snap a three-game skid by the Racers which includes losses at Arkansas State and Illinois and at home against Alabama A&M.

FOUR & COUNTING

Evelyn Adebayo notched her fourth double-double of the season at Illinois with a career-high 23 points and 13 rebounds, which tied her previous career best.

THE INSIDE TRACK

BEST BEHAVIOR

The Racers continue to be one of the most disciplined teams in the nation as they have committed the sixth fewest fouls in the country. The Racers currently have 101 fouls on the season, while leader Montana has 94. at the CFSB Center in 2018.

GAME 7 NOTES - ILL

A WIN TUESDAY WOULD...

Give the Racers their first win over a Big Ten program. MSU is currently 0-4 against the power five league going with two losses against Indiana and one each against Purdue and Illinois.

DOIN' WORK

Through the first six games this season, Evelyn Adebayo has had three double-doubles. She is currently averaging 16.2 points and 10.0 rebounds per game placing her fourth and second in each category, respectively.

GAME 6 NOTES - AAMU

A WIN SATURDAY WOULD...

Give the Racers just their third 4-0 start at home since 2008-09. The only other previous time the Racer won their first four at The Bank was two seasons ago in 2016-17.

MOVIN' ON UP

With their 18-for-20 performance at the charity stripe Tuesday at Arkansas State, the Racers skyrocketed from 10th to 4th nationally in free throw percentage. MSU is currently shooting 82.2 percent from the free throw line, while DePaul leads the nation at 85.0.

DANGEROUS FROM DOWNTOWN

As a team, Murray State currently has the seventh best three-point shooting percentage in the nation at 41.8 and the nation's 12th-best three-point shooter in Lex Mayes, who is making 55.2-percent of her three-point attempts. St. Francis Brooklyn currently paces the nation in team percentage at 44.4, while Shalexus Aaron leads individually at 72.7 percent.

BEASTS UNDERNEATH

The Racers currently lead the OVC in both rebounds per game and rebound margin. MSU currently averages 43.0 boards per game, while outrebounding their opponents by an average of 9.6 rebounds per game. Those numbers currently place the Racers 47th nationally in rebounds per game and 27th in rebound margin.

GAME 5 NOTES - ASU

A WIN TUESDAY WOULD...

Give the Racers their first win over a program that sponsors FBS football since 2012 when they defeated Ball State at home, 63-53.

RANK AND FILE

Murray State currently ranks in the top 10 nationally in three separate categories. They are 10th in free throw percentage at 80.0, eighth in scoring offense at 89.0 and fifth in fewest fouls at 54.

EIGHT IS GREAT

In three of their four games this season, the Racers have limited their opponents to just eight points in the opening stanza. They did so against Evansville, Oakland City and Lipscomb and went 3-0 in those contests.

THREE FOR ALL

Macey Turley kept Murray State's streak of winning a weekly award alive Tuesday when she was named as the OVC Freshman of the Week for the second time this season.

A FRIENDLY FACE

Arkansas State assistant Todd Buchanan is no stranger to the Racers, as he is a 1995 graduate of Murray State. In addition to his time as a student at Murray State, Buchanan served as an assistant for the Racer women from 1992-1995 and also coached at three local high schools; Lyon County, Calloway County and Murray.

GAME 4 NOTES - LIP

A WIN TUESDAY WOULD...

Give the Racers their first three-game win-streak at home since 2016-17 when they posted wins over MacMurray, Tennessee State and Eastern Illinois (Dec. 12 -Jan. 11).

BACK-TO-BACK

Although she did come up just short of her third straight double-double against Butler, Evelyn Adebayo was named as the OVC Newcomer of the Week, giving the Racers a weekly winner in each of the first two weeks of the season. Macey Turley was the first winner for Murray State, taking home freshman honors last week.

TURNOVER TROUBLE

The Racers committed a season-high 23 turnovers against Butler, leading directly to 27 points for the Bulldogs. The game also marked the first-time this year that MSU had finished a game with more turnovers than assists (11).

GAME 3 NOTES - BUT

DOUBLE YOUR FUN

For the second time in as many games, Evelyn Adebayo notched a double-double. Through two games this season she is averaging 18.0 points per game and 11.5 rebounds.

BIG NUMBERS

The Racers scored 113 points against Oakland City Saturday for the fourth most points in school single-game history. In addition, the Racers' 40-made field goals is the 11th most in program history.

SPREADING THE LOVE

All 12 eligible players played for the Racers with 11 of them tallying points. Of the 11 players that scored in the game, seven reached double digits.

GAME 2 NOTES - OAK

OPENING STATEMENT

MSU's win Wednesday was the first in a season opener against a Division I team since beating the Purple Aces to start the 2011-12 season, as well as the largest margin of victory against any Division I opponents since a 32 point win over Alabama A&M in 2016-17.

HISTORIC DEBUT

With game-highs of 18 points and 10 rebounds, Evelyn Adebayo became the first known Racer to debut with a double-double (single-game records dating back to 1997-98) Wednesday versus Evansville.

QUICK TURNAROUND

In Wednesday's opener, the Racers addressed two areas of concerns from the exhibition Thursday night, three-point and free throw shooting. The Racers were just 1-for-13 (7.7%) from three and 19-for-35 (54.3%) in their lone exhibition. However, on Wednesday, MSU was 7-for-10 (70.0%) from the stripe and 10-for-20 (50.0 %) from beyond the arc.

GAME 1 NOTES - UE

LIFTING THE LID

Murray State opens its 52nd season of women's basketball Wednesday and is 22-30 all-time in season openers and 26-23 in home openers. The Racers are 4-4 all-time against UE in season openers and 3-3 against the Purple Aces in home openers.

THE INSIDE TRACK

SHAKING THE DUST OFF

The Racers won their only exhibition of the year last Thursday, 72-51 over Lindsey Wilson. After sitting out last season due to NCAA transfer rules, Evelyn Adebayo easily got back in the groove and led MSU with 21 points, while Janika Griffith-Wallace posted a double-double with 13 points and 11 rebounds.

NEXT ONE UP

The Racers return just 20.4 percent of their scoring from last year with the most notable loss being the 2017-18 OVC Player of the Year, Ke'Shunnan James. Brianna Crane will lead all returners this season after averaging 7.2 points and 5.7 rebounds per game last season.

HEAD COACH RECEHELLE TURNER

2ND SEASON AT MSU/2ND SEASON OVERALL

TURNER'S CAREER YEAR-BY-YEAR COACHING RECORD

Year	Team	OVERALL			OVC			POSTSEASON		
		W	L	Pct.	W	L	Pct.	W	L	Pct.
2017-18	Murray St.	11	19	.367	7	11	.389	0	1	.000
2018-19	Murray St.	9	14	.391	5	7	.417	-	-	.000
TOTAL		20	33	.377	12	18	.357	0	0	.000
OT		1	1	.500	1	1	.500	0	0	.000

TURNER VS. THE COMPETITION

OPPONENT	RECORD	OPPONENT	RECORD
Austin Peay*	1-1	Lipscomb	1-1
Alabama	1-0	Louisville	0-1
Alabama A&M	0-2	Mississippi Valley St.	1-0
Arkansas St.	0-1	Morehead St.*	0-2
Belmont*	0-3	UNC Greensboro	1-0
Bethel (TN)	2-0	Oakland City	1-0
Butler	0-2	Northern Kentucky	1-0
Evansville	1-1	Southern Illinois	0-1
ETSU	0-1	SIUE*	1-3
Eastern Illinois*	3-1	Southeast Missouri*	1-2
Eastern Kentucky*	2-0	Tennessee	0-1
Illinois	0-1	Tennessee State*	1-1
Jacksonville State*	0-3	Tennessee Tech*	2-1
Kentucky	0-1	UT Martin*	1-2

2018 Opponents Listed In BOLD

*Indicates OVC Opponent

THE RACERS ARE....

9-14	...Overall	5-10	...Bench outscored by Opp. bench	3-2	...in November
5-7	...vs. OVC		...Tied, bench scoring	1-5	...in December
4-7	...vs. Non-Conference	9-7	...Outrebound Opponent	3-6	...in January
		0-7	...Outrebounded by Opponent	2-1	...in February
			...Tied, rebounds		...in March
		8-6	...More FTM than Opponent		
9-3	...Leading at Half	1-7	...Less FTM than Opponent		...on Mondays
0-11	...Trailing at Half	0-1	...Tied, FTM	1-4	...on Tuesdays
	...Tied at Half	7-2	...More 3FGM than Opponent	1-0	...on Wednesdays
	...In Overtime	2-11	...Less 3FGM than Opponent	3-4	...on Thursdays
8-3	...Outshoot Opponent (%)	0-1	...Tied, 3FGM	0-2	...on Fridays
1-11	...Outshot by Opponent (%)	5-11	...More turnovers than Opponent	4-4	...on Saturdays
	...Tied opponent, shooting (%)	4-2	...Less turnovers than Opponent		...on Sundays
7-5	...Shoot .400 or better		...Tied, turnovers		
2-9	...Shoot under .400	1-6	...Score ≤ 60	2-3	...in the Afternoon (Before 4 p.m.)
0-7	...Opponent shoot .400 or better	6-1	...Score 75+	7-11	...in the Evenings (4 p.m. or After)
9-7	...Opponent shoot under .400	6-1	...Opponents Score ≤ 60		
4-4	...Bench outscores Opp. bench	1-7	...Opponents Score 75+		

2018-19 SCORE BY QUARTERS

	1st Qtr.	2nd Qtr.	3rd Qtr.	4th Qtr.	OT	Total
Murray St.	383	348	419	417	11	1578
Avg.	16.7	15.1	18.2	18.1	11.0	68.6
Opponents	341	403	451	391	2	1588
Avg.	14.8	17.5	19.6	17.0	2.0	69.0

BENCH SCORING

RACERS	OPPONENTS
Season Avg.: 16.3	Season Avg.: 25.3
Team High: 60 (OCU, 11/10)	Team High: 45 (TTU, 2/2)
Team Low: 0 (JSU, 1/31)	Team Low: 5 (BEL, 1/24)
Individual High: 14 - Mayes (SIUE, 2/9)	Individual High: 31 - Outlow (TSU, 1/26)

2018 WON-LOST MARGINS

Margin	1	2	3	4	5	6	7	8	9	10	11	12	13	14	15
Won By					2	1			1						
Lost By				1		2	1	2	1		1				
Margin	16	17	18	19	20	21	22	23	24	25	26	27	28	29	30+
Won By			1										1		3
Lost By		1				2	1								2

2018-19 TEAM HIGHS & LOWS - RACERS

CATEGORY	HIGH	LOW
Total Points	113 - OCU, 11/10	49 - UK, 12/21
Points In A Quarter	33 - [3rd, 4th] OCU, 11/10	6 - [2nd] AAMU, 12/1; [1st] ILL, 12/11
Overtime Points	---	---
FG Made	40 - OCU, 11/10	17 - SIUE, 1/19
FG Attempted	79 - OCU, 11/10	46 - SEMO, 1/12
FG%	51.5 - BET, 12/13	27.1 - ILL, 12/11
3PT FG Made	14 - LIP, 11/20	0 - AAMU, 12/1
3PT FG Attempted	26 - 5 Times	8 - TTU, 2/2
3PT FG%	57.1 - SEMO, 1/12	0.0 - AAMU, 12/1
FT Made	28 - OCU, 11/10	7 - UE, 11/7; UK, 12/21
FT Attempted	34 - OCU, 11/10	10 - UE, 11/7; BUT, 11/13
FT%	90.0 - ASU, 11/27	50.0 - UK, 12/21
Rebounds	57 - OCU, 11/10	24 - UT, 12/28
Offensive Rebounds	21 - EIU, 2/7	6 - UT, 12/28
Defensive Rebounds	40 - BET, 12/13	18 - UT, 12/28
Assists	23 - OCU, 11/10	7 - SIU, 12/18; JSU 1/31
Steals	24 - OCU, 11/10	2 - SIUE, 1/19
Turnovers	27 - UK, 12/21	8 - BEL, 1/24
Blocked Shots	5 - LIP, 11/20	1 - 5 Times
Assist/Turnover Ratio	2.5 - LIP, 11/20	0.4 - SIU, 12/18
Fouls	25 - ASU, 11/27	9 - ILL, 12/11

2018-19 TEAM HIGHS & LOWS - OPPONENTS

CATEGORY	HIGH	LOW
Total Points	98 - UT, 12/28	50 - BET, 12/13
Points In A Quarter	35 - [3rd] UT, 12/28	3 - [1st] BET, 12/13
Overtime Points	---	---
FG Made	41 - UT, 12/28	13 - BET, 12/13
FG Attempted	81 - UT, 12/28	55 - SIU, 12/18; EIU, 1/17
FG%	56.5 - ILL, 12/11	22.4 - BET, 12/13
3PT FG Made	11 - MOR, 1/3	1 - TSU, 1/26
3PT FG Attempted	28 - BEL, 1/24	10 - AAMU, 12/1
3PT FG%	47.6 - UK, 12/21	8.3 - TSU, 1/26
FT Made	22 - TSU, 1/26	5 - JSU, 1/31
FT Attempted	30 - ASU, 11/27	8 - UE, 11/7; JSU, 1/31
FT%	90.9 - SIU, 12/18	56.3 - UT, 12/28
Rebounds	56 - UT, 12/28	27 - OCU, 11/10; SIU, 12/18
Offensive Rebounds	25 - UT, 12/28	5 - SIU, 12/18
Defensive Rebounds	34 - AAMU, 12/1; BEL, 1/24	17 - SEMO, 1/12
Assists	23 - ILL, 12/11	6 - UE, 11/7; BET, 12/13
Steals	17 - BUT, 11/13	1 - BEL, 1/24
Turnovers	32 - OCU, 11/10	7 - MOR, 1/3
Blocked Shots	8 - ILL, 12/11	0 - LIP, 11/20
Assist/Turnover Ratio	2.1 - ILL, 12/11; MOR, 1/3	0.3 - OCU, 11/10; LIP, 11/20
Fouls	22 - SEMO, 1/12	12 - BUT, 11/13; ILL, 12/11

2018-19 INDIVIDUAL GAME HIGHS

CATEGORY	MURRAY STATE	OPPONENT
Total Points	32 - Turley (SEMO, 1/12)	31 - Outlow (TSU, 1/26)
Points In A Quarter	13 [1st] - Adebayo (UTM, 1/12)	17 [3rd] - Howard (UK, 12/21)
Overtime Points	---	---
FG Made	10 - Adebayo (UT, 12/28)	11 - Wittinger (ILL, 12/11); Jeune (MOR, 1/3)
FG Attempted	22 - Adebayo (ILL, 12/11)	23 - Jeune (MOR, 1/3)
3PT FG Made	5 - Mayes (BUT, 11/13; SIUE, 2/9)	5 - Howard (UK, 12/21), Bell (SIUE, 1/19)
3PT FG Attempted	12 - Turley (EIU, 2/7)	10 - Bell (SIUE, 1/19); Maggard (BEL, 1/24)
FT Made	11 - Adebayo (UTM, 1/10); Turley (SEMO, 1/12)	12 - Outlow (TSU, 1/26)
FT Attempted	16 - Adebayo (UTM, 1/10)	16 - Robertson (UTM, 1/10)
Rebounds	20 - Adebayo (SIUE, 2/9)	13 - Davis (UT, 12/28)
Offensive Rebounds	7 - Adebayo (EIU, 2/7)	7 - Davis (UT, 12/28), Bauman (SIUE, 1/19)
Defensive Rebounds	15 - Adebayo (TSU, 1/26)	10 - Wooten (TSU, 1/26)
Assists	9 - Turley (UE, 11/7)	8 - 3 Times
Steals	4 - Mack (OCU, 11/10); Griffith-Wallace (JSU, 1/31)	5 - 3 Times
Turnovers	9 - Adebayo (UK, 12/21)	10 - Sanford (OCU, 11/10)
Blocks	3 - Mack (ASU, 11/27)	4 - 4 Times
Minutes	44 - Turley (EIU, 2/7)	45 - Lennox (EIU, 2/7)

2018-19 GAME-BY-GAME INDIVIDUAL HIGHS

Game	Points	Rebounds	Assists	Steals	Blocks
11/7 - Evansville	18 - Adebayo	10 - Adebayo	9 - Turley	3 - Turley	1 - 4 Players
11/10 - Oakland City	18 - Adebayo	13 - Adebayo	7 - Turley	4 - Mack	1 - 2 Players
11/13 - at Butler	15 - Adebayo, Mayes	9 - Adebayo	5 - Turley	3 - Outlaw, Turley	2 - Mack
11/20 - Lipscomb	21 - Turley	9 - Adebayo	6 - Turley	3 - Griffith-Wallace	2 - Burpo
11/27 - at Arkansas St.	18 - Adebayo	9 - Adebayo	5 - Turley	2 - Burpo, Crane	3 - Mack
12/1 - Alabama A&M	15 - Adebayo	10 - Adebayo	4 - Turley	3 - Mayes	1 - 3 Players
12/11 - at Illinois	23 - Adebayo	13 - Adebayo	4 - Turley	2 - Mayes, Adebayo	1 - Manley
12/13 - Bethel (TN)	21 - Adebayo	13 - Adebayo	6 - Turley	3 - Griffith-Wallace	2 - Mack
12//18 - Southern Ill.	17 - Adebayo	8 - Adebayo	5 - Turley	2 - Mayes	2 - Mack
12/21 - at Kentucky	20 - Adebayo	9 - Adebayo	5 - Turley	3 - Griffith-Wallace	1 - Burpo
12/28 - at Tennessee	28 - Adebayo	8 - Crane	4 - Turley	3 - Adebayo	1 - Hill
1/3 - Morehead St.	14 - Turley	10 - Adebayo	3 - Burpo	1 - 5 Players	1 - Adebayo, Mack
1/5 - Eastern Ky.	25 - Adebayo	11 - Adebayo	5 - Griffith-Wallace	3 - Burpo, Mayes	1 - 3 Players
1/10 - at UT Martin	25 - Adebayo	12 - Adebayo	6 - Turley	1 - 4 Players	1 - Mayes, Turley
1/12 - at Southeast Mo.	32 - Turley	10 - Adebayo	3 - Turley, Burpo	3 - Turley	2 - Adebayo
1/17 - at Eastern Ill.	20 - Turley	15 - Adebayo	2 - 4 Players	2 - Turley	1 - Crane
1/19 - at SIUE	20 - Adebayo	14 - Adebayo	4 - Turley	1 - Griffith-Wallace, Turley	1 - Crane, Manley
1/24 - Belmont	20 - Adebayo	11 - Adebayo	5 - Turley	2 - Turley	1 - 3 Players
1/26 - Tennessee St.	20 - Turley	18 - Adebayo	4 - Turley	3 - Turley	1 - 3 Players
1/31 - at Jacksonville State	25 - Griffith-Wallace	15 - Adebayo	3 - Griffith-Wallace, Turley	4 - Griffith-Wallace	1 - Adebayo, Mayes
2/2 -at Tennessee Tech	25 - Adebayo	10 - Adebayo	6 - Griffith-Wallace	1 - 4 Players	1 - Barrett
2/7 - Eastern Ill.	18 - Griffith-Wallace, Turley	20 - Adebayo	3 - Griffith-Wallace, Adebayo	3 - Griffith-Wallace, Crane	1 - Crane
2/9 - SIUE	27 - Adebayo	16 - Adebayo	67- Turley	3 - Griffith-Wallace	2 - Mack
2/14 - at Eastern Ky.					
2/116 - at Austin Peay					
2/21 - UT Martin					
2/23 - Southeast Mo.					
2/28 - at Morehead St.					
3/2 - Austin Peay					

Bold Italics Indicates Team Season-High

2018-19 STARTERS BY GAME

Game	1 - G	2 - G	3 - G/F	4 - F	5 - C	Lineup # (Times Used)
11/7 - Evansville	Turley	Mayes	Outlaw	Crane	Adebayo	1 (1)
11/10 - Oakland City	Turley	Mayes	Griffith-Wallace	Crane	Adebayo	2 (1)
11/13 - at Butler	Turley	Mayes	Outlaw	Crane	Adebayo	1 (2)
11/20 - Lipscomb	Turley	Mayes	Outlaw	Burpo	Adebayo	3 (1)
11/27 - at Arkansas St.	Turley	Mayes	Outlaw	Burpo	Adebayo	3 (2)
12/1 - Alabama A&M	Turley	Mayes	Crane	Burpo	Adebayo	4 (1)
12/11 - at Illinois	Turley	Mayes	Griffith-Wallace	Burpo	Adebayo	5 (1)
12/13 - Bethel (TN)	Turley	Mayes	Griffith-Wallace	Mack	Adebayo	6 (1)
12/18 - Southern Ill.	Turley	Mayes	Griffith-Wallace	Mack	Adebayo	6 (2)
12/21 - at Kentucky	Turley	Mayes	Griffith-Wallace	Mack	Adebayo	6 (3)
12/28 - at Tennessee	Turley	Mayes	Griffith-Wallace	Crane	Adebayo	2 (2)
1/3 - Morehead St.	Turley	Mayes	Griffith-Wallace	Crane	Adebayo	2 (3)
1/5 - Eastern Ky.	Turley	Mayes	Griffith-Wallace	Crane	Adebayo	2 (4)
1/10 - at UT Martin	Turley	Mayes	Griffith-Wallace	Crane	Adebayo	2 (5)
1/12 - at Southeast Mo.	Turley	Mayes	Burpo	Crane	Adebayo	4 (2)
1/17 - at Eastern Ill.	Turley	Mayes	Burpo	Crane	Adebayo	4 (3)
1/19 - at SIUE	Turley	Mayes	Burpo	Crane	Adebayo	4 (4)
1/24 - Belmont	Turley	Mayes	Burpo	Crane	Adebayo	4 (5)
1/26 - Tennessee St.	Turley	Mayes	Burpo	Crane	Adebayo	4 (6)
1/31 - at Jacksonville St.	Turley	Mayes	Griffith-Wallace	Crane	Adebayo	2 (6)
2/2 - at Tennessee Tech	Turley	Mayes	Griffith-Wallace	Crane	Adebayo	2 (7)
2/7 - Eastern Ill.	Turley	Mayes	Griffith-Wallace	Crane	Adebayo	2 (8)
2/9 - SIUE	Turley	Burpo	Griffith-Wallace	Crane	Adebayo	7 (1)
2/14 - at Eastern Ky.						
2/116 - at Austin Peay						
2/21 - UT Martin						
2/23 - Southeast Mo.						
2/28 - at Morehead St.						
3/2 - Austin Peay						

2018-19 DOUBLE-DOUBLES

Player (DD#)	Game	Category 1	Category 2
Evelyn Adebayo (1)	Evansville	18 Points	10 Rebounds
Evelyn Adebayo (2)	Oakland City	18 Points	13 Rebounds
Evelyn Adebayo (3)	Alabama A&M	15 Points	10 Rebounds
Evelyn Adebayo (4)	Illinois	23 Points	13 Rebounds
Evelyn Adebayo (5)	Bethel (TN)	21 Points	13 Rebounds
Evelyn Adebayo (6)	Eastern Ky.	25 Points	11 Rebounds
Evelyn Adebayo (7)	UT Martin	25 Points	12 Rebounds
Evelyn Adebayo (8)	Southeast Mo.	15 Points	10 rebounds
Evelyn Adebayo (9)	Eastern Ill.	12 Points	15 Rebounds
Evelyn Adebayo (10)	SIUE	20 Points	14 Rebounds
Evelyn Adebayo (11)	Belmont	20 Points	11 Rebounds
Evelyn Adebayo (12)	Tennessee St.	16 Points	18 Rebounds
Evelyn Adebayo (13)	Tennessee Tech	25 Points	10 Rebounds
Evelyn Adebayo (14)	Eastern Ill.	12 Points	20 Rebounds
Evelyn Adebayo (15)	SIUE	27 Points	16 Rebounds
Janika Griffith-Wallace (1)	Bethel (TN)	10 Points	10 Rebounds

2018-19 HONORS

Evelyn Adebayo - F - Jr. OVC Player of the Week - 12/18 OVC Player of the Week - 12/31 OVC Player of the Week - 2/12 College Sports Madness Mid-Major Player of the Week - 2/11 OVC Newcomer of the Week - 11/20 OVC Newcomer of the Week - 12/18 OVC Newcomer of the Week - 12/25 OVC Newcomer of the Week - 12/31 OVC Newcomer of the Week - 1/15 OVC Newcomer of the Week - 1/22 OVC Newcomer of the Week - 1/29 OVC Newcomer of the Week - 2/5 OVC Newcomer of the Week - 2/12	Macey Turley - G - Fr. OVC Freshman of the Week - 11/13 OVC Freshman of the Week - 11/27 OVC Freshman of the Week - 12/18 OVC Freshman of the Week - 1/15 OVC Freshman of the Week - 1/22 OVC Freshman of the Week - 2/12	

2018-19 STATISTICS

RECORD:	OVERALL	HOME	AWAY	NEUTRAL
ALL GAMES	9-14	7-5	2-9	0-0
CONFERENCE	5-7	3-3	2-4	0-0
NON-CONFERENCE	4-7	4-2	0-5	0-0

#	Player	gp-gs	min	avg	Total		3-Point		F-Throw		Rebounds				pf	dq	a	to	blk	stl	pts	avg
					fg-fga	fg%	3fg-fga	3fg%	ft-fa	ft%	off	def	tot	avg								
14	Adebayo, Evelyn	23-23	777	33.8	144-300	.480	22-57	.386	110-142	.775	53	217	270	11.7	50	1	32	88	7	20	420	18.3
05	Turley, Macey	23-23	784	34.1	98-266	.368	33-106	.311	78-89	.876	28	49	77	3.3	68	1	100	76	3	30	307	13.3
00	Griffith-Wallace, J.	22-13	575	26.1	78-231	.338	20-78	.256	33-46	.717	14	57	71	3.2	34	0	51	61	2	29	209	9.5
04	Mayes, Lex	23-22	706	30.7	51-153	.333	40-111	.360	27-35	.771	22	43	65	2.8	63	1	24	35	6	25	169	7.3
31	Crane, Brianna	23-17	543	23.6	66-138	.478	0-1	.000	35-50	.700	48	73	121	5.3	32	0	18	35	7	16	167	7.3
44	Gibson, Macie	2-0	25	12.5	5-6	.833	0-0	.000	3-4	.750	3	4	7	3.5	2	0	2	0	1	0	13	6.5
20	Mack, Cekeya	23-3	274	11.9	37-69	.536	0-0	.000	21-36	.583	25	44	69	3.0	34	0	6	28	15	12	95	4.1
32	Burpo, Alexis	23-10	465	20.2	37-90	.411	8-34	.235	12-29	.414	34	55	89	3.9	38	0	30	33	8	10	94	4.1
03	Outlaw, DeAsia	13-4	143	11.0	14-34	.412	1-4	.250	4-8	.500	4	10	14	1.1	17	0	6	12	1	6	33	2.5
33	Manley, Michaela	20-0	170	8.5	13-41	.317	7-26	.269	5-6	.833	2	10	12	0.6	7	0	10	9	3	6	38	1.9
11	Barrett, Paige	15-0	59	3.9	4-14	.286	0-1	.000	10-10	1.000	9	7	16	1.1	10	0	2	4	2	6	18	1.2
02	Hill, Sadie	13-0	47	3.6	3-7	.429	1-2	.500	3-5	.600	0	6	6	0.5	10	0	5	2	4	2	10	0.8
01	Blackburn, Raegan	15-0	56	3.7	2-7	.286	1-4	.250	0-2	.000	0	2	2	0.1	4	0	1	3	0	1	5	0.3
Team											49	59	108					13				
Total.....		23	4624		552-1356	.407	133-424	.314	341-462	.738	291	636	927	40.3	369	3	287	399	59	163	1578	68.6
Opponents.....		23	4627		589-1458	.404	137-458	.299	273-380	.718	288	563	851	37.0	408	-	307	324	88	204	1588	69.0

TEAM STATISTICS	MUR	OPP	Date	Opponent	Score	Att.
SCORING	1578	1588	11/07/18	EVANSVILLE	w 81-53	585
Points per game	68.6	69.0	11/10/18	OAKLAND CITY	w 113-55	938
Scoring margin	-0.4	-	11/13/18	at Butler	L 65-86	484
FIELD GOALS-ATT	552-1356	589-1458	11/20/18	LIPSCOMB	w 97-61	448
Field goal pct	.407	.404	11/27/18	at Arkansas St.	L 63-74	719
3 POINT FG-ATT	133-424	137-458	12/01/18	ALABAMA A&M	L 53-59	762
3-point FG pct	.314	.299	12/11/18	at Illinois	L 52-84	986
3-pt FG made per game	5.8	6.0	12/13/18	BETHEL (TN)	w 86-50	432
FREE THROWS-ATT	341-462	273-380	12/18/18	SOUTHERN ILL.	L 59-65	0
Free throw pct	.738	.718	12/21/18	at Kentucky	L 49-88	4312
F-Throws made per game	14.8	11.9	12/28/18	at Tennessee	L 77-98	8518
REBOUNDS	927	851	* 01/03/19	MOREHEAD ST.	L 61-83	716
Rebounds per game	40.3	37.0	* 01/05/19	EASTERN KY.	w 81-63	2852
Rebounding margin	+3.3	-	* 01/10/19	at UT Martin	L 67-75	2921
ASSISTS	287	307	* 01/12/19	at Southeast Mo. St.	w 64-59	603
Assists per game	12.5	13.3	* 1/17/19	at Eastern Ill.	L 67-75	150
TURNOVERS	399	324	* 01/19/19	at SIUE	L 54-71	497
Turnovers per game	17.3	14.1	* 01/24/19	BELMONT	L 58-65	3071
Turnover margin	-3.3	-	* 01/26/19	TENNESSEE ST.	L 61-65	3614
Assist/turnover ratio	0.7	0.9	* 01/31/19	at Jacksonville St.	w 64-59	888
STEALS	163	204	* 02/02/19	at Tennessee Tech	L 65-74	4087
Steals per game	7.1	8.9	* 02/07/19	EASTERN ILL.	Wot 60-51	1804
BLOCKS	59	88	* 02/09/19	SIUE	w 81-75	1651
Blocks per game	2.6	3.8				
ATTENDANCE	16873	24165				
Home games-Avg/Game	12-1406	11-2197				
Neutral site-Avg/Game	-	0-0				

* - OVC game

Score by Periods	1st	2nd	3rd	4th	OT	Totals
Murray St.	383	348	419	417	11	1578
Opponents	341	403	451	391	2	1588

2018-19 OVC STATISTICS

RECORD:	OVERALL	HOME	AWAY	NEUTRAL
ALL GAMES	5-7	3-3	2-4	0-0
CONFERENCE	5-7	3-3	2-4	0-0
NON-CONFERENCE	0-0	0-0	0-0	0-0

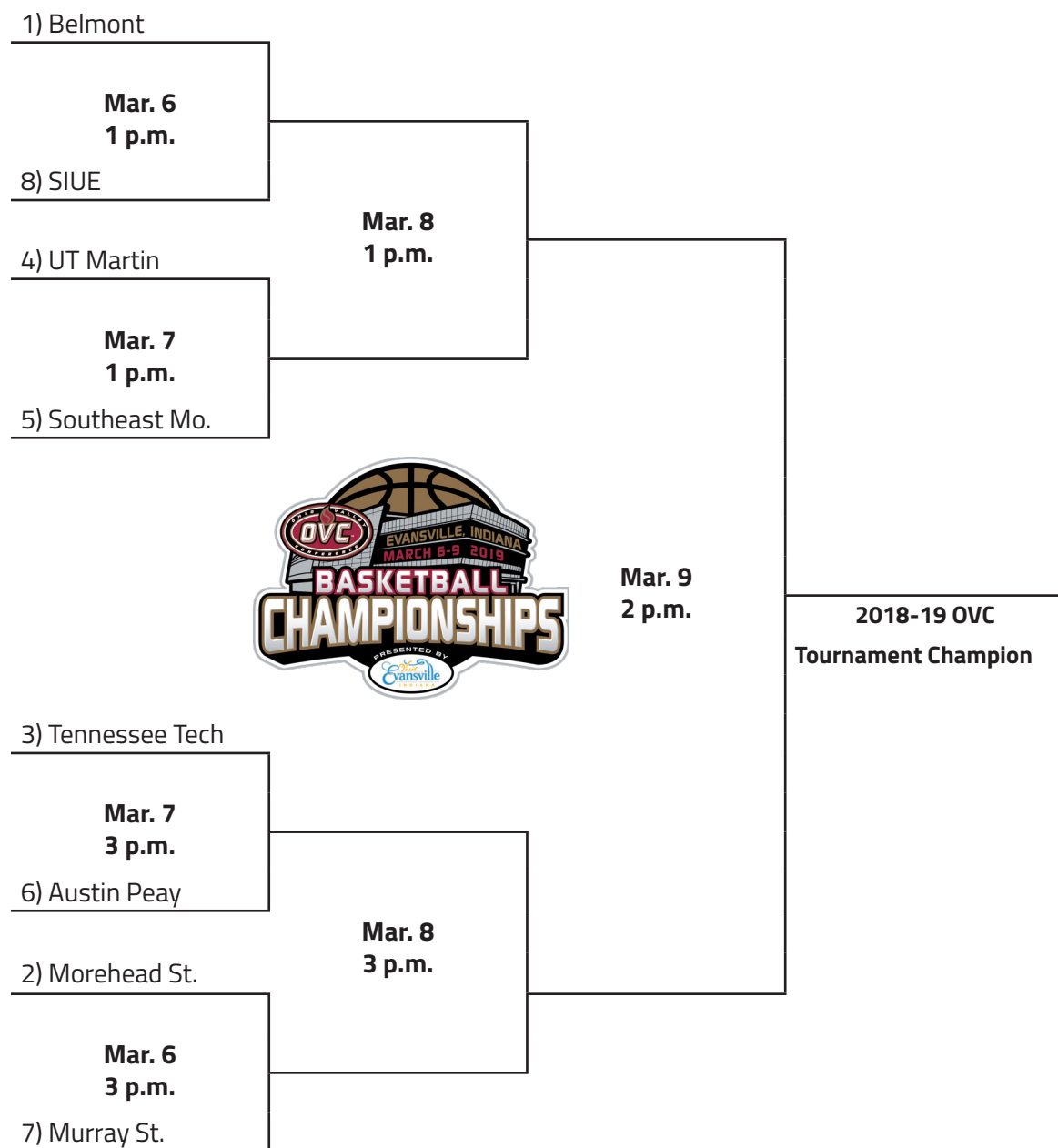
#	Player	gp-gs	min	avg	Total		3-Point		F-Throw		Rebounds											
					fg-fga	fg%	3fg-fga	3fg%	ft-fa	ft%	off	def	tot	avg	pf	dq	a	to	blk	stl	pts	avg
14	Adebayo, Evelyn	12-12	440	36.7	72-150	.480	13-31	.419	57-76	.750	32	130	162	13.5	32	0	19	51	6	7	214	17.8
05	Turley, Macey	12-12	427	35.6	50-141	.355	21-58	.362	58-65	.892	18	23	41	3.4	39	1	40	39	1	14	179	14.9
00	Griffith-Wallace, J.	12-7	309	25.8	41-121	.339	9-40	.225	25-35	.714	7	29	36	3.0	18	0	26	33	2	14	116	9.7
31	Crane, Brianna	12-12	301	25.1	35-80	.438	0-1	.000	15-24	.625	29	35	64	5.3	25	0	10	17	4	8	85	7.1
04	Mayes, Lex	12-11	377	31.4	24-70	.343	21-53	.396	11-14	.786	14	25	39	3.3	35	1	10	16	3	8	80	6.7
32	Burpo, Alexis	12-6	261	21.8	15-45	.333	2-21	.095	8-20	.400	19	31	50	4.2	24	0	13	17	4	5	40	3.3
20	Mack, Cekeya	12-0	114	9.5	13-27	.481	0-0	.000	9-19	.474	11	16	27	2.3	13	0	3	18	3	1	35	2.9
03	Outlaw, DeAsia	6-0	36	6.0	6-12	.500	0-2	.000	0-2	.000	0	6	6	1.0	6	0	2	4	0	0	12	2.0
33	Manley, Michaela	12-0	94	7.8	6-22	.273	3-14	.214	2-2	1.000	2	3	5	0.4	4	0	4	6	2	2	17	1.4
02	Hill, Sadie	4-0	7	1.8	0-0	.000	0-0	.000	3-5	.600	0	1	1	0.3	3	0	1	1	0	0	3	0.8
11	Barrett, Paige	7-0	26	3.7	0-2	.000	0-0	.000	2-2	1.000	3	2	5	0.7	3	0	1	1	1	3	2	0.3
01	Blackburn, Raegan	9-0	33	3.7	0-3	.000	0-3	.000	0-2	.000	0	1	1	0.1	3	0	1	2	0	0	0	0.0
	Team										32	32	64				6					
	Total.....	12	2425		262-673	.389	69-223	.309	190-266	.714	167	334	501	41.8	205	2	130	211	26	62	783	65.2
	Opponents.....	12	2425		294-765	.384	71-260	.273	156-212	.736	164	280	444	37.0	226	-	156	136	56	104	815	67.9

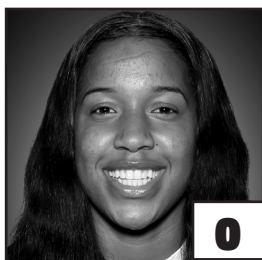
TEAM STATISTICS	MUR	OPP	Date	Opponent	Score	Att.
SCORING	783	815	* 01/03/19	MOREHEAD ST.	L 61-83	716
Points per game	65.2	67.9	* 01/05/19	EASTERN KY.	w 81-63	2852
Scoring margin	-2.7	-	* 01/10/19	at UT Martin	L 67-75	2921
FIELD GOALS-ATT	262-673	294-765	* 01/12/19	at Southeast Mo. St.	w 64-59	603
Field goal pct	.389	.384	* 1/17/19	at Eastern Ill.	L 67-75	150
3 POINT FG-ATT	69-223	71-260	* 01/19/19	at SIUE	L 54-71	497
3-point FG pct	.309	.273	* 01/24/19	BELMONT	L 58-65	3071
3-pt FG made per game	5.8	5.9	* 01/26/19	TENNESSEE ST.	L 61-65	3614
FREE THROWS-ATT	190-266	156-212	* 01/31/19	at Jacksonville St.	w 64-59	888
Free throw pct	.714	.736	* 02/02/19	at Tennessee Tech	L 65-74	4087
F-Throws made per game	15.8	13.0	* 02/07/19	EASTERN ILL.	Wot 60-51	1804
REBOUNDS	501	444	* 02/09/19	SIUE	w 81-75	1651
Rebounds per game	41.8	37.0	* - OVC game			
Rebounding margin	+4.8	-				
ASSISTS	130	156				
Assists per game	10.8	13.0				
TURNOVERS	211	136				
Turnovers per game	17.6	11.3				
Turnover margin	-6.2	-				
Assist/turnover ratio	0.6	1.1				
STEALS	62	104				
Steals per game	5.2	8.7				
BLOCKS	26	56				
Blocks per game	2.2	4.7				
ATTENDANCE	13708	9146				
Home games-Avg/Game	6-2285	6-1524				
Neutral site-Avg/Game	-	0-0				

Score by Periods	1st	2nd	3rd	4th	OT	Totals
Murray St.	204	169	203	196	11	783
Opponents	197	187	215	214	2	815

IF THE SEASON ENDED TODAY...

...Here is what the 2019 OVC Championship field would look like:





**JANIKA
GRIFFITH-WALLACE**
G ■ 5-9 ■ So.
Brampton, Ontario



**REAGAN
BLACKBURN**
G ■ 5-8 ■ Fr.
Greenville, Ky.



**SADIE
HILL**
G/F ■ 6-0 ■ Fr.
Indianapolis, Ind



**LEX
MAYES**
G ■ 5-7 ■ Fr.
Murray, Ky.



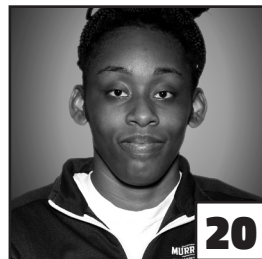
**MACEY
TURLEY**
G ■ 5-6 ■ Fr.
Murray, Ky.



**PAIGE
BARRETT**
G/F ■ 5-10 ■ So.
Scottsburg, Ind.



**EVELYN
ADEBAYO**
F ■ 6-0 ■ R-Jr.
London, England



**CEKEYA
MACK**
F ■ 6-1 ■ Jr.
Murray, Ky.



**BRIANNA
CRANE**
F ■ 6-0 ■ So.
Birmingham, Ala.



**ALEXIS
BURPO**
F/G ■ 5-10 ■ Fr.
Murray, Ky.



**MICHAELA
MANLEY**
G ■ 5-10 ■ Sr.
Benton, Ky.



**MACIE
GIBSON**
F ■ 6-1 ■ Fr.
Booneville, Ky.



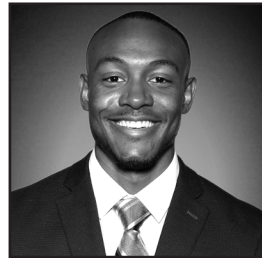
**RECHELLE
TURNER**
Head Coach
2nd Season



**MONICA
EVANS**
Assistant Coach
2nd Season



**AMBER
GUFFEY**
Assistant Coach
2nd Season



**JAUWAN
SCAIFE**
Assistant Coach
1st Season