



12-15 (8-8)

MURRAY ST. RACERS AT MOREHEAD ST./VS. AUSTIN PEAY

Morehead, Ky. (Johnson Arena)/Murray, Ky. (CFSB Center)

Thur., Feb. 28 (5:05 p.m. ET)/Sat., Mar. 2 (5 p.m.)

TV/Web: ESPN+

Live Audio: WNBS 1340 AM

(PxP - Jeremy Rose)



20-9(11-5)



14-13 (9-7)

2018-19 SCHEDULE

Date	Opponent	Time /Result
11/1	#LINDSEY WILSON	W 72-51
11/7	EVANSVILLE	W 81-53
11/10	OAKLAND CITY	W 113-55
11/13	at Butler	L 65-86
11/20	LIPSCOMB	W 97-61
11/27	at Arkansas St.	L 63-74
12/1	ALABAMA A&M	L 53-59
12/11	at Illinois	L 52-84
12/13	BETHEL (TN)	W 86-50
12/18	SOUTHERN ILL.	L 59-65
12/21	at #18 Kentucky	L 49-88
12/28	at #10 Tennessee	L 77-98
1/3	*MOREHEAD ST.	L 61-83
1/5	*EASTERN KY.	W 81-63
1/10	*at UT Martin	L 67-75
1/12	*at Southeast Mo.	W 64-59
1/17	*at Eastern Ill.	L 67-75
1/19	*at SIUE	L 54-71
1/24	*BELMONT	L 58-65
1/26	*TENNESSEE ST.	L 61-65
1/31	*at Jacksonville St.	W 64-59
2/2	*at Tennessee Tech	L 65-74
2/7	*EASTERN ILLINOIS	W 60-51 ^{OT}
2/9	*SIUE	W 81-75
2/14	*at Eastern Ky.	W 76-63
2/16	*at Austin Peay	L 56-59
2/21	*UT MARTIN	W 76-73
2/23	*SOUTHEAST MO.	W 82-74
2/28	*at Morehead St.	4:05 p.m.
3/1	*AUSTIN PEAY	5 p.m.
3/6-9	OVC Tournament	TBD

* - OVC Contest

- Exhibition

2018-19 OVC STANDINGS

Team	OVC	Overall
y-Belmont	15-1	22-5
z-Morehead St.	11-5	20-9
z-Tennessee Tech	11-5	19-8
z-UT Martin	11-5	19-8
Austin Peay	9-7	14-13
Murray St.	8-8	12-15
Jacksonville St.	8-8	14-13
Southeast Mo.	7-9	12-15
SIUE	7-9	12-15
Tennessee St.	5-11	5-23
x-Eastern Ill.	4-12	10-17
x-Eastern Ky.	0-16	2-25

As of Feb. 27, 2019

y-Clinched regular-season title

z-Clinched OVC tournament berth

x-Eliminated

MURRAY STATE PROBABLE STARTERS

No.	Name	Pos.	GP/GS	FG%	3FG%	FT%	RPG	APG	PPG
0	Janika Griffith-Wallace	G	26/17	.361	.337	.763	3.5	2.3	10.9
4	Lex Mayes	G	27/24	.343	.366	.795	2.7	1.1	7.5
5	Macey Turley	G	27/27	.362	.304	.866	3.6	4.4	13.4
14	Evelyn Adebayo	F	27/27	.470	.380	.786	11.6	1.3	18.4
31	Brianna Crane	F	27/21	.484	.000	.696	4.9	0.8	6.9

Key Reserves

20	Cekeya Mack	F	27/3	.558	.000	.691	3.0	0.2	4.1
32	Alexis Burpo	F/G	27/12	.413	.229	.486	3.8	1.4	3.9
33	Michaela Manley	F	24/0	.318	.276	.833	0.5	0.4	1.7
Team			27	.410	.320	.751	39.6	12.4	69.2

MOREHEAD STATE PROBABLE STARTERS

No.	Name	Pos.	GP/GS	FG%	3FG%	FT%	RPG	APG	PPG
22	Tierra McGowan	F	25/21	.586	.000	.583	8.7	0.4	6.8
4	Darianne Seward	G	29/29	.376	.262	.692	2.7	3.1	8.2
11	Miranda Cockett	G	29/29	.483	.500	.714	7.2	1.7	17.7
12	McKenzie Calvert	F	28/28	.480	.274	.614	4.1	3.2	12.7
13	Crystal Simmons-Cozar	G	27/27	.400	.364	.670	3.2	3.7	7.0
Team			29	.434	.296	.683	40.7	16.1	77.2

AUSTIN PEAY PROBABLE STARTERS

No.	Name	Pos.	GP/GS	FG%	3FG%	FT%	RPG	APG	PPG
2	Nieja Crawford	G	27/13	.360	.302	.720	5.1	1.4	7.1
4	Arielle Gonzalez-Varner	F	26/25	.504	.308	.638	7.7	1.3	11.7
22	Keisha Gregory	G	27/27	.407	.342	.886	5.0	2.9	13.8
23	Maggie Knowles	G/F	26/22	.430	.289	.720	4.2	0.7	7.1
33	Brandi Ferby	G	27/26	.345	.369	.722	2.1	2.9	7.7
Team			27	.389	.327	.754	34.7	12.3	69.0

2018-19 RECORD BREAKDOWN

	Record	Home	Away	Neutral	OT
Overall	12-15	9-5	3-10	0-0	0-0
OVC	8-8	5-3	3-5	0-0	0-0

SEASON STREAKS

Overall: Won 2 Home: Won 5 Away: Lost 1 Neutral: --- OT: Won 1

UPCOMING SCHEDULE

DATE	OPPONENT	SITE	TIME	WEB	RADIO

LAST TIME OUT

vs. UT Martin (W 76-73)/vs. Southeast Missouri (W 82-74)

Feb. 21 & 23 at CFSB Center

MURRAY, Ky. - The Racers went 2-0 last week with their first win over UT Martin at home since 2010 and their first season sweep of SEMO since the 2011-12 season. Against the Skyhawks, the Racers went wire-to-wire for the 76-73 win despite UT Martin almost erasing a 17-point lead in the fourth. One big key to victory for MSU was a 22-for-26 performance at the free throw line including seven each from Evelyn Adebayo and Macey Turley. Turley finished the game with 21 points, while Janika Griffith-Wallace added 19 and Adebayo had 18. Against SEMO, Murray State outscored the Redhawks 51-35 in the second half en route to an 82-74 win. All five starters reached double figures in the game with Griffith-Wallace and Adebayo leading the way with 20 points each.

THURSDAY'S OPPONENT:

vs. Morehead State Eagles


Feb. 28, 2019

4:05 p.m. ET

CJohnson Arena

SERIES HISTORY: Thursday marks the 85th meeting between Morehead State and Murray State with the Eagles holding a slim six-game advantage in the all-time series, 45-39. The Eagles have won the past three meeting in the series, taking the last meeting between the two teams in both Morehead and Murray. In Morehead, the Eagles also hold the advantage, winning 26 of 41 meetings.

SCOUTING REPORT: The Eagles will enter Thursday's contest at 20-9 overall, marking their third straight 20-win season under head coach Greg Todd. In OVC play, Morehead State is currently 11-5 and in a three-way tie for second place. The Eagles are currently averaging 77.7 points per game, while allowing 67.3, and shooting 43.4 percent from the floor. Miranda Crockett currently leads the Eagles' starters with 17.7 points per game, while Aliyah Jeune comes off the bench for Morehead State to average 16.9 points. Crockett also averages a team-high 7.2 rebounds per game, while Crystal Simmons-Cozar leads the away in assists per game at 3.7

MURRAY STATE VS. MOREHEAD STATE			EAGLES - 44 WINS, RACERS - 39 WINS		
	<u>Morehead State Quick Facts</u>		Conference: Ohio Valley		Head Coach: Greg Todd
	Location: Morehead, Ky.		Arena: Johnson Arena (6,500)		Alma Mater: Eastern Ky. '83
	Colors: Blue & Gold		2017-18 Rec.: 21-11 (12-6, T-4th OVC)		Overall Record (season): 241-132 (13th)
	Enrollment: 10,200		Postseason: L OVC 1st Rd		MOR Record (season): 84-68 (5th)
<u>Last 3 vs. MOR:</u>		<u>Current Streaks vs. MOR:</u>	<u>All-Time vs. MOR:</u>		<u>MSU-MOR Series Misc.:</u>
1/3/19 @MUR L 61-83		Overall: Lost 3	Home: 23-17		First Meeting: 3/10/72 @KWIC W 44-40
1/25/18 @MUR L 80-82		Home: Lost 2	Away: 15-26		Largest MSU Win: 3/8/08 @MUR W 87-61
2/1/17 @MOR L 59-73		Away: Lost 2	Neutral: 0-2		Largest MOR Win: 2/15/01 @MOR L 76-102

SATURDAY'S OPPONENT:

vs. Austin Peay Governors


Feb. 16, 2019

2 p.m.

Dunn Center

SERIES HISTORY: Arch rivals Murray State and Austin Peay will meet Saturday for the 99th time with the Racers clinging to a four-game lead in the overall series at 51-47, after the Govs edged the Racers two weeks ago in Clarksville. Both teams have enjoyed a healthy advantage at home with the Racers leading 33-14 in Murray, while Austin Peay leads 30-18 in Clarksville. The games in the series have also been remarkably close with 42 of the 98 contests being decided by 10 points or less.

SCOUTING REPORT: The Governors will enter the weekend with an overall record of 14-13 and 9-7 in OVC action. Peay is currently outscoring their opponents by a margin of 2.1 points per game at 69.0 to 66.9. The Governors are currently shooting 38.9-percent from the floor, 32.7-percent from 3-point range and 75.4-percent from the free throw line. Keisha Gregory and Arielle Gonzalez-Varner currently lead the Govs in scoring at 13.8 points and 11.7 points, respectively. Gonzalez-Varner also leads the team in rebounds at 7.7 per game, while Gregory and Brandi Ferby lead in assists at 3.0 per game.

MURRAY STATE VS. AUSTIN PEAY		RACERS - 51 WINS, GOVERNORS - 47 WINS	
	<u>Austin Peay Quick Facts</u>		
	Founded: 1927 Location: Clarksville, Tenn. Colors: Red & White Enrollment: 10,954	Conference: Ohio Valley Arena: Dunn Center (7,257) 2017-18 Rec.: 16-14 (9-9, 6th OVC) Postseason: L OVC QF	Head Coach: David Midlick Alma Mater: Ole Miss '91 Overall Record (season): 98-79 (6th) APSU Record (season): 53-63 (4th)
Last 3 vs. APSU: 2/16/19 @APSU L 56-59 2/24/18 @APSU L 69-75 OT 2/8/18 @MSU W 91-6	<u>Current Streaks vs. APSU:</u> Overall: Lost 2 Home: Won 6 Away: Lost 4	<u>All-Time vs. APSU:</u> Home: 33-14 Away: 18-30 Neutral: 1-2	<u>MSU-APSU Series Misc.:</u> First Meeting: 2/21/31 @MSU W 45-23 Largest MSU Win: 2/19/32 @MSU W 58-16 Largest APSU Win: 1/9/85 @APSU L 59-89

2018-19 MURRAY STATE ROSTER

No.	Player	Pos.	Ht.	Yr.	Hometown (Previous School)
0	Janika Griffith-Wallace	G	5-9	So.	Brampton, Ontario (Tech Academy at Sault Ste Marie)
1	Raegan Blackburn	G	5-8	Fr.	Greenville, Ky. (Muhlenberg County HS)
2	Sadie Hill^	F/G	6-0	Fr.	Indianapolis, Ind. (Perry Meridian HS)
4	Lex Mayes	G	5-7	Fr.	Murray, Ky. (Murray HS)
5	Macey Turley	G	5-6	Fr.	Murray, Ky. (Murray HS)
11	Paige Barrett	G/F	5-10	So.	Scottsburg, Ind. (Scottsburg HS)
14	Evelyn Adebayo	F	6-0	Jr.	London, England (Gardner-Webb)
20	Cekeya Mack	F	6-0	Jr.	Albany, Ga. (Albany Tech)
31	Brianna Crane	F	6-0	So.	Birmingham, Ala. (Ramsay HS)
32	Alexis Burpo	F/G	5-10	Fr.	Murray, Ky. (Murray HS)
33	Michaela Manley	G	5-10	Sr.	Benton, Ky. (Marshall County HS)
44	Macie Gibson^	F	6-1	Fr.	Booneville, Ky. (Owsley County HS)

^ Indicates player is out for the remainder of the season

Head Coach: Rechelle Turner (Murray St., 1996), 2nd Season

Assistant Coaches: Amber Guffey (Murray St., 2009), 2nd Season;
Jauwan Scaife (Ball St., 2012), 1st Season; Monica Evans, 2nd Season

PRONUNCIATION GUIDE

JANIKA Griffith-Wallace.....Juh-nee-kuh
 Evelyn ADEBAYO.....Add-uh-buy-oh
 CEKEYA Mack.....Suh-key-uh
 DEASIA Outlaw.....Dee-Asia
 RECHELLE Turner.....Ruh-shell
 JAUWAN SCAIFE.....Juh-wahn Scayf

HOW THEY RANK - TEAM

Statistic	Team	National Rank	Conference Rank	Value	National Leader	Value
Assist Turnover Ratio (349 ranked)	Morehead St. Austin Peay Murray St.	49 151 238	2 5 8	1.11 0.86 0.73	Oregon	1.93
Assists (349 ranked)	Morehead St. Murray St. Austin Peay	15 190 206	1 7 8	466 335 331	Baylor	625
Assists Per Game (349 ranked)	Morehead St. Murray St. Austin Peay	38 221 229	2 7 8	16.1 12.4 12.3	Baylor	23.1
Blocked Shots (348 ranked)	Morehead St. Murray St. Austin Peay	4 253 343	1 7 12	163 66 32	Baylor	191
Blocked Shots Per Game (349 ranked)	Morehead St. Murray St. Austin Peay	9 263 345	1 7 12	5.6 2.4 1.2	Baylor	7.1
Defensive Rebounds per Game (30 ranked)					Baylor	33
Fewest Fouls (345 ranked)	Murray St. Austin Peay Morehead St.	99 290 328	2 7 9	427 511 551	Penn	301
Fewest Turnovers (349 ranked)	Austin Peay Morehead St. Murray St.	94 168 256	2 4 9	386 420 462	Wyoming	258
Field-Goal Percentage (349 ranked)	Morehead St. Murray St. Austin Peay	51 137 232	2 5 8	43.4 41.0 38.9	Iowa	51.9
Field-Goal Percentage Defense (349 ranked)	Morehead St. Murray St. Austin Peay	111 202 341	3 7 12	38.7 40.4 45.2	Baylor	30.9
Free Throw Attempts (349 ranked)	Austin Peay Murray St. Morehead St.	35 37 41	4 5 6	549 546 543	Howard	674
Free Throws Made (349 ranked)	Austin Peay Murray St. Morehead St.	15 16 52	3 4 6	414 410 371	Notre Dame	474
Free-Throw Percentage (349 ranked)	Austin Peay Murray St. Morehead St.	29 35 215	2 3 7	75.4 75.1 68.3	Virginia Tech	80.3
Offensive Rebounds per Game (30 ranked)	Morehead St.	24	1	15	Troy	22
Personal Fouls Per Game (349 ranked)	Murray St. Austin Peay Morehead St.	80 270 271	2 7 8	15.8 18.9 19.0	UConn	11.3
Rebound Margin (349 ranked)	Murray St. Morehead St. Austin Peay	110 137 200	3 4 8	2.8 1.8 -0.3	Baylor	16.3
Rebounds (349 ranked)	Morehead St. Murray St. Austin Peay	13 69 252	1 5 10	1,179 1,070 937	Troy	1,275
Rebounds Per Game (349 ranked)	Morehead St. Murray St. Austin Peay	60 85 287	3 5 10	40.66 39.63 34.70	Troy	51.00
Scoring Defense (349 ranked)	Austin Peay Morehead St. Murray St.	237 243 267	6 7 9	67.0 67.3 68.8	Drexel	47.6
Scoring Margin (349 ranked)	Morehead St. Austin Peay Murray St.	50 160 186	2 5 7	10.3 2.0 0.4	Mississippi St.	30.4
Scoring Offense (349 ranked)	Morehead St. Murray St. Austin Peay	20 99 102	2 5 6	77.7 69.2 69.0	Oregon	88.2
Steals (349 ranked)	Morehead St. Austin Peay Murray St.	7 122 228	2 6 9	320 224 188	Lamar University	407
Steals Per Game (349 ranked)	Morehead St. Austin Peay Murray St.	20 135 243	2 6 9	11.0 8.3 7.0	Lamar University	15.7
Three Pt FG Defense (349 ranked)	Murray St. Austin Peay Morehead St.	106 269 309	5 9 11	30.0 33.0 34.4	Drexel	23.1
Three-Point Field Goals Attempted (150 ranked)	Austin Peay Morehead St.	30 96	2 6	664 571	DePaul	944
Three-Point Field Goals Made (349 ranked)	Austin Peay Morehead St. Murray St.	39 130 138	2 6 8	217 169 168	DePaul	318
Three-Point Field Goals Per Game (349 ranked)	Austin Peay Murray St. Morehead St.	44 150 176	2 7 8	8.0 6.2 5.8	Idaho	11.7
Three-Point Field-Goal Percentage (349 ranked)	Murray St. Austin Peay Morehead St.	97 117 249	4 6 7	33.0 32.7 29.6	Oregon	43.0
Turnover Margin (349 ranked)	Morehead St. Austin Peay Murray St.	19 41 301	2 3 11	5.24 3.11 -3.00	Lamar University	10.38

HOW THEY RANK - TEAM

Turnovers Forced (349 ranked)	Morehead St.	38	2	19.72	Lamar University	25.19
	Austin Peay	99	7	17.41		
	Murray St.	282	10	14.11		
Turnovers Per Game (349 ranked)	Austin Peay	73	2	14.3	Oregon	10.2
	Morehead St.	88	3	14.5		
	Murray St.	238	10	17.1		
Won-Lost Percentage (349 ranked)	Morehead St.	77	4	69.0	Baylor	96.3
	Austin Peay	176	5	51.9		
	Murray St.	212	7	44.4		

HOW THEY RANK - INDIVIDUAL

Statistic	Player	National Rank	Conference Rank	Value	National Leader	Value
Assist Turnover Ratio (250 ranked)	Crystal Simmons-Cozar, Morehead St. Darianne Seward, Morehead St. Macey Turley, Murray St.	38 245 247	3 10 11	2.22 1.27 1.27	Jazzmun Holmes, Mississippi St.	4.53
Assists (150 ranked)	Macey Turley, Murray St.	88	4	118	Sabrina Ionescu, Oregon	230
Assists Per Game (249 ranked)	Macey Turley, Murray St. Crystal Simmons-Cozar, Morehead St.	108 192	4 7	4.4 3.7	Amy O'Neill, St. Francis Brooklyn	8.5
Blocked Shots (149 ranked)	Crystal Simmons-Cozar, Morehead St.	89	4	39	Channon Fluker, CSUN	98
Blocked Shots Per Game (248 ranked)	Crystal Simmons-Cozar, Morehead St. Tierra McGowan, Morehead St.	96 142	4 6	1.44 1.24	Channon Fluker, CSUN	3.77
Defensive Rebounds per Game (30 ranked)	Evelyn Adebayo, Murray St.	5	1	10	Kristine Anigwe, California	11
Double Doubles (50 ranked)	Evelyn Adebayo, Murray St.	7	1	18	Kristine Anigwe, California	27
Field Goal Attempts (148 ranked)	Miranda Crockett, Morehead St. Aliyah Jeune, Morehead St. Evelyn Adebayo, Murray St.	20 29 107	1 2 4	445 436 364	Aari McDonald, Arizona	505
Field Goals Made (149 ranked)	Miranda Crockett, Morehead St. Evelyn Adebayo, Murray St. Aliyah Jeune, Morehead St.	10 76 88	1 2 3	215 171 167	Megan Gustafson, Iowa	318
Field-Goal Percentage (250 ranked)	Miranda Crockett, Morehead St. Mckenzie Calvert, Morehead St. Evelyn Adebayo, Murray St.	100 105 118	1 2 4	48.3 48.0 47.0	Megan Gustafson, Iowa	70.4
Final Points (196 ranked)	Miranda Crockett, Morehead St. Evelyn Adebayo, Murray St. Aliyah Jeune, Morehead St.	35 44 67	1 2 3	512 497 474	Megan Gustafson, Iowa	768
Free Throw Attempts (142 ranked)	Evelyn Adebayo, Murray St. Keisha Gregory, Austin Peay	29 61	2 3	159 140	Kristine Anigwe, California	233
Free Throws Made (148 ranked)	Evelyn Adebayo, Murray St. Keisha Gregory, Austin Peay Macey Turley, Murray St.	25 27 95	2 3 5	125 124 97	Cierra Dillard, Buffalo	181
Free-Throw Percentage (250 ranked)	Keisha Gregory, Austin Peay Macey Turley, Murray St. Evelyn Adebayo, Murray St.	14 31 141	1 2 7	88.6 86.6 78.6	Rebekah Hand, Marist	93.9
Minutes Played (150 ranked)	Miranda Crockett, Morehead St. Evelyn Adebayo, Murray St. Macey Turley, Murray St.	21 91 107	1 2 3	986:45 934:59 927:12	Karissa McLaughlin, Purdue	1125:17
Minutes Played Per Game (150 ranked)	Evelyn Adebayo, Murray St. Macey Turley, Murray St.	118 142	1 2	34.63 34.34	Lauren Holden, Fordham	38.72
Offensive Rebounds per Game (30 ranked)	Tierra McGowan, Morehead St.	7	1	4	Teaira McCowan, Mississippi St.	6
Points Per Game (250 ranked)	Evelyn Adebayo, Murray St. Miranda Crockett, Morehead St. Aliyah Jeune, Morehead St.	52 68 91	1 2 5	18.4 17.7 16.9	Megan Gustafson, Iowa	27.4
Rebounds (146 ranked)	Evelyn Adebayo, Murray St. Tierra McGowan, Morehead St. Miranda Crockett, Morehead St.	9 101 125	1 5 7	314 217 209	Kristine Anigwe, California	428
Rebounds Per Game (250 ranked)	Evelyn Adebayo, Murray St. Tierra McGowan, Morehead St. Arielle Gonzalez-Varner, Austin Peay Miranda Crockett, Morehead St.	11 82 156 225	1 4 8 9	11.6 8.7 7.7 7.2	Kristine Anigwe, California	15.9
Steals (148 ranked)	Crystal Simmons-Cozar, Morehead St. Miranda Crockett, Morehead St. Mckenzie Calvert, Morehead St.	29 80 148	2 4 6	69 57 50	Chastadie Barrs, Lamar University	162
Steals Per Game (248 ranked)	Crystal Simmons-Cozar, Morehead St. Miranda Crockett, Morehead St. Mckenzie Calvert, Morehead St.	36 136 210	2 5 6	2.56 1.97 1.79	Chastadie Barrs, Lamar University	6.23
Three-Point Field Goals Attempted (148 ranked)	Aliyah Jeune, Morehead St.	14	1	226	Taylor Pierce, Idaho	268
Three-Point Field Goals Made (148 ranked)	Aliyah Jeune, Morehead St.	43	2	72	Taylor Pierce, Idaho	114
Three-Point Field Goals Per Game (247 ranked)	Aliyah Jeune, Morehead St.	56	2	2.57	Taylor Pierce, Idaho	4.56
Three-Point Field-Goal Percentage (188 ranked)	Aliyah Jeune, Morehead St.	164	6	31.9	Marta Gomez, Wyoming	49.6
Triple Doubles (7 ranked)					Sabrina Ionescu, Oregon	7

THE INSIDE TRACK

GAME 26-27 NOTES - MOR & APSU

A WIN THURSDAY WOULD...

Snap a three-game skid to the Eagles and give head coach Rechelle Turner her first win against Morehead State's Greg Todd.

A WIN SATURDAY WOULD...

Allow the Racers to end the 2018-19 season on a five-game home win streak and push their winning streak at home against Peay to seven.

ALONE AT THE TOP

With two double-doubles last week, Evelyn Adebayo became MSU's single-season double-double leader. She currently has 18, surpassing the previous record of 16 held by Karen Hubert-Price and Stephanie Minor.

ALL GOOD THINGS

Macey Turley missed her second free throw attempt against UT Martin stopping her consecutive free throw streak at 29. Turley's streak ties for the third longest in program history and is just two behind current Racer assistant Amber Guffey.

7-11

For the seventh time this season, Macey Turley was named as the OVC Freshman of the Week for averaging 17.0 points and 5.0 assists. Meanwhile, Adebayo's record-setting week earned the England native her 11th OVC Newcomer of the Week by averaging 19.0 points and 11.0 rebounds per game.

BATTLE OF THE BORDER

Saturday is the Racers' final of two Heritage Bank Battle of the Border matchup. The Heritage Bank Battle of the Border is an all-sports competition between Murray State and Austin Peay. Currently, the Racers lead this year's standings, 18-9.

OK, WHAT'S NEXT?

The Racers will now wait until after Saturday's games to see if they qualify for the eight-team OVC tournament that begins next Wednesday. Currently, the Racers sit in sixth place with two games to play.

GAME 26-27 NOTES - UTM & SEMO

A WIN THURSDAY WOULD...

Give the Racers their first win over UT Martin at the CFSB Center since the 2009-2010 season and put an end to an eight-game skid against the Skyhawks at The Bank.

A WIN SATURDAY WOULD...

Give Murray State its first season-sweep of the Redhawks since the 2011-12 season.

JUST ONE MORE

With her next double-double, Evelyn Adebayo will become the MSU single-season double-doubles leader with 17. She notched her 16th last Thursday to tie her with Karen Hubert-Price, who was the first Racer to accomplish the feat, and Stephanie Minor, who notched 16 in each of her three seasons in blue and gold.

#	Player	Seas.	D-Ds
1.	Karen Hubert-Price	83-84	16
	Stephanie Minor	94-95	16
	Stephanie Minor	95-96	16
	Stephanie Minor	96-97	16
	Evelyn Adebayo	18-19	16
6.	Fondeolyn Garner	91-92	15
7.	Michelle Wenning	90-91	14
	Ashley N. Hayes	08-09	14
9.	Monika Gadson	99-00	13
10.	Geralyn Ferth	85-86	11
	Michelle Wenning	88-89	11
	Ke'Shunan James	17-18	11

MOVIN' ON UP

Macey Turley is currently on a consecutive free throw streak that is making its way up the all-time charts. She has currently made 28 straight free throws, the fourth longest in school history. With two more, she will move into third and with four more she will move into second, passing current Racer assistant Amber Guffey.

#	Player	Dates	FTs
1.	Paige Guffey	11/14/08-12/19/08	44
2.	Amber Guffey	12/18/05-1/130/06	31
3.	Melissa Huffman	1/28/89-1/14/90	29
4.	Macey Turley	1/31/19-Pr.	28
5.	Mariah Robinson	11/12/13-11/29/13	27
6.	Ke'Shunan James	11/15/17-11/18/17	26

A PERFECT 10

For the 10th time this season and the sixth time in as many weeks, Evelyn Adebayo was named as the OVC Newcomer of the Week. Adebayo averaged 19.5 points and 11.0 rebounds over a 1-1 week for the Racers

GAME 24-25 NOTES - EKU & APSU

A WIN THURSDAY WOULD...

Give the Racers a three-game win streak for the first time since the 2016-17 season.

A WIN SATURDAY WOULD...

Potentially vault the Racers into fifth place in the OVC standings, depending on results of Thursday's games by the Racers and Gobs and Thursday and Saturday's games by SEMO.

BATTLE OF THE BORDER

Saturday is the Racers' first of two Heritage Bank Battle of the Border matchup. The Heritage Bank Battle of the Border is an all-sports competition between Murray State and Austin Peay. Through the fall, the Racers currently lead this year's standings, 12-6.

CHASING THE DUB

Evelyn Adebayo currently has 15 double-doubles this season, including one in each of her last three games. Her 15 this season currently places her fifth on the MSU single-season list with 6 regular-season games to play.

#	Player	Seas.	D-Ds
1.	Karen Hubert-Price	83-84	16
	Stephanie Minor	94-95	16
	Stephanie Minor	95-96	16
	Stephanie Minor	96-97	16
5.	Fondeolyn Garner	91-92	15
	Evelyn Adebayo	18-19	15
7.	Michelle Wenning	90-91	14
	Ashley N. Hayes	08-09	14
9.	Monika Gadson	99-00	13
10.	Geralyn Ferth	85-86	11
	Michelle Wenning	88-89	11
	Ke'Shunan James	17-18	11

MACEY ICE

Macey Turley went 10-for-10 from the free throw line in both games last week, giving her 25 consecutive made free throws. The streak is currently the fifth longest in program history.

#	Player	Dates	FTs
1.	Paige Guffey	11/14/08-12/19/08	44
2.	Amber Guffey	12/18/05-1/130/06	31
3.	Melissa Huffman	1/28/89-1/14/90	29
4.	Mariah Robinson	11/12/13-11/29/13	27
5.	Macey Turley	1/31/19-Pr.	25

THE INSIDE TRACK

AWARD ROUNDUP

For the second time this season, Evelyn Adebayo and Macey Turley swept the weekly OVC awards. In addition, Adebayo also was named as the National Mid-Major Player of the Week by College Sports Madness. For Adebayo, it was her third Player of the Week honors and her ninth Newcomer nod. For Turley, it was the sixth time this season that she has been named as the Freshman of the Week.

GAME 22-23 NOTES - EIU & SIUE

A WIN THURSDAY WOULD...

Put Murray State ahead of EIU in the standings. Depending on results of other games, it could put them in the all-important 8th position.

A WIN SATURDAY WOULD...

Snap a five-game losing streak to SIUE at the CFSB Center. After winning the first four games of the series at home, the Racers have not won at home against the Panthers since 2013.

EIGHT IS GREAT

For the eighth time this season and fourth consecutive week, Evelyn Adebayo was named as the OVC Newcomer of the Week. The redshirt-junior averaged a double-double for the fifth straight week with her 13th double-double of the season at Tennessee Tech. She also grabbed a 15 rebounds in a win over Jacksonville State.

20-POINT CLUB

The Racers only had two players all season reach 20 points in a game, but they doubled that against Jacksonville State. Janika Griffith-Wallace had 25 and Brianna Crane had 20 points in the win, joining Evelyn Adebayo and Macey Turley, who have scored 20+ points on multiple occasions.

GAME 20-21 NOTES - JSU & TTU

A WIN THURSDAY WOULD...

Put an end to a four-game skid by the Racers, which is currently tied for the longest of the season.

A WIN SATURDAY WOULD...

Give the Racers three straight wins over Tennessee Tech, marking the first time MSU has won 3-plus games over the Golden Eagles since a six-game streak from 2007-2010.

LUCKY NUMBER SEVEN

For the seventh time this season, Evelyn Adebayo was named as the OVC Newcomer of the Week. The transfer had 20 points and 11 rebounds against Belmont Thursday and followed that with 16 points and a career-high 18 rebounds against TSU Saturday.

GAME 18-19 NOTES - BEL & TSU

A WIN THURSDAY WOULD...

Give the Racers their first win over Belmont in nine games and would be the first win over the Bruins with both schools being in the OVC.

HONORED AGAIN

For the second week in a row, Evelyn Adebayo and Macey Turley swept the OVC Newcomer and Freshman of the Week awards, respectively. Adebayo averaged a double-double for the second third straight week with her ninth and tenth double-doubles of the season. Turley led the team with 18.0 points per game, making seven threes in the two games. She also pulled down a career-high seven rebounds at SIUE.

ACROSS STATE LINES

Despite Kentucky and Tennessee bordering each other, Murray State has no players from Tennessee while Belmont has none from Kentucky. Tennessee State only has one player that calls Kentucky home, Asia Sims who hails from Paris, Kentucky.

GAME 16-17 NOTES - EIU & SIUE

A WIN THURSDAY WOULD...

Give the Racers their first back-to-back road wins since 2016-17. A weekend sweep would give MSU its first three-game road winning streak since 2012-13 season, when it won four in a row.

STOCKPILING

Evelyn Adebayo picked up her fifth Newcomer of the Week honor Tuesday, while Macey Turley received her fourth Freshman of the Week honor. Adebayo average a double-double over two games, while Turley averaged 21.5 including 32 at SEMO.

A NEW MEMBER

With 32 points at SEMO, Macey Turley became just the sixth Murray State freshman to score at least 30 points in a single game Saturday.

Name	Opp. (Date)	Pts.
Rona Poe	SIUE (12/16/85)	34
Sheila Smith	YSU (1/18/86)	34
Lori Trumblee	BUT (11/30/02)	32
Macey Turley	SEMO (1/12/19)	32
Sheila Smith	EKU (1/25/86)	31
Ke'Shunnan James	APSU (2/7/15)	31

BASKETBALL ON YOUR LUNCH BREAK

This week the Racers will play two afternoon games including a rare weekday OVC matinee. MSU has played two game this season that started before 4 p.m. and went 1-1. The Racers fell against Kentucky in December a Noon Eastern tip, but were victorious last Saturday at SEMO with a 2 p.m. start.

GAME 14-15 NOTES - UTM & SEMO

A WIN IN EITHER GAME WOULD...

Give the Racers their first win at UT Martin in six years and the first at SEMO in eight years.

REUNION

Thursday will be a reunion of sorts for head coach Rechele Turner and players Lex Mayes, Macey Turley and Alexis Burpo. It will mark the first time that they have been on the court with former player/teammate Maddie Waldrop since the latter graduated from Murray High two years ago.

ADDING UP

With 25 points and 11 rebounds Evelyn Adebayo tallied her sixth double-double of the season. She currently leads the Racers with 18.5 points and 9.9 rebounds per game.

WORKING THE LINE

Thursday will be a battle of the two best free-throw shooting teams in the OVC. UT Martin currently leads the league at 76.8 percent, while the Racers follow at 76.2.

GAME 12-13 NOTES - MOR & ECU

A WIN THURSDAY WOULD...

Put an end to a three-game skid by the Racers. Murray State has lost its last three game with its last win coming against Bethel on Dec. 13.

THE INSIDE TRACK

THE SECOND SEASON

The Racers are 21-20 all-time in OVC openers and are 15-7 in those game when they are played in Murray. MSU has won its last three OVC openers and 5-4 all-time in conference lid lifters against Morehead State.

KEEP 'EM COMIN'

On Monday, Evelyn Adebayo won her second OVC Player of the Week award and fourth Newcomer of the Week honor. The junior had a career-high 28 at No. 10 Tennessee and went 7-for-7 at the free throw line.

IT'S A SMALL, SMALL WORLD

Both Murray State's Janika Griffith-Wallace and Morehead State's Georgia Campbell hail from the Toronto suburb of Brampton in Canada, while the Racers' DeAsia Outlaw and the Eagles' Ashley Moore played junior college ball together at Wabash Valley.

GAME 11 NOTES - UT

A WIN FRIDAY WOULD...

Give MSU its first win over an SEC team since 1980, when the Racers defeated Vanderbilt. Currently, MSU is 6-35 against the South-eastern Conference.

MORE HARDWARE

For the third time this season, Evelyn Adebayo was named as the OVC Newcomer of the Week. Over two games, she averaged 18.5 points and 8.5 rebounds.

ROLE REVERSAL

The Lady Vols are currently ranked 48th out of 349 teams in Division I when it comes to getting to the free throw line. However, when they get there they have trouble, shooting just 67.1 percent and ranking 209th. Conversely, MSU is the 28th best free throw shooting team in the country at 75.7 percent, but they have trouble getting to the line, ranking 231st in attempts at just 17.3 per game

GAME 10 NOTES - UK

GETTING IT DONE

Despite using just two bench players Tuesday against SIU, the Racer reserves still outscored their SIU counterparts 18-9, despite the Salukis using three more players. Brianna Crane dumped in 13 points, while Alexis Burpo added six.

THE KEY

One thing has separated the Racer wins from losses this season on the stat sheet and that is field-goal percentage. MSU is 4-0 when outshooting their opponents and 0-5 when being outshot.

GAME 9 NOTES - SIU

A WIN TUESDAY WOULD...

Give the Racers a much-needed boots of momentum as they head into arguably their two toughest games of the season; at No. 18 Kentucky On Dec. 22 and at No. 9 Tennessee on Dec. 28.

A CLEAN SWEEP

Evelyn Adebayo and Macey Turley swept the weekly OVC awards for the Racers Tuesday with Adebayo being named both Player and Newcomer and Turley earning the Freshman nod. Adebayo notched a double-double in both games last week to average 22.0 point and 13.0 rebounds, while Turley averaged 14.0 points and 5.0 assists.

LEADING THE WAY

Evelyn Adebayo has had the most points and rebounds, either by herself or shared, in every game for the Racers this season. Already with five double-doubles in eight games, the transfer is averaging 17.6 point and 10.8 rebounds per game.

WELCOME BACK

For the first time since her departure following the 2007-08 season, Jody Adams returns to the CFSB Center, this time as an assistant coach for SIU. Adams coached one season at the Bank, guiding the Racers to a 24-8 mark, an OVC tournament title and the program's first trip to the NCAA Tournament. Current Racer assistant Amber Guffey was a member Adams' championship squad.

GAME 8 NOTES - BET

A WIN THURSDAY WOULD...

Snap a three-game skid by the Racers which includes losses at Arkansas State and Illinois and at home against Alabama A&M.

FOUR & COUNTING

Evelyn Adebayo notched her fourth double-double of the season at Illinois with a career-high 23 points and 13 rebounds, which tied her previous career best.

BEST BEHAVIOR

The Racers continue to be one of the most disciplined teams in the nation as they have committed the sixth fewest fouls in the country. The Racers currently have 101 fouls on the season, while leader Montana has 94. at the CFSB Center in 2018.

GAME 7 NOTES - ILL

A WIN TUESDAY WOULD...

Give the Racers their first win over a Big Ten program. MSU is currently 0-4 against the power five league going with two losses against Indiana and one each against Purdue and Illinois.

DOIN' WORK

Through the first six games this season, Evelyn Adebayo has had three double-doubles. She is currently averaging 16.2 points and 10.0 rebounds per game placing her fourth and second in each category, respectively.

GAME 6 NOTES - AAMU

A WIN SATURDAY WOULD...

Give the Racers just their third 4-0 start at home since 2008-09. The only other previous time the Racer won their first four at The Bank was two seasons ago in 2016-17.

MOVIN' ON UP

With their 18-for-20 performance at the charity stripe Tuesday at Arkansas State, the Racers skyrocketed from 10th to 4th nationally in free throw percentage. MSU is currently shooting 82.2 percent from the free throw line, while DePaul leads the nation at 85.0.

DANGEROUS FROM DOWNTOWN

As a team, Murray State currently has the seventh best three-point shooting percentage in the nation at 41.8 and the nation's 12th-best three-point shooter in Lex Mayes, who is making 55.2-percent of her three-point attempts. St. Francis Brooklyn currently paces the nation in team percentage at 44.4, while Shalexxus Aaron leads individually at 72.7 percent.

BEASTS UNDERNEATH

The Racers currently lead the OVC in both rebounds per game and rebound margin. MSU currently averages 43.0 boards per game, while outrebounding their opponents by an average of 9.6 rebounds per game. Those numbers currently place the Racers 47th nationally in rebounds per game and 27th in rebound margin.

THE INSIDE TRACK

GAME 5 NOTES - ASU

A WIN TUESDAY WOULD...

Give the Racers their first win over a program that sponsors FBS football since 2012 when they defeated Ball State at home, 63-53.

RANK AND FILE

Murray State currently ranks in the top 10 nationally in three separate categories. They are 10th in free throw percentage at 80.0, eighth in scoring offense at 89.0 and fifth in fewest fouls at 54.

EIGHT IS GREAT

In three of their four games this season, the Racers have limited their opponents to just eight points in the opening stanza. They did so against Evansville, Oakland City and Lipscomb and went 3-0 in those contests.

THREE FOR ALL

Macey Turley kept Murray State's streak of winning a weekly award alive Tuesday when she was named as the OVC Freshman of the Week for the second time this season.

A FRIENDLY FACE

Arkansas State assistant Todd Buchanan is no stranger to the Racers, as he is a 1995 graduate of Murray State. In addition to his time as a student at Murray State, Buchanan served as an assistant for the Racer women from 1992-1995 and also coached at three local high schools; Lyon County, Calloway County and Murray.

GAME 4 NOTES - LIP

A WIN TUESDAY WOULD...

Give the Racers their first three-game win-streak at home since 2016-17 when they posted wins over MacMurray, Tennessee State and Eastern Illinois (Dec. 12 -Jan. 11).

BACK-TO-BACK

Although she did come up just short of her third straight double-double against Butler, Evelyn Adebayo was named as the OVC Newcomer of the Week, giving the Racers a weekly winner in each of the first two weeks of the season. Macey Turley was the first winner for Murray State, taking home freshman honors last week.

TURNOVER TROUBLE

The Racers committed a season-high 23 turnovers against Butler, leading directly to 27 points for the Bulldogs. The game also marked the first-time this year that MSU had finished a game with more turnovers than assists (11).

GAME 3 NOTES - BUT

DOUBLE YOUR FUN

For the second time in as many games, Evelyn Adebayo notched a double-double. Through two games this season she is averaging 18.0 points per game and 11.5 rebounds.

BIG NUMBERS

The Racers scored 113 points against Oakland City Saturday for the fourth most points in school single-game history. In addition, the Racers' 40-made field goals is the 11th most in program history.

SPREADING THE LOVE

All 12 eligible players played for the Racers with 11 of them tallying points. Of the 11 players that scored in the game, seven reached double digits.

GAME 2 NOTES - OAK

OPENING STATEMENT

MSU's win Wednesday was the first in a season opener against a Division I team since beating the Purple Aces to start the 2011-12 season, as well as the largest margin of victory against any Division I opponents since a 32 point win over Alabama A&M in 2016-17.

HISTORIC DEBUT

With game-highs of 18 points and 10 rebounds, Evelyn Adebayo became the first known Racer to debut with a double-double (single-game records dating back to 1997-98) Wednesday versus Evansville.

QUICK TURNAROUND

In Wednesday's opener, the Racers addressed two areas of concerns from the exhibition Thursday night, three-point and free throw shooting. The Racers were just 1-for-13 (7.7%) from three and 19-for-35 (54.3%) in their lone exhibition. However, on Wednesday, MSU was 7-for-10 (70.0%) from the stripe and 10-for-20 (50.0 %) from beyond the arc.

GAME 1 NOTES - UE

LIFTING THE LID

Murray State opens its 52nd season of women's basketball Wednesday and is 22-30 all-time in season openers and 26-23 in home openers. The Racers are 4-4 all-time against UE in season openers and 3-3 against the Purple Aces in home openers.

SHAKING THE DUST OFF

The Racers won their only exhibition of the year last Thursday, 72-51 over Lindsey Wilson. After sitting out last season due to NCAA transfer rules, Evelyn Adebayo easily got back in the groove and led MSU with 21 points, while Janika Griffith-Wallace posted a double-double with 13 points and 11 rebounds.

NEXT ONE UP

The Racers return just 20.4 percent of their scoring from last year with the most notable loss being the 2017-18 OVC Player of the Year, Ke'Shunnan James. Brianna Crane will lead all returners this season after averaging 7.2 points and 5.7 rebounds per game last season.

HEAD COACH RECEHELLE TURNER

2ND SEASON AT MSU/2ND SEASON OVERALL

TURNER'S CAREER YEAR-BY-YEAR COACHING RECORD

Year	Team	OVERALL			OVC			POSTSEASON		
		W	L	Pct.	W	L	Pct.	W	L	Pct.
2017-18	Murray St.	11	19	.367	7	11	.389	0	1	.000
2018-19	Murray St.	12	15	.444	8	8	.500	-	-	.000
TOTAL		23	34	.403	15	19	.441	0	0	.000
OT		1	1	.500	1	1	.500	0	0	.000

TURNER VS. THE COMPETITION

OPPONENT	RECORD	OPPONENT	RECORD
Austin Peay*	1-2	Lipscomb	1-1
Alabama	1-0	Louisville	0-1
Alabama A&M	0-2	Mississippi Valley St.	1-0
Arkansas St.	0-1	Morehead St.*	0-2
Belmont*	0-3	UNC Greensboro	1-0
Bethel (TN)	2-0	Oakland City	1-0
Butler	0-2	Northern Kentucky	1-0
Evansville	1-1	Southern Illinois	0-1
ETSU	0-1	SIUE*	1-3
Eastern Illinois*	3-1	Southeast Missouri*	2-2
Eastern Kentucky*	3-0	Tennessee	0-1
Illinois	0-1	Tennessee State*	1-1
Jacksonville State*	0-3	Tennessee Tech*	2-1
Kentucky	0-1	UT Martin*	1-3

2018 Opponents Listed In BOLD

*Indicates OVC Opponent

THE RACERS ARE....

12-15	...Overall	7-11	...Bench outscored by Opp. bench	3-2	...in November
8-8	...vs. OVC		...Tied, bench scoring	1-5	...in December
4-7	...vs. Non-Conference	11-7	...Outrebounded Opponent	3-6	...in January
		1-8	...Outrebounded by Opponent	5-2	...in February
			...Tied, rebounds		...in March
		11-7	...More FTM than Opponent		
11-4	...Leading at Half	1-7	...Less FTM than Opponent		...on Mondays
1-11	...Trailing at Half	0-1	...Tied, FTM	1-4	...on Tuesdays
	...Tied at Half	10-2	...More 3FGM than Opponent	1-0	...on Wednesdays
	...In Overtime	2-12	...Less 3FGM than Opponent	5-4	...on Thursdays
9-4	...Outshoot Opponent (%)	0-1	...Tied, 3FGM	0-2	...on Fridays
3-11	...Outshot by Opponent (%)	6-12	...More turnovers than Opponent	5-5	...on Saturdays
	...Tied opponent, shooting (%)	6-3	...Less turnovers than Opponent		...on Sundays
10-6	...Shoot .400 or better		...Tied, turnovers		
2-9	...Shoot under .400	1-7	...Score ≤ 60	2-4	...in the Afternoon (Before 4 p.m.)
2-7	...Opponent shoot .400 or better	9-1	...Score 75+	10-11	...in the Evenings (4 p.m. or After)
10-8	...Opponent shoot under .400	6-2	...Opponents Score ≤ 60		
5-4	...Bench outscores Opp. bench	1-7	...Opponents Score 75+		

2018 SCORE BY QUARTERS

	1st Qtr.	2nd Qtr.	3rd Qtr.	4th Qtr.	OT	Total
Murray St.	454	425	490	488	11	1868
Avg.	16.8	15.7	18.1	18.1	11.0	69.2
Opponents	394	469	529	462	2	1856
Avg.	14.6	17.4	19.6	17.1	2.0	68.7

BENCH SCORING

RACERS	OPPONENTS
Season Avg.: 15.0	Season Avg.: 24.0
Team High: 60 (OCU, 11/10)	Team High: 45 (TTU, 2/2)
Team Low: 0 (JSU, 1/31)	Team Low: 5 (BEL, 1/24)
Individual High: 14 - Mayes (SIUE, 2/9)	Individual High: 31 - Outlow (TSU, 1/26)

2018 WON-LOST MARGINS

Margin	1	2	3	4	5	6	7	8	9	10	11	12	13	14	15
Won By			1		2	1		1	1				1		
Lost By			1	1		2	1	2	1		1				
Margin	16	17	18	19	20	21	22	23	24	25	26	27	28	29	30+
Won By			1										1		3
Lost By		1				2	1								2

2018-19 TEAM HIGHS & LOWS - RACERS

CATEGORY	HIGH	LOW
Total Points	113 - OCU, 11/10	49 - UK, 12/21
Points In A Quarter	33 - [3rd, 4th] OCU, 11/10	6 - [2nd] AAMU, 12/1; [1st] ILL, 12/11
Overtime Points	11- EIU, 2/7	11- EIU, 2/7
FG Made	40 - OCU, 11/10	17 - SIUE, 1/19
FG Attempted	79 - OCU, 11/10	46 - SEMO, 1/12
FG%	51.5 - BET, 12/13	27.1 - ILL, 12/11
3PT FG Made	14 - LIP, 11/20	0 - AAMU, 12/1
3PT FG Attempted	26 - 5 Times	8 - TTU, 2/2
3PT FG%	57.1 - SEMO, 1/12	0.0 - AAMU, 12/1
FT Made	28 - OCU, 11/10	7 - UE, 11/7; UK, 12/21
FT Attempted	34 - OCU, 11/10	10 - UE, 11/7; BUT, 11/13
FT%	90.0 - ASU, 11/27	50.0 - UK, 12/21
Rebounds	57 - OCU, 11/10	24 - UT, 12/28
Offensive Rebounds	21 - EIU, 2/7	5 - APSU, 2/16
Defensive Rebounds	40 - BET, 12/13	18 - UT, 12/28
Assists	23 - OCU, 11/10; LIP, 11/20	7 - SIU, 12/18; JSU 1/31
Steals	24 - OCU, 11/10	2 - SIUE, 1/19
Turnovers	27 - UK, 12/21	8 - BEL, 1/24
Blocked Shots	5 - LIP, 11/20	1 - 9 Times
Assist/Turnover Ratio	2.5 - LIP, 11/20	0.4 - SIU, 12/18; UTM, 2/21
Fouls	25 - ASU, 11/27	8 - EKU, 2/14

2018-19 TEAM HIGHS & LOWS - OPPONENTS

CATEGORY	HIGH	LOW
Total Points	98 - UT, 12/28	50 - BET, 12/13
Points In A Quarter	35 - [3rd] UT, 12/28	3 - [1st] BET, 12/13
Overtime Points	---	---
FG Made	41 - UT, 12/28	13 - BET, 12/13
FG Attempted	81 - UT, 12/28	55 - SIU, 12/18; EIU, 1/17
FG%	56.5 - ILL, 12/11	22.4 - BET, 12/13
3PT FG Made	11 - MOR, 1/3; APSU, 2/16	1 - TSU, 1/26
3PT FG Attempted	29 - UTM, 2/21	10 - AAMU, 12/1, SEMO, 2/23
3PT FG%	47.6 - UK, 12/21	8.3 - TSU, 1/26
FT Made	22 - TSU, 1/26	2 - EKU, 2/14
FT Attempted	30 - ASU, 11/27	4 - EKU, 2/14
FT%	90.9 - SIU, 12/18	50.0 - EKU, 2/14
Rebounds	56 - UT, 12/28	27 - OCU, 11/10; SIU, 12/18
Offensive Rebounds	25 - UT, 12/28	5 - SIU, 12/18
Defensive Rebounds	34 - AAMU, 12/1; BEL, 1/24	17 - SEMO, 1/12
Assists	23 - ILL, 12/11	6 - UE, 11/7; BET, 12/13
Steals	17 - BUT, 11/13	1 - BEL, 1/24
Turnovers	32 - OCU, 11/10	7 - MOR, 1/3
Blocked Shots	9 - UTM, 2.21	0 - LIP, 11/20, APSU, 2/16
Assist/Turnover Ratio	2.1 - ILL, 12/11; MOR, 1/3	0.3 - OCU, 11/10; LIP, 11/20
Fouls	22 - SEMO, 1/12 & 2/23; UTM, 2/21	12 - BUT, 11/13; ILL, 12/11

2018-19 INDIVIDUAL GAME HIGHS

CATEGORY	MURRAY STATE	OPPONENT
Total Points	32 - Turley (SEMO, 1/12)	31 - Outlow (TSU, 1/26)
Points In A Quarter	14 [3rd] - Adebayo (EKU, 2/14)	17 [3rd] - Howard (UK, 12/21)
Overtime Points	---	---
FG Made	10 - Adebayo (UT, 12/28)	11 - Wittinger (ILL, 12/11); Jeune (MOR, 1/3)
FG Attempted	22 - Adebayo (ILL, 12/11)	23 - Jeune (MOR, 1/3)
3PT FG Made	5 - 3 Times	5 - Howard (UK, 12/21), Bell (SIUE, 1/19)
3PT FG Attempted	12 - Turley (EIU, 2/7)	10 - Bell (SIUE, 1/19); Maggard (BEL, 1/24)
FT Made	11 - Adebayo (UTM, 1/10); Turley (SEMO, 1/12)	12 - Outlow (TSU, 1/26)
FT Attempted	16 - Adebayo (UTM, 1/10)	16 - Robertson (UTM, 1/10)
Rebounds	20 - Adebayo (EIU, 2/7)	13 - 3 Times
Offensive Rebounds	7 - Adebayo (EIU, 2/7)	7 - Davis (UT, 12/28), Bauman (SIUE, 1/19)
Defensive Rebounds	15 - Adebayo (TSU, 1/26)	10 - Wooten (TSU, 1/26)
Assists	9 - Turley (UE, 11/7)	9 - Ferby (APSU, 2/16)
Steals	5 - Turley (UE, 2/21)	5 - 5 Times
Turnovers	10 - Griffith-Wallace, (2/21, UTM)	10 - Ubelhor (OCU, 11/10)
Blocks	3 - Mack (ASU, 11/27)	4 - 5 Times
Minutes	44 - Turley (EIU, 2/7)	45 - Lennox (EIU, 2/7)

2018-19 GAME-BY-GAME INDIVIDUAL HIGHS

Game	Points	Rebounds	Assists	Steals	Blocks
11/7 - Evansville	18 - Adebayo	10 - Adebayo	9 - Turley	3 - Turley	1 - 4 Players
11/10 - Oakland City	18 - Adebayo	13 - Adebayo	7 - Turley	4 - Mack	1 - 2 Players
11/13 - at Butler	15 - Adebayo, Mayes	9 - Adebayo	5 - Turley	3 - Outlaw, Turley	2 - Mack
11/20 - Lipscomb	21 - Turley	9 - Adebayo	6 - Turley	3 - Griffith-Wallace	2 - Burpo
11/27 - at Arkansas St.	18 - Adebayo	9 - Adebayo	5 - Turley	2 - Burpo, Crane	3 - Mack
12/1 - Alabama A&M	15 - Adebayo	10 - Adebayo	4 - Turley	3 - Mayes	1 - 3 Players
12/11 - at Illinois	23 - Adebayo	13 - Adebayo	4 - Turley	2 - Mayes, Adebayo	1 - Manley
12/13 - Bethel (TN)	21 - Adebayo	13 - Adebayo	6 - Turley	3 - Griffith-Wallace	2 - Mack
12//18 - Southern Ill.	17 - Adebayo	8 - Adebayo	5 - Turley	2 - Mayes	2 - Mack
12/21 - at Kentucky	20 - Adebayo	9 - Adebayo	5 - Turley	3 - Griffith-Wallace	1 - Burpo
12/28 - at Tennessee	28 - Adebayo	8 - Crane	4 - Turley	3 - Adebayo	1 - Hill
1/3 - Morehead St.	14 - Turley	10 - Adebayo	3 - Burpo	1 - 5 Players	1 - Adebayo, Mack
1/5 - Eastern Ky.	25 - Adebayo	11 - Adebayo	5 - Griffith-Wallace	3 - Burpo, Mayes	1 - 3 Players
1/10 - at UT Martin	25 - Adebayo	12 - Adebayo	6 - Turley	1 - 4 Players	1 - Mayes, Turley
1/12 - at Southeast Mo.	32 - Turley	10 - Adebayo	3 - Turley, Burpo	3 - Turley	2 - Adebayo
1/17 - at Eastern Ill.	20 - Turley	15 - Adebayo	2 - 4 Players	2 - Turley	1 - Crane
1/19 - at SIUE	20 - Adebayo	14 - Adebayo	4 - Turley	1 - Griffith-Wallace, Turley	1 - Crane, Manley
1/24 - Belmont	20 - Adebayo	11 - Adebayo	5 - Turley	2 - Turley	1 - 3 Players
1/26 - Tennessee St.	20 - Turley	18 - Adebayo	4 - Turley	3 - Turley	1 - 3 Players
1/31 - at Jacksonville State	25 - Griffith-Wallace	15 - Adebayo	3 - Griffith-Wallace, Turley	4 - Griffith-Wallace	1 - Adebayo, Mayes
2/2 -at Tennessee Tech	25 - Adebayo	10 - Adebayo	6 - Griffith-Wallace	1 - 4 Players	1 - Barrett
2/7 - Eastern Ill.	18 - Griffith-Wallace, Turley	20 - Adebayo	3 - Griffith-Wallace, Adebayo	3 - Griffith-Wallace, Crane	1 - Crane
2/9 - SIUE	27 - Adebayo	16 - Adebayo	7 - Turley	3 - Griffith-Wallace	2 - Mack
2/14 - at Eastern Ky.	23 - Adebayo	13 - Adebayo	6 - Turley	2 - Adebayo, Crane	1 - Mack
2/16 - at Austin Peay	22 - Griffith-Wallace	9 - Adebayo	3 - Burpo	2 - Griffith-Wallace, Mayes	2 - Burpo
2/21 - UT Martin	21 - Turley	12 - Adebayo	3 - Griffith-Wallace, Turley	5 - Turley	1 - Mack
2/23 - Southeast Mo.	20 - Griffith-Wallace, Adebayo	10 - Adebayo	7 - Turley	2 - Burpo	1 - Mack
2/28 - at Morehead St.					
3/2 - Austin Peay					

Bold Italics Indicates Team Season-High

2018-19 STARTERS BY GAME

Game						Lineup # (Times Used)
11/7 - Evansville	Turley	Mayes	Outlaw	Crane	Adebayo	1 (1)
11/10 - Oakland City	Turley	Mayes	Griffith-Wallace	Crane	Adebayo	2 (1)
11/13 - at Butler	Turley	Mayes	Outlaw	Crane	Adebayo	1 (2)
11/20 - Lipscomb	Turley	Mayes	Outlaw	Burpo	Adebayo	3 (1)
11/27 - at Arkansas St.	Turley	Mayes	Outlaw	Burpo	Adebayo	3 (2)
12/1 - Alabama A&M	Turley	Mayes	Crane	Burpo	Adebayo	4 (1)
12/11 - at Illinois	Turley	Mayes	Griffith-Wallace	Burpo	Adebayo	5 (1)
12/13 - Bethel (TN)	Turley	Mayes	Griffith-Wallace	Mack	Adebayo	6 (1)
12/18 - Southern Ill.	Turley	Mayes	Griffith-Wallace	Mack	Adebayo	6 (2)
12/21 - at Kentucky	Turley	Mayes	Griffith-Wallace	Mack	Adebayo	6 (3)
12/28 - at Tennessee	Turley	Mayes	Griffith-Wallace	Crane	Adebayo	2 (2)
1/3 - Morehead St.	Turley	Mayes	Griffith-Wallace	Crane	Adebayo	2 (3)
1/5 - Eastern Ky.	Turley	Mayes	Griffith-Wallace	Crane	Adebayo	2 (4)
1/10 - at UT Martin	Turley	Mayes	Griffith-Wallace	Crane	Adebayo	2 (5)
1/12 - at Southeast Mo.	Turley	Mayes	Burpo	Crane	Adebayo	4 (2)
1/17 - at Eastern Ill.	Turley	Mayes	Burpo	Crane	Adebayo	4 (3)
1/19 - at SIUE	Turley	Mayes	Burpo	Crane	Adebayo	4 (4)
1/24 - Belmont	Turley	Mayes	Burpo	Crane	Adebayo	4 (5)
1/26 - Tennessee St.	Turley	Mayes	Burpo	Crane	Adebayo	4 (6)
1/31 - at Jacksonville St.	Turley	Mayes	Griffith-Wallace	Crane	Adebayo	2 (6)
2/2 - at Tennessee Tech	Turley	Mayes	Griffith-Wallace	Crane	Adebayo	2 (7)
2/7 - Eastern Ill.	Turley	Mayes	Griffith-Wallace	Crane	Adebayo	2 (8)
2/9 - SIUE	Turley	Burpo	Griffith-Wallace	Crane	Adebayo	7 (1)
2/14 - at Eastern Ky.	Turley	Burpo	Griffith-Wallace	Crane	Adebayo	7 (2)
2/16 - at Austin Peay	Turley	Burpo	Griffith-Wallace	Crane	Adebayo	7 (3)
2/21 - UT Martin	Turley	Mayes	Griffith-Wallace	Crane	Adebayo	2 (9)
2/23 - Southeast Mo.	Turley	Mayes	Griffith-Wallace	Crane	Adebayo	2 (10)
2/28 - at Morehead St.						
3/2 - Austin Peay						

2018-19 DOUBLE-DOUBLES

Player (DD#)	Game	Category 1	Category 2
Evelyn Adebayo (1)	Evansville	18 Points	10 Rebounds
Evelyn Adebayo (2)	Oakland City	18 Points	13 Rebounds
Evelyn Adebayo (3)	Alabama A&M	15 Points	10 Rebounds
Evelyn Adebayo (4)	Illinois	23 Points	13 Rebounds
Evelyn Adebayo (5)	Bethel (TN)	21 Points	13 Rebounds
Evelyn Adebayo (6)	Eastern Ky.	25 Points	11 Rebounds
Evelyn Adebayo (7)	UT Martin	25 Points	12 Rebounds
Evelyn Adebayo (8)	Southeast Mo.	15 Points	10 rebounds
Evelyn Adebayo (9)	Eastern Ill.	12 Points	15 Rebounds
Evelyn Adebayo (10)	SIUE	20 Points	14 Rebounds
Evelyn Adebayo (11)	Belmont	20 Points	11 Rebounds
Evelyn Adebayo (12)	Tennessee St.	16 Points	18 Rebounds
Evelyn Adebayo (13)	Tennessee Tech	25 Points	10 Rebounds
Evelyn Adebayo (14)	Eastern Ill.	12 Points	20 Rebounds
Evelyn Adebayo (15)	SIUE	27 Points	16 Rebounds
Evelyn Adebayo (16)	Eastern Ky.	23 Points	13 Rebounds
Evelyn Adebayo (17)	UT Martin	18 Points	12 Points
Evelyn Adebayo (18)	Southeast Missouri	20 Points	10 Points
Janika Griffith-Wallace (1)	Bethel (TN)	10 Points	10 Rebounds

2018-19 HONORS

Evelyn Adebayo - F - Jr. OVC Player of the Week - 12/18 OVC Player of the Week - 12/31 OVC Player of the Week - 2/12 College Sports Madness Mid-Major Player of the Week - 2/11 OVC Newcomer of the Week - 11/20 OVC Newcomer of the Week - 12/18 OVC Newcomer of the Week - 12/25 OVC Newcomer of the Week - 12/31 OVC Newcomer of the Week - 1/15 OVC Newcomer of the Week - 1/22 OVC Newcomer of the Week - 1/29 OVC Newcomer of the Week - 2/5 OVC Newcomer of the Week - 2/12 OVC Newcomer of the Week - 2/19 OVC Newcomer of the Week - 2/26	Macey Turley - G - Fr. OVC Freshman of the Week - 11/13 OVC Freshman of the Week - 11/27 OVC Freshman of the Week - 12/18 OVC Freshman of the Week - 1/15 OVC Freshman of the Week - 1/22 OVC Freshman of the Week - 2/12 OVC Freshman of the Week - 2/26	

2018-19 STATISTICS

RECORD:	OVERALL	HOME	AWAY	NEUTRAL
ALL GAMES	12-15	9-5	3-10	0-0
CONFERENCE	8-8	5-3	3-5	0-0
NON-CONFERENCE	4-7	4-2	0-5	0-0

#	Player	gp-gs	min	avg	Total	fg%	3-Point	3fg%	F-Throw	ft%	Rebounds				pf	dq	a	to	blk	stl	pts	avg
					fg-fga		3fg-fga		ft-fa		off	def	tot	avg								
14	Adebayo, Evelyn	27-27	933	34.6	171-364	.470	30-79	.380	125-159	.786	54	260	314	11.6	57	1	36	102	7	24	497	18.4
05	Turley, Macey	27-27	930	34.4	114-315	.362	38-125	.304	97-112	.866	35	61	96	3.6	79	1	118	93	3	36	363	13.4
00	Griffith-Wallace, J.	26-17	725	27.9	103-285	.361	33-98	.337	45-59	.763	16	75	91	3.5	45	1	59	77	2	33	284	10.9
04	Mayes, Lex	27-24	844	31.3	60-175	.343	48-131	.366	35-44	.795	23	50	73	2.7	70	1	31	39	7	29	203	7.5
31	Crane, Brianna	27-21	623	23.1	74-153	.484	0-1	.000	39-56	.696	54	77	131	4.9	41	0	22	37	7	19	187	6.9
44	x-Gibson, Macie	2-0	25	12.5	5-6	.833	0-0	.000	3-4	.750	3	4	7	3.5	2	0	2	0	1	0	13	6.5
20	Mack, Cekeya	27-3	318	11.8	43-77	.558	0-0	.000	26-44	.591	32	49	81	3.0	44	0	6	33	19	13	112	4.1
32	Burpo, Alexis	27-12	538	19.9	38-92	.413	8-35	.229	18-37	.486	37	66	103	3.8	41	0	37	34	10	12	102	3.8
03	x-Outlaw, DeAsia	13-4	143	11.0	14-34	.412	1-4	.250	4-8	.500	4	10	14	1.1	17	0	6	12	1	6	33	2.5
33	Manley, Michaela	24-0	183	7.6	14-44	.318	8-29	.276	5-6	.833	2	10	12	0.5	7	0	10	9	3	7	41	1.7
11	Barrett, Paige	16-0	59	3.7	4-14	.286	0-1	.000	10-10	1.000	9	7	16	1.0	10	0	2	4	2	6	18	1.1
02	x-Hill, Sadie	13-0	47	3.6	3-7	.429	1-2	.500	3-5	.600	0	6	6	0.5	10	0	5	2	4	2	10	0.8
01	Blackburn, Raegan	16-0	56	3.5	2-7	.286	1-4	.250	0-2	.000	0	2	2	0.1	4	0	1	3	0	1	5	0.3
Team											58	66	124					16				
Total.....		27	5424		645-1573	.410	168-509	.330	410-546	.751	327	743	1070	39.6	427	4	335	461	66	188	1868	69.2
Opponents.....		27	5427		689-1704	.404	163-544	.300	316-438	.721	336	658	994	36.8	480	-	366	379	104	239	1857	68.8

x-Inactive player

TEAM STATISTICS	MUR	OPP	Date	Opponent	Score	Att.
SCORING	1868	1857	11/07/18	EVANSVILLE	w 81-53	585
Points per game	69.2	68.8	11/10/18	OAKLAND CITY	w 113-55	938
Scoring margin	+0.4	-	11/13/18	at Butler	L 65-86	484
FIELD GOALS-ATT	645-1573	689-1704	11/20/18	LIPSCOMB	w 97-61	448
Field goal pct	.410	.404	11/27/18	at Arkansas St.	L 63-74	719
3 POINT FG-ATT	168-509	163-544	12/01/18	ALABAMA A&M	L 53-59	762
3-point FG pct	.330	.300	12/11/18	at Illinois	L 52-84	986
3-pt FG made per game	6.2	6.0	12/13/18	BETHEL (TN)	w 86-50	432
FREE THROWS-ATT	410-546	316-438	12/18/18	SOUTHERN ILL.	L 59-65	0
Free throw pct	.751	.721	12/21/18	at Kentucky	L 49-88	4312
F-Throws made per game	15.2	11.7	12/28/18	at Tennessee	L 77-98	8518
REBOUNDS	1070	994	* 01/03/19	MOREHEAD ST.	L 61-83	716
Rebounds per game	39.6	36.8	* 01/05/19	EASTERN KY.	w 81-63	2852
Rebounding margin	+2.8	-	* 01/10/19	at UT Martin	L 67-75	2921
ASSISTS	335	366	* 01/12/19	at Southeast Mo. St.	w 64-59	603
Assists per game	12.4	13.6	* 01/17/19	at Eastern Ill.	L 67-75	150
TURNOVERS	461	379	* 01/19/19	at SIUE	L 54-71	497
Turnovers per game	17.1	14.0	* 01/24/19	BELMONT	L 58-65	3071
Turnover margin	-3.0	-	* 01/26/19	TENNESSEE ST.	L 61-65	3614
Assist/turnover ratio	0.7	1.0	* 01/31/19	at Jacksonville St.	w 64-59	888
STEALS	188	239	* 02/02/19	at Tennessee Tech	L 65-74	4087
Steals per game	7.0	8.9	* 02/07/19	EASTERN ILL.	Wot 60-51	1804
BLOCKS	66	104	* 02/09/19	SIUE	w 81-75	1651
Blocks per game	2.4	3.9	* 02/14/19	at Eastern Ky.	w 76-63	220
ATTENDANCE	18880	24808	* 02/16/19	at Austin Peay	L 56-59	423
Home games-Avg/Game	14-1349	13-1908	* 02/21/19	UT MARTIN	w 76-73	782
Neutral site-Avg/Game	-	0-0	* 02/23/19	SOUTHEAST MO. ST.	w 82-74	1225

Score by Periods	1st	2nd	3rd	4th	OT	Totals
Murray St.	454	425	490	488	11	1868
Opponents	394	469	529	463	2	1857

* - OVC game

2018-19 OVC STATISTICS

RECORD:	OVERALL	HOME	AWAY	NEUTRAL
ALL GAMES	8-8	5-3	3-5	0-0
CONFERENCE	8-8	5-3	3-5	0-0
NON-CONFERENCE	0-0	0-0	0-0	0-0

#	Player	gp-gs	min	avg	Total		3-Point		F-Throw		Rebounds											
					fg-fga	fg%	3fg-fga	3fg%	ft-fa	ft%	off	def	tot	avg	pf	dq	a	to	blk	stl	pts	avg
14	Adebayo, Evelyn	16-16	596	37.2	99-214	.463	21-53	.396	72-93	.774	33	173	206	12.9	39	0	23	65	6	11	291	18.2
05	Turley, Macey	16-16	573	35.8	66-190	.347	26-77	.338	77-88	.875	25	35	60	3.8	50	1	58	56	1	20	235	14.7
00	Griffith-Wallace, J.	16-11	459	28.7	66-175	.377	22-60	.367	37-48	.771	9	47	56	3.5	29	1	34	49	2	18	191	11.9
04	Mayes, Lex	16-13	515	32.2	33-92	.359	29-73	.397	19-23	.826	15	32	47	2.9	42	1	17	20	4	12	114	7.1
31	Crane, Brianna	16-16	381	23.8	43-95	.453	0-1	.000	19-30	.633	35	39	74	4.6	34	0	14	19	4	11	105	6.6
20	Mack, Cekeya	16-0	158	9.9	19-35	.543	0-0	.000	14-27	.519	18	21	39	2.4	23	0	3	23	7	2	52	3.3
32	Burpo, Alexis	16-8	334	20.9	16-47	.340	2-22	.091	14-28	.500	22	42	64	4.0	27	0	20	18	6	7	48	3.0
03	x-Outlaw, DeAsia	6-0	36	6.0	6-12	.500	0-2	.000	0-2	.000	0	6	6	1.0	6	0	2	4	0	0	12	2.0
33	Manley, Michaela	16-0	107	6.7	7-25	.280	4-17	.235	2-2	1.000	2	3	5	0.3	4	0	4	6	2	3	20	1.3
02	x-Hill, Sadie	4-0	7	1.8	0-0	.000	0-0	.000	3-5	.600	0	1	1	0.3	3	0	1	1	0	0	3	0.8
11	Barrett, Paige	8-0	26	3.3	0-2	.000	0-0	.000	2-2	1.000	3	2	5	0.6	3	0	1	1	1	3	2	0.3
01	Blackburn, Raegan	10-0	33	3.3	0-3	.000	0-3	.000	0-2	.000	0	1	1	0.1	3	0	1	2	0	0	0	0.0
	Team										41	39	80				9					
	Total.....	16	3225		355-890	.399	104-308	.338	259-350	.740	203	441	644	40.2	263	3	178	273	33	87	1073	67.1
	Opponents.....	16	3225		394-1011	.390	97-346	.280	199-270	.737	212	375	587	36.7	298	-	215	191	72	139	1084	67.8

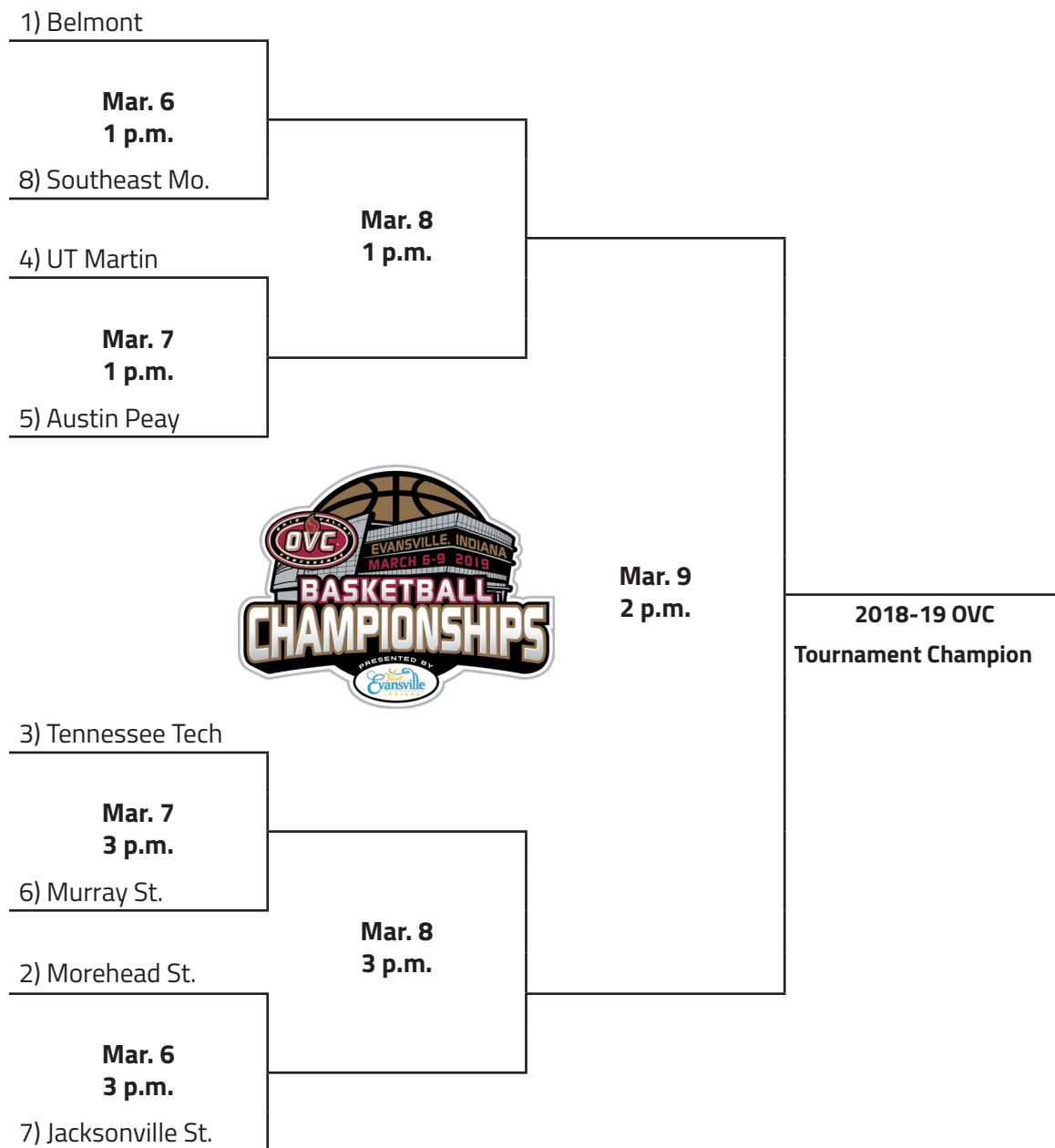
x-Inactive player

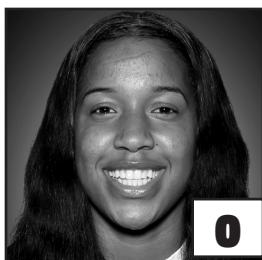
TEAM STATISTICS	MUR	OPP	Date	Opponent	Score	Att.
SCORING	1073	1084	* 01/03/19	MOREHEAD ST.	L 61-83	716
Points per game	67.1	67.8	* 01/05/19	EASTERN KY.	w 81-63	2852
Scoring margin	-0.7	-	* 01/10/19	at UT Martin	L 67-75	2921
FIELD GOALS-ATT	355-890	394-1011	* 01/12/19	at Southeast Mo. St.	w 64-59	603
Field goal pct	.399	.390	* 01/17/19	at Eastern Ill.	L 67-75	150
3 POINT FG-ATT	104-308	97-346	* 01/19/19	at SIUE	L 54-71	497
3-point FG pct	.338	.280	* 01/24/19	BELMONT	L 58-65	3071
3-pt FG made per game	6.5	6.1	* 01/26/19	TENNESSEE ST.	L 61-65	3614
FREE THROWS-ATT	259-350	199-270	* 01/31/19	at Jacksonville St.	w 64-59	888
Free throw pct	.740	.737	* 02/02/19	at Tennessee Tech	L 65-74	4087
F-Throws made per game	16.2	12.4	* 02/07/19	EASTERN ILL.	Wot 60-51	1804
REBOUNDS	644	587	* 02/09/19	SIUE	w 81-75	1651
Rebounds per game	40.2	36.7	* 02/14/19	at Eastern Ky.	w 76-63	220
Rebounding margin	+3.6	-	* 02/16/19	at Austin Peay	L 56-59	423
ASSISTS	178	215	* 02/21/19	UT MARTIN	w 76-73	782
Assists per game	11.1	13.4	* 02/23/19	SOUTHEAST MO. ST.	w 82-74	1225
TURNOVERS	273	191	* - OVC game			
Turnovers per game	17.1	11.9				
Turnover margin	-5.1	-				
Assist/turnover ratio	0.7	1.1				
STEALS	87	139				
Steals per game	5.4	8.7				
BLOCKS	33	72				
Blocks per game	2.1	4.5				
ATTENDANCE	15715	9789				
Home games-Avg/Game	8-1964	8-1224				
Neutral site-Avg/Game	-	0-0				

Score by Periods	1st	2nd	3rd	4th	OT	Totals
Murray St.	275	246	274	267	11	1073
Opponents	250	253	293	286	2	1084

IF THE SEASON ENDED TODAY...

...Here is what the 2019 OVC Championship field would look like:





**JANIKA
GRIFFITH-WALLACE**
G ■ 5-9 ■ So.
Brampton, Ontario



**REAGAN
BLACKBURN**
G ■ 5-8 ■ Fr.
Greenville, Ky.



**SADIE
HILL**
G/F ■ 6-0 ■ Fr.
Indianapolis, Ind



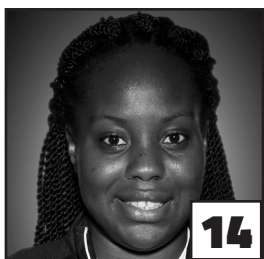
**LEX
MAYES**
G ■ 5-7 ■ Fr.
Murray, Ky.



**MACEY
TURLEY**
G ■ 5-6 ■ Fr.
Murray, Ky.



**PAIGE
BARRETT**
G/F ■ 5-10 ■ So.
Scottsburg, Ind.



**EVELYN
ADEBAYO**
F ■ 6-0 ■ R-Jr.
London, England



**CEKEYA
MACK**
F ■ 6-1 ■ Jr.
Murray, Ky.



**BRIANNA
CRANE**
F ■ 6-0 ■ So.
Birmingham, Ala.



**ALEXIS
BURPO**
F/G ■ 5-10 ■ Fr.
Murray, Ky.



**MICHAELA
MANLEY**
G ■ 5-10 ■ Sr.
Benton, Ky.



**MACIE
GIBSON**
F ■ 6-1 ■ Fr.
Booneville, Ky.



**RECHELLE
TURNER**
Head Coach
2nd Season



**MONICA
EVANS**
Assistant Coach
2nd Season



**AMBER
GUFFEY**
Assistant Coach
2nd Season



**JAUWAN
SCAIFE**
Assistant Coach
1st Season