



MURRAY ST. RACERS VS. OAKLAND CITY MIGHTY OAKS

Murray, Ky.; CFSB Center
 Saturday, Nov. 10, 2018; 5 p.m.
 TV/Web: ESPN+
 Live Audio: WNBS 1340 AM
 (PxP - Jeremy Rose)



2018-19 SCHEDULE

| Date | Opponent | Time /Result |
|--------------|----------------------|---------------|
| 11/1 | #LINDSEY WILSON | W 72-51 |
| 11/7 | EVANSVILLE | W 81-53 |
| 11/10 | OAKLAND CITY | 5 p.m. |
| 11/13 | at Butler | 6 p.m. |
| 11/20 | LIPSCOMB | 6 p.m. |
| 11/27 | at Arkansas St. | 7 p.m. |
| 12/1 | ALABAMA A&M | 5 p.m. |
| 12/11 | at Illinois | 7 p.m. |
| 12/13 | BETHEL (TN) | 6 p.m. |
| 12/18 | SOUTHERN ILL. | 5 p.m. |
| 12/21 | at Kentucky | 11 a.m. |
| 12/28 | at Tennessee | 6 p.m. |
| 1/3 | *MOREHEAD ST. | 5 p.m. |
| 1/5 | *EASTERN KY. | 5 p.m. |
| 1/10 | *at UT Martin | 5:30 p.m. |
| 1/12 | *at Southeast Mo. | 2 p.m. |
| 1/17 | *at Eastern Ill. | 5:15 p.m. |
| 1/19 | *at SIUE | 5:15 p.m. |
| 1/24 | *BELMONT | 2 p.m. |
| 1/26 | *TENNESSEE ST. | 5 p.m. |
| 1/31 | *at Jacksonville St. | 5 p.m. |
| 2/2 | *at Tennessee Tech | 11:30 p.m. |
| 2/7 | *EASTERN ILLINOIS | 5:30 p.m. |
| 2/9 | *SIUE | 5 p.m. |
| 2/14 | *at Eastern Ky. | 4 p.m. |
| 2/16 | *at Austin Peay | 2 p.m. |
| 2/21 | *UT MARTIN | 5 p.m. |
| 2/23 | *SOUTHEAST MO. | 5 p.m. |
| 2/28 | *at Morehead St. | 4:05 p.m. |
| 3/1 | *AUSTIN PEAY | 5 PM |
| 3/6-9 | OVC Tournament | TBD |

* - OVC Contest
 # - Exhibition

2018-19 OVC STANDINGS

| Team | OVC | Overall |
|-------------------|------------|------------|
| Eastern Ill. | 0-0 | 1-0 |
| Jacksonville St. | 0-0 | 1-0 |
| Murray St. | 0-0 | 1-0 |
| Tennessee Tech | 0-0 | 1-0 |
| UT Martin | 0-0 | 1-0 |
| Eastern Ky. | 0-0 | 0-0 |
| Morehead St. | 0-0 | 0-0 |
| SIUE | 0-0 | 0-0 |
| Tennessee St. | 0-0 | 0-1 |
| Austin Peay | 0-0 | 0-1 |
| Belmont | 0-0 | 0-1 |
| Southeast Mo. | 0-0 | 0-1 |

As of Nov. 9

MURRAY STATE PROBABLE STARTERS

| No. | Name | Pos. | GP/GS | FG% | 3FG% | FT% | RPG | APG | PPG |
|-----|----------------|------|-------|------|------|------|------|-----|------|
| 3 | DeAsia Outlaw | G | 1/1 | .500 | 1.00 | .000 | 2.0 | 3.0 | 5.0 |
| 4 | Lex Mayes | G | 1/1 | .500 | .500 | .000 | 2.0 | 3.0 | 9.0 |
| 5 | Macey Turley | G | 1/1 | .857 | .800 | .000 | 6.0 | 9.0 | 16.0 |
| 14 | Evelyn Adebayo | F | 1/1 | .450 | .000 | .000 | 10.0 | 1.0 | 18.0 |
| 31 | Brianna Crane | F | 1/1 | .375 | .000 | .750 | 6.0 | 1.0 | 9.0 |

Key Reserves

| | | | | | | | | | |
|-------------|-------------------------|---|----------|-------------|-------------|-------------|-------------|-------------|-------------|
| 0 | Janika Griffith-Wallace | G | 1/0 | .357 | .400 | 1.00 | 4.0 | 4.0 | 13.0 |
| 20 | Cekeya Mack | F | 1/0 | .000 | .000 | 1.00 | 3.0 | 0.0 | 2.0 |
| 44 | Macie Gibson | F | 1/0 | 1.00 | .000 | .500 | 5.0 | 1.0 | 5.0 |
| Team | | | 1 | .478 | .500 | .700 | 45.0 | 22.0 | 81.0 |

OAKLAND CITY PROBABLE STARTERS

| No. | Name | Pos. | GP/GS | FG% | 3FG% | FT% | RPG | APG | PPG |
|-----|-------------------|------|-------|------|------|------|-----|-----|------|
| 5 | Shannon Pittman | F | --- | --- | --- | --- | --- | --- | --- |
| 12 | Reanne Kietlinski | F | --- | --- | --- | --- | --- | --- | --- |
| 21 | Maddie Uberlhor | G | 4/0 | .432 | .278 | .750 | 4.5 | 1.8 | 10.0 |
| 23 | Kayla Sanford | G | --- | --- | --- | --- | --- | --- | --- |
| 35 | Xerena Tompkins | G | 10.0 | .409 | .000 | .583 | 2.8 | 1.0 | 2.5 |

Key Reserves

| | | | | | | | | | |
|-------------|-----------------|---|-----------|-------------|-------------|-------------|-------------|-------------|-------------|
| 2 | Julyen Condra | G | --- | --- | --- | --- | --- | --- | --- |
| 34 | Aricka Prentice | G | 23/23 | .416 | .328 | .757 | 6.3 | 2.0 | 12.0 |
| 44 | Sarah Dudzinski | G | 23/10 | .373 | .351 | .833 | 3.2 | 2.1 | 6.7 |
| Team | | | 23 | .427 | .342 | .779 | 41.1 | 18.3 | 74.0 |

All stats are final from 2017-18

2018 RECORD BREAKDOWN

| | Record | Home | Away | Neutral | OT |
|----------------|------------|------------|------------|------------|------------|
| Overall | 1-0 | 1-0 | 0-0 | 0-0 | 0-0 |
| OVC | 0-0 | 0-0 | 0-0 | 0-0 | 0-0 |

SEASON STREAKS

Overall: Won 1 Home: Won 1 Away: --- Neutral: --- OT: ---

OVERALL STREAKS

Overall: Won 1 Home: Won 2 Away: Lost 1 Neutral: Lost 1 OT: Lost 1

UPCOMING SCHEDULE

| DATE | OPPONENT | SITE | TIME | WEB | RADIO |
|---------|--------------|---|--------|-------|----------|
| Nov. 13 | Butler | Indianapolis, Ind. (Hinkle Fieldhouse) | 6 p.m. | | 1340 AM |
| Nov. 20 | Lipscomb | Murray, Ky. (CFSB Center) | 6 p.m. | ESPN+ | 1340 AM |
| Nov. 27 | Arkansas St. | Jonesboro, Ark. (First National Bank Arena) | 7 p.m. | | 1340 AM |
| Dec. 1 | Alabama A&M | Murray, Ky. (CFSB Center) | 5 p.m. | ESPN+ | 1340 AM |
| Dec. 11 | Illinois | Champaign, Ill. (State Farm Center) | 7 p.m. | | 104.5 FM |

LAST TIME OUT

vs. Evansville (W 81-53)

Nov. 7 at CFSB Center

MURRAY, Ky. - Murray State got its 2018-19 season off to a rocking start with an 81-53 win over Evansville Wednesday night. The Racers defense shut down Evansville right out of the gates limiting them to just three baskets on 17.6 shooting from the floor in the first quarter. Meanwhile, the Racers shot over 40-percent from the floor in three of four quarters, including 10-of-16 for 62.5 percent in the third, to finish the night at 47.8 percent. Evelyn Adebayo began her Murray State career with a double-double posting game highs of 18 points and 10 rebounds. Macey Turley almost had one of her own in her debut with 16 points, nine assists and six rebounds. Janika Griffith-Wallace rounded out Murray State's double digit scorers with 13 points to go along with four rebounds and four assists

TODAY'S OPPONENT:

vs. Oakland City Mighty Oaks


Nov. 10, 2018

5 p.m.

CFSB Center

SERIES HISTORY: Saturday will be just the second all-time meeting between the two teams, with the Racers winning the lone previous meeting, 91-75, in the 2015-16 season opener.

SCOUTING REPORT: Oakland City was 11-12 last season and lost in the first round of the NCCAA Mid-east regional. The Mighty Oaks return just five players from last year's team, led by Aricka Prentice who finished second on the team last year in both points and rebounds at 12.0 and 6.3, respectively. In their lone exhibition thus far this season, the Mighty Oaks fell to fellow OVC member Eastern Illinois, 102-43. Kayla Sanford led Oakland City in the game with eight points, while Shannon Pittman followed with seven points and four rebounds.

| MURRAY STATE VS. OAKLAND CITY | | RACERS - 1 WIN, MIGHTY OAKS - 0 WINS | |
|---|---|--|--|
|  | <u>Evansville Quick Facts</u> | | |
| | Founded: 1885 Location: Oakland City, Ind. Colors: White & Columbia Blue Enrollment: 2,350 | Conference: NCAA DII Independent Arena: Johnson Center (1,600) 2017-18 Rec.: 11-12 Postseason: NCCAA Reg. 1st Rd. | Head Coach: Shayne Ross Alma Mater: Charleston So. '11 Overall Record (season): 28-19 (3rd) OCU Record (season): Same |
| <u>Last 3 vs. OCU:</u> 11/13/15 @MSU W 91-75 | <u>Current Streaks vs. OCU:</u> Overall: Won 1 Home: Won 1 Away: --- | <u>All-Time vs. OCU:</u> Home: 1-0 Away: 0-0 Neutral: 0-0 | <u>MSU-OCU Series Misc.:</u> First Meeting: 11/13/15 @MSU W 91-75 Largest MSU Win: 11/13/15 @MSU W 91-75 Largest OCU Win: --- |

2018-19 MURRAY STATE ROSTER

| No. | Player | Pos. | Ht. | Yr. | Hometown (Previous School) |
|-----|-------------------------|------|------|-----|---|
| 0 | Janika Griffith-Wallace | G | 5-9 | So. | Brampton, Ontario (Tech Academy at Sault Ste Marie) |
| 1 | Raegan Blackburn | G | 5-8 | Fr. | Greenville, Ky. (Muhlenberg County HS) |
| 2 | Sadie Hill | F/G | 6-0 | Fr. | Indianapolis, Ind. (Perry Meridian HS) |
| 3 | DeAsia Outlaw | G | 5-11 | Jr. | Henderson, Ky. (Wabash Valley CC) |
| 4 | Lex Mayes | G | 5-7 | Fr. | Murray, Ky. (Murray HS) |
| 5 | Macey Turley | G | 5-6 | Fr. | Murray, Ky. (Murray HS) |
| 11 | Paige Barrett | G/F | 5-10 | So. | Scottsburg, Ind. (Scottsburg HS) |
| 14 | Evelyn Adebayo | F | 6-0 | Jr. | London, England (Gardner-Webb) |
| 20 | Cekeya Mack | F | 6-0 | Jr. | Albany, Ga. (Albany Tech) |
| 31 | Brianna Crane | F | 6-0 | So. | Birmingham, Ala. (Ramsay HS) |
| 32 | Alexis Burpo | F/G | 5-10 | Fr. | Murray, Ky. (Murray HS) |
| 33 | Michaela Manley | G | 5-10 | Sr. | Benton, Ky. (Marshall County HS) |
| 44 | Macie Gibson | F | 6-1 | Fr. | Booneville, Ky. (Owsley County HS) |

Head Coach: Rechelle Turner (Murray St., 1996), 2nd Season

Assistant Coaches: Amber Guffey (Murray St., 2009), 2nd Season;
Jauwan Scaife (Ball St., 2012), 1st Season; Monica Evans, 2nd Season

PRONUNCIATION GUIDE

JANIKA Griffith-Wallace Juh-nee-kuh
 Evelyn ADEBAYO..... Add-uh-buy-oh
 CEKEYA Mack..... Suh-key-uh
 RECHELLE Turner Ruh-shell
 JAUWAN Scaife..... Juh-wahn

2018-19 OAKLAND CITY ROSTER

| No. | Name | Pos. | Ht. | Cl. | Hometown (Previous School) |
|-----|-------------------|------|-----|------|---------------------------------------|
| 2 | Julyen Condra | Fr. | G | 6-0 | New Albany, Ind. (New Albany HS) |
| 5 | Shannon Pittman | Jr. | F | 5-10 | Lyons, Ind. (Earlham) |
| 12 | Reanne Kietlinski | Fr. | G | 5-8 | Birnamwood, Wis. (Bowler HS) |
| 21 | Maddie Ubelhor | Sr. | G | 5-10 | Jasper, Ind. (Wabash Valley) |
| 23 | Kayla Sanford | Jr. | G | 5-9 | Wadesville, Ind. (Olney Central Col.) |
| 24 | Emma Lander | So. | F | 6-0 | Henderson, Ky. (Henderson Co. HS) |
| 34 | Aricka Prentice | Sr. | G | 5-9 | Louisville, Ky. (duPont Manual HS) |
| 35 | Xerena Tompkins | So. | F | 6-1 | Fowler, Ind. (Benton Central HS) |
| 44 | Sarah Dudzinski | Sr. | G | 5-7 | Charlotte, N.C. (Chaminade) |

Head Coach: Shayne Ross (Charleston So., 2011), 3rd Season

Assistant Coach: Mike Janikowski, 2nd Season

THE INSIDE TRACK

GAME 2 NOTES - OCU

OPENING STATEMENT

MSU's win Wednesday was the first in a season opener against a Division I team since beating the Purple Aces to start the 2011-12 season, as well as the largest margin of victory against any Division I opponents since a 32 point win over Alabama A&M in 2016-17.

HISTORIC DEBUT

With game-highs of 18 points and 10 rebounds, Evelyn Adebayo became the first known Racer to debut with a double-double (single-game records dating back to 1997-98) Wednesday versus Evansville.

QUICK TURNAROUND

In Wednesday's opener, the Racers addressed two areas of concerns from the exhibition Thursday night, three-point and free throw shooting. The Racers were just 1-for-13 (7.7%) from three and 19-for-35 (54.3%) in their lone exhibition. However, on Wednesday, MSU was 7-for-10 (70.0%) from the stripe and 10-for-20 (50.0 %) from beyond the arc.

OK, WHAT'S NEXT?

Murray State hits the road for the first time this season Tuesday, when it travels to one of America's great basketball cathedrals, Hinkle Fieldhouse in Indianapolis, Indiana, to take on Butler. Tip-off from the site of the Hickory Huskers' historic upset in the 1952 Indiana state championship game is set for 6 p.m. CT.

GAME 1 -NOTES - UE

LIFTING THE LID

Murray State opens its 52nd season of women's basketball Wednesday and is 22-30 all-time in season openers and 26-23 in home openers. The Racers are 4-4 all-time against UE in season openers and 3-3 against the Purple Aces in home openers.

SHAKING THE DUST OFF

The Racers won their only exhibition of the year last Thursday, 72-51 over Lindsey Wilson. After sitting out last season due to NCAA transfer rules, Evelyn Adebayo easily got back in the groove and led MSU with 21 points, while Janika Griffith-Wallace posted a double-double with 13 points and 11 rebounds.

NEXT ONE UP

The Racers return just 20.4 percent of their scoring from last year with the most notable loss being the 2017-18 OVC Player of the Year, Ke'Shunna James. Brianna Crane will lead all returners this season after averaging 7.2 points and 5.7 rebounds per game last season.

HEAD COACH RECEHELLE TURNER

2ND SEASON AT MSU/2ND SEASON OVERALL

TURNER'S CAREER YEAR-BY-YEAR COACHING RECORD

| Year | Team | OVERALL | | | OVC | | | POSTSEASON | | |
|--------------|------------|-----------|-----------|-------------|----------|-----------|-------------|------------|----------|-------------|
| | | W | L | Pct. | W | L | Pct. | W | L | Pct. |
| 2017-18 | Murray St. | 11 | 19 | .367 | 7 | 11 | .389 | 0 | 1 | .000 |
| 2018-19 | Murray St. | 1 | 0 | 1.00 | --- | --- | .000 | - | - | .000 |
| TOTAL | | 12 | 19 | .381 | 7 | 11 | .389 | 0 | 1 | .000 |
| OT | | 0 | 1 | .000 | 0 | 1 | .000 | 0 | 1 | .000 |

TURNER VS. THE COMPETITION

| OPPONENT | RECORD | OPPONENT | RECORD |
|----------------------------|------------|----------------------------|------------|
| Austin Peay* | 1-1 | Lipscomb | 0-1 |
| Alabama | 1-0 | Louisville | 0-1 |
| Alabama A&M | 0-1 | Mississippi Valley St. | 1-0 |
| Arkansas St. | 0-0 | Morehead St.* | 0-2 |
| Belmont* | 0-2 | UNC Greensboro | 1-0 |
| Bethel (TN) | 1-0 | Oakland City | 0-0 |
| Butler | 0-1 | Northern Kentucky | 1-0 |
| Evansville | 1-1 | Southern Illinois | 0-0 |
| ETSU | 0-1 | SIUE* | 0-2 |
| Eastern Illinois* | 2-0 | Southeast Missouri* | 0-2 |
| Eastern Kentucky* | 1-0 | Tennessee | 0-0 |
| Illinois | 0-0 | Tennessee State* | 1-0 |
| Jacksonville State* | 0-2 | Tennessee Tech* | 2-0 |
| Kentucky | 0-0 | UT Martin* | 0-2 |

2018 Opponents Listed In BOLD

*Indicates OVC Opponent

THE RACERS ARE....

| | | | | | |
|-----|----------------------------------|-----|----------------------------------|-----|--------------------------------------|
| 1-0 | ...Overall | 1-0 | ...Bench outscored by Opp. bench | 1-0 | ...in November |
| | ...vs. OVC | | ...Tied, bench scoring | | ...in December |
| 1-0 | ...vs. Non-Conference | 1-0 | ...Outrebound Opponent | | ...in January |
| | | | ...Outrebounded by Opponent | | ...in February |
| | | | ...Tied, rebounds | | ...in March |
| | | 1-0 | ...More FTM than Opponent | | ...on Mondays |
| 1-0 | ...Leading at Half | | ...Less FTM than Opponent | | ...on Tuesdays |
| | ...Trailing at Half | | ...Tied, FTM | | ...on Wednesdays |
| | ...Tied at Half | 1-0 | ...More 3FGM than Opponent | 1-0 | ...on Thursdays |
| | ...In Overtime | | ...Less 3FGM than Opponent | | ...on Fridays |
| 1-0 | ...Outshoot Opponent (%) | | ...Tied, 3FGM | | ...on Saturdays |
| | ...Outshot by Opponent (%) | | ...More turnovers than Opponent | | ...on Sundays |
| | ...Tied opponent, shooting (%) | 1-0 | ...Less turnovers than Opponent | | |
| 1-0 | ...Shoot .400 or better | | ...Tied, turnovers | | |
| | ...Shoot under .400 | | ...Score ≤ 60 | | ...in the Afternoon (Before 4 p.m.) |
| | ...Opponent shoot .400 or better | 1-0 | ...Score 75+ | 1-0 | ...in the Evenings (4 p.m. or After) |
| 1-0 | ...Opponent shoot under .400 | 1-0 | ...Opponents Score ≤ 60 | | |
| | ...Bench outscores Opp. bench | | ...Opponents Score 75+ | | |

2018 SCORE BY QUARTERS

| | 1st Qtr. | 2nd Qtr. | 3rd Qtr. | 4th Qtr. | OT | Total |
|-------------------|----------|----------|----------|----------|-----|-------|
| Murray St. | 19 | 17 | 26 | 19 | 0 | 81.0 |
| Avg. | 19.0 | 17.0 | 26.0 | 19.0 | 0.0 | 81.0 |
| Opponents | 8 | 14 | 20 | 11 | 0 | 53 |
| Avg. | 8.0 | 14.0 | 20.0 | 11.0 | 0.0 | 53.0 |

BENCH SCORING

| RACERS | OPPONENTS |
|---|---|
| Season Avg.: 24.0 | Season Avg.: 25.0 |
| Team High: 24.0 (UE, 11/7) | Team High: 25.0 (UE, 11/7) |
| Team Low: 24.0 (UE, 11/7) | Team Low: 25.0 (UE, 11/7) |
| Individual High: 13 - Griffith-Wallace (UE, 11/7) | Individual High: 16 - Wallace UE, 11/7) |

2018 WON-LOST MARGINS

| Margin | 1 | 2 | 3 | 4 | 5 | 6 | 7 | 8 | 9 | 10 | 11 | 12 | 13 | 14 | 15 |
|----------------|----|----|----|----|----|----|----|----|----|----|----|----|----|----|-----|
| Won By | | | | | | | | | | | | | | | |
| Lost By | | | | | | | | | | | | | | | |
| Margin | 16 | 17 | 18 | 19 | 20 | 21 | 22 | 23 | 24 | 25 | 26 | 27 | 28 | 29 | 30+ |
| Won By | | | | | | | | | | | | | 1 | | |
| Lost By | | | | | | | | | | | | | | | |

2018-19 TEAM HIGHS & LOWS - RACERS

| CATEGORY | HIGH | LOW |
|-----------------------|---------------------|---------------------|
| Total Points | 81 - UE, 11/7 | 81 - UE, 11/7 |
| Points In A Quarter | 26 [3rd] - UE, 11/7 | 26 [3rd] - UE, 11/7 |
| Overtime Points | --- | --- |
| FG Made | 32 - UE, 11/7 | 32 - UE, 11/7 |
| FG Attempted | 67 - UE, 11/7 | 67 - UE, 11/7 |
| FG% | 47.8 - UE, 11/7 | 47.8 - UE, 11/7 |
| 3PT FG Made | 10 - UE, 11/7 | 10 - UE, 11/7 |
| 3PT FG Attempted | 20 - UE, 11/7 | 20 - UE, 11/7 |
| 3PT FG% | 50.0 - UE, 11/7 | 50.0 - UE, 11/7 |
| FT Made | 7 - UE, 11/7 | 7 - UE, 11/7 |
| FT Attempted | 10 - UE, 11/7 | 10 - UE, 11/7 |
| FT% | 70.0 - UE, 11/7 | 70.0 - UE, 11/7 |
| Rebounds | 45 - UE, 11/7 | 45 - UE, 11/7 |
| Offensive Rebounds | 12 - UE, 11/7 | 12 - UE, 11/7 |
| Defensive Rebounds | 33 - UE, 11/7 | 33 - UE, 11/7 |
| Assists | 22 - UE, 11/7 | 22 - UE, 11/7 |
| Steals | 4 - UE, 11/7 | 4 - UE, 11/7 |
| Turnovers | 12 - UE, 11/7 | 12 - UE, 11/7 |
| Blocked Shots | 4 - UE, 11/7 | 4 - UE, 11/7 |
| Assist/Turnover Ratio | 1.8 - UE, 11/7 | 1.8 - UE, 11/7 |
| Fouls | 12 1.8 - UE, 11/7 | 12 1.8 - UE, 11/7 |

2018-19 TEAM HIGHS & LOWS - OPPONENTS

| CATEGORY | HIGH | LOW |
|-----------------------|---------------------|---------------------|
| Total Points | 53 - UE, 11/7 | 53 - UE, 11/7 |
| Points In A Quarter | 20 [3rd] - UE, 11/7 | 20 [3rd] - UE, 11/7 |
| Overtime Points | --- | --- |
| FG Made | 22 - UE, 11/7 | 22 - UE, 11/7 |
| FG Attempted | 62 - UE, 11/7 | 62 - UE, 11/7 |
| FG% | 35.5 - UE, 11/7 | 35.5 - UE, 11/7 |
| 3PT FG Made | 3 - UE, 11/7 | 3 - UE, 11/7 |
| 3PT FG Attempted | 15 - UE, 11/7 | 15 - UE, 11/7 |
| 3PT FG% | 20.0 - UE, 11/7 | 20.0 - UE, 11/7 |
| FT Made | 6 - UE, 11/7 | 6 - UE, 11/7 |
| FT Attempted | 8 - UE, 11/7 | 8 - UE, 11/7 |
| FT% | 75.0 - UE, 11/7 | 75.0 - UE, 11/7 |
| Rebounds | 32 - UE, 11/7 | 32 - UE, 11/7 |
| Offensive Rebounds | 7 - UE, 11/7 | 7 - UE, 11/7 |
| Defensive Rebounds | 25 - UE, 11/7 | 25 - UE, 11/7 |
| Assists | 6 - UE, 11/7 | 6 - UE, 11/7 |
| Steals | 5 - UE, 11/7 | 5 - UE, 11/7 |
| Turnovers | 13 - UE, 11/7 | 13 - UE, 11/7 |
| Blocked Shots | 5 - UE, 11/7 | 5 - UE, 11/7 |
| Assist/Turnover Ratio | 0.4 - UE, 11/7 | 0.4 - UE, 11/7 |
| Fouls | 16 - UE, 11/7 | 16 - UE, 11/7 |

2018-19 INDIVIDUAL GAME HIGHS

| CATEGORY | MURRAY STATE | OPPONENT |
|----------------------------|---------------------------------|--|
| Total Points | 18 - Adebayo (UE, 11/7) | 16 - Wallace (UE, 11/7) |
| Points In A Quarter | 8 [3rd] - Adebayo (UE, 11/7) | 7 [3rd] - Wallace (UE, 11/7) |
| Overtime Points | --- | --- |
| FG Made | 9 - Adebayo (UE, 11/7) | 7 - Wallace (UE, 11/7) |
| FG Attempted | 20 - Adebayo (UE, 11/7) | 12 - Neman (UE, 11/7) |
| 3PT FG Made | 4 - Turley (UE, 11/7) | 1 - 3 Players (UE, 11/7) |
| 3PT FG Attempted | 6 - Mayes (UE, 11/7) | 4 - Newman (UE, 11/7) |
| FT Made | 3 - Crane (UE, 11/7) | 2 - Bishop, Wallace (UE, 11/7) |
| FT Attempted | 4 - Crane (UE, 11/7) | 3 - Wallace 6 - Buck, Coffman (UE, 11/7) |
| Rebounds | 10 - Adebayo (UE, 11/7) | 6 - Buck, Coffman (UE, 11/7) |
| Offensive Rebounds | 3 - Griffith-Wallace (UE, 11/7) | 2 - Hall (UE, 11/7) |
| Defensive rebounds | 8 - Adebayo (UE, 11/7) | 6 - Buck (UE, 11/7) |
| Assists | 9 - Turley (UE, 11/7) | 2 - Newman (UE, 11/7) |
| Steals | 3 - Turley (UE, 11/7) | 2 - Miller, Wallace (UE, 11/7) |
| Turnovers | 2 - 5 Players (UE, 11/7) | 5 - Bishop (UE, 11/7) |
| Blocks | 1 - 4 Players (UE, 11/7) | 4 - Coffman (UE, 11/7) |
| Minutes | 31 - Mayes (UE, 11/7) | 36 - Newman (UE, 11/7) |

2018-19 GAME-BY-GAME INDIVIDUAL HIGHS

| Game | Points | Rebounds | Assists | Steals | Blocks |
|------------------------------|--------------|--------------|------------|------------|---------------|
| 11/7 - Evansville | 18 - Adebayo | 10 - Adebayo | 9 - Turley | 3 - Turley | 1 - 4 Players |
| 11/10 - Oakland City | | | | | |
| 11/13 - at Butler | | | | | |
| 11/20 - Lipscomb | | | | | |
| 11/27 - at Arkansas St. | | | | | |
| 12/1 - Alabama A&M | | | | | |
| 12/11 - at Illinois | | | | | |
| 12/13 - Bethel (TN) | | | | | |
| 12//18 - Southern Ill. | | | | | |
| 12/21 - at Kentucky | | | | | |
| 12/28 - at Tennessee | | | | | |
| 1/3 - Morehead St. | | | | | |
| 1/5 - Eastern Ky. | | | | | |
| 1/10 - at UT Martin | | | | | |
| 1/12 - at Southeast Mo. | | | | | |
| 1/17 - at Eastern Ill. | | | | | |
| 1/19 - at SIUE | | | | | |
| 1/24 - Belmont | | | | | |
| 1/26 - Tennessee St. | | | | | |
| 1/31 - at Jacksonville State | | | | | |
| 2/2 -at Tennessee Tech | | | | | |
| 2/7 - Eastern Ill. | | | | | |
| 2/9 - SIUE | | | | | |
| 2/14 - at Eastern Ky. | | | | | |
| 2/116 - at Austin Peay | | | | | |
| 2/21 - UT Martin | | | | | |
| 2/23 - Southeast Mo. | | | | | |
| 2/28 - at Morehead St. | | | | | |
| 3/2 - Austin Peay | | | | | |

2018-19 STARTERS BY GAME

| Game | 1 - G | 2 - G | 3 - G/F | 4 - F | 5 - C |
|------------------------------|--------|-------|------------------|-------|---------|
| 11/7 - Evansville | Turley | Mayes | Griffith-Wallace | Mack | Adebayo |
| 11/10 - Oakland City | | | | | |
| 11/13 - at Butler | | | | | |
| 11/20 - Lipscomb | | | | | |
| 11/27 - at Arkansas St. | | | | | |
| 12/1 - Alabama A&M | | | | | |
| 12/11 - at Illinois | | | | | |
| 12/13 - Bethel (TN) | | | | | |
| 12/18 - Southern Ill. | | | | | |
| 12/21 - at Kentucky | | | | | |
| 12/28 - at Tennessee | | | | | |
| 1/3 - Morehead St. | | | | | |
| 1/5 - Eastern Ky. | | | | | |
| 1/10 - at UT Martin | | | | | |
| 1/12 - at Southeast Mo. | | | | | |
| 1/17 - at Eastern Ill. | | | | | |
| 1/19 - at SIUE | | | | | |
| 1/24 - Belmont | | | | | |
| 1/26 - Tennessee St. | | | | | |
| 1/31 - at Jacksonville State | | | | | |
| 2/2 - at Tennessee Tech | | | | | |
| 2/7 - Eastern Ill. | | | | | |
| 2/9 - SIUE | | | | | |
| 2/14 - at Eastern Ky. | | | | | |
| 2/16 - at Austin Peay | | | | | |
| 2/21 - UT Martin | | | | | |
| 2/23 - Southeast Mo. | | | | | |
| 2/28 - at Morehead St. | | | | | |
| 3/2 - Austin Peay | | | | | |

2018-19 DOUBLE-DOUBLES

| Player | Game | Category 1 | Category 2 |
|----------------|------------|------------|-------------|
| Evelyn Adebayo | Evansville | 18 Points | 10 Rebounds |
| | | | |
| | | | |
| | | | |
| | | | |
| | | | |
| | | | |
| | | | |
| | | | |
| | | | |
| | | | |
| | | | |

2018-19 HONORS

| | | |
|--|--|--|
| | | |
| | | |

2018-19 COMBINED STATS

| RECORD: | OVERALL | HOME | AWAY | NEUTRAL |
|----------------|---------|------|------|---------|
| ALL GAMES | 1-0 | 1-0 | 0-0 | 0-0 |
| CONFERENCE | 0-0 | 0-0 | 0-0 | 0-0 |
| NON-CONFERENCE | 1-0 | 1-0 | 0-0 | 0-0 |

| # | Player | gp-gs | min | avg | Total | | 3-Point | | F-Throw | | Rebounds | | | | pf | dq | a | to | blk | stl | pts | avg |
|----------------|----------------------|-------|-----|------|--------|-------|---------|-------|---------|-------|----------|-----|-----|------|----|----|----|----|-----|-----|-----|------|
| | | | | | fg-fga | fg% | 3fg-fga | 3fg% | ft-fa | ft% | off | def | tot | avg | | | | | | | | |
| 14 | Adebayo, Evelyn | 1-1 | 28 | 28.0 | 9-20 | .450 | 0-2 | .000 | 0-1 | .000 | 2 | 8 | 10 | 10.0 | 0 | 0 | 1 | 2 | 0 | 0 | 18 | 18.0 |
| 05 | Turley, Macey | 1-1 | 29 | 29.0 | 6-7 | .857 | 4-5 | .800 | 0-0 | .000 | 2 | 4 | 6 | 6.0 | 2 | 0 | 9 | 1 | 0 | 3 | 16 | 16.0 |
| 00 | Griffith-Wallace, J. | 1-0 | 24 | 24.0 | 5-14 | .357 | 2-5 | .400 | 1-1 | 1.000 | 3 | 1 | 4 | 4.0 | 1 | 0 | 4 | 2 | 0 | 1 | 13 | 13.0 |
| 04 | Mayes, Lex | 1-1 | 31 | 31.0 | 3-6 | .500 | 3-6 | .500 | 0-0 | .000 | 0 | 2 | 2 | 2.0 | 3 | 0 | 3 | 0 | 0 | 0 | 9 | 9.0 |
| 31 | Crane, Brianna | 1-1 | 19 | 19.0 | 3-8 | .375 | 0-0 | .000 | 3-4 | .750 | 1 | 5 | 6 | 6.0 | 1 | 0 | 1 | 2 | 0 | 0 | 9 | 9.0 |
| 44 | Gibson, Macie | 1-0 | 12 | 12.0 | 2-2 | 1.000 | 0-0 | .000 | 1-2 | .500 | 2 | 3 | 5 | 5.0 | 0 | 0 | 1 | 0 | 1 | 0 | 5 | 5.0 |
| 03 | Outlaw, DeAsia | 1-1 | 23 | 23.0 | 2-4 | .500 | 1-1 | 1.000 | 0-0 | .000 | 0 | 2 | 2 | 2.0 | 2 | 0 | 3 | 2 | 1 | 0 | 5 | 5.0 |
| 32 | Burpo, Alexis | 1-0 | 10 | 10.0 | 1-2 | .500 | 0-1 | .000 | 0-0 | .000 | 0 | 0 | 0 | 0.0 | 0 | 0 | 0 | 0 | 0 | 0 | 2 | 2.0 |
| 02 | Hill, Sadie | 1-0 | 4 | 4.0 | 1-1 | 1.000 | 0-0 | .000 | 0-0 | .000 | 0 | 0 | 0 | 0.0 | 1 | 0 | 0 | 0 | 1 | 0 | 2 | 2.0 |
| 20 | Mack, Cekeya | 1-0 | 10 | 10.0 | 0-2 | .000 | 0-0 | .000 | 2-2 | 1.000 | 0 | 3 | 3 | 3.0 | 0 | 0 | 0 | 1 | 1 | 0 | 2 | 2.0 |
| 11 | Barrett, Paige | 1-0 | 4 | 4.0 | 0-0 | .000 | 0-0 | .000 | 0-0 | .000 | 0 | 1 | 1 | 1.0 | 1 | 0 | 0 | 0 | 0 | 0 | 0 | 0.0 |
| 33 | Manley, Michaela | 1-0 | 8 | 8.0 | 0-1 | .000 | 0-0 | .000 | 0-0 | .000 | 0 | 1 | 1 | 1.0 | 1 | 0 | 0 | 2 | 0 | 0 | 0 | 0.0 |
| Team | | | | | | | | | | | 2 | 3 | 5 | | | | | | | | | |
| Total..... | | 1 | 202 | | 32-67 | .478 | 10-20 | .500 | 7-10 | .700 | 12 | 33 | 45 | 45.0 | 12 | 0 | 22 | 12 | 4 | 4 | 81 | 81.0 |
| Opponents..... | | 1 | 199 | | 22-62 | .355 | 3-15 | .200 | 6-8 | .750 | 7 | 25 | 32 | 32.0 | 16 | - | 6 | 13 | 5 | 5 | 53 | 53.0 |

| TEAM STATISTICS | MUR | OPP | Date | Opponent | Score | Att. |
|------------------------|-------|-------|--------------|------------|---------|------|
| SCORING | 81 | 53 | 11/07/18 | EVANSVILLE | w 81-53 | 585 |
| Points per game | 81.0 | 53.0 | * - OVC game | | | |
| Scoring margin | +28.0 | - | | | | |
| FIELD GOALS-ATT | 32-67 | 22-62 | | | | |
| Field goal pct | .478 | .355 | | | | |
| 3 POINT FG-ATT | 10-20 | 3-15 | | | | |
| 3-point FG pct | .500 | .200 | | | | |
| 3-pt FG made per game | 10.0 | 3.0 | | | | |
| FREE THROWS-ATT | 7-10 | 6-8 | | | | |
| Free throw pct | .700 | .750 | | | | |
| F-Throws made per game | 7.0 | 6.0 | | | | |
| REBOUNDS | 45 | 32 | | | | |
| Rebounds per game | 45.0 | 32.0 | | | | |
| Rebounding margin | +13.0 | - | | | | |
| ASSISTS | 22 | 6 | | | | |
| Assists per game | 22.0 | 6.0 | | | | |
| TURNOVERS | 12 | 13 | | | | |
| Turnovers per game | 12.0 | 13.0 | | | | |
| Turnover margin | +1.0 | - | | | | |
| Assist/turnover ratio | 1.8 | 0.5 | | | | |
| STEALS | 4 | 5 | | | | |
| Steals per game | 4.0 | 5.0 | | | | |
| BLOCKS | 4 | 5 | | | | |
| Blocks per game | 4.0 | 5.0 | | | | |
| ATTENDANCE | 585 | 0 | | | | |
| Home games-Avg/Game | 1-585 | 0-0 | | | | |
| Neutral site-Avg/Game | - | 0-0 | | | | |

| Score by Periods | 1st | 2nd | 3rd | 4th | Totals |
|------------------|-----|-----|-----|-----|--------|
| Murray St. | 19 | 17 | 26 | 19 | 81 |
| Opponents | 8 | 14 | 20 | 11 | 53 |



**JANIKA
GRIFFITH-WALLACE**
G ■ 5-9 ■ So.
Brampton, Ontario



**REAGAN
BLACKBURN**
G ■ 5-8 ■ Fr.
Greenville, Ky.



**SADIE
HILL**
G/F ■ 6-0 ■ Fr.
Indianapolis, Ind



**DEASIA
OUTLAW**
G ■ 5-11 ■ Jr.
Henderson, Ky.



**LEX
MAYES**
G ■ 5-7 ■ Fr.
Murray, Ky.



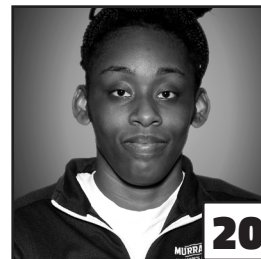
**MACEY
TURLEY**
G ■ 5-6 ■ Fr.
Murray, Ky.



**PAIGE
BARRETT**
G/F ■ 5-10 ■ So.
Scottsburg, Ind.



**EVELYN
ADEBAYO**
F ■ 6-0 ■ R-Jr.
London, England



**CEKEYA
MACK**
F ■ 6-1 ■ Jr.
Murray, Ky.



**BRIANNA
CRANE**
F ■ 6-0 ■ So.
Birmingham, Ala.



**ALEXIS
BURPO**
F/G ■ 5-10 ■ Fr.
Murray, Ky.



**MICHAELA
MANLEY**
G ■ 5-10 ■ Sr.
Benton, Ky.



**MACIE
GIBSON**
F ■ 6-1 ■ Fr.
Booneville, Ky.



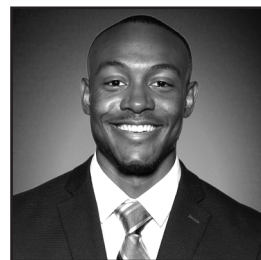
**RECHELLE
TURNER**
Head Coach
2nd Season



**MONICA
EVANS**
Assistant Coach
2nd Season



**AMBER
GUFFEY**
Assistant Coach
2nd Season



**JAUWAN
SCAIFE**
Assistant Coach
1st Season