



5-8 (1-1)

MURRAY ST. RACERS VS. UT MARTIN/SOUTHEAST MO.

Martin, Tenn./Cape Girardeau, Mo.; Elam Center/Show-Me Center

Thursday & Saturday, Jan 10 & 12, 2019; 5:30 & 2 p.m.

TV/Web: ESPN+

Live Audio: WFGS 103.5 FM (Thur.)/WNBS 1340 AM (Sat.)

(PxP - Jeremy Rose)



9-4 (1-1)



6-7 (1-1)

2018-19 SCHEDULE

Date	Opponent	Time /Result
11/1	#LINDSEY WILSON	W 72-51
11/7	EVANSVILLE	W 81-53
11/10	OAKLAND CITY	W 113-55
11/13	at Butler	L 65-86
11/20	LIPSCOMB	W 97-61
11/27	at Arkansas St.	L 63-74
12/1	ALABAMA A&M	L 53-59
12/11	at Illinois	L 52-84
12/13	BETHEL (TN)	W 86-50
12/18	SOUTHERN ILL.	L 59-65
12/21	at #18 Kentucky	L 49-88
12/28	at #10 Tennessee	L 77-98
1/3	*MOREHEAD ST.	L 61-83
1/5	*EASTERN KY.	W 81-69
1/10	*at UT Martin	5:30 p.m.
1/12	*at Southeast Mo.	2 p.m.
1/17	*at Eastern Ill.	5:15 p.m.
1/19	*at SIUE	5:15 p.m.
1/24	*BELMONT	2 p.m.
1/26	*TENNESSEE ST.	5 p.m.
1/31	*at Jacksonville St.	5 p.m.
2/2	*at Tennessee Tech	11:30 p.m.
2/7	*EASTERN ILLINOIS	5:30 p.m.
2/9	*SIUE	5 p.m.
2/14	*at Eastern Ky.	4 p.m.
2/16	*at Austin Peay	2 p.m.
2/21	*UT MARIN	5 p.m.
2/23	*SOUTHEAST MO.	5 p.m.
2/28	*at Morehead St.	4:05 p.m.
3/1	*AUSTIN PEAY	5 p.m.
3/6-9	OVC Tournament	TBD

* - OVC Contest

- Exhibition

2018-19 OVC STANDINGS

Team	OVC	Overall
Tennessee Tech	2-0	10-3
Austin Peay	2-0	7-6
Belmont	1-1	8-5
Eastern Illinois	1-1	7-6
Jacksonville State	1-1	7-6
Morehead State	1-1	10-5
Murray State	1-1	5-8
SIUE	1-1	6-7
Southeast Missouri	1-1	6-7
UT Martin	1-1	9-4
Eastern Kentucky	0-2	2-11
Tennessee State	0-2	0-14

As of Jan 1, 2019

MURRAY STATE PROBABLE STARTERS

No.	Name	Pos.	GP/GS	FG%	3FG%	FT%	RPG	APG	PPG
00	Janika Griffith-Wallace	G	12/8	.324	.255	.714	3.3	2.6	9.2
4	Lex Mayes	G	13/13	.313	.324	.793	2.4	1.2	8.3
5	Macey Turley	G	13/13	.388	.264	.852	3.4	5.1	11.2
14	Evelyn Adebayo	F	13/13	.485	.393	.818	9.9	1.2	18.5
31	Brianna Crane	F	13/7	.521	.000	.750	5.4	0.8	7.5

Key Reserves

3	DeAsia Outlaw	G	9/4	.414	.333	.667	1.1	0.6	3.2
20	Cekeya Mack	F	13/3	.560	.000	.609	3.8	0.2	5.4
32	Alexis Burpo	F/G	13/4	.500	.412	.385	4.0	1.7	5.4
Team			13	.422	3.15	.762	39.3	14.1	72.1

UT MARTIN PROBABLE STARTERS

No.	Name	Pos.	GP/GS	FG%	3FG%	FT%	RPG	APG	PPG
4	Emanye Robertson	G	13/13	.553	.250	.955	3.8	3.6	9.0
14	Zaire Hicks	G	13/12	.381	.360	.813	1.8	2.4	8.5
20	Chelsey Perry	F	13/12	.443	.250	.750	4.6	1.5	11.7
21	Maddie Waldrop	F	13/12	.420	.435	.775	6.6	1.5	7.6
22	Damiah Griffin	F	13/10	.487	.154	.810	4.0	0.8	11.2
Team			13	.431	.322	.768	38.5	16.6	83.9

SOUTHEAST MISSOURI PROBABLE STARTERS

No.	Name	Pos.	GP/GS	FG%	3FG%	FT%	RPG	APG	PPG
2	Carrie Shephard	G	13/11	.368	.382	.500	1.5	1.2	9.6
3	Adrianna Murphy	G	13/13	.428	.381	.714	4.5	4.2	11.9
4	Dolapo Balogun	F	13/7	.393	.000	.750	2.2	0.4	2.2
23	Jocelyn Taylor	F	13/11	.453	.000	.556	4.4	0.8	6.4
24	Tesia Thompson	G	12/11	.401	.185	.677	6.7	1.8	17.2
Team			13	.399	.319	.643	36.8	12.2	65.2

2018-19 RECORD BREAKDOWN

	Record	Home	Away	Neutral	OT
Overall	5-8	5-3	0-5	0-0	0-0
OVC	0-0	0-0	0-0	0-0	0-0

SEASON STREAKS

Overall: Won 1 Home: Won 1 Away: Lost 5 Neutral: --- OT: ---

UPCOMING SCHEDULE

DATE	OPPONENT	SITE	TIME	WEB	RADIO
Jan. 17	Eastern Ill.	Charleston, Ill. (Lantz Arena)	12 p.m.	ESPN+	1340 AM
Jan. 19	SIUE	Edwardsville, Ill. (Vadalabene Center)	2 p.m.	ESPN+	1340 AM
Jan. 24	Belmont	Murray, Ky. (CFSB Center)	5 p.m.	ESPN+	1340 AM
Jan. 26	Tennessee St.	Murray, Ky. (CFSB Center)	5 p.m.	ESPN+	1340 AM
Jan. 31	Jacksonville St.	Jacksonville, Ala. (Pete Mathews Coliseum)	11:30 a.m.	ESPN+	1340 AM

LAST TIME OUT

vs. Morehead St. (L 61-83)/Eastern Ky. (W 81-63)

Jan. 3 & 5 at CFSB Center

MURRAY, Ky. - The Racers went 1-1 in the opening weekend of OVC play with a loss Thursday to Morehead State and a win over Eastern Kentucky Saturday. Against Morehead State, the Racers could not overcome a sluggish fourth quarter and fell to Morehead State, 83-61. Macey Turley led Murray State with 14 points, while Brianna Crane followed with 10. Evelyn Adebayo nearly had her sixth double-double of the season as she finished with nine points and a game-high 10 rebounds, her sixth double-digit rebound performance of the season. For Crane, it marked her fourth consecutive game that she finished with double-digit points. Against the Colonels, the Racers got 20 points from their bench, including 12 from Alexis Burpo, to get their first OVC win, 81-63. Evelyn Adebayo picked up her sixth double-double of the season with 25 points and 11 rebounds, while Lex Mayes followed with 16 points. In addition to Burpo's 12 points, she also added seven points. Janika Griffith-Wallace rounded out the MSU players in double-digits with 11 points, to go along with five assists.

THURSDAY'S OPPONENT:

at UT Martin Skyhawks


Jan. 10, 2019

5:30 p.m.

Elam Center

SERIES HISTORY: Thursday will be the 80th meeting all-time between the Racers and the Skyhawks with UTM leading the series 45-34. UT has virtually owned the series as of late, winning each of the last four game, 11 of the last 12 and 17 of the last 19. Murray State is 14-25 all-time in Martin and has not won in the Elam Center since 2013, dropping each of the last five meeting there since.

SCOUTING REPORT: With one of the most high-powered offenses in Division I, UT Martin enters the weekend averaging 83.9 points per game, the ninth most in the nation, while giving up 77.1. The Skyhawks are currently 9-4 on the year and 1-1 in league play with a loss at Eastern Illinois and a win over SEMO last week. Chelsey Perry leads a unique Skyhawk offense that sees 12 players average double-digit minutes with no single-player averaging above 28 with 11.7 points per game. In addition, Maddie Waldrop pulls down a team-high 6.6 rebounds per game, to go along with 7.6 points.

MURRAY STATE VS. UT MARTIN				SKYHAWKS - 45 WINS, RACERS - 34 WINS			
		<u>UT Martin Quick Facts</u>		Conference: Ohio Valley Arena: Elam Center (4,300) 2017-18 Rec.: 19-15 (13-5, 2nd OVC) Postseason: L WNIT 1st Rd		Head Coach: Kevin McMillan Alma Mater: Rhodes, 1989 Overall Record (season): 182-121 (10th) UTM Record (season): Same	
		Founded: 1900 Location: Martin, Tenn. Colors: BNavy Blue & Orange Enrollment: 7,069					
<u>Last 3 vs. UTM:</u>		<u>Current Streaks vs. UTM:</u>		<u>All-Time vs. UTM:</u>		<u>MSU-UTM Series Misc.:</u>	
2/3/18 @UTM L 67-85		Overall: Lost 4		Home: 18-19		First Meeting: 12/6/72 @UTM L 41-63	
1/6/18 @MUR L 80-97		Home: Lost 8		Away: 14-25		Largest MSU Win: 3/3/08 @MSU W 83-48	
2/25/17 @UTM L 82-83		Away: Lost 4		Neutral: 2-1		Largest UTM Win: 2/7/98 @MSU L 49-82	

SATURDAY'S OPPONENT:

at Southeast Missouri Redhawks


Jan. 12, 2019

2 p.m.

Show-Me Center

SERIES HISTORY: Southeast Missouri leads the all-time series with the Racers, 39-27, and holds a 24-10 advantage in games played in Cape Girardeau. Recently, SEMO has won each of the last four meeting and seven of the last 10. In Cape, the Racers have dropped each of their last six game and have not won at the Show-Me center since 2011.

SCOUTING REPORT: The Redhawks are 6-7 and 1-1 on the year after winning at SIUE last weekend, but falling to Martin at home. Tesia Thompson leads the team with 17.2 points and 6.7 rebounds, per game, while Adrianna Murphy follows at 11.9 points and 3.4 assists. As a team, SEMO shoots 39.9-percent from the floor, 31.9-percent from 3-point range and 64.3-percent at the free-thrown line and averages 65.2 points, while allowing 66.6.

MURRAY STATE VS. SOUTHEAST MISSOURI			REDHAWKS - 39 WINS, RACERS - 27 WINS		
	<u>Southeast Missouri Quick Facts</u>		<u>Conference:</u> Ohio Valley		<u>Head Coach:</u> Rekha Patterson
	Founded: 1873		Arena: Show-Me Center (7,000)		Alma Mater: N.C. A&T, 2001
	Location: Cape Girardeau, Mo.		2017-18 Rec.: 14-17 (9-9, T-6th OVC)		Overall Record (season): 48-56 (4th)
	Colors: Red & Black		Postseason: L OVC 1st Rd.		SEMO Record (season): Same
	Enrollment: 11,502				
<u>Last 3 vs. SEMO:</u>		<u>Current Streaks vs. SEMO:</u>		<u>MSU-SEMO Series Misc.:</u>	
2/1/18 @MSU L 70-80		Overall: Lost 4		First Meeting: 2/16/74 @SEMO L 42-26	
1/4/18 @MSU L 74-85		Home: Lost 2		Largest MSU Win: 12/4/76 @MSU W 105-47	
2/22/17 @SEMO L 67-80		Away: Lost 6		Largest SEMO Win: 2/3/16 @SEMO L 59-96	

2018-19 MURRAY STATE ROSTER

No.	Player	Pos.	Ht.	Yr.	Hometown (Previous School)
0	Janika Griffith-Wallace	G	5-9	So.	Brampton, Ontario (Tech Academy at Sault Ste Marie)
1	Raegan Blackburn	G	5-8	Fr.	Greenville, Ky. (Muhlenberg County HS)
2	Sadie Hill	F/G	6-0	Fr.	Indianapolis, Ind. (Perry Meridian HS)
3	DeAsia Outlaw	G	5-11	Jr.	Henderson, Ky. (Wabash Valley CC)
4	Lex Mayes	G	5-7	Fr.	Murray, Ky. (Murray HS)
5	Macey Turley	G	5-6	Fr.	Murray, Ky. (Murray HS)
11	Paige Barrett	G/F	5-10	So.	Scottsburg, Ind. (Scottsburg HS)
14	Evelyn Adebayo	F	6-0	Jr.	London, England (Gardner-Webb)
20	Cekeya Mack	F	6-0	Jr.	Albany, Ga. (Albany Tech)
31	Brianna Crane	F	6-0	So.	Birmingham, Ala. (Ramsay HS)
32	Alexis Burpo	F/G	5-10	Fr.	Murray, Ky. (Murray HS)
33	Michaela Manley	G	5-10	Sr.	Benton, Ky. (Marshall County HS)
44	Macie Gibson	F	6-1	Fr.	Booneville, Ky. (Owsley County HS)

Head Coach: Rechelle Turner (Murray St., 1996), 2nd Season

Assistant Coaches: Amber Guffey (Murray St., 2009), 2nd Season;
 Jauwan Scaife (Ball St., 2012), 1st Season; Monica Evans, 2nd Season

PRONUNCIATION GUIDE

JANIKA Griffith-Wallace.....Juh-nee-kuh
 Evelyn ADEBAYO.....Add-uh-buy-oh
 CEKEYA Mack.....Suh-key-uh
 DEASIA Outlaw.....Dee-Asia
 RECHELLE TurnerRuh-shell
 JAUWAN SCAIFE.....Juh-wahn Scayf

HOW THEY RANK - TEAM

Statistic	Team	National Rank	Conference Rank	Value	National Leader	Value
Assist Turnover Ratio (349 ranked)	UT Martin	103	3	0.94	Oregon	1.97
	Murray St.	179	7	0.81		
	Southeast Mo. St.	292	11	0.62		
Assists (349 ranked)	UT Martin	75	2	216	Drake	312
	Murray St.	177	5	183		
	Southeast Mo. St.	255	9	159		
Assists Per Game (349 ranked)	UT Martin	43	2	16.6	Baylor	23.3
	Murray St.	131	5	14.1		
	Southeast Mo. St.	233	9	12.2		
Blocked Shots (348 ranked)	Southeast Mo. St.	89	4	55	Mississippi St.	107
	UT Martin	126	5	49		
	Murray St.	212	7	38		
Blocked Shots Per Game (349 ranked)	Southeast Mo. St.	67	4	4.2	South Carolina	7.6
	UT Martin	102	5	3.8		
	Murray St.	201	7	2.9		
Defensive Rebounds per Game (30 ranked)					Baylor	35
Fewest Fouls (345 ranked)	Murray St.	30	1	197	Penn	145
	Southeast Mo. St.	300	9	282		
	UT Martin	337	11	312		
Fewest Turnovers (348 ranked)	Murray St.	174	7	226	Wyoming	119
	UT Martin	192	9	229		
	Southeast Mo. St.	278	11	257		
Field-Goal Percentage (349 ranked)	UT Martin	79	2	43.1	Oregon	52.6
	Murray St.	101	4	42.2		
	Southeast Mo. St.	182	8	39.9		
Field-Goal Percentage Defense (349 ranked)	Southeast Mo. St.	251	6	41.2	Baylor	29.6
	Murray St.	280	8	42.1		
	UT Martin	339	10	45.1		
Free Throw Attempts (349 ranked)	UT Martin	84	4	271	Arkansas St.	376
	Southeast Mo. St.	156	5	244		
	Murray St.	180	7	239		
Free Throws Made (348 ranked)	UT Martin	35	3	208	Indiana	258
	Murray St.	95	5	182		
	Southeast Mo. St.	204	7	157		
Free-Throw Percentage (349 ranked)	UT Martin	18	1	76.8	Virginia Tech	80.5
	Murray St.	24	2	76.2		
	Southeast Mo. St.	273	10	64.3		
Offensive Rebounds per Game (30 ranked)					Troy	23
Personal Fouls Per Game (349 ranked)	Murray St.	52	1	15.2	UConn	11.7
	Southeast Mo. St.	332	10	21.7		
	UT Martin	347	12	24.0		
Rebound Margin (349 ranked)	Murray St.	150	5	1.8	Baylor	19.8
	Southeast Mo. St.	199	8	0.3		
	UT Martin	228	10	-1.4		
Rebounds (349 ranked)	Murray St.	206	6	511	Wisconsin	743
	UT Martin	227	9	501		
	Southeast Mo. St.	261	11	479		
Rebounds Per Game (349 ranked)	Murray St.	131	4	39.31	Troy	51.23
	UT Martin	163	8	38.54		
	Southeast Mo. St.	234	11	36.85		
Scoring Defense (349 ranked)	Southeast Mo. St.	227	6	66.6	Drexel	47.1
	Murray St.	295	9	70.7		
	UT Martin	336	11	77.1		
Scoring Margin (349 ranked)	UT Martin	108	5	6.8	Mississippi St.	37.7
	Murray St.	178	7	1.4		
	Southeast Mo. St.	218	9	-1.5		
Scoring Offense (349 ranked)	UT Martin	9	2	83.9	Oregon	92.4
	Murray St.	84	4	72.1		
	Southeast Mo. St.	181	8	65.2		
Steals (349 ranked)	UT Martin	13	2	170	Lamar University	208
	Southeast Mo. St.	37	4	150		
	Murray St.	150	5	114		

HOW THEY RANK - TEAM

	Murray St.	213	8	75		
	Southeast Mo. St.	262	10	66		
Three-Point Field Goals Per Game (348 ranked)	UT Martin	82	3	7.3	DePaul	12.3
	Murray St.	187	8	5.8		
	Southeast Mo. St.	245	10	5.1		
Three-Point Field-Goal Percentage (349 ranked)	UT Martin	132	5	32.2	Wyoming	43.7
	Southeast Mo. St.	145	6	31.9		
	Murray St.	157	7	31.5		
Turnover Margin (349 ranked)	UT Martin	25	2	5.15	Lamar University	10.85
	Southeast Mo. St.	136	8	1.31		
	Murray St.	226	10	-0.92		
Turnovers Forced (349 ranked)	UT Martin	11	1	22.77	Northwestern St.	27.31
	Southeast Mo. St.	30	4	21.08		
	Murray St.	192	9	16.46		
Turnovers Per Game (349 ranked)	Murray St.	234	7	17.4	Oregon	10.8
	UT Martin	247	9	17.6		
	Southeast Mo. St.	314	12	19.8		
Won-Lost Percentage (347 ranked)	UT Martin	80	2	69.2	NC State	100.0
	Southeast Mo. St.	207	8	46.2	Louisville	100.0
	Murray St.	246	10	38.5	Ohio	100.0

HOW THEY RANK - INDIVIDUAL

Statistic	Player	National Rank	Conference Rank	Value	National Leader	Value
Assist Turnover Ratio (250 ranked)	Macey Turley, Murray St.	129	5	1.69	Melinda Trimmer, Youngstown St.	4.93
	Emanye Robertson, UT Martin	177	6	1.47		
Assists (138 ranked)	Macey Turley, Murray St.	71	1	66	Sabrina Ionescu, Oregon	126
Assists Per Game (249 ranked)	Macey Turley, Murray St.	54	1	5.1	Sabrina Ionescu, Oregon	9.0
	Adrianna Murphy, Southeast Mo. St.	134	4	4.2		
	Emanye Robertson, UT Martin	216	9	3.6		
Blocked Shots (144 ranked)	Chelsey Perry, UT Martin	52	3	25	Channon Fluker, CSUN	57
Blocked Shots Per Game (222 ranked)	Chelsey Perry, UT Martin	44	3	1.92	Channon Fluker, CSUN	3.80
	Jocelyn Taylor, Southeast Mo. St.	198	5	1.08		
	Cekeya Mack, Murray St.	222	6	1.00		
	Latrese Saine, Southeast Mo. St.	222	6	1.00		
Defensive Rebounds per Game (29 ranked)	Evelyn Adebayo, Murray St.	14	1	8	Regan Magarity, Virginia Tech	11
Double Doubles (34 ranked)	Evelyn Adebayo, Murray St.	34	1	6	Megan Gustafson, Iowa	13
					Kristine Anigwe, California	13
Field Goal Attempts (150 ranked)					Kierra Anthony, Louisiana Tech	278
Field Goals Made (144 ranked)	Evelyn Adebayo, Murray St.	126	3	83	Megan Gustafson, Iowa	152
Field-Goal Percentage (250 ranked)	Evelyn Adebayo, Murray St.	113	3	48.5	Ruthy Hebard, Oregon	70.9
Final Points (199 ranked)	Evelyn Adebayo, Murray St.	95	3	240	Megan Gustafson, Iowa	370
Free Throw Attempts (147 ranked)	Tesia Thompson, Southeast Mo. St.	18	1	93	Lexi Klabo, North Dakota	128
	Evelyn Adebayo, Murray St.	58	2	77		
Free Throws Made (146 ranked)	Evelyn Adebayo, Murray St.	36	1	63	Lexi Klabo, North Dakota	112
	Tesia Thompson, Southeast Mo. St.	36	1	63		
Free-Throw Percentage (250 ranked)	Evelyn Adebayo, Murray St.	92	3	81.8	Rebekah Hand, Marist	95.2
	Damiah Griffin, UT Martin	107	5	81.0		
Minutes Played (150 ranked)					Kyara Frames, Albany (NY)	585:09
Minutes Played Per Game (150 ranked)	Adrianna Murphy, Southeast Mo. St.	105	1	34.62	Kyara Frames, Albany (NY)	39.01
Offensive Rebounds per Game (30 ranked)					Teaira McCowan, Mississippi St.	5
Points Per Game (250 ranked)	Evelyn Adebayo, Murray St.	56	3	18.5	Megan Gustafson, Iowa	26.4
	Tesia Thompson, Southeast Mo. St.	97	4	17.2		
Rebounds (149 ranked)	Evelyn Adebayo, Murray St.	58	1	129	Regan Magarity, Virginia Tech	200
Rebounds Per Game (247 ranked)	Evelyn Adebayo, Murray St.	38	1	9.9	Kristine Anigwe, California	13.9
Steals (136 ranked)	Adrianna Murphy, Southeast Mo. St.	20	1	43	Chastadie Barrs, Lamar University	73
	Emanye Robertson, UT Martin	65	3	33		
	Tesia Thompson, Southeast Mo. St.	118	7	29		
Steals Per Game (249 ranked)	Adrianna Murphy, Southeast Mo. St.	17	1	3.31	Chastadie Barrs, Lamar University	5.62
	Emanye Robertson, UT Martin	51	3	2.54		
	Tesia Thompson, Southeast Mo. St.	66	4	2.42		
Three-Point Field Goals Attempted (144 ranked)	Carrie Shephard, Southeast Mo. St.	122	3	89	Alison Smolinski, Youngstown St.	142
Three-Point Field Goals Made (135 ranked)	Carrie Shephard, Southeast Mo. St.	93	4	34	Lauren Loven, Denver	72
Three-Point Field Goals Per Game (248 ranked)	Carrie Shephard, Southeast Mo. St.	72	4	2.62	Taylor Robertson, Oklahoma	4.31
Three-Point Field-Goal Percentage (230 ranked)	Carrie Shephard, Southeast Mo. St.	107	2	38.2	Quinn Weidemann, Wyoming	53.3
Triple Doubles (4 ranked)					Sabrina Ionescu, Oregon	5

THE INSIDE TRACK

GAME 13-14 NOTES - UTM & SEMO

A WIN IN EITHER GAME WOULD...

Give the Racers their first win at UT Martin in six years and the first at SEMO in eight years.

REUNION

Thursday will be a reunion of sorts for head coach Rechele Turner and players Lex Mayes, Macey Turley and Alexis Burpo. It will mark the first time that they have been on the court with former player/teammate Alexis Burpo since the latter graduated from Murray High two years ago.

ADDING UP

With 25 points and 11 rebounds Evelyn Adebayo tallied her sixth double-double of the season. She currently leads the Racers with 18.5 points and 9.9 rebounds per game.

WORKING THE LINE

Thursday will be a battle of the two best free-throw shooting teams in the OVC. UT Martin currently leads the league at 76.8 percent, while the Racers follow at 76.2.

OK, WHAT'S NEXT?

The Racers continue a four-game road swing with games at Eastern Illinois (Jan. 17) and SIUE (Jan. 19).

GAME 12-13 NOTES - MOR & EKU

A WIN THURSDAY WOULD...

Put an end to a three-game skid by the Racers. Murray State has lost its last three game with its last win coming against Bethel on Dec. 13.

THE SECOND SEASON

The Racers are 21-20 all-time in OVC openers and are 15-7 in those game when they are played in Murray. MSU has won its last three OVC openers and 5-4 all-time in conference lid lifters against Morehead State.

KEEP 'EM COMIN'

On Monday, Evelyn Adebayo won her second OVC Player of the Week award and fourth Newcomer of the Week honor. The junior had a career-high 28 at No. 10 Tennessee and went 7-for-7 at the free throw line.

IT'S A SMALL, SMALL WORLD

Both Murray State's Janika Griffith-Wallace and Morehead State's Georgia Campbell hail from the Toronto suburb of Brampton in Canada, while the Racers' DeAsia Outlaw and the Eagles' Ashley Moore played junior college ball together at Wabash Valley.

GAME 11 NOTES - UT

A WIN FRIDAY WOULD...

Give MSU its first win over an SEC team since 1980, when the Racers defeated Vanderbilt. Currently, MSU is 6-35 against the Southeastern Conference.

MORE HARDWARE

For the third time this season, Evelyn Adebayo was named as the OVC Newcomer of the Week. Over two games, she averaged 18.5 points and 8.5 rebounds.

ROLE REVERSAL

The Lady Vols are currently ranked 48th out of 349 teams in Division I when it comes to getting to the free throw line. However, when they get there they have trouble, shooting just 67.1 percent and ranking 209th. Conversely, MSU is the 28th best free throw shooting team in the country at 75.7 percent, but they have trouble getting to the line, ranking 231st in attempts at just 17.3 per game

GAME 10 NOTES - UK

GETTING IT DONE

Despite using just two bench players Tuesday against SIU, the Racer reserves still outscored their SIU counterparts 18-9, despite the Salukis using three more players. Brianna Crane dumped in 13 points, while Alexis Burpo added six.

THE KEY

One thing has separated the Racer wins from losses this season on the stat sheet and that is field-goal percentage. MSU is 4-0 when outshooting their opponents and 0-5 when being outshot.

GAME 9 NOTES - SIU

A WIN TUESDAY WOULD...

Give the Racers a much-needed boost of momentum as they head into arguably their two toughest games of the season; at No. 18 Kentucky On Dec. 22 and at No. 9 Tennessee on Dec. 28.

A CLEAN SWEEP

Evelyn Adebayo and Macey Turley swept the weekly OVC awards for the Racers Tuesday with Adebayo being named both Player and Newcomer and Turley earning the Freshman nod. Adebayo notched a double-double in both games last week to average 22.0 point and 13.0 rebounds, while Turley averaged 14.0 points and 5.0 assists.

LEADING THE WAY

Evelyn Adebayo has had the most points and rebounds, either by herself or shared, in every game for the Racers this season. Already with five double-doubles in eight games, the transfer is averaging 17.6 point and 10.8 rebounds per game.

WELCOME BACK

For the first time since her departure following the 2007-08 season, Jody Adams returns to the CFSB Center, this time as an assistant coach for SIU. Adams coached one season at the Bank, guiding the Racers to a 24-8 mark, an OVC tournament title and the program's first trip to the NCAA Tournament. Current Racer assistant Amber Guffey was a member Adams' championship squad.

GAME 8 NOTES - BET

A WIN THURSDAY WOULD...

Snap a three-game skid by the Racers which includes losses at Arkansas State and Illinois and at home against Alabama A&M.

FOUR & COUNTING

Evelyn Adebayo notched her fourth double-double of the season at Illinois with a career-high 23 points and 13 rebounds, which tied her previous career best.

BEST BEHAVIOR

The Racers continue to be one of the most disciplined teams in the nation as they have committed the sixth fewest fouls in the country. The Racers currently have 101 fouls on the season, while leader Montana has 94. at the CFSB Center in 2018.

GAME 7 NOTES - ILL

A WIN TUESDAY WOULD...

Give the Racers their first win over a Big Ten program. MSU is currently 0-4 against the power five league going with two losses against Indiana and one each against Purdue and Illinois.

DOIN' WORK

Through the first six games this season, Evelyn Adebayo has had three double-doubles. She is currently averaging 16.2 points and 10.0 rebounds per game placing her fourth and second in each category, respectively.

THE INSIDE TRACK

GAME 6 NOTES - AAMU

A WIN SATURDAY WOULD...

Give the Racers just their third 4-0 start at home since 2008-09. The only other previous time the Racer won their first four at The Bank was two seasons ago in 2016-17.

MOVIN' ON UP

With their 18-for-20 performance at the charity stripe Tuesday at Arkansas State, the Racers skyrocketed from 10th to 4th nationally in free throw percentage. MSU is currently shooting 82.2 percent from the free throw line, while DePaul leads the nation at 85.0.

DANGEROUS FROM DOWNTOWN

As a team, Murray State currently has the seventh best three-point shooting percentage in the nation at 41.8 and the nation's 12th-best three-point shooter in Lex Mayes, who is making 55.2-percent of her three-point attempts. St. Francis Brooklyn currently paces the nation in team percentage at 44.4, while Shalexxus Aaron leads individually at 72.7 percent.

BEASTS UNDERNEATH

The Racers currently lead the OVC in both rebounds per game and rebound margin. MSU currently averages 43.0 boards per game, while outrebounding their opponents by an average of 9.6 rebounds per game. Those numbers currently place the Racers 47th nationally in rebounds per game and 27th in rebound margin.

GAME 5 NOTES - ASU

A WIN TUESDAY WOULD...

Give the Racers their first win over a program that sponsors FBS football since 2012 when they defeated Ball State at home, 63-53.

RANK AND FILE

Murray State currently ranks in the top 10 nationally in three separate categories. They are 10th in free throw percentage at 80.0, eighth in scoring offense at 89.0 and fifth in fewest fouls at 54.

EIGHT IS GREAT

In three of their four games this season, the Racers have limited their opponents to just eight points in the opening stanza. They did so against Evansville, Oakland City and Lipscomb and went 3-0 in those contests.

THREE FOR ALL

Macey Turley kept Murray State's streak of winning a weekly award alive Tuesday when she was named as the OVC Freshman of the Week for the second time this season.

A FRIENDLY FACE

Arkansas State assistant Todd Buchanan is no stranger to the Racers, as he is a 1995 graduate of Murray State. In addition to his time as a student at Murray State, Buchanan served as an assistant for the Racer women from 1992-1995 and also coached at three local high schools; Lyon County, Calloway County and Murray.

GAME 4 NOTES - LIP

A WIN TUESDAY WOULD...

Give the Racers their first three-game win-streak at home since 2016-17 when they posted wins over MacMurray, Tennessee State and Eastern Illinois (Dec. 12 -Jan. 11).

BACK-TO-BACK

Although she did come up just short of her third straight double-double against Butler, Evelyn Adebayo was named as the OVC Newcomer of the Week, giving the Racers a weekly winner in each of the first two weeks of the season. Macey Turley was the first winner for Murray State, taking home freshman honors last week.

TURNOVER TROUBLE

The Racers committed a season-high 23 turnovers against Butler, leading directly to 27 points for the Bulldogs. The game also marked the first-time this year that MSU had finished a game with more turnovers than assists (11).

GAME 3 NOTES - BUT

DOUBLE YOUR FUN

For the second time in as many games, Evelyn Adebayo notched a double-double. Through two games this season she is averaging 18.0 points per game and 11.5 rebounds.

BIG NUMBERS

The Racers scored 113 points against Oakland City Saturday for the fourth most points in school single-game history. In addition, the Racers' 40-made field goals is the 11th most in program history.

SPREADING THE LOVE

All 12 eligible players played for the Racers with 11 of them tallying points. Of the 11 players that scored in the game, seven reached double digits.

GAME 2 NOTES - OAK

OPENING STATEMENT

MSU's win Wednesday was the first in a season opener against a Division I team since beating the Purple Aces to start the 2011-12 season, as well as the largest margin of victory against any Division I opponents since a 32 point win over Alabama A&M in 2016-17.

HISTORIC DEBUT

With game-highs of 18 points and 10 rebounds, Evelyn Adebayo became the first known Racer to debut with a double-double (single-game records dating back to 1997-98) Wednesday versus Evansville.

QUICK TURNAROUND

In Wednesday's opener, the Racers addressed two areas of concerns from the exhibition Thursday night, three-point and free throw shooting. The Racers were just 1-for-13 (7.7%) from three and 19-for-35 (54.3%) in their lone exhibition. However, on Wednesday, MSU was 7-for-10 (70.0%) from the stripe and 10-for-20 (50.0%) from beyond the arc.

GAME 1 NOTES - UE

LIFTING THE LID

Murray State opens its 52nd season of women's basketball Wednesday and is 22-30 all-time in season openers and 26-23 in home openers. The Racers are 4-4 all-time against UE in season openers and 3-3 against the Purple Aces in home openers.

SHAKING THE DUST OFF

The Racers won their only exhibition of the year last Thursday, 72-51 over Lindsey Wilson. After sitting out last season due to NCAA transfer rules, Evelyn Adebayo easily got back in the groove and led MSU with 21 points, while Janika Griffith-Wallace posted a double-double with 13 points and 11 rebounds.

NEXT ONE UP

The Racers return just 20.4 percent of their scoring from last year with the most notable loss being the 2017-18 OVC Player of the Year, Ke'Shunnan James. Brianna Crane will lead all returners this season after averaging 7.2 points and 5.7 rebounds per game last season.

HEAD COACH RECEHELLE TURNER

2ND SEASON AT MSU/2ND SEASON OVERALL

TURNER'S CAREER YEAR-BY-YEAR COACHING RECORD

Year	Team	OVERALL			OVC			POSTSEASON		
		W	L	Pct.	W	L	Pct.	W	L	Pct.
2017-18	Murray St.	11	19	.367	7	11	.389	0	1	.000
2018-19	Murray St.	5	8	.385	1	1	.500	-	-	.000
TOTAL		15	27	.357	8	12	.400	0	1	.000
OT		0	1	.000	0	1	.000	0	1	.000

TURNER VS. THE COMPETITION

OPPONENT	RECORD	OPPONENT	RECORD
Austin Peay*	1-1	Lipscomb	1-1
Alabama	1-0	Louisville	0-1
Alabama A&M	0-2	Mississippi Valley St.	1-0
Arkansas St.	0-1	Morehead St.*	0-2
Belmont*	0-2	UNC Greensboro	1-0
Bethel (TN)	2-0	Oakland City	1-0
Butler	0-2	Northern Kentucky	1-0
Evansville	1-1	Southern Illinois	0-1
ETSU	0-1	SIUE*	0-2
Eastern Illinois*	2-0	Southeast Missouri*	0-2
Eastern Kentucky*	2-0	Tennessee	0-1
Illinois	0-1	Tennessee State*	1-0
Jacksonville State*	0-2	Tennessee Tech*	2-0
Kentucky	0-1	UT Martin*	0-2

2018 Opponents Listed In BOLD

*Indicates OVC Opponent

THE RACERS ARE....

5-8	...Overall	1-6	...Bench outscored by Opp. bench	3-2	...in November
1-1	...vs. OVC		...Tied, bench scoring	1-5	...in December
4-7	...vs. Non-Conference	5-3	...Outrebound Opponent	1-1	...in January
		0-5	...Outrebounded by Opponent		...in February
			...Tied, rebounds		...in March
		5-5	...More FTM than Opponent		
5-1	...Leading at Half	1-1	...Less FTM than Opponent		...on Mondays
0-7	...Trailing at Half	0-1	...Tied, FTM	1-4	...on Tuesdays
	...Tied at Half	4-1	...More 3FGM than Opponent	1-0	...on Wednesdays
	...In Overtime	1-7	...Less 3FGM than Opponent	1-1	...on Thursdays
5-0	...Outshoot Opponent (%)		...Tied, 3FGM	0-2	...on Fridays
0-8	...Outshot by Opponent (%)	1-6	...More turnovers than Opponent	2-1	...on Saturdays
	...Tied opponent, shooting (%)	4-2	...Less turnovers than Opponent		...on Sundays
5-3	...Shoot .400 or better		...Tied, turnovers		
0-5	...Shoot under .400	0-4	...Score ≤ 60	0-1	...in the Afternoon (Before 4 p.m.)
0-6	...Opponent shoot .400 or better	5-1	...Score 75+	5-7	...in the Evenings (4 p.m. or After)
6-1	...Opponent shoot under .400	3-1	...Opponents Score ≤ 60		
4-2	...Bench outscores Opp. bench	0-5	...Opponents Score 75+		

2018 SCORE BY QUARTERS

	1st Qtr.	2nd Qtr.	3rd Qtr.	4th Qtr.	OT	Total
Murray St.	212	215	255	254	0	937
Avg.	16.3	16.6	19.6	19.5	0.0	72.1
Opponents	182	251	272	214	0	919
Avg.	13.1	19.6	21.5	16.1	0.0	70.7

BENCH SCORING

RACERS	OPPONENTS
Season Avg.: 21.5	Season Avg.: 26.2
Team High: 60 (OCU, 11/10)	Team High: 41 (MOR, 1/3)
Team Low: 4 (UT, 1/28)	Team Low: 7 (BET, 12/13)
Individual High: 14 - Burpo (OCU, 11/10)	Individual High: 28 - Jeune (MOR, 1/3)

2018 WON-LOST MARGINS

Margin	1	2	3	4	5	6	7	8	9	10	11	12	13	14	15
Won By															
Lost By						2					1				
Margin	16	17	18	19	20	21	22	23	24	25	26	27	28	29	30+
Won By			1										1		4
Lost By						2	1								1

2018-19 TEAM HIGHS & LOWS - RACERS

CATEGORY	HIGH	LOW
Total Points	113 - OCU, 11/10	49 - UK, 12/21
Points In A Quarter	33 - [3rd, 4th] OCU, 11/10	6 - [2nd] AAMU, 12/1; [1st] ILL, 12/11
Overtime Points	---	---
FG Made	40 - OCU, 11/10	19 - 3 Times
FG Attempted	79 - OCU, 11/10	47 - SIU, 12/18
FG%	51.5 - BET, 12/13	27.1 - ILL, 12/11
3PT FG Made	14 - LIP, 11/20	0 - AAMU, 12/1
3PT FG Attempted	26 - LIP, 11/20; UT, 12/28	11 - ASU, 11/27; AAMU, 12/1
3PT FG%	58.3 - LIP, 11/20	0.0 - AAMU, 12/1
FT Made	28 - OCU, 11/10	7 - UE, 11/7; UK, 12/21
FT Attempted	34 - OCU, 11/10	10 - UE, 11/7; BUT, 11/13
FT%	90.0 - ASU, 11/27	50.0 - UK, 12/21
Rebounds	57 - OCU, 11/10	24 - UT, 12/28
Offensive Rebounds	20 - OCU, 11/10	6 - UT, 12/28
Defensive Rebounds	40 - BET, 12/13	18 - UT, 12/28
Assists	23 - OCU, 11/10	7 - SIU, 12/18
Steals	24 - OCU, 11/10	4 - UE, 11/7
Turnovers	27 - UK, 12/21	9 - LIP, 11/20
Blocked Shots	5 - LIP, 11/20	1 - 3 Times
Assist/Turnover Ratio	2.5 - LIP, 11/20	0.4 - ASU, 11/27; SIU, 12/18
Fouls	25 - ASU, 11/27	9 - ILL, 12/11

2018-19 TEAM HIGHS & LOWS - OPPONENTS

CATEGORY	HIGH	LOW
Total Points	97 - UT, 12/28	50 - BET, 12/13
Points In A Quarter	35 - [3rd] UT, 12/28	3 - [1st] BET, 12/13
Overtime Points	---	---
FG Made	41 - UT, 12/28	13 - BET, 12/13
FG Attempted	81 - UT, 12/28	55 - SIU, 12/18
FG%	56.5 - ILL, 12/11	22.4 - BET, 12/13
3PT FG Made	11 - MOR, 1/3	3 - 3 Times
3PT FG Attempted	25 - EJU, 1/5	10 - AAMU, 12/1
3PT FG%	47.6 - UK, 12/21	20.0 - 3 Times
FT Made	18 - BET, 12/13	6 - 3 Times
FT Attempted	30 - ASU, 11/27	8 - UE, 11/7
FT%	90.9 - SIU, 12/18	56.3 - UT, 12/28
Rebounds	56 - UT, 12/28	27 - OCU, 11/10; SIU, 12/18
Offensive Rebounds	25 - UT, 12/28	5 - SIU, 12/18
Defensive Rebounds	34 - AAMU, 12/1	20 - BUT, 11/13
Assists	23 - ILL, 12/11	6 - UE, 11/7; BET, 12/13
Steals	17 - BUT, 11/13	4 - LIP, 11/20; ILL, 12/11
Turnovers	32 - OCU, 11/10	7 - MOR, 1/3
Blocked Shots	8 - ILL, 12/11	0 - LIP, 11/20
Assist/Turnover Ratio	2.1 - ILL, 12/11; MOR, 1/3	0.3 - OCU, 11/10; LIP, 11/20
Fouls	21 - 4 Times	12 - BUT, 11/13; ILL, 12/11

2018-19 INDIVIDUAL GAME HIGHS

CATEGORY	MURRAY STATE	OPPONENT
Total Points	28 - Adebayo (UT, 12/28)	28 - Jeune (MOR, 1/3)
Points In A Quarter	12 [1st] - Adebayo (UK, 12/21)	17 [3rd] - Howard (UK, 12/21)
Overtime Points	---	---
FG Made	10 - Adebayo (UT, 12/28)	11 - Wittinger (ILL, 12/11); Jeune (MOR, 1/3)
FG Attempted	22 - Adebayo (ILL, 12/11)	23 - Jeune (MOR, 1/3)
3PT FG Made	5 - Mayes (BUT, 11/13)	5 - Howard (UK, 12/21)
3PT FG Attempted	9 - Griffith-Wallace (UT, 12/28); Mayes (MOR, 1.3)	9 - Jeune (MOR, 1/3)
FT Made	8 - Adebayo (EKU, 1/5)	7 - Bass (EKU, 1/5)
FT Attempted	9 - Adebayo (3 Times)	8 - Bass (EKU, 1/5)
Rebounds	13 - Adebayo (3 Times)	13 - Davis (UT, 12/28)
Offensive Rebounds	5 - Mack (ASU, 11/27); Adebayo (MOR, 1/3)	7 - Davis (UT, 12/28)
Defensive Rebounds	11 - Adebayo (BET, 12/13)	7 - 3 Times
Assists	9 - Turley (UE, 11/7)	9 - Dotson (AAMU, 12/1)
Steals	4 - Mack (OCU, 11/10)	5 - Weaver, Jennings (BUT, 11/13)
Turnovers	9 - Adebayo (UK, 12/21)	10 - Sanford (OCU, 11/10)
Blocks	3 - Mack (ASU, 11/27)	4 - Coffman (UE, 11/7); Elder (ASU, 11/27)
Minutes	39 - Turley (ASU, 11/27)	40 - Westbrook (ASU, 11/27)

2018-19 GAME-BY-GAME INDIVIDUAL HIGHS

Game	Points	Rebounds	Assists	Steals	Blocks
11/7 - Evansville	18 - Adebayo	10 - Adebayo	9 - Turley	3 - Turley	1 - 4 Players
11/10 - Oakland City	18 - Adebayo	13 - Adebayo	7 - Turley	4 - Mack	1 - 2 Players
11/13 - at Butler	15 - Adebayo, Mayes	9 - Adebayo	5 - Turley	3 - Outlaw, Turley	2 - Mack
11/20 - Lipscomb	21 - Turley	9 - Adebayo	6 - Turley	3 - Griffith-Wallace	2 - Burpo
11/27 - at Arkansas St.	18 - Adebayo	9 - Adebayo	5 - Turley	2 - Burpo, Crane	3 - Mack
12/1 - Alabama A&M	15 - Adebayo	10 - Adebayo	4 - Turley	3 - Mayes	1 - 3 Players
12/11 - at Illinois	23 - Adebayo	13 - Adebayo	4 - Turley	2 - Mayes, Adebayo	1 - Manley
12/13 - Bethel (TN)	21 - Adebayo	13 - Adebayo	6 - Turley	3 - Griffith-Wallace	2 - Mack
12//18 - Southern Ill.	17 - Adebayo	8 - Adebayo	5 - Turley	2 - Mayes	2 - Mack
12/21 - at Kentucky	20 - Adebayo	9 - Adebayo	5 - Turley	3 - Griffith-Wallace	1 - Burpo
12/28 - at Tennessee	28 - Adebayo	8 - Crane	4 - Turley	3 - Adebayo	1 - Hill
1/3 - Morehead St.	14 - Turley	10 - Adebayo	3 - Burpo	1 - 5 Players	1 - Adebayo, Mack
1/5 - Eastern Ky.	25 - Adebayo	11 - Adebayo	5 - Griffith-Wallace	3 - Burpo, Mayes	1 - 3 Players
1/10 - at UT Martin					
1/12 - at Southeast Mo.					
1/17 - at Eastern Ill.					
1/19 - at SIUE					
1/24 - Belmont					
1/26 - Tennessee St.					
1/31 - at Jacksonville State					
2/2 -at Tennessee Tech					
2/7 - Eastern Ill.					
2/9 - SIUE					
2/14 - at Eastern Ky.					
2/116 - at Austin Peay					
2/21 - UT Martin					
2/23 - Southeast Mo.					
2/28 - at Morehead St.					
3/2 - Austin Peay					

Bold Italics Indicates Team Season-High

2018-19 STARTERS BY GAME

Game	1 - G	2 - G	3 - G/F	4 - F	5 - C	Lineup # (Times Used)
11/7 - Evansville	Turley	Mayes	Outlaw	Crane	Adebayo	1 (1)
11/10 - Oakland City	Turley	Mayes	Griffith-Wallace	Crane	Adebayo	2 (1)
11/13 - at Butler	Turley	Mayes	Outlaw	Crane	Adebayo	1 (2)
11/20 - Lipscomb	Turley	Mayes	Outlaw	Burpo	Adebayo	3 (1)
11/27 - at Arkansas St.	Turley	Mayes	Outlaw	Burpo	Adebayo	3 (2)
12/1 - Alabama A&M	Turley	Mayes	Crane	Burpo	Adebayo	4 (1)
12/11 - at Illinois	Turley	Mayes	Griffith-Wallace	Burpo	Adebayo	5 (1)
12/13 - Bethel (TN)	Turley	Mayes	Griffith-Wallace	Mack	Adebayo	6 (1)
12/18 - Southern Ill.	Turley	Mayes	Griffith-Wallace	Mack	Adebayo	6 (2)
12/21 - at Kentucky	Turley	Mayes	Griffith-Wallace	Mack	Adebayo	6 (3)
12/28 - at Tennessee	Turley	Mayes	Griffith-Wallace	Crane	Adebayo	2 (2)
1/3 - Morehead St.	Turley	Mayes	Griffith-Wallace	Crane	Adebayo	2 (3)
1/5 - Eastern Ky.	Turley	Mayes	Griffith-Wallace	Crane	Adebayo	2 (4)
1/10 - at UT Martin						
1/12 - at Southeast Mo.						
1/17 - at Eastern Ill.						
1/19 - at SIUE						
1/24 - Belmont						
1/26 - Tennessee St.						
1/31 - at Jacksonville St.						
2/2 - at Tennessee Tech						
2/7 - Eastern Ill.						
2/9 - SIUE						
2/14 - at Eastern Ky.						
2/116 - at Austin Peay						
2/21 - UT Martin						
2/23 - Southeast Mo.						
2/28 - at Morehead St.						
3/2 - Austin Peay						

2018-19 DOUBLE-DOUBLES

Player	Game	Category 1	Category 2
Evelyn Adebayo	Evansville	18 Points	10 Rebounds
Evelyn Adebayo	Oakland City	18 Points	13 Rebounds
Evelyn Adebayo	Alabama A&M	15 Points	10 Rebounds
Evelyn Adebayo	Illinois	23 Points	13 Rebounds
Evelyn Adebayo	Bethel (TN)	21 Points	13 Rebounds
Evelyn Adebayo	Eastern Ky.	25 Points	11 Rebounds
Janika Griffith-Wallace	Bethel (TN)	10 Points	10 Rebounds

2018-19 HONORS

Evelyn Adebayo - F - Jr. OVC Newcomer of the Week - 11/20 OVC Newcomer of the Week - 12/18 OVC Player of the Week - 12/18 OVC Newcomer of the Week - 12/25 OVC Player of the Week - 12/31 OVC Newcomer of the Week - 12/31	Macey Turley - G - Fr. OVC Freshman of the Week - 11/13 OVC Freshman of the Week - 11/27 OVC Freshman of the Week - 12/18	

2018-19 STATISTICS

RECORD:	OVERALL	HOME	AWAY	NEUTRAL
ALL GAMES	5-8	5-3	0-5	0-0
CONFERENCE	1-1	1-1	0-0	0-0
NON-CONFERENCE	4-7	4-2	0-5	0-0

#	Player	gp-gs	min	avg	Total		3-Point		F-Throw		Rebounds											
					fg-fga	fg%	3fg-fga	3fg%	ft-fa	ft%	off	def	tot	avg	pf	dq	a	to	blk	stl	pts	avg
14	Adebayo, Evelyn	13-13	405	31.2	83-171	.485	11-28	.393	63-77	.818	27	102	129	9.9	23	1	16	49	3	15	240	18.5
05	Turley, Macey	13-13	413	31.8	54-139	.388	14-53	.264	23-27	.852	13	31	44	3.4	34	0	66	39	2	17	145	11.2
00	Griffith-Wallace, J.	12-8	317	26.4	44-136	.324	12-47	.255	10-14	.714	7	33	40	3.3	20	0	31	34	0	16	110	9.2
04	Mayes, Lex	13-13	390	30.0	31-99	.313	23-71	.324	23-29	.793	9	22	31	2.4	35	0	15	20	3	20	108	8.3
31	Crane, Brianna	13-7	291	22.4	37-71	.521	0-0	.000	24-32	.750	24	46	70	5.4	11	0	10	21	4	9	98	7.5
44	Gibson, Macie	2-0	25	12.5	5-6	.833	0-0	.000	3-4	.750	3	4	7	3.5	2	0	2	0	1	0	13	6.5
32	Burpo, Alexis	13-4	251	19.3	29-58	.500	7-17	.412	5-13	.385	21	31	52	4.0	18	0	22	18	5	9	70	5.4
20	Mack, Cekeya	13-3	182	14.0	28-50	.560	0-0	.000	14-23	.609	16	33	49	3.8	22	0	3	16	13	11	70	5.4
03	Outlaw, DeAsia	9-4	125	13.9	12-29	.414	1-3	.333	4-6	.667	4	6	10	1.1	13	0	5	12	1	6	29	3.2
33	Manley, Michaela	10-0	92	9.2	8-23	.348	5-15	.333	3-4	.750	1	7	8	0.8	3	0	8	3	1	5	24	2.4
11	Barrett, Paige	10-0	35	3.5	4-12	.333	0-1	.000	8-8	1.000	6	5	11	1.1	7	0	1	3	1	3	16	1.6
02	Hill, Sadie	11-0	44	4.0	3-7	.429	1-2	.500	2-2	1.000	0	6	6	0.5	8	0	4	1	4	2	9	0.8
01	Blackburn, Raegan	8-0	29	3.6	2-4	.500	1-1	1.000	0-0	.000	0	1	1	0.1	1	0	0	1	0	1	5	0.6
	Team										21	32	53					8				
	Total.....	13	2599		340-805	.422	75-238	.315	182-239	.762	152	359	511	39.3	197	1	183	225	38	114	937	72.1
	Opponents.....	13	2602		351-834	.421	82-247	.332	135-191	.707	153	334	487	37.5	216	-	177	212	41	115	919	70.7

TEAM STATISTICS	MUR	OPP	Date	Opponent	Score	Att.
SCORING	937	919	11/07/18	EVANSVILLE	w 81-53	585
Points per game	72.1	70.7	11/10/18	OAKLAND CITY	w 113-55	938
Scoring margin	+1.4	-	11/13/18	at Butler	L 65-86	484
FIELD GOALS-ATT	340-805	351-834	11/20/18	LIPSCOMB	w 97-61	448
Field goal pct	.422	.421	11/27/18	at Arkansas St.	L 63-74	719
3 POINT FG-ATT	75-238	82-247	12/01/18	ALABAMA A&M	L 53-59	762
3-point FG pct	.315	.332	12/11/18	at Illinois	L 52-84	986
3-pt FG made per game	5.8	6.3	12/13/18	BETHEL (TN)	w 86-50	432
FREE THROWS-ATT	182-239	135-191	12/18/18	SOUTHERN ILL.	L 59-65	0
Free throw pct	.762	.707	12/21/18	at Kentucky	L 49-88	4312
F-Throws made per game	14.0	10.4	12/28/18	at Tennessee	L 77-98	8518
REBOUNDS	511	487	* 01/03/19	MOREHEAD ST.	L 61-83	716
Rebounds per game	39.3	37.5	* 01/05/19	EASTERN KY.	w 81-63	2852
Rebounding margin	+1.8	-				
ASSISTS	183	177	* - OVC game			
Assists per game	14.1	13.6				
TURNOVERS	225	212				
Turnovers per game	17.3	16.3				
Turnover margin	-1.0	-				
Assist/turnover ratio	0.8	0.8				
STEALS	114	115				
Steals per game	8.8	8.8				
BLOCKS	38	41				
Blocks per game	2.9	3.2				
ATTENDANCE	6733	15019				
Home games-Avg/Game	8-842	5-3004				
Neutral site-Avg/Game	-	0-0				

Score by Periods	1st	2nd	3rd	4th	Totals
Murray St.	212	216	255	254	937
Opponents	182	251	272	214	919

2018-19 OVC STATISTICS

RECORD:	OVERALL	HOME	AWAY	NEUTRAL
ALL GAMES	1-1	1-1	0-0	0-0
CONFERENCE	1-1	1-1	0-0	0-0
NON-CONFERENCE	0-0	0-0	0-0	0-0

#	Player	gp-gs	min	avg	Total		3-Point		F-Throw		Rebounds											
					fg-fga	fg%	3fg-fga	3fg%	ft-fa	ft%	off	def	tot	avg	pf	dq	a	to	blk	stl	pts	avg
14	Adebayo, Evelyn	2-2	68	34.0	11-21	.524	2-2	1.000	10-11	.909	6	15	21	10.5	5	0	3	12	2	2	34	17.0
04	Mayes, Lex	2-2	61	30.5	4-16	.250	4-13	.308	7-8	.875	1	4	5	2.5	7	0	1	1	0	3	19	9.5
00	Griffith-Wallace, J.	2-2	51	25.5	7-26	.269	1-9	.111	2-3	.667	0	5	5	2.5	4	0	6	6	0	1	17	8.5
05	Turley, Macey	2-2	56	28.0	6-14	.429	2-5	.400	3-3	1.000	3	5	8	4.0	5	0	6	2	0	1	17	8.5
32	Burpo, Alexis	2-0	47	23.5	7-13	.538	1-4	.250	1-4	.250	6	7	13	6.5	4	0	5	2	1	4	16	8.0
31	Crane, Brianna	2-2	49	24.5	6-13	.462	0-0	.000	4-6	.667	5	8	13	6.5	4	0	2	3	1	1	16	8.0
20	Mack, Cekeya	2-0	22	11.0	4-8	.500	0-0	.000	2-6	.333	2	5	7	3.5	1	0	0	6	1	0	10	5.0
03	Outlaw, DeAsia	2-0	18	9.0	4-7	.571	0-1	.000	0-0	.000	0	2	2	1.0	2	0	1	4	0	0	8	4.0
33	Manley, Michaela	2-0	16	8.0	1-4	.250	1-3	.333	0-0	.000	1	0	1	0.5	0	0	2	0	0	1	3	1.5
02	Hill, Sadie	2-0	4	2.0	0-0	.000	0-0	.000	2-2	1.000	0	1	1	0.5	1	0	0	0	0	0	2	1.0
01	Blackburn, Raegan	2-0	6	3.0	0-0	.000	0-0	.000	0-0	.000	0	0	0	0.0	0	0	0	0	0	0	0	0.0
11	Barrett, Paige	2-0	2	1.0	0-0	.000	0-0	.000	0-0	.000	0	0	0	0.0	0	0	0	0	0	0	0	0.0
	Team										4	5	9				1					
	Total.....	2	400		50-122	.410	11-37	.297	31-43	.721	28	57	85	42.5	33	0	26	37	5	13	142	71.0
	Opponents.....	2	400		56-141	.397	16-49	.327	18-23	.783	29	51	80	40.0	34	-	26	24	9	15	146	73.0

TEAM STATISTICS	MUR	OPP	Date	Opponent	Score	Att.
SCORING	142	146	* 01/03/19	MOREHEAD ST.	L 61-83	716
Points per game	71.0	73.0	* 01/05/19	EASTERN KY.	w 81-63	2852
Scoring margin	-2.0	-	* - OVC game			
FIELD GOALS-ATT	50-122	56-141				
Field goal pct	.410	.397				
3 POINT FG-ATT	11-37	16-49				
3-point FG pct	.297	.327				
3-pt FG made per game	5.5	8.0				
FREE THROWS-ATT	31-43	18-23				
Free throw pct	.721	.783				
F-Throws made per game	15.5	9.0				
REBOUNDS	85	80				
Rebounds per game	42.5	40.0				
Rebounding margin	+2.5	-				
ASSISTS	26	26				
Assists per game	13.0	13.0				
TURNOVERS	37	24				
Turnovers per game	18.5	12.0				
Turnover margin	-6.5	-				
Assist/turnover ratio	0.7	1.1				
STEALS	13	15				
Steals per game	6.5	7.5				
BLOCKS	5	9				
Blocks per game	2.5	4.5				
ATTENDANCE	3568	0				
Home games-Avg/Game	2-1784	0-0				
Neutral site-Avg/Game	-	0-0				

Score by Periods	1st	2nd	3rd	4th	Totals
Murray St.	33	37	39	33	142
Opponents	38	35	36	37	146



**JANIKA
GRIFFITH-WALLACE**
G ■ 5-9 ■ So.
Brampton, Ontario



**REAGAN
BLACKBURN**
G ■ 5-8 ■ Fr.
Greenville, Ky.



**SADIE
HILL**
G/F ■ 6-0 ■ Fr.
Indianapolis, Ind



**DEASIA
OUTLAW**
G ■ 5-11 ■ Jr.
Henderson, Ky.



**LEX
MAYES**
G ■ 5-7 ■ Fr.
Murray, Ky.



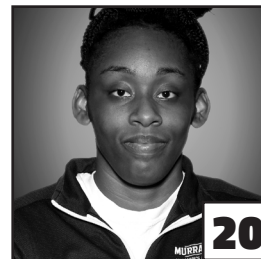
**MACEY
TURLEY**
G ■ 5-6 ■ Fr.
Murray, Ky.



**PAIGE
BARRETT**
G/F ■ 5-10 ■ So.
Scottsburg, Ind.



**EVELYN
ADEBAYO**
F ■ 6-0 ■ R-Jr.
London, England



**CEKEYA
MACK**
F ■ 6-1 ■ Jr.
Murray, Ky.



**BRIANNA
CRANE**
F ■ 6-0 ■ So.
Birmingham, Ala.



**ALEXIS
BURPO**
F/G ■ 5-10 ■ Fr.
Murray, Ky.



**MICHAELA
MANLEY**
G ■ 5-10 ■ Sr.
Benton, Ky.



**MACIE
GIBSON**
F ■ 6-1 ■ Fr.
Booneville, Ky.



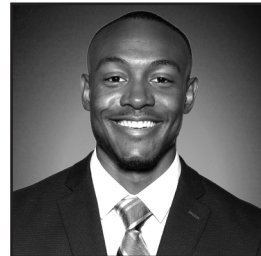
**RECHELLE
TURNER**
Head Coach
2nd Season



**MONICA
EVANS**
Assistant Coach
2nd Season



**AMBER
GUFFEY**
Assistant Coach
2nd Season



**JAUWAN
SCAIFE**
Assistant Coach
1st Season