



10-15 (6-8)

MURRAY ST. RACERS VS. UT MARTIN/SOUTHEAST MO.

Murray, Ky. (CFSB Center)

Thur., Feb. 21 (5 p.m.)/Sat., Feb. 23 (5 p.m.)

TV/Web: ESPN+

Live Audio: WFGS 103.5 FM (Thur.)/WNBS 1340 AM (Sat.)

(PxP - Jeremy Rose)



18-7 (10-4)



12-13 (7-7)

2018-19 SCHEDULE

Date	Opponent	Time /Result
11/1	#LINDSEY WILSON	W 72-51
11/7	EVANSVILLE	W 81-53
11/10	OAKLAND CITY	W 113-55
11/13	at Butler	L 65-86
11/20	LIPSCOMB	W 97-61
11/27	at Arkansas St.	L 63-74
12/1	ALABAMA A&M	L 53-59
12/11	at Illinois	L 52-84
12/13	BETHEL (TN)	W 86-50
12/18	SOUTHERN ILL.	L 59-65
12/21	at #18 Kentucky	L 49-88
12/28	at #10 Tennessee	L 77-98
1/3	*MOREHEAD ST.	L 61-83
1/5	*EASTERN KY.	W 81-63
1/10	*at UT Martin	L 67-75
1/12	*at Southeast Mo.	W 64-59
1/17	*at Eastern Ill.	L 67-75
1/19	*at SIUE	L 54-71
1/24	*BELMONT	L 58-65
1/26	*TENNESSEE ST.	L 61-65
1/31	*at Jacksonville St.	W 64-59
2/2	*at Tennessee Tech	L 65-74
2/7	*EASTERN ILLINOIS	W 60-51 ^{OT}
2/9	*SIUE	W 81-75
2/14	*at Eastern Ky.	W 76-63
2/16	*at Austin Peay	L 56-59
2/21	*UT MARTIN	5 p.m.
2/23	*SOUTHEAST MO.	5 p.m.
2/28	*at Morehead St.	4:05 p.m.
3/1	*AUSTIN PEAY	5 p.m.
3/6-9	OVC Tournament	TBD

* - OVC Contest

- Exhibition

2018-19 OVC STANDINGS

Team	OVC	Overall
Belmont	13-1	20-5
Tennessee Tech	10-4	18-7
UT Martin	10-4	18-7
Morehead State	10-4	19-8
Austin Peay	8-6	13-12
Southeast Missouri	7-7	12-13
Jacksonville State	6-8	12-13
SIUE	6-8	11-14
Murray State	6-8	10-15
Eastern Illinois	4-10	10-15
Tennessee State	4-10	4-22
Eastern Kentucky	0-14	2-23

As of Feb. 20, 2019

MURRAY STATE PROBABLE STARTERS

No.	Name	Pos.	GP/GS	FG%	3FG%	FT%	RPG	APG	PPG
0	Janika Griffith-Wallace	G	24/15	.353	.302	.750	3.3	2.3	10.2
5	Macey Turley	G	25/25	.366	.310	.882	3.05	4.3	13.2
14	Evelyn Adebayo	F	25/25	.473	.375	.776	11.7	1.4	18.4
31	Brianna Crane	F	25/19	.473	.000	.712	5.1	0.7	7.0
32	Alexis Burpo	F/G	25/12	.413	.229	.457	3.9	1.4	4.0

Key Reserves

4	Lex Mayes	G	25/22	.335	.361	.771	2.8	1.2	7.1
20	Cekeya Mack	F	25/3	.547	.00	.595	3.1	0.2	4.3
33	Michaela Manley	F	22/0	.310	.259	.833	0.5	0.5	1.7
Team			25	.408	.321	.743	40.0	12.4	68.4

UT MARTIN PROBABLE STARTERS

No.	Name	Pos.	GP/GS	FG%	3FG%	FT%	RPG	APG	PPG
4	Emanye Robertson	G	25/25	.467	.333	.794	3.8	4.6	11.0
14	Zaire Hicks	G	25/24	.345	.277	.714	2.1	2.4	8.2
20	Chelsey Perry	F	25/24	.492	.267	.729	3.6	0.6	9.0
21	Maddie Waldrop	F	25/24	.382	3.27	.728	69	1.6	8.5
22	Damiah Griffin	F	25/10	.492	.267	.729	3.6	0.6	9.0
Team			25	.426	.336	.733	38.0	16.2	80.3

SOUTHEAST MISSOURI PROBABLE STARTERS

No.	Name	Pos.	GP/GS	FG%	3FG%	FT%	RPG	APG	PPG
2	Carrie Shephard	G	25/23	.329	.326	.545	1.7	1.4	9.3
10	Taelour Pruitt	G	24/3	.368	.267	.714	1.7	1.7	5.1
23	Jocelyn Taylor	F	25/20	.500	.286	.617	3.9	0.7	8.0
24	Tesia Thompson	G	24/23	.409	.200	.723	7.4	2.0	16.8
32	Losmie Lutaya	F	25/7	.393	.000	.667	2.8	0.3	2.3
Team			25	.398	.269	.665	36.4	11.5	62.3

2018-19 RECORD BREAKDOWN

	Record	Home	Away	Neutral	OT
Overall	10-15	7-5	3-10	0-0	0-0
OVC	6-8	3-3	3-5	0-0	0-0

SEASON STREAKS

Overall: Lost 1 Home: Won 2 Away: Lost 1 Neutral: --- OT: Won 1

UPCOMING SCHEDULE

DATE	OPPONENT	SITE	TIME	WEB	RADIO
Feb. 28	Morehead State	Morehead, Ky. (Johnson Arena)	4:05 p.m.	ESPN+	1340 AM
Mar. 2	Austin Peay	Murray, Ky. (CFSB Center)	5 p.m.	ESPN+	1340 AM

LAST TIME OUT

at Eastern Ky. (W 81-63)/at Austin Peay (L 56-59)

Feb. 14 at McBrayer Arena/Feb. 16 at Dunn Center

RICHMOND, Ky./CLARKSVILLE, Tenn. - The Racers went 1-1 last week with a win over Eastern Kentucky, followed by a close loss to Austin Peay. The Racers were actually outshot in the game, 48.2 to 44.1, however it was their ability to shoot the three and score off the miss that helped seal the win. The Racers went 11-for-24 from beyond the arc in the game, while also scoring 18 second chance points, compared to just two by the Colonels. Evelyn Adebayo led MSU on the night with 23 points and 13 rebounds for her 16th double-double of the season. On Saturday, the Racers led for over the 30 minutes of the game, but a 7-0 run by the Govs to start the fourth quarter gave them the spark that they were looking for. With time waning, Brianah Ferby scored the last field goal by either team to bring Austin Peay within one, 56-55, with 2:45 to play. The Govs then hit two free throws at with 1:16 left to take the lead and two more with six seconds left to seal the 59-56 win. Janika Griffith-Wallace led the Racers with 22 points, while Evelyn Adebayo added 16 to go along with nine rebounds.

THURSDAY'S OPPONENT:

at UT Martin Skyhawks

Jan. 10, 2019

5:30 p.m.

Elam Center

SERIES HISTORY: Thursday will be the 81st meeting all-time between the Racers and the Skyhawks with UTM leading the series 46-34 overall and 19-18 in Murray. UT Martin has virtually owned the series as of late, winning each of the last five games, 12 of the last 13 and 18 of the last 20.

SCOUTING REPORT: With one of the most high-powered offenses in Division I, UT Martin enters the weekend averaging 80.3 points per game, the 14th most in the nation, while giving up 72.5. The Skyhawks are currently 18-7 on the year and 10-4 in league play with wins over SEMO and SIUE last week. Chelsey Perry leads a Skyhawk offense that sees 1 players average double-digit minutes by averaging 12.6 points per game, with Emanye Robertson close behind at 11.0. On the boards, Maddie Waldrop pulls down a team-high 6.9 rebounds per game, to go along with 8.5 points.

MURRAY STATE VS. UT MARTIN			SKYHAWKS - 46 WINS, RACERS - 34 WINS		
	<u>UT Martin Quick Facts</u>		Conference: Ohio Valley		Head Coach: Kevin McMillan
	Founded: 1900		Arena: Elam Center (4,300)		Alma Mater: Rhodes, 1989
	Location: Martin, Tenn.		2017-18 Rec.: 19-15 (13-5, 2nd OVC)		Overall Record (season): 191-124 (10th)
	Colors: Navy Blue & Orange		Postseason: L WNIT 1st Rd		UTM Record (season): Same
	Enrollment: 7,069				
<u>Last 3 vs. UTM:</u>		<u>Current Streaks vs. UTM:</u>		<u>MSU-UTM Series Misc.:</u>	
1/10/19 @UTM L 67-75		Overall: Lost 5		First Meeting: 12/6/72 @UTM L 41-63	
2/3/18 @UTM L 67-85		Home: Lost 8		Largest MSU Win: 3/3/08 @MSU W 83-48	
1/6/18 @MUR L 80-97		Away: Lost 5		Largest UTM Win: 2/7/98 @MSU L 49-82	
		Home: 18-19			
		Away: 14-26			
		Neutral: 2-1			

SATURDAY'S OPPONENT:

at Southeast Missouri Redhawks


Jan. 12, 2019

2 p.m.

Show-Me Center

SERIES HISTORY: The Racers put an end to a four-game win streak in the series by the Redhawks in January, with a 64-59 win in Cape Girardeau. The win now gives the Racers a total of 28 series, compared to 39 by Southeast Missouri. In Murray, the series has been kinder to Murray State, as it holds a 16-14 all-time advantage, despite a recent two-game win streak by the Redhawks.

SCOUTING REPORT: The Redhawks are 12-13 and 7-7 on the year after falling to UT Martin Thursday, but bouncing back Saturday with a win at Eastern Illinois. Tesia Thompson leads the team with 16.8 points and 7.4 rebounds, per game, while Carrie Shephard and Adrianna Murphy follow at 9.3 and 8.8, respectively. As a team, SEMO shoots 39.8-percent from the floor, 29.6-percent from 3-point range, 66.5-percent at the free-thrown line and averages 62.3 points per game, while allowing giving up 64.0.

MURRAY STATE VS. SOUTHEAST MISSOURI		REDHAWKS - 39 WINS, RACERS - 28 WINS	
	<u>Southeast Missouri Quick Facts</u>		
	Founded: 1873 Location: Cape Girardeau, Mo. Colors: Red & Black Enrollment: 11,502	Conference: Ohio Valley Arena: Show-Me Center (7,000) 2017-18 Rec.: 14-17 (9-9, T-6th OVC) Postseason: L OVC 1st Rd.	Head Coach: Rekha Patterson Alma Mater: N.C. A&T, 2001 Overall Record (season): 54-62 (4th) SEMO Record (season): Same
Last 3 vs. SEMO: 1/12/19 @SEMO W 64-59 2/1/18 @MSU L 70-80 1/4/18 @MSU L 74-85	<u>Current Streaks vs. SEMO:</u> Overall: Won 1 Home: Lost 2 Away: Won 1	<u>All-Time vs. SEMO:</u> Home: 16-14 Away: 11-24 Neutral: 1-1	<u>MSU-SEMO Series Misc.:</u> First Meeting: 2/16/74 @SEMO L 42-26 Largest MSU Win: 12/4/76 @MSU W 105-47 Largest SEMO Win: 2/3/16 @SEMO L 59-96

2018-19 MURRAY STATE ROSTER

No.	Player	Pos.	Ht.	Yr.	Hometown (Previous School)
0	Janika Griffith-Wallace	G	5-9	So.	Brampton, Ontario (Tech Academy at Sault Ste Marie)
1	Raegan Blackburn	G	5-8	Fr.	Greenville, Ky. (Muhlenberg County HS)
2	Sadie Hill^	F/G	6-0	Fr.	Indianapolis, Ind. (Perry Meridian HS)
4	Lex Mayes	G	5-7	Fr.	Murray, Ky. (Murray HS)
5	Macey Turley	G	5-6	Fr.	Murray, Ky. (Murray HS)
11	Paige Barrett	G/F	5-10	So.	Scottsburg, Ind. (Scottsburg HS)
14	Evelyn Adebayo	F	6-0	Jr.	London, England (Gardner-Webb)
20	Cekeya Mack	F	6-0	Jr.	Albany, Ga. (Albany Tech)
31	Brianna Crane	F	6-0	So.	Birmingham, Ala. (Ramsay HS)
32	Alexis Burpo	F/G	5-10	Fr.	Murray, Ky. (Murray HS)
33	Michaela Manley	G	5-10	Sr.	Benton, Ky. (Marshall County HS)
44	Macie Gibson^	F	6-1	Fr.	Booneville, Ky. (Owsley County HS)

^ Indicates player is out for the remainder of the season

Head Coach: Rechelle Turner (Murray St., 1996), 2nd Season

Assistant Coaches: Amber Guffey (Murray St., 2009), 2nd Season;
 Jauwan Scaife (Ball St., 2012), 1st Season; Monica Evans, 2nd Season

PRONUNCIATION GUIDE

JANIKA Griffith-Wallace.....Juh-nee-kuh
 Evelyn ADEBAYO.....Add-uh-buy-oh
 CEKEYA Mack.....Suh-key-uh
 DEASIA Outlaw.....Dee-Asia
 RECHELLE Turner.....Ruh-shell
 JAUWAN SCAIFE.....Juh-wahn Scayf

HOW THEY RANK - TEAM

Statistic	Team	Rank	Rank	Value	National Leader	Value
Assist Turnover Ratio (349 ranked)	UT Martin Murray St. Southeast Mo. St.	67 232 290	3 8 10	1.03 0.73 0.64	Oregon	1.98
Assists (349 ranked)	UT Martin Murray St. Southeast Mo. St.	40 197 266	2 7 10	404 311 288	Iowa	571
Assists Per Game (349 ranked)	UT Martin Murray St. Southeast Mo. St.	36 217 279	2 7 10	16.2 12.4 11.5	Baylor	23.5
Blocked Shots (349 ranked)	UT Martin Southeast Mo. St. Murray St.	44 53 245	3 5 7	110 107 64	Baylor	168
Blocked Shots Per Game (349 ranked)	UT Martin Southeast Mo. St. Murray St.	51 55 253	3 5 7	4.4 4.3 2.6	Baylor	7.0
Defensive Rebounds per Game (30 ranked)					Baylor	33
Fewest Fouls (345 ranked)	Murray St. Southeast Mo. St.	83 337	1 10	392 536	Penn	261
Fewest Turnovers (349 ranked)	UT Martin Murray St. Southeast Mo. St.	161 244 291	5 9 11	391 425 449	Wyoming	240
Field-Goal Percentage (349 ranked)	UT Martin Murray St. Southeast Mo. St.	75 142 182	4 5 7	42.6 40.8 39.8	Iowa	52.2
Field-Goal Percentage Defense (349 ranked)	Southeast Mo. St. Murray St. UT Martin	159 205 302	6 7 10	39.6 40.4 42.9	Baylor	31.4
Free Throw Attempts (349 ranked)	UT Martin Murray St. Southeast Mo. St.	7 63 110	1 6 7	569 490 457	Arkansas St.	633
Free Throws Made (349 ranked)	UT Martin Murray St. Southeast Mo. St.	3 27 138	1 5 7	417 364 304	Notre Dame	450
Free-Throw Percentage (349 ranked)	Murray St. UT Martin Southeast Mo. St.	45 60 253	3 4 10	74.3 73.3 66.5	Virginia Tech	79.9
Offensive Rebounds per Game (30 ranked)					Troy	22
Personal Fouls Per Game (349 ranked)	Murray St. Southeast Mo. St. UT Martin	69 334 344	1 11 12	15.7 21.4 22.4	UConn	11.7
Rebound Margin (349 ranked)	Murray St. Southeast Mo. St. UT Martin	97 196 227	3 8 9	3.2 -0.2 -1.4	Baylor	17.2
Rebounds (349 ranked)	Murray St. UT Martin Southeast Mo. St.	69 135 200	5 7 9	999 951 911	Troy	1,216
Rebounds Per Game (349 ranked)	Murray St. UT Martin Southeast Mo. St.	78 150 223	5 6 9	39.96 38.04 36.44	Troy	50.67
Scoring Defense (349 ranked)	Southeast Mo. St. Murray St. UT Martin	170 263 318	3 9 11	64.0 68.4 72.5	Drexel	47.6
Scoring Margin (349 ranked)	UT Martin Murray St. Southeast Mo. St.	77 193 212	3 8 9	7.8 0.0 -1.7	Mississippi St.	31.7
Scoring Offense (349 ranked)	UT Martin Murray St. Southeast Mo. St.	14 112 227	1 6 8	80.3 68.4 62.3	Oregon	88.6
Steals (349 ranked)	UT Martin Southeast Mo. St. Murray St.	8 57 228	2 4 8	299 240 174	Lamar University	368
Steals Per Game (349 ranked)	UT Martin Southeast Mo. St. Murray St.	8 60 238	1 4 8	12.0 9.6 7.0	Lamar University	15.3
Three Pt FG Defense (349 ranked)	Murray St. UT Martin Southeast Mo. St.	150 194 262	6 8 9	30.7 31.5 32.9	Drexel	23.0
Three-Point Field Goals Attempted (150 ranked)	UT Martin	99	6	533	FGCU	879
Three-Point Field Goals Made (349 ranked)	UT Martin Murray St. Southeast Mo. St.	71 156 289	4 8 10	179 150 112	DePaul	295
Three-Point Field Goals Per Game (349 ranked)	UT Martin Murray St. Southeast Mo. St.	84 163 294	4 8 10	7.2 6.0 4.5	Idaho	11.6
Three-Point Field-Goal Percentage (349 ranked)	UT Martin Murray St. Southeast Mo. St.	86 135 249	3 6 8	33.6 32.1 29.6	Oregon	43.3
Turnover Margin (349 ranked)	UT Martin Southeast Mo. St. Murray St.	15 158 302	2 8 11	5.56 0.68 -3.00	Lamar University	10.33

HOW THEY RANK - TEAM

Turnovers Forced (349 ranked)	UT Martin	16	1	21.20	Lamar University	25.13
	Southeast Mo. St.	59	4	18.64		
	Murray St.	290	10	14.00		
Turnovers Per Game (349 ranked)	UT Martin	151	5	15.6	Oregon	9.9
	Murray St.	228	9	17.0		
	Southeast Mo. St.	276	12	18.0		
Won-Lost Percentage (348 ranked)	UT Martin	64	2	72.0	Baylor	95.8
	Southeast Mo. St.	192	6	48.0		
	Murray St.	236	9	40.0		

HOW THEY RANK - INDIVIDUAL

Statistic	Player	National Rank	Conference Rank	Value	National Leader	Value
Assist Turnover Ratio (250 ranked)	Emanye Robertson, UT Martin Adrianna Murphy, Southeast Mo. St. Macey Turley, Murray St.	130 216 238	7 10 12	1.68 1.35 1.30	Jazzmun Holmes, Mississippi St.	4.40
Assists (150 ranked)	Emanye Robertson, UT Martin Macey Turley, Murray St.	67 98	2 5	114 108	Sabrina Ionescu, Oregon	209
Assists Per Game (250 ranked)	Emanye Robertson, UT Martin Macey Turley, Murray St. Adrianna Murphy, Southeast Mo. St.	86 113 195	3 5 9	4.6 4.3 3.7	Tiana Mangakahia, Syracuse	8.3
Blocked Shots (144 ranked)	Chelsey Perry, UT Martin	24	2	57	Channon Fluker, CSUN	94
Blocked Shots Per Game (247 ranked)	Chelsey Perry, UT Martin Kennedi Allen, Southeast Mo. St.	25 247	2 8	2.28 0.96	Channon Fluker, CSUN	3.76
Defensive Rebounds per Game (30 ranked)	Evelyn Adebayo, Murray St.	5	1	10	Kristine Anigwe, California	10
Double Doubles (37 ranked)	Evelyn Adebayo, Murray St.	11	1	16	Kristine Anigwe, California	25
Field Goal Attempts (150 ranked)	Evelyn Adebayo, Murray St. Tesia Thompson, Southeast Mo. St.	111 134	3 5	336 328	Kierra Anthony, Louisiana Tech	477
Field Goals Made (144 ranked)	Evelyn Adebayo, Murray St.	76	3	159	Megan Gustafson, Iowa	295
Field-Goal Percentage (250 ranked)	Evelyn Adebayo, Murray St. Tesia Thompson, Southeast Mo. St.	115 234	3 5	47.3 40.9	Megan Gustafson, Iowa	70.2
Final Points (198 ranked)	Evelyn Adebayo, Murray St. Tesia Thompson, Southeast Mo. St.	52 116	3 6	459 404	Megan Gustafson, Iowa	713
Free Throw Attempts (147 ranked)	Tesia Thompson, Southeast Mo. St. Evelyn Adebayo, Murray St.	10 32	1 2	177 147	Kristine Anigwe, California	214
Free Throws Made (141 ranked)	Tesia Thompson, Southeast Mo. St. Evelyn Adebayo, Murray St.	14 26	1 2	128 114	Cierra Dillard, Buffalo	162
Free-Throw Percentage (250 ranked)	Macey Turley, Murray St. Emanye Robertson, UT Martin Evelyn Adebayo, Murray St.	21 132 167	2 7 8	88.0 79.4 77.6	Rebekah Hand, Marist	93.9
Minutes Played (150 ranked)	Evelyn Adebayo, Murray St. Macey Turley, Murray St.	118 129	2 3	857:55 853:23	Karissa McLaughlin, Purdue	1047:33
Minutes Played Per Game (150 ranked)	Evelyn Adebayo, Murray St. Macey Turley, Murray St.	133 148	1 2	34.32 34.14	Lauren Holden, Fordham	38.72
Offensive Rebounds per Game (30 ranked)					Teaira McCowan, Mississippi St.	6
Points Per Game (250 ranked)	Evelyn Adebayo, Murray St. Tesia Thompson, Southeast Mo. St.	53 96	1 4	18.4 16.8	Megan Gustafson, Iowa	27.4
Rebounds (141 ranked)	Evelyn Adebayo, Murray St.	9	1	292	Kristine Anigwe, California	393
Rebounds Per Game (250 ranked)	Evelyn Adebayo, Murray St. Tesia Thompson, Southeast Mo. St.	10 202	1 8	11.7 7.4	Kristine Anigwe, California	15.7
Steals (144 ranked)	Emanye Robertson, UT Martin Adrianna Murphy, Southeast Mo. St. Tesia Thompson, Southeast Mo. St.	32 45 144	1 3 7	64 60 47	Chastadie Barrs, Lamar University	145
Steals Per Game (246 ranked)	Emanye Robertson, UT Martin Adrianna Murphy, Southeast Mo. St. Tesia Thompson, Southeast Mo. St.	41 54 148	1 3 5	2.56 2.40 1.96	Chastadie Barrs, Lamar University	6.04
Three-Point Field Goals Attempted (150 ranked)	Carrie Shephard, Southeast Mo. St.	35	3	190	Nicole Jimenez, Seton Hall	246
Three-Point Field Goals Made (144 ranked)	Carrie Shephard, Southeast Mo. St.	68	4	62	Taylor Pierce, Idaho	102
Three-Point Field Goals Per Game (246 ranked)	Carrie Shephard, Southeast Mo. St. Brittini Moore, UT Martin	70 177	4 6	2.48 2.00	Taylor Pierce, Idaho	4.43
Three-Point Field-Goal Percentage (196 ranked)	Brittini Moore, UT Martin Carrie Shephard, Southeast Mo. St.	1 166	1 6	50.0 32.6	Brittini Moore, UT Martin	50.0
Triple Doubles (7 ranked)					Sabrina Ionescu, Oregon	6

THE INSIDE TRACK

GAME 26-27 NOTES - UTM & SEMO

A WIN THURSDAY WOULD...

Give the Racers their first win over UT Martin at the CFSB Center since the 2009-2010 season and put an end to an eight-game skid against the Skyhawks at The Bank.

A WIN SATURDAY WOULD...

Give Murray State its first season-sweep of the Redhawks since the 2011-12 season.

JUST ONE MORE

With her next double-double, Evelyn Adebayo will become the MSU single-season double-doubles leader with 17. She notched her 16th last Thursday to tie her with Karen Hubert-Price, who was the first Racer to accomplish the feat, and Stephanie Minor, who notched 16 in each of her three seasons in blue and gold.

#	Player	Seas.	D-Ds
1.	Karen Hubert-Price	83-84	16
	Stephanie Minor	94-95	16
	Stephanie Minor	95-96	16
	Stephanie Minor	96-97	16
	Evelyn Adebayo	18-19	16
6.	Fondeolyn Garner	91-92	15
7.	Michelle Wenning	90-91	14
	Ashley N. Hayes	08-09	14
9.	Monika Gadson	99-00	13
10.	Geralyn Ferth	85-86	11
	Michelle Wenning	88-89	11
	Ke'Shunan James	17-18	11

MOVIN' ON UP

Macey Turley is currently on a consecutive free throw streak that is making its way up the all-time charts. She has currently made 28 straight free throws, the fourth longest in school history. With two more, she will move into third and with four more she will move into second, passing current Racer assistant Amber Guffey.

#	Player	Dates	FTs
1.	Paige Guffey	11/14/08-12/19/08	44
2.	Amber Guffey	12/18/05-1/130/06	31
3.	Melissa Huffman	1/28/89-1/14/90	29
4.	Macey Turley	1/31/19-Pr.	28
5.	Mariah Robinson	11/12/13-11/29/13	27
6.	Ke'Shunan James	11/15/17-11/18/17	26

A PERFECT 10

For the 10th time this season and the sixth time in as many weeks, Evelyn Adebayo was named as the OVC Newcomer of the Week. Adebayo averaged 19.5 points and 11.0 rebounds over a 1-1 week for the Racers

OK, WHAT'S NEXT?

The end is nigh for the Racers, as next week they will play their final two games of the 2018-19 season. MSU will begin the week on the road at Morehead on Thursday and then return home Saturday for senior night and a Heritage Bank Battle of the Border match up against Austin Peay.

GAME 24-25 NOTES - EKU & APSU

A WIN THURSDAY WOULD...

Give the Racers a three-game win streak for the first time since the 2016-17 season.

A WIN SATURDAY WOULD...

Potentially vault the Racers into fifth place in the OVC standings, depending on results of Thursday's games by the Racers and Gobs and Thursday and Saturday's games by SEMO.

BATTLE OF THE BORDER

Saturday is the Racers' first of two Heritage Bank Battle of the Border matchup. The Heritage Bank Battle of the Border is an all-sports competition between Murray State and Austin Peay. Through the fall, the Racers currently lead this year's standings, 12-6.

CHASING THE DUB

Evelyn Adebayo currently has 15 double-doubles this season, including one in each of her last three games. Her 15 this season currently places her fifth on the MSU single-season list with 6 regular-season games to play.

#	Player	Seas.	D-Ds
1.	Karen Hubert-Price	83-84	16
	Stephanie Minor	94-95	16
	Stephanie Minor	95-96	16
	Stephanie Minor	96-97	16
5.	Fondeolyn Garner	91-92	15
	Evelyn Adebayo	18-19	15
7.	Michelle Wenning	90-91	14
	Ashley N. Hayes	08-09	14
9.	Monika Gadson	99-00	13
10.	Geralyn Ferth	85-86	11
	Michelle Wenning	88-89	11
	Ke'Shunan James	17-18	11

MACEY ICE

Macey Turley went 10-for-10 from the free throw line in both games last week, giving her 25 consecutive made free throws. The streak is currently the fifth longest in program history.

#	Player	Dates	FTs
1.	Paige Guffey	11/14/08-12/19/08	44
2.	Amber Guffey	12/18/05-1/130/06	31
3.	Melissa Huffman	1/28/89-1/14/90	29
4.	Mariah Robinson	11/12/13-11/29/13	27
5	Macey Turley	1/31/19-Pr.	25

AWARD ROUNDUP

For the second time this season, Evelyn Adebayo and Macey Turley swept the weekly OVC awards. In addition, Adebayo also was named as the National Mid-Major Player of the Week by College Sports Madness. For Adebayo, it was her third Player of the Week honors and her ninth Newcomer nod. For Turley, it was the sixth time this season that she has been named as the Freshman of the Week.

GAME 22-23 NOTES - EIU & SIUE

A WIN THURSDAY WOULD...

Put Murray State ahead of EIU in the standings. Depending on results of other games, it could put them in the all-important 8th position.

A WIN SATURDAY WOULD...

Snap a five-game losing streak to SIUE at the CFSB Center. After winning the first four games of the series at home, the Racers have not won at home against the Panthers since 2013.

EIGHT IS GREAT

For the eighth time this season and fourth consecutive week, Evelyn Adebayo was named as the OVC Newcomer of the Week. The redshirt-junior averaged a double-double for the fifth straight week with her 13th double-double of the season at Tennessee Tech. She also grabbed a 15 rebounds in a win over Jacksonville State.

20-POINT CLUB

The Racers only had two players all season reach 20 points in a game, but they doubled that against Jacksonville State. Janika Griffith-Wallace had 25 and Brianna Crane had 20 points in the win, joining Evelyn Adebayo and Macey Turley, who have scored 20+ points on multiple occasions.

THE INSIDE TRACK

GAME 20-21 NOTES - JSU & TTU

A WIN THURSDAY WOULD...

Put an end to a four-game skid by the Racers, which is currently tied for the longest of the season.

A WIN SATURDAY WOULD...

Give the Racers three straight wins over Tennessee Tech, marking the first time MSU has won 3-plus games over the Golden Eagles since a six-game streak from 2007-2010.

LUCKY NUMBER SEVEN

For the seventh time this season, Evelyn Adebayo was named as the OVC Newcomer of the Week. The transfer had 20 points and 11 rebounds against Belmont Thursday and followed that with 16 points and a career-high 18 rebounds against TSU Saturday.

GAME 18-19 NOTES - BEL & TSU

A WIN THURSDAY WOULD...

Give the Racers their first win over Belmont in nine games and would be the first win over the Bruins with both schools being in the OVC.

HONORED AGAIN

For the second week in a row, Evelyn Adebayo and Macey Turley swept the OVC Newcomer and Freshman of the Week awards, respectively. Adebayo averaged a double-double for the second third straight week with her ninth and tenth double-doubles of the season. Turley led the team with 18.0 points per game, making seven threes in the two games. She also pulled down a career-high seven rebounds at SIUE.

ACROSS STATE LINES

Despite Kentucky and Tennessee bordering each other, Murray State has no players from Tennessee while Belmont has none from Kentucky. Tennessee State only has one player that calls Kentucky home, Asia Sims who hails from Paris, Kentucky.

GAME 16-17 NOTES - EIU & SIUE

A WIN THURSDAY WOULD...

Give the Racers their first back-to-back road wins since 2016-17. A weekend sweep would give MSU its first three-game road winning streak since 2012-13 season, when it won four in a row.

STOCKPILING

Evelyn Adebayo picked up her fifth Newcomer of the Week honor Tuesday, while Macey Turley received her fourth Freshman of the Week honor. Adebayo average a double-double over two games, while Turley averaged 21.5 including 32 at SEMO.

A NEW MEMBER

With 32 points at SEMO, Macey Turley became just the sixth Murray State freshman to score at least 30 points in a single game Saturday.

Name	Opp. (Date)	Pts.
Rona Poe	SIUE (12/16/85)	34
Sheila Smith	YSU (1/18/86)	34
Lori Trumblee	BUT (11/30/02)	32
Macey Turley	SEMO (1/12/19)	32
Sheila Smith	EKU (1/25/86)	31
Ke'Shunnan James	APSU (2/7/15)	31

BASKETBALL ON YOUR LUNCH BREAK

This week the Racers will play two afternoon games including a rare weekday OVC matinee. MSU has played two game this season that started before 4 p.m. and went 1-1. The Racers fell against Kentucky in December a Noon Eastern tip, but were victorious last Saturday at SEMO with a 2 p.m. start.

GAME 14-15 NOTES - UTM & SEMO

A WIN IN EITHER GAME WOULD...

Give the Racers their first win at UT Martin in six years and the first at SEMO in eight years.

REUNION

Thursday will be a reunion of sorts for head coach Rechele Turner and players Lex Mayes, Macey Turley and Alexis Burpo. It will mark the first time that they have been on the court with former player/teammate Maddie Waldrop since the latter graduated from Murray High two years ago.

ADDING UP

With 25 points and 11 rebounds Evelyn Adebayo tallied her sixth double-double of the season. She currently leads the Racers with 18.5 points and 9.9 rebounds per game.

WORKING THE LINE

Thursday will be a battle of the two best free-throw shooting teams in the OVC. UT Martin currently leads the league at 76.8 percent, while the Racers follow at 76.2.

GAME 12-13 NOTES - MOR & ECU

A WIN THURSDAY WOULD...

Put an end to a three-game skid by the Racers. Murray State has lost its last three game with its last win coming against bethel on Dec. 13.

THE SECOND SEASON

The Racers are 21-20 all-time in OVC openers and are 15-7 in those game when they are played in Murray. MSU has won its last three OVC openers and 5-4 all-time in conference lid lifters against Morehead State.

KEEP 'EM COMIN'

On Monday, Evelyn Adebayo won her second OVC Player of the Week award and fourth Newcomer of the Week honor. The junior had a career-high 28 at No. 10 Tennessee and went 7-for-7 at the free throw line.

IT'S A SMALL, SMALL WORLD

Both Murray State's Janika Griffith-Wallace and Morehead State's Georgia Campbell hail from the Toronto suburb of Brampton in Canada, while the Racers' DeAsia Outlaw and the Eagles' Ashley Moore played junior college ball together at Wabash Valley.

GAME 11 NOTES - UT

A WIN FRIDAY WOULD...

Give MSU its first win over an SEC team since 1980, when the Racers defeated Vanderbilt. Currently, MSU is 6-35 against the South-eastern Conference.

MORE HARDWARE

For the third time this season, Evelyn Adebayo was named as the OVC Newcomer of the Week. Over two games, she averaged 18.5 points and 8.5 rebounds.

ROLE REVERSAL

The Lady Vols are currently ranked 48th out of 349 teams in Division I when it comes to getting to the free throw line. However, when they get there they have trouble, shooting just 67.1 percent and ranking 209th. Conversely, MSU is the 28th best free throw shooting team in the country at 75.7 percent, but they have trouble getting to the line, ranking 231st in attempts at just 17.3 per game

THE INSIDE TRACK

GAME 10 NOTES - UK

GETTING IT DONE

Despite using just two bench players Tuesday against SIU, the Racer reserves still outscored their SIU counterparts 18-9, despite the Salukis using three more players. Brianna Crane dumped in 13 points, while Alexis Burpo added six.

THE KEY

One thing has separated the Racer wins from losses this season on the stat sheet and that is field-goal percentage. MSU is 4-0 when outshooting their opponents and 0-5 when being outshot.

GAME 9 NOTES - SIU

A WIN TUESDAY WOULD...

Give the Racers a much-needed boost of momentum as they head into arguably their two toughest games of the season; at No. 18 Kentucky On Dec. 22 and at No. 9 Tennessee on Dec. 28.

A CLEAN SWEEP

Evelyn Adebayo and Macey Turley swept the weekly OVC awards for the Racers Tuesday with Adebayo being named both Player and Newcomer and Turley earning the Freshman nod. Adebayo notched a double-double in both games last week to average 22.0 point and 13.0 rebounds, while Turley averaged 14.0 points and 5.0 assists.

LEADING THE WAY

Evelyn Adebayo has had the most points and rebounds, either by herself or shared, in every game for the Racers this season. Already with five double-doubles in eight games, the transfer is averaging 17.6 point and 10.8 rebounds per game.

WELCOME BACK

For the first time since her departure following the 2007-08 season, Jody Adams returns to the CFSB Center, this time as an assistant coach for SIU. Adams coached one season at the Bank, guiding the Racers to a 24-8 mark, an OVC tournament title and the program's first trip to the NCAA Tournament. Current Racer assistant Amber Guffey was a member Adams' championship squad.

GAME 8 NOTES - BET

A WIN THURSDAY WOULD...

Snap a three-game skid by the Racers which includes losses at Arkansas State and Illinois and at home against Alabama A&M.

FOUR & COUNTING

Evelyn Adebayo notched her fourth double-double of the season at Illinois with a career-high 23 points and 13 rebounds, which tied her previous career best.

BEST BEHAVIOR

The Racers continue to be one of the most disciplined teams in the nation as they have committed the sixth fewest fouls in the country. The Racers currently have 101 fouls on the season, while leader Montana has 94, at the CFSB Center in 2018.

GAME 7 NOTES - ILL

A WIN TUESDAY WOULD...

Give the Racers their first win over a Big Ten program. MSU is currently 0-4 against the power five league going with two losses against Indiana and one each against Purdue and Illinois.

DOIN' WORK

Through the first six games this season, Evelyn Adebayo has had three double-doubles. She is currently averaging 16.2 points and 10.0 rebounds per game placing her fourth and second in each category, respectively.

GAME 6 NOTES - AAMU

A WIN SATURDAY WOULD...

Give the Racers just their third 4-0 start at home since 2008-09. The only other previous time the Racer won their first four at The Bank was two seasons ago in 2016-17.

MOVIN' ON UP

With their 18-for-20 performance at the charity stripe Tuesday at Arkansas State, the Racers skyrocketed from 10th to 4th nationally in free throw percentage. MSU is currently shooting 82.2 percent from the free throw line, while DePaul leads the nation at 85.0.

DANGEROUS FROM DOWNTOWN

As a team, Murray State currently has the seventh best three-point shooting percentage in the nation at 41.8 and the nation's 12th-best three-point shooter in Lex Mayes, who is making 55.2-percent of her three-point attempts. St. Francis Brooklyn currently paces the nation in team percentage at 44.4, while Shalexxus Aaron leads individually at 72.7 percent.

BEASTS UNDERNEATH

The Racers currently lead the OVC in both rebounds per game and rebound margin. MSU currently averages 43.0 boards per game, while outrebounding their opponents by an average of 9.6 rebounds per game. Those numbers currently place the Racers 47th nationally in rebounds per game and 27th in rebound margin.

GAME 5 NOTES - ASU

A WIN TUESDAY WOULD...

Give the Racers their first win over a program that sponsors FBS football since 2012 when they defeated Ball State at home, 63-53.

RANK AND FILE

Murray State currently ranks in the top 10 nationally in three separate categories. They are 10th in free throw percentage at 80.0, eighth in scoring offense at 89.0 and fifth in fewest fouls at 54.

EIGHT IS GREAT

In three of their four games this season, the Racers have limited their opponents to just eight points in the opening stanza. They did so against Evansville, Oakland City and Lipscomb and went 3-0 in those contests.

THREE FOR ALL

Macey Turley kept Murray State's streak of winning a weekly award alive Tuesday when she was named as the OVC Freshman of the Week for the second time this season.

A FRIENDLY FACE

Arkansas State assistant Todd Buchanan is no stranger to the Racers, as he is a 1995 graduate of Murray State. In addition to his time as a student at Murray State, Buchanan served as an assistant for the Racer women from 1992-1995 and also coached at three local high schools; Lyon County, Calloway County and Murray.

GAME 4 NOTES - LIP

A WIN TUESDAY WOULD...

Give the Racers their first three-game win-streak at home since 2016-17 when they posted wins over MacMurray, Tennessee State and Eastern Illinois (Dec. 12 -Jan. 11).

THE INSIDE TRACK

BACK-TO-BACK

Although she did come up just short of her third straight double-double against Butler, Evelyn Adebayo was named as the OVC Newcomer of the Week, giving the Racers a weekly winner in each of the first two weeks of the season. Macey Turley was the first winner for Murray State, taking home freshman honors last week.

TURNOVER TROUBLE

The Racers committed a season-high 23 turnovers against Butler, leading directly to 27 points for the Bulldogs. The game also marked the first-time this year that MSU had finished a game with more turnovers than assists (11).

GAME 3 NOTES - BUT

DOUBLE YOUR FUN

For the second time in as many games, Evelyn Adebayo notched a double-double. Through two games this season she is averaging 18.0 points per game and 11.5 rebounds.

BIG NUMBERS

The Racers scored 113 points against Oakland City Saturday for the fourth most points in school single-game history. In addition, the Racers' 40-made field goals is the 11th most in program history.

SPREADING THE LOVE

All 12 eligible players played for the Racers with 11 of them tallying points. Of the 11 players that scored in the game, seven reached double digits.

GAME 2 NOTES - OAK

OPENING STATEMENT

MSU's win Wednesday was the first in a season opener against a Division I team since beating the Purple Aces to start the 2011-12 season, as well as the largest margin of victory against any Division I opponents since a 32 point win over Alabama A&M in 2016-17.

HISTORIC DEBUT

With game-highs of 18 points and 10 rebounds, Evelyn Adebayo became the first known Racer to debut with a double-double (single-game records dating back to 1997-98) Wednesday versus Evansville.

QUICK TURNAROUND

In Wednesday's opener, the Racers addressed two areas of concerns from the exhibition Thursday night, three-point and free throw shooting. The Racers were just 1-for-13 (7.7%) from three and 19-for-35 (54.3%) in their lone exhibition. However, on Wednesday, MSU was 7-for-10 (70.0%) from the stripe and 10-for-20 (50.0 %) from beyond the arc.

GAME 1 NOTES - UE

LIFTING THE LID

Murray State opens its 52nd season of women's basketball Wednesday and is 22-30 all-time in season openers and 26-23 in home openers. The Racers are 4-4 all-time against UE in season openers and 3-3 against the Purple Aces in home openers.

SHAKING THE DUST OFF

The Racers won their only exhibition of the year last Thursday, 72-51 over Lindsey Wilson. After sitting out last season due to NCAA transfer rules, Evelyn Adebayo easily got back in the groove and led MSU with 21 points, while Janika Griffith-Wallace posted a double-double with 13 points and 11 rebounds.

NEXT ONE UP

The Racers return just 20.4 percent of their scoring from last year with the most notable loss being the 2017-18 OVC Player of the Year, Ke'Shunna James. Brianna Crane will lead all returners this season after averaging 7.2 points and 5.7 rebounds per game last season.

HEAD COACH RECEHELLE TURNER

2ND SEASON AT MSU/2ND SEASON OVERALL

TURNER'S CAREER YEAR-BY-YEAR COACHING RECORD

Year	Team	OVERALL			OVC			POSTSEASON		
		W	L	Pct.	W	L	Pct.	W	L	Pct.
2017-18	Murray St.	11	19	.367	7	11	.389	0	1	.000
2018-19	Murray St.	10	15	.400	6	8	.429	-	-	.000
TOTAL		21	34	.381	13	19	.406	0	0	.000
OT		1	1	.500	1	1	.500	0	0	.000

TURNER VS. THE COMPETITION

OPPONENT	RECORD	OPPONENT	RECORD
Austin Peay*	1-2	Lipscomb	1-1
Alabama	1-0	Louisville	0-1
Alabama A&M	0-2	Mississippi Valley St.	1-0
Arkansas St.	0-1	Morehead St.*	0-2
Belmont*	0-3	UNC Greensboro	1-0
Bethel (TN)	2-0	Oakland City	1-0
Butler	0-2	Northern Kentucky	1-0
Evansville	1-1	Southern Illinois	0-1
ETSU	0-1	SIUE*	1-3
Eastern Illinois*	3-1	Southeast Missouri*	1-2
Eastern Kentucky*	3-0	Tennessee	0-1
Illinois	0-1	Tennessee State*	1-1
Jacksonville State*	0-3	Tennessee Tech*	2-1
Kentucky	0-1	UT Martin*	1-2

2018 Opponents Listed In BOLD

*Indicates OVC Opponent

THE RACERS ARE....

10-15	...Overall	5-11	...Bench outscored by Opp. bench	3-2	...in November
6-8	...vs. OVC		...Tied, bench scoring	1-5	...in December
4-7	...vs. Non-Conference	10-7	...Outrebounded Opponent	3-6	...in January
		0-8	...Outrebounded by Opponent	3-2	...in February
			...Tied, rebounds		...in March
		9-7	...More FTM than Opponent		
10-4	...Leading at Half	1-7	...Less FTM than Opponent		...on Mondays
0-11	...Trailing at Half	0-1	...Tied, FTM	1-4	...on Tuesdays
	...Tied at Half	8-2	...More 3FGM than Opponent	1-0	...on Wednesdays
	...In Overtime	2-12	...Less 3FGM than Opponent	4-4	...on Thursdays
8-4	...Outshoot Opponent (%)	0-1	...Tied, 3FGM	0-2	...on Fridays
2-11	...Outshot by Opponent (%)	5-12	...More turnovers than Opponent	4-5	...on Saturdays
	...Tied opponent, shooting (%)	5-3	...Less turnovers than Opponent		...on Sundays
8-6	...Shoot .400 or better		...Tied, turnovers		
2-9	...Shoot under .400	1-7	...Score ≤ 60	2-4	...in the Afternoon (Before 4 p.m.)
1-7	...Opponent shoot .400 or better	7-1	...Score 75+	8-11	...in the Evenings (4 p.m. or After)
9-8	...Opponent shoot under .400	6-2	...Opponents Score ≤ 60		
5-4	...Bench outscores Opp. bench	1-7	...Opponents Score 75+		

2018 SCORE BY QUARTERS

	1st Qtr.	2nd Qtr.	3rd Qtr.	4th Qtr.	OT	Total
Murray St.	421	385	451	442	0	1710
Avg.	16.8	15.4	18.0	17.7	0.0	68.4
Opponents	370	431	492	415	0	1710
Avg.	14.8	17.2	19.7	16.6	0.0	68.4

BENCH SCORING

RACERS	OPPONENTS
Season Avg.: 15.8	Season Avg.: 24.2
Team High: 60 (OCU, 11/10)	Team High: 45 (TTU, 2/2)
Team Low: 0 (JSU, 1/31)	Team Low: 5 (BEL, 1/24)
Individual High: 14 - Mayes (SIUE, 2/9)	Individual High: 31 - Outlow (TSU, 1/26)

2018 WON-LOST MARGINS

Margin	1	2	3	4	5	6	7	8	9	10	11	12	13	14	15
Won By					2	1			1				1		
Lost By			1	1		2	1	2	1		1				
Margin	16	17	18	19	20	21	22	23	24	25	26	27	28	29	30+
Won By			1										1		3
Lost By		1				2	1								2

2018-19 TEAM HIGHS & LOWS - RACERS

CATEGORY	HIGH	LOW
Total Points	113 - OCU, 11/10	49 - UK, 12/21
Points In A Quarter	33 - [3rd, 4th] OCU, 11/10	6 - [2nd] AAMU, 12/1; [1st] ILL, 12/11
Overtime Points	---	---
FG Made	40 - OCU, 11/10	17 - SIUE, 1/19
FG Attempted	79 - OCU, 11/10	46 - SEMO, 1/12
FG%	51.5 - BET, 12/13	27.1 - ILL, 12/11
3PT FG Made	14 - LIP, 11/20	0 - AAMU, 12/1
3PT FG Attempted	26 - 5 Times	8 - TTU, 2/2
3PT FG%	57.1 - SEMO, 1/12	0.0 - AAMU, 12/1
FT Made	28 - OCU, 11/10	7 - UE, 11/7; UK, 12/21
FT Attempted	34 - OCU, 11/10	10 - UE, 11/7; BUT, 11/13
FT%	90.0 - ASU, 11/27	50.0 - UK, 12/21
Rebounds	57 - OCU, 11/10	24 - UT, 12/28
Offensive Rebounds	21 - EIU, 2/7	5 - APSU, 2/16
Defensive Rebounds	40 - BET, 12/13	18 - UT, 12/28
Assists	23 - OCU, 11/10	7 - SIU, 12/18; JSU 1/31
Steals	24 - OCU, 11/10	2 - SIUE, 1/19
Turnovers	27 - UK, 12/21	8 - BEL, 1/24
Blocked Shots	5 - LIP, 11/20	1 - 7 Times
Assist/Turnover Ratio	2.5 - LIP, 11/20	0.4 - SIU, 12/18
Fouls	25 - ASU, 11/27	8 - EKU, 2/14

2018-19 TEAM HIGHS & LOWS - OPPONENTS

CATEGORY	HIGH	LOW
Total Points	98 - UT, 12/28	50 - BET, 12/13
Points In A Quarter	35 - [3rd] UT, 12/28	3 - [1st] BET, 12/13
Overtime Points	---	---
FG Made	41 - UT, 12/28	13 - BET, 12/13
FG Attempted	81 - UT, 12/28	55 - SIU, 12/18; EIU, 1/17
FG%	56.5 - ILL, 12/11	22.4 - BET, 12/13
3PT FG Made	11 - MOR, 1/3; APSU, 2/16	1 - TSU, 1/26
3PT FG Attempted	28 - BEL, 1/24; APSU, 2/16	10 - AAMU, 12/1
3PT FG%	47.6 - UK, 12/21	8.3 - TSU, 1/26
FT Made	22 - TSU, 1/26	2 - EKU, 2/14
FT Attempted	30 - ASU, 11/27	4 - EKU, 2/14
FT%	90.9 - SIU, 12/18	50.0 - EKU, 2/14
Rebounds	56 - UT, 12/28	27 - OCU, 11/10; SIU, 12/18
Offensive Rebounds	25 - UT, 12/28	5 - SIU, 12/18
Defensive Rebounds	34 - AAMU, 12/1; BEL, 1/24	17 - SEMO, 1/12
Assists	23 - ILL, 12/11	6 - UE, 11/7; BET, 12/13
Steals	17 - BUT, 11/13	1 - BEL, 1/24
Turnovers	32 - OCU, 11/10	7 - MOR, 1/3
Blocked Shots	8 - ILL, 12/11; SIUE, 2/9	0 - LIP, 11/20; APSU, 2/16
Assist/Turnover Ratio	2.1 - ILL, 12/11; MOR, 1/3	0.3 - OCU, 11/10; LIP, 11/20
Fouls	22 - SEMO, 1/12	12 - BUT, 11/13; ILL, 12/11

2018-19 INDIVIDUAL GAME HIGHS

CATEGORY	MURRAY STATE	OPPONENT
Total Points	32 - Turley (SEMO, 1/12)	31 - Outlow (TSU, 1/26)
Points In A Quarter	14 [3rd] - Adebayo (EKU, 2/14)	17 [3rd] - Howard (UK, 12/21)
Overtime Points	---	---
FG Made	10 - Adebayo (UT, 12/28)	11 - Wittinger (ILL, 12/11); Jeune (MOR, 1/3)
FG Attempted	22 - Adebayo (ILL, 12/11)	23 - Jeune (MOR, 1/3)
3PT FG Made	5 - Mayes (BUT, 11/13; SIUE, 2/9)	5 - Howard (UK, 12/21), Bell (SIUE, 1/19)
3PT FG Attempted	12 - Turley (EIU, 2/7)	10 - Bell (SIUE, 1/19); Maggard (BEL, 1/24)
FT Made	11 - Adebayo (UTM, 1/10); Turley (SEMO, 1/12)	12 - Outlow (TSU, 1/26)
FT Attempted	16 - Adebayo (UTM, 1/10)	16 - Robertson (UTM, 1/10)
Rebounds	20 - Adebayo (EIU, 2/7)	13 - Davis (UT, 12/28); Wooten (TSU, 1/26)
Offensive Rebounds	7 - Adebayo (EIU, 2/7)	7 - Davis (UT, 12/28), Bauman (SIUE, 1/19)
Defensive Rebounds	15 - Adebayo (TSU, 1/26)	10 - Wooten (TSU, 1/26)
Assists	9 - Turley (UE, 11/7)	9 - Ferby (APSU, 2/16)
Steals	4 - Mack (OCU, 11/10); Griffith-Wallace (JSU, 1/31)	5 - 4 Times
Turnovers	9 - Adebayo (UK, 12/21)	10 - Ubelhor (OCU, 11/10)
Blocks	3 - Mack (ASU, 11/27)	4 - 4 Times
Minutes	44 - Turley (EIU, 2/7)	45 - Lennox (EIU, 2/7)

2018-19 GAME-BY-GAME INDIVIDUAL HIGHS

Game	Points	Rebounds	Assists	Steals	Blocks
11/7 - Evansville	18 - Adebayo	10 - Adebayo	9 - Turley	3 - Turley	1 - 4 Players
11/10 - Oakland City	18 - Adebayo	13 - Adebayo	7 - Turley	4 - Mack	1 - 2 Players
11/13 - at Butler	15 - Adebayo, Mayes	9 - Adebayo	5 - Turley	3 - Outlaw, Turley	2 - Mack
11/20 - Lipscomb	21 - Turley	9 - Adebayo	6 - Turley	3 - Griffith-Wallace	2 - Burpo
11/27 - at Arkansas St.	18 - Adebayo	9 - Adebayo	5 - Turley	2 - Burpo, Crane	3 - Mack
12/1 - Alabama A&M	15 - Adebayo	10 - Adebayo	4 - Turley	3 - Mayes	1 - 3 Players
12/11 - at Illinois	23 - Adebayo	13 - Adebayo	4 - Turley	2 - Mayes, Adebayo	1 - Manley
12/13 - Bethel (TN)	21 - Adebayo	13 - Adebayo	6 - Turley	3 - Griffith-Wallace	2 - Mack
12//18 - Southern Ill.	17 - Adebayo	8 - Adebayo	5 - Turley	2 - Mayes	2 - Mack
12/21 - at Kentucky	20 - Adebayo	9 - Adebayo	5 - Turley	3 - Griffith-Wallace	1 - Burpo
12/28 - at Tennessee	28 - Adebayo	8 - Crane	4 - Turley	3 - Adebayo	1 - Hill
1/3 - Morehead St.	14 - Turley	10 - Adebayo	3 - Burpo	1 - 5 Players	1 - Adebayo, Mack
1/5 - Eastern Ky.	25 - Adebayo	11 - Adebayo	5 - Griffith-Wallace	3 - Burpo, Mayes	1 - 3 Players
1/10 - at UT Martin	25 - Adebayo	12 - Adebayo	6 - Turley	1 - 4 Players	1 - Mayes, Turley
1/12 - at Southeast Mo.	32 - Turley	10 - Adebayo	3 - Turley, Burpo	3 - Turley	2 - Adebayo
1/17 - at Eastern Ill.	20 - Turley	15 - Adebayo	2 - 4 Players	2 - Turley	1 - Crane
1/19 - at SIUE	20 - Adebayo	14 - Adebayo	4 - Turley	1 - Griffith-Wallace, Turley	1 - Crane, Manley
1/24 - Belmont	20 - Adebayo	11 - Adebayo	5 - Turley	2 - Turley	1 - 3 Players
1/26 - Tennessee St.	20 - Turley	18 - Adebayo	4 - Turley	3 - Turley	1 - 3 Players
1/31 - at Jacksonville State	25 - Griffith-Wallace	15 - Adebayo	3 - Griffith-Wallace, Turley	4 - Griffith-Wallace	1 - Adebayo, Mayes
2/2 -at Tennessee Tech	25 - Adebayo	10 - Adebayo	6 - Griffith-Wallace	1 - 4 Players	1 - Barrett
2/7 - Eastern Ill.	18 - Griffith-Wallace, Turley	20 - Adebayo	3 - Griffith-Wallace, Adebayo	3 - Griffith-Wallace, Crane	1 - Crane
2/9 - SIUE	27 - Adebayo	16 - Adebayo	7 - Turley	3 - Griffith-Wallace	2 - Mack
2/14 - at Eastern Ky.	23 - Adebayo	13 - Adebayo	6 - Turley	2 - Adebayo, Crane	1 - Mack
2/16 - at Austin Peay	22 - Griffith-Wallace	9 - Adebayo	3 - Burpo	2 - Griffith-Wallace, Mayes	2 - Burpo
2/21 - UT Martin					
2/23 - Southeast Mo.					
2/28 - at Morehead St.					
3/2 - Austin Peay					

Bold Italics Indicates Team Season-High

2018-19 STARTERS BY GAME

Game						Lineup # (Times Used)
11/7 - Evansville	Turley	Mayes	Outlaw	Crane	Adebayo	1 (1)
11/10 - Oakland City	Turley	Mayes	Griffith-Wallace	Crane	Adebayo	2 (1)
11/13 - at Butler	Turley	Mayes	Outlaw	Crane	Adebayo	1 (2)
11/20 - Lipscomb	Turley	Mayes	Outlaw	Burpo	Adebayo	3 (1)
11/27 - at Arkansas St.	Turley	Mayes	Outlaw	Burpo	Adebayo	3 (2)
12/1 - Alabama A&M	Turley	Mayes	Crane	Burpo	Adebayo	4 (1)
12/11 - at Illinois	Turley	Mayes	Griffith-Wallace	Burpo	Adebayo	5 (1)
12/13 - Bethel (TN)	Turley	Mayes	Griffith-Wallace	Mack	Adebayo	6 (1)
12/18 - Southern Ill.	Turley	Mayes	Griffith-Wallace	Mack	Adebayo	6 (2)
12/21 - at Kentucky	Turley	Mayes	Griffith-Wallace	Mack	Adebayo	6 (3)
12/28 - at Tennessee	Turley	Mayes	Griffith-Wallace	Crane	Adebayo	2 (2)
1/3 - Morehead St.	Turley	Mayes	Griffith-Wallace	Crane	Adebayo	2 (3)
1/5 - Eastern Ky.	Turley	Mayes	Griffith-Wallace	Crane	Adebayo	2 (4)
1/10 - at UT Martin	Turley	Mayes	Griffith-Wallace	Crane	Adebayo	2 (5)
1/12 - at Southeast Mo.	Turley	Mayes	Burpo	Crane	Adebayo	4 (2)
1/17 - at Eastern Ill.	Turley	Mayes	Burpo	Crane	Adebayo	4 (3)
1/19 - at SIUE	Turley	Mayes	Burpo	Crane	Adebayo	4 (4)
1/24 - Belmont	Turley	Mayes	Burpo	Crane	Adebayo	4 (5)
1/26 - Tennessee St.	Turley	Mayes	Burpo	Crane	Adebayo	4 (6)
1/31 - at Jacksonville St.	Turley	Mayes	Griffith-Wallace	Crane	Adebayo	2 (6)
2/2 - at Tennessee Tech	Turley	Mayes	Griffith-Wallace	Crane	Adebayo	2 (7)
2/7 - Eastern Ill.	Turley	Mayes	Griffith-Wallace	Crane	Adebayo	2 (8)
2/9 - SIUE	Turley	Burpo	Griffith-Wallace	Crane	Adebayo	7 (1)
2/14 - at Eastern Ky.	Turley	Burpo	Griffith-Wallace	Crane	Adebayo	7 (2)
2/16 - at Austin Peay	Turley	Burpo	Griffith-Wallace	Crane	Adebayo	7 (3)
2/21 - UT Martin						
2/23 - Southeast Mo.						
2/28 - at Morehead St.						
3/2 - Austin Peay						

2018-19 DOUBLE-DOUBLES

Player (DD#)	Game	Category 1	Category 2
Evelyn Adebayo (1)	Evansville	18 Points	10 Rebounds
Evelyn Adebayo (2)	Oakland City	18 Points	13 Rebounds
Evelyn Adebayo (3)	Alabama A&M	15 Points	10 Rebounds
Evelyn Adebayo (4)	Illinois	23 Points	13 Rebounds
Evelyn Adebayo (5)	Bethel (TN)	21 Points	13 Rebounds
Evelyn Adebayo (6)	Eastern Ky.	25 Points	11 Rebounds
Evelyn Adebayo (7)	UT Martin	25 Points	12 Rebounds
Evelyn Adebayo (8)	Southeast Mo.	15 Points	10 rebounds
Evelyn Adebayo (9)	Eastern Ill.	12 Points	15 Rebounds
Evelyn Adebayo (10)	SIUE	20 Points	14 Rebounds
Evelyn Adebayo (11)	Belmont	20 Points	11 Rebounds
Evelyn Adebayo (12)	Tennessee St.	16 Points	18 Rebounds
Evelyn Adebayo (13)	Tennessee Tech	25 Points	10 Rebounds
Evelyn Adebayo (14)	Eastern Ill.	12 Points	20 Rebounds
Evelyn Adebayo (15)	SIUE	27 Points	16 Rebounds
Evelyn Adebayo (16)	Eastern Ky.	23 Points	13 Rebounds
Janika Griffith-Wallace (1)	Bethel (TN)	10 Points	10 Rebounds

2018-19 HONORS

Evelyn Adebayo - F - Jr. OVC Player of the Week - 12/18 OVC Player of the Week - 12/31 OVC Player of the Week - 2/12 College Sports Madness Mid-Major Player of the Week - 2/11 OVC Newcomer of the Week - 11/20 OVC Newcomer of the Week - 12/18 OVC Newcomer of the Week - 12/25 OVC Newcomer of the Week - 12/31 OVC Newcomer of the Week - 1/15 OVC Newcomer of the Week - 1/22 OVC Newcomer of the Week - 1/29 OVC Newcomer of the Week - 2/5 OVC Newcomer of the Week - 2/12 OVC Newcomer of the Week - 2/19	Macey Turley - G - Fr. OVC Freshman of the Week - 11/13 OVC Freshman of the Week - 11/27 OVC Freshman of the Week - 12/18 OVC Freshman of the Week - 1/15 OVC Freshman of the Week - 1/22 OVC Freshman of the Week - 2/12	

2018-19 STATISTICS

RECORD:	OVERALL	HOME	AWAY	NEUTRAL
ALL GAMES	10-15	7-5	3-10	0-0
CONFERENCE	6-8	3-3	3-5	0-0
NON-CONFERENCE	4-7	4-2	0-5	0-0

#	Player	gp-gs	min	avg	Total	fg%	3-Point	3fg%	F-Throw	ft%	Rebounds				pf	dq	a	to	blk	stl	pts	avg
					fg-fga		3fg-fga		ft-fa		off	def	tot	avg								
14	Adebayo, Evelyn	25-25	856	34.2	159-336	.473	27-72	.375	114-147	.776	54	238	292	11.7	53	1	34	94	7	23	459	18.4
05	Turley, Macey	25-25	855	34.2	106-290	.366	36-116	.310	81-92	.880	31	56	87	3.5	73	1	108	83	3	31	329	13.2
00	Griffith-Wallace, J.	24-15	650	27.1	90-255	.353	26-86	.302	39-52	.750	15	65	80	3.3	40	1	56	65	2	31	245	10.2
04	Mayes, Lex	25-22	768	30.7	54-161	.335	43-119	.361	27-35	.771	23	46	69	2.8	65	1	29	37	7	28	178	7.1
31	Crane, Brianna	25-19	574	23.0	69-146	.473	0-1	.000	37-52	.712	51	76	127	5.1	33	0	18	36	7	18	175	7.0
44	x-Gibson, Macie	2-0	25	12.5	5-6	.833	0-0	.000	3-4	.750	3	4	7	3.5	2	0	2	0	1	0	13	6.5
20	Mack, Cekeya	25-3	298	11.9	41-75	.547	0-0	.000	25-42	.595	29	49	78	3.1	38	0	6	31	17	12	107	4.3
32	Burpo, Alexis	25-12	519	20.8	38-92	.413	8-35	.229	16-35	.457	36	62	98	3.9	40	0	34	33	10	10	100	4.0
03	x-Outlaw, DeAsia	13-4	143	11.0	14-34	.412	1-4	.250	4-8	.500	4	10	14	1.1	17	0	6	12	1	6	33	2.5
33	Manley, Michaela	22-0	174	7.9	13-42	.310	7-27	.259	5-6	.833	2	10	12	0.5	7	0	10	9	3	6	38	1.7
11	Barrett, Paige	15-0	59	3.9	4-14	.286	0-1	.000	10-10	1.000	9	7	16	1.1	10	0	2	4	2	6	18	1.2
02	x-Hill, Sadie	13-0	47	3.6	3-7	.429	1-2	.500	3-5	.600	0	6	6	0.5	10	0	5	2	4	2	10	0.8
01	Blackburn, Raegan	15-0	56	3.7	2-7	.286	1-4	.250	0-2	.000	0	2	2	0.1	4	0	1	3	0	1	5	0.3
Team											52	59	111					15				
Total.....		25	5024		598-1465	.408	150-467	.321	364-490	.743	309	690	999	40.0	392	4	311	424	64	174	1710	68.4
Opponents.....		25	5027		636-1575	.404	155-505	.307	283-394	.718	308	610	918	36.7	436	-	341	348	91	217	1710	68.4

x-Inactive player

TEAM STATISTICS	MUR	OPP	Date	Opponent	Score	Att.
SCORING	1710	1710	11/07/18	EVANSVILLE	w 81-53	585
Points per game	68.4	68.4	11/10/18	OAKLAND CITY	w 113-55	938
Scoring margin	+0.0	-	11/13/18	at Butler	L 65-86	484
FIELD GOALS-ATT	598-1465	636-1575	11/20/18	LIPSCOMB	w 97-61	448
Field goal pct	.408	.404	11/27/18	at Arkansas St.	L 63-74	719
3 POINT FG-ATT	150-467	155-505	12/01/18	ALABAMA A&M	L 53-59	762
3-point FG pct	.321	.307	12/11/18	at Illinois	L 52-84	986
3-pt FG made per game	6.0	6.2	12/13/18	BETHEL (TN)	w 86-50	432
FREE THROWS-ATT	364-490	283-394	12/18/18	SOUTHERN ILL.	L 59-65	0
Free throw pct	.743	.718	12/21/18	at Kentucky	L 49-88	4312
F-Throws made per game	14.6	11.3	12/28/18	at Tennessee	L 77-98	8518
REBOUNDS	999	918	* 01/03/19	MOREHEAD ST.	L 61-83	716
Rebounds per game	40.0	36.7	* 01/05/19	EASTERN KY.	w 81-63	2852
Rebounding margin	+3.2	-	* 01/10/19	at UT Martin	L 67-75	2921
ASSISTS	311	341	* 01/12/19	at Southeast Mo. St.	w 64-59	603
Assists per game	12.4	13.6	* 1/17/19	at Eastern Ill.	L 67-75	150
TURNOVERS	424	348	* 01/19/19	at SIUE	L 54-71	497
Turnovers per game	17.0	13.9	* 01/24/19	BELMONT	L 58-65	3071
Turnover margin	-3.0	-	* 01/26/19	TENNESSEE ST.	L 61-65	3614
Assist/turnover ratio	0.7	1.0	* 01/31/19	at Jacksonville St.	w 64-59	888
STEALS	174	217	* 02/02/19	at Tennessee Tech	L 65-74	4087
Steals per game	7.0	8.7	* 02/07/19	EASTERN ILL.	Wot 60-51	1804
BLOCKS	64	91	* 02/09/19	SIUE	w 81-75	1651
Blocks per game	2.6	3.6	* 02/14/19	at Eastern Ky.	w 76-63	220
ATTENDANCE	16873	24808	* 02/16/19	at Austin Peay	L 56-59	423
Home games-Avg/Game	12-1406	13-1908				
Neutral site-Avg/Game	-	0-0				

* - OVC game

Score by Periods	1st	2nd	3rd	4th	OT	Totals
Murray St.	421	385	451	442	11	1710
Opponents	370	431	492	415	2	1710

2018-19 OVC STATISTICS

RECORD:	OVERALL	HOME	AWAY	NEUTRAL
ALL GAMES	6-8	3-3	3-5	0-0
CONFERENCE	6-8	3-3	3-5	0-0
NON-CONFERENCE	0-0	0-0	0-0	0-0

#	Player	gp-gs	min	avg	Total		3-Point		F-Throw		Rebounds				pf	dq	a	to	blk	stl	pts	avg
					fg-fga	fg%	3fg-fga	3fg%	ft-fta	ft%	off	def	tot	avg								
14	Adebayo, Evelyn	14-14	519	37.1	87-186	.468	18-46	.391	61-81	.753	33	151	184	13.1	35	0	21	57	6	10	253	18.1
05	Turley, Macey	14-14	498	35.6	58-165	.352	24-68	.353	61-68	.897	21	30	51	3.6	44	1	48	46	1	15	201	14.4
00	Griffith-Wallace, J.	14-9	384	27.4	53-145	.366	15-48	.313	31-41	.756	8	37	45	3.2	24	1	31	37	2	16	152	10.9
31	Crane, Brianna	14-14	332	23.7	38-88	.432	0-1	.000	17-26	.654	32	38	70	5.0	26	0	10	18	4	10	93	6.6
04	Mayes, Lex	14-11	439	31.4	27-78	.346	24-61	.393	11-14	.786	15	28	43	3.1	37	1	15	18	4	11	89	6.4
20	Mack, Cekeya	14-0	138	9.9	17-33	.515	0-0	.000	13-25	.520	15	21	36	2.6	17	0	3	21	5	1	47	3.4
32	Burpo, Alexis	14-8	315	22.5	16-47	.340	2-22	.091	12-26	.462	21	38	59	4.2	26	0	17	17	6	5	46	3.3
03	x-Outlaw, DeAsia	6-0	36	6.0	6-12	.500	0-2	.000	0-2	.000	0	6	6	1.0	6	0	2	4	0	0	12	2.0
33	Manley, Michaela	14-0	98	7.0	6-23	.261	3-15	.200	2-2	1.000	2	3	5	0.4	4	0	4	6	2	2	17	1.2
02	x-Hill, Sadie	4-0	7	1.8	0-0	.000	0-0	.000	3-5	.600	0	1	1	0.3	3	0	1	1	0	0	3	0.8
11	Barrett, Paige	7-0	26	3.7	0-2	.000	0-0	.000	2-2	1.000	3	2	5	0.7	3	0	1	1	1	3	2	0.3
01	Blackburn, Raegan	9-0	33	3.7	0-3	.000	0-3	.000	0-2	.000	0	1	1	0.1	3	0	1	2	0	0	0	0.0
Team											35	32	67					8				
Total.....		14	2825		308-782	.394	86-266	.323	213-294	.724	185	388	573	40.9	228	3	154	236	31	73	915	65.4
Opponents.....		14	2825		341-882	.387	89-307	.290	166-226	.735	184	327	511	36.5	254	-	190	160	59	117	937	66.9

x-Inactive player

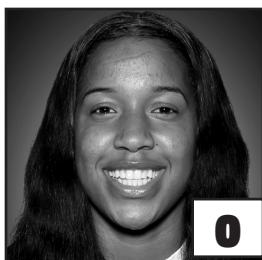
TEAM STATISTICS	MUR	OPP	Date	Opponent	Score	Att.
SCORING	915	937	* 01/03/19	MOREHEAD ST.	L 61-83	716
Points per game	65.4	66.9	* 01/05/19	EASTERN KY.	w 81-63	2852
Scoring margin	-1.6	-	* 01/10/19	at UT Martin	L 67-75	2921
FIELD GOALS-ATT	308-782	341-882	* 01/12/19	at Southeast Mo. St.	w 64-59	603
Field goal pct	.394	.387	* 1/17/19	at Eastern Ill.	L 67-75	150
3 POINT FG-ATT	86-266	89-307	* 01/19/19	at SIUE	L 54-71	497
3-point FG pct	.323	.290	* 01/24/19	BELMONT	L 58-65	3071
3-pt FG made per game	6.1	6.4	* 01/26/19	TENNESSEE ST.	L 61-65	3614
FREE THROWS-ATT	213-294	166-226	* 01/31/19	at Jacksonville St.	w 64-59	888
Free throw pct	.724	.735	* 02/02/19	at Tennessee Tech	L 65-74	4087
F-Throws made per game	15.2	11.9	* 02/07/19	EASTERN ILL.	Wot 60-51	1804
REBOUNDS	573	511	* 02/09/19	SIUE	w 81-75	1651
Rebounds per game	40.9	36.5	* 02/14/19	at Eastern Ky.	w 76-63	220
Rebounding margin	+4.4	-	* 02/16/19	at Austin Peay	L 56-59	423
ASSISTS	154	190	* - OVC game			
Assists per game	11.0	13.6				
TURNOVERS	236	160				
Turnovers per game	16.9	11.4				
Turnover margin	-5.4	-				
Assist/turnover ratio	0.7	1.2				
STEALS	73	117				
Steals per game	5.2	8.4				
BLOCKS	31	59				
Blocks per game	2.2	4.2				
ATTENDANCE	13708	9789				
Home games-Avg/Game	6-2285	8-1224				
Neutral site-Avg/Game	-	0-0				

Score by Periods	1st	2nd	3rd	4th	OT	Totals
Murray St.	242	206	235	221	11	915
Opponents	226	215	256	238	2	937

IF THE SEASON ENDED TODAY...

...Here is what the 2019 OVC Championship field would look like:





**JANIKA
GRIFFITH-WALLACE**
G ■ 5-9 ■ So.
Brampton, Ontario



**REAGAN
BLACKBURN**
G ■ 5-8 ■ Fr.
Greenville, Ky.



**SADIE
HILL**
G/F ■ 6-0 ■ Fr.
Indianapolis, Ind



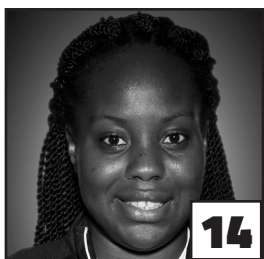
**LEX
MAYES**
G ■ 5-7 ■ Fr.
Murray, Ky.



**MACEY
TURLEY**
G ■ 5-6 ■ Fr.
Murray, Ky.



**PAIGE
BARRETT**
G/F ■ 5-10 ■ So.
Scottsburg, Ind.



**EVELYN
ADEBAYO**
F ■ 6-0 ■ R-Jr.
London, England



**CEKEYA
MACK**
F ■ 6-1 ■ Jr.
Murray, Ky.



**BRIANNA
CRANE**
F ■ 6-0 ■ So.
Birmingham, Ala.



**ALEXIS
BURPO**
F/G ■ 5-10 ■ Fr.
Murray, Ky.



**MICHAELA
MANLEY**
G ■ 5-10 ■ Sr.
Benton, Ky.



**MACIE
GIBSON**
F ■ 6-1 ■ Fr.
Booneville, Ky.



**RECHELLE
TURNER**
Head Coach
2nd Season



**MONICA
EVANS**
Assistant Coach
2nd Season



**AMBER
GUFFEY**
Assistant Coach
2nd Season



**JAUWAN
SCAIFE**
Assistant Coach
1st Season